



**DUAL CREDIT
IN THE
ILLINOIS COMMUNITY COLLEGE SYSTEM**

FISCAL YEAR 2024

March 2025

Compiled by ICCB

Nathan R. Wilson, Deputy Director for Research and Information Technology

Jay Brooks, Associate Deputy Director for Research and Analytics

Michelle Dufour, Director for Research and Analytics

Cecilia Elhaddad, Data Analyst

Mitchell Gaffney, Data Analyst

Jana Ferguson, Consultant, Data and Research Services

Printed by Authority of the State of Illinois 03/25

TABLE OF CONTENTS

Introduction	4
Dual Credit Definition and Legislative Background	5
Characteristics of Dual Credit Students (unduplicated)	7
<i>OVERALL HEADCOUNT</i>	7
<i>CHARACTERISTICS OF GENDER AND RACE/ETHNICITY</i>	8
<i>CREDIT HOURS ENROLLED BY DUAL CREDIT STUDENTS</i>	9
<i>GEOGRAPHIC REGION</i>	10
Dual Credit Course Count and Enrollment (duplicated)	10
<i>OVERALL COURSE COUNT AND ENROLLMENT</i>	10
<i>TRANSFER VERSUS CAREER AND TECHNICAL EDUCATION</i>	12
<i>INSTRUCTIONAL SITE</i>	15
Dual Credit Student Outcomes	15
<i>GRADUATION RATE</i>	15
<i>ADVANCEMENT RATE</i>	18
Bibliography	22
Appendix A	23
Appendix B	23
Appendix C	24

Suggested Citation:

Illinois Community College Board. (2025). *Dual Credit in the Illinois Community College System in Fiscal Year 2024*. Springfield, IL: Author.

INTRODUCTION

Dual credit instruction allows academically prepared high school students to simultaneously earn credits that count toward a high school diploma and a college degree. Dual credit instruction delivers a “win-win” arrangement for all parties: students gain access to challenging college-level coursework to make their junior and senior years of high school more productive; students can prove to others and themselves that they have the ability to succeed in college; college costs can be reduced for parents and students; time to degree at college can be shortened; and the enhanced high school and college faculty dialogue can contribute to a better alignment between secondary and postsecondary education. Consequently, as dual credit instruction has a positive impact on postsecondary completion, there is a growing emphasis among policy makers on the value of dual credit enrollment for all students and especially those who are traditionally underserved in higher education.

Highlights of Dual Credit in Fiscal Year 2024:

- In Illinois, during fiscal year 2024, a total of 91,017 individual (i.e., “unduplicated”) high school students enrolled in one or more community college dual credit courses.
- About one in five students (20.9 percent) taking one or more Illinois community college credit courses was a high school dual credit student.
- Illinois community colleges offered a total of 16,288 dual credit courses in fiscal year 2024, which was an increase of 11.3 percent from the previous year (N = 14,638).
- Overall, in fiscal year 2024, dual credit duplicated (seat count) enrollment (N = 182,093) increased 11.5 percent compared to one year ago (N = 163,283).
- High school students that took dual credit courses have substantially higher community college graduation rates and advancement rates than those students that did not enroll in dual credit coursework.

Data for this report derive from the Illinois Community College Board’s (ICCB) Centralized Data System and, specifically, the Annual Student Enrollment and Completion (A1) student-level submission (Appendix A Tables) and Annual Course Data (AC) student-level submission (Appendix B Tables) from Illinois community colleges. Information from the **A1 submission** is used in the report to describe the characteristics of high school students who enrolled in dual credit courses. A1 data are required for all students who are officially enrolled in a credit course at an Illinois community college any time during the specified fiscal year. A1 enrollments are **unduplicated** end-of-year counts. Duplicated enrollment and course data derive from ICCB **AC submissions**. AC enrollments are **duplicated**, meaning students are counted for each course they enroll in (e.g., a student enrolling in three dual credit courses is counted as three enrollments). The AC record submission includes dual credit identifier information that is used to generate dual credit course counts, enrollments, and average class sizes. For Illinois community colleges, student-level data is collected by ICCB for each fiscal year. A fiscal year represents student activity in a July 1 through June 30 academic year. Data for the graduation rate outcomes come from the Fall Enrollment (E1), A1 and Summer Graduate Reporting for the Integrated Postsecondary Education Data System (IPEDS) Graduation Rate Survey (GS) Data. Data for the advancement rate outcomes come from the A1, E1, GS and National Student Clearinghouse (NSC).

DUAL CREDIT DEFINITION AND LEGISLATIVE BACKGROUND

Dual credit is an instructional arrangement where an academically qualified high school student enrolls in a college-level course and, upon successful course completion, concurrently earns both college credit and high school credit. Dual credit reflects strong and well established secondary-to-postsecondary articulation and alignment.

The Dual Credit Quality Act ([Public Act 96-0194](#)) was approved by the governor on August 10, 2009, with an effective date of January 1, 2010. The Act required the ICCB and the Board of Higher Education (IBHE) to develop policies regarding dual credit. In 2018, the Dual Credit Quality Act was significantly amended outlining specific, required elements within dual credit partnership agreements and limiting out-of-state dual credit offerings. Although the general purpose of the Act remains the same, the Act gives school districts a greater ability to offer dual credit courses to students, as it requires a local community college to agree to offer such courses if a school district requests them. The law includes an “Illinois-first” clause that prohibits school districts from offering dual credit courses from out-of-state institutions without first asking an Illinois college if the same courses are offered there. The law helps to make college more affordable. The amended Dual Credit Quality Act ([Public Act 100-1049](#)) took effect January 1, 2019. Additionally, as part of the amended Dual Credit Quality Act and to advance dual credit in Illinois, ICCB and the Illinois State Board of Education (ISBE) established a committee and developed a [Model Partnership Agreement \(MPA\)](#) addressing the parameters of local school district-community college partnerships to offer dual credit (should the stakeholders not be able to reach agreement). The Agreement guides local partnerships between school districts and community colleges necessary for the successful implementation of quality dual credit courses and related student supports.

The instructors for dual credit courses shall be selected, employed, and evaluated by the postsecondary institution. Qualified instructors must hold the appropriate credentials and demonstrate teaching competencies. [The ICCB Administrative Rules](#) [Section 1501.507 (11)] outlines these minimally acceptable standards. Dual credit instructors must be able to participate in all activities available to adjunct faculty [[\(110 ILCS 27/\) Dual Credit Quality Act](#)]. ICCB, ISBE, and IBHE also collaborated to create a new endorsement for nine dual credit disciplines. A Dual Credit Endorsement, as designated by the amended Dual Credit Quality Act, is an endorsement valid for educators in grades 11-12 to be placed on the [Professional Educator License \(PEL\)](#) at the request of an instructor who meets the appropriate credential standards.

The Dual Credit Quality Act was amended via [Public Act 102-0516](#) on August 20, 2021, to require that within one year after the effective date (August 20, 2021), each community college district in partnership with the appropriate high schools, shall modify its dual credit plan to ensure access to dual credit courses by students with disabilities. The agreement shall provide that a student has access to the supplementary aids and accommodations included in the student's Individualized Education Program (IEP) while the student is accessing a dual credit course on a high school campus, in accordance with established practices at the high school, and a student who accesses a dual credit course on a community college campus has access to supplementary aids and accommodations provided in the partnership agreement, including access to the community college's disability services.

The amended Dual Credit Quality Act ([Public Act 102-0516](#)) further stipulated that each community college district shall provide access to higher education for students with disabilities, including, but not limited to, students with intellectual or developmental disabilities. Each community college is encouraged to offer for-credit and noncredit courses as deemed appropriate for the individual student based on the student's abilities, interests, and postsecondary transition goals, with the appropriate individualized supplementary aids and accommodations, including general education courses, career and technical education, vocational training, continuing education certificates, individualized learning paths, and life skills courses for students with disabilities. In addition, each community college is strongly encouraged to have its disability services coordinator participate in meetings held by high schools to provide information to the student's IEP team, including the student and the student's parents, about the community college and the availability of courses and programs at the community college.

Also taking effect on January 1, 2019, [Public Act 100-0792](#) amended the Illinois School Code by prohibiting a school board from capping the number of courses or credits a student can earn via dual credit if the courses are taught by an Illinois Instructor. Effective on January 1, 2022, [Public Act 102-0209](#) amended the accelerated placement language of the School Code. It states that for a student entering grade 12, the next most rigorous level of advanced coursework in English or mathematics shall be a dual credit course as defined in the Dual Credit Quality Act, an Advanced Placement course as defined in the College and Career Success for All Students Act, or an International Baccalaureate course. Under the current accelerated placement statute, no later than the beginning of the 2023-2024 school year, a school district's accelerated placement policy must allow for the automatic enrollment, in the following school term, of a student into the next most rigorous level of advanced coursework offered by the high school if the student meets or exceeds State standards in English language arts, mathematics, or science on a State assessment administered.

Similarly, [Public Act 101-0654](#) (known as the Education and Workforce Equity Act) requires by no later than the beginning of the 2023-2024 school year that each school district's accelerated placement policy include provisions for automatic enrollment, in the following school term, of a high school student into the next most rigorous level of advanced coursework. The next most rigorous level may include early college programs (dual credit, advanced placement, and international baccalaureate). The intent with the automatic enrollment approach is to allow even more equitable access and opportunity, regardless of student background, for advanced coursework including early college courses like dual credit.

Finally, [Public Act 102-1077](#), signed by the governor on June 10, 2022, amends the state's Dual Credit Quality Act to provide that a partnership agreement between a community college and a school district shall allow high school students who may not meet the community college's academic eligibility requirements to enroll in dual credit courses taught at the high school to receive high school credits. High schools are required to establish procedures to notify students enrolled in dual credit courses if they are eligible for both college and high school credits or just a high school credit.

On the national level, the growth of dual credit has prompted the National Center for Education Statistics (NCES) to adjust the Integrated Postsecondary Education Data System (IPEDS) collection beginning with the 2023-24 cycle. The new collection approach will allow NCES to provide information on dual credit and dual enrollment activity disaggregated by race/ethnicity and gender. NCES has indicated this new collection methodology will allow dually enrolled students to be distinguished from other students who are classified as non-degree/non-certificate students and provide a more comprehensive picture of the dual credit landscape across the country. NCES further justifies this adjustment by citing the growth in dually enrolled students and the potential implications for future college enrollment and credential/degree attainment as primary drivers for this adjustment. The information contained within this report for the Illinois Community College System is focused exclusively on dual credit activity where the students earn both high school and college credit and does not include activity that is dual enrollment where only college credit is earned. ICCB does have a longstanding collection of dually enrolled students within its Centralized Data System and is positioned well to submit the data on behalf of Illinois community colleges for NCES IPEDS reporting.

CHARACTERISTICS OF DUAL CREDIT STUDENTS (UNDUPLICATED)

OVERALL HEADCOUNT

The Illinois Community College System recorded a total of 91,017 high school students enrolled in dual credit courses during fiscal year 2024. Currently, **all** Illinois community colleges offer dual credit courses. **Table 1** provides the comparison of annual dual credit headcount enrollments in Illinois public community colleges in fiscal years 2020 through 2024. Annual dual credit enrollments increased 10.2 percent compared to the previous year (N = 82,602) and 31.3 percent compared to five years ago (N = 69,299). Among Illinois' 48 colleges, 28 colleges reported more than 1,000 dual credit enrollments in fiscal year 2024. **College of DuPage** reported the most dual credit enrollments (N = 8,825), followed by **Joliet Junior College** (N = 5,571), and **Harper College** (N = 5,528) (Appendix Table A-1).

Each of the 48 community colleges in Illinois provided dual credit courses in fiscal year 2024.

High school students enrolled in dual credit courses comprised **20.9 percent of all credit enrollment** (N = 435,426) at Illinois community colleges in fiscal year 2024. Dual credit students comprised more than twenty percent of all credit enrollments in twenty-eight Illinois community colleges, more than ten percent in 43 colleges, and fewer than five percent in one college. **Kaskaskia College** reported the largest proportion of dual credit enrollment in comparison to the college's total credit enrollment in fiscal year 2024 (46.2 percent), followed by **South Suburban College** (42.3 percent) and **Highland Community College** (37.6 percent) (Appendix Table A-2).

Table 1
**Comparison of Annual Dual Credit Enrollments in Illinois Public Community Colleges
Fiscal Years 2020-2024**

	FY 2020	FY 2021	FY 2022	FY 2023	FY 2024
Headcount	69,299	66,788	75,507	82,602	91,017
% Change	8.1%	-3.6%	13.1%	9.4%	10.2%

SOURCE OF DATA: ICCB Centralized Data System—Annual Enrollment and Completion (A1) Data

CHARACTERISTICS OF GENDER AND RACE/ETHNICITY

Table 2 shows that females constitute a slight majority (51.8 percent) of high school students enrolled in community college courses in fiscal year 2024 (Appendix Table A-3). Gender classifications are aligned with U.S. Department of Education collection and reporting standards.

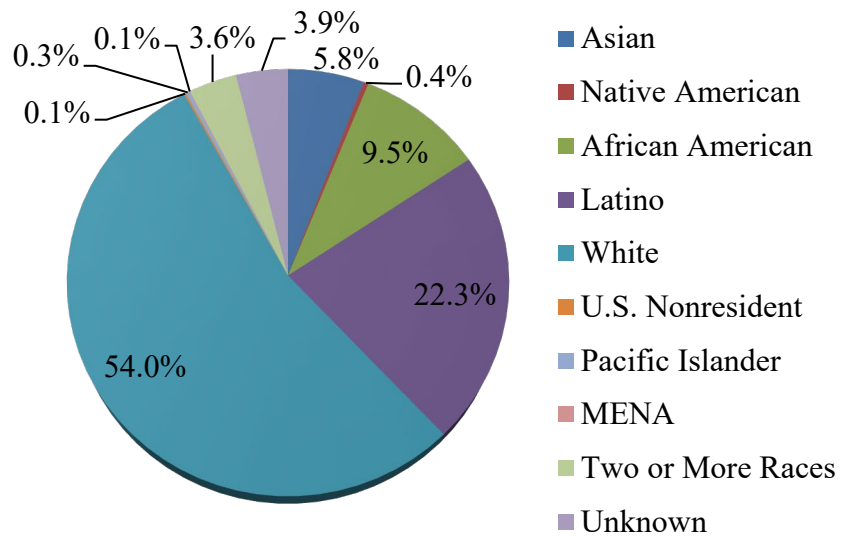
Table 2
Dual Credit Enrollment by Gender in Fiscal Year 2024

Gender	Number	Percent
Male	43,192	47.5%
Female	47,118	51.8%
Unknown or Another Gender	707	0.8%
Total	91,017	100.0%

SOURCE OF DATA: ICCB Centralized Data System—Annual Enrollment and Completion (A1) Data

Figure 1 depicts the race/ethnicity of high school students enrolling in community college dual credit courses in fiscal year 2024. More than half of dual credit students were White (54.0 percent). Latino dual credit students accounted for 22.3 percent and African American students for 9.5 percent in fiscal year 2024. Students identifying themselves as Asian (5.8 percent), Two or More Races (3.6 percent), Native American (0.4 percent), Pacific Islander (0.3 percent), U.S. Nonresident (0.1 percent), and Middle Eastern or North African (MENA; 0.1 percent) represented a small portion of dual credit students (Appendix Table A-4). Dual credit participation was lower among minority high school students than White high school students in fiscal year 2024. Out of 223,222 minority students (whose ethnicity was known) enrolled in credit coursework in Illinois public community colleges in fiscal year 2024, 17.2 percent of students were enrolled in dual credit courses (N = 38,298). In comparison, out of 195,419 White students enrolled in credit coursework in Illinois public community colleges in fiscal year 2024, 25.2 percent of students were enrolled in dual credit courses (N = 49,161).

Figure 1
Race/Ethnicity of High School Students Taking Dual Credit Courses in Fiscal Year 2024

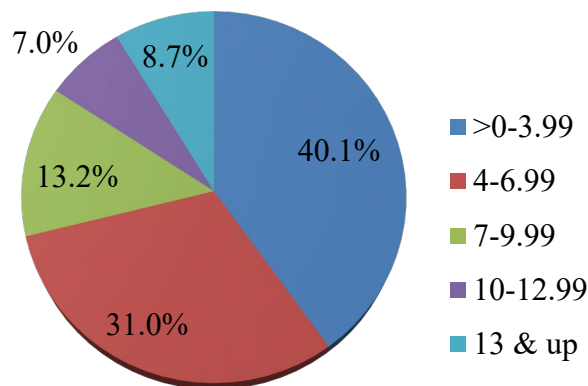


SOURCE OF DATA: ICCB Centralized Data System—Annual Enrollment and Completion (A1) Data

CREDIT HOURS ENROLLED BY DUAL CREDIT STUDENTS

Figure 2 displays dual credit enrollment by number of enrolled credit hours in fiscal year 2024. Of the 91,017 high school students that enrolled in dual credit coursework in fiscal year 2024, four out of ten students (40.1 percent) enrolled in college-level coursework of fewer than four credit hours, nearly one out of three students (31.0 percent) enrolled in between four and fewer than seven credit hours, one out of five students (20.2 percent) enrolled in between seven and fewer than thirteen credit hours, and one out of twelve students (8.7 percent) enrolled in 13 or more credit hours of college-level coursework in fiscal year 2024 (Appendix Table A-5).

Figure 2
Dual Credit Headcount Enrollment by Number of Enrolled Hours
Fiscal Year 2024

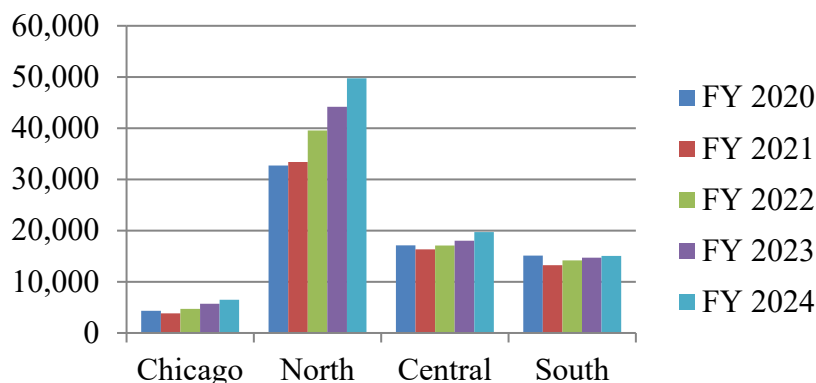


SOURCE OF DATA: ICCB Centralized Data System—Annual Enrollment and Completion (A1) Data

GEOGRAPHIC REGION

Figure 3 compares dual credit enrollment by geographic region. Illinois community colleges in the North region (N = 49,754) had the most dual credit students in fiscal year 2024 followed by the geographic regions of Central (N = 19,704), South (N = 15,061), and Chicago (N = 6,498). From fiscal year 2020 to 2024, the largest increase in dual credit occurred in North (+52.1 percent), followed by Chicago (+49.8 percent), and Central (+15.1 percent), while South experienced a decrease in dual credit enrollment (-0.4 percent). The list of colleges in each geographic region is provided in Appendix C.

Figure 3
Dual Credit Enrollment by Geographic Region in Fiscal Years 2020-2024



SOURCE OF DATA: ICCB Centralized Data System—Annual Enrollment and Completion (A1) Data

DUAL CREDIT COURSE COUNT AND ENROLLMENT (DUPLICATED)

In the following portion of the report, dual credit course count and enrollment data are organized by broad programmatic area based on the Program Classification Structure (PCS).

OVERALL COURSE COUNT AND ENROLLMENT

Illinois community colleges offered a total of 16,288 dual credit courses (duplicated) in fiscal year 2024, which was an increase 11.3 percent from the previous year (N = 14,638). Dual credit courses accounted for 12.2 percent of all credit courses (N = 133,490) and 14.3 percent of all Transfer or Career and Technical Education courses in fiscal year 2024 (N = 114,145). Appendix Table B-1 provides dual credit course count in fiscal years 2020 through 2024 for each community college. **Southwestern Illinois College** reported the most dual credit courses (N = 1,156), followed by **Rock Valley College** (N = 857) and **College of DuPage** (N = 844). Compared with the previous year, 37 colleges reported an increase in the number of dual credit courses, while nine reported decreases. Two colleges experienced little or no change (less than one percent).

Dual Credit in the Illinois Community College System in Fiscal Year 2024

Duplicated dual credit course enrollments totaled 182,093 in fiscal year 2024, which was an increase of 11.5 percent compared to 2023 (N = 163,283). Among Illinois' community colleges, 37 colleges reported increases in dual credit enrollments, while nine colleges exhibited decreases in comparison to fiscal year 2023. Two colleges experienced little or no change (less than one percent). Dual credit course enrollment accounted for 12.1 percent of all credit course enrollments (N = 1,504,910) and 13.6 percent of all Transfer or Career and Technical Education credit course enrollments (N = 1,342,430) in fiscal year 2024. **College of DuPage** reported the most dual credit enrollments (N = 13,363) in fiscal year 2024, followed by **McHenry County College** (N = 12,020) and **Southwestern Illinois College** (N = 10,124) (Appendix Table B-2).

More than one hundred eighty-two thousand enrollments occurred across dual credit courses in fiscal year 2024.

As seen in **Table 3**, the average dual credit class size was 11.2 students per class in fiscal year 2024, a 0.2 percent increase from 2023 (N = 11.2). The average dual credit class size ranged from 4.9 students at Wabash Valley College to 24.3 students at Kankakee Community College in fiscal year 2024 (Appendix Table B-3).

Table 3
Dual Credit Course Count, Enrollment (Duplicated), and Average Class Size
Fiscal Years 2020-2024

	2020	2021	2022	2023	2024
Number of Courses	12,569	13,314	13,543	14,638	16,288
Number of Enrollments	133,394	130,943	146,391	163,283	182,093
Average Class Size	10.6	9.8	10.8	11.2	11.2

Source of Data: ICCB Centralized Data System—Annual Course (AC) Data

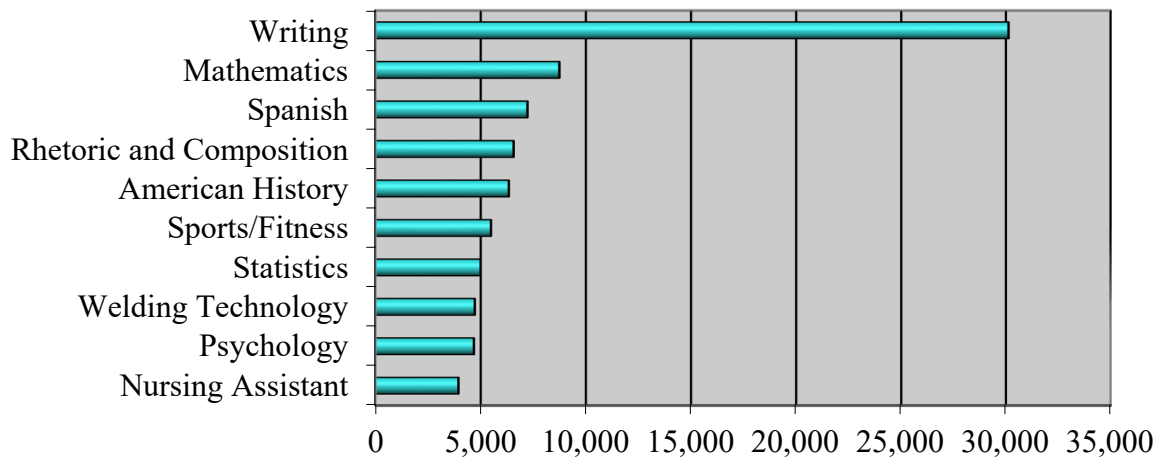
The Classification of Instructional Programs (CIP) was updated for 2020. The five highest dual credit course enrollments by program area (2-digit CIP) in fiscal year 2024 were in English Language and Literature/Letters (N = 38,907); Mathematics and Statistics (N = 16,562); Business, Management, Marketing, and Related Support Services (N = 16,540); Health Professions and Related Programs (N = 11,763); and Foreign Languages, Literatures, and Linguistics (N = 8,648) (Appendix Table B-14).

Appendix Table B-15 provides statewide dual credit course enrollment by Career Cluster. Guidance from the Department of Education resulted in the reclassification of some CIPs to the “Other / Transfer” category” in fiscal year 2020. Excluding the Other and non-CTE related CIPs, the top five Career Clusters in fiscal year 2024 were Science, Technology, Engineering and Mathematics (N = 29,937); Business Management and Administration (N = 17,044); Manufacturing (N = 12,729); Human Services (N = 11,374); and Education and Training (N = 8,113). The Career Cluster brand is a registered trademark of [Advance CTE](#).

Course enrollments in the ten largest programs accounted for 45.5 percent (N = 82,833) of all dual credit course enrollments in fiscal year 2024. As depicted in **Figure 4**, the ten highest dual credit enrollments overall by 6-digit Classification of Instructional Programs (CIP) code in fiscal year 2024 were in Writing, General, which was formerly reported under English Composition (N = 30,125); Mathematics, General (N = 8,743); Spanish Language and Literature (N = 7,226);

Rhetoric and Composition, which was formerly reported under Speech and Rhetorical Studies (N = 6,568); American History (United States) (N = 6,340); Sports, Kinesiology, and Physical Education/Fitness, General (N = 5,489); Statistics, General (N = 4,998); Welding Technology/Welder (N = 4,721); Psychology, General (N = 4,680); and Nursing Assistant/Aide and Patient Care Assistant/Aide (N = 3,943). All ten largest programs experienced increases from 2023 (Appendix Table B-4).

Figure 4
Top Ten Dual Credit Course Enrollments in Fiscal Year 2024

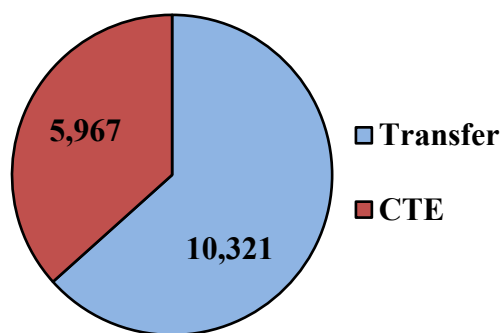


Source of Data: ICCB Centralized Data System—Annual Course (AC) Data

TRANSFER VERSUS CAREER AND TECHNICAL EDUCATION

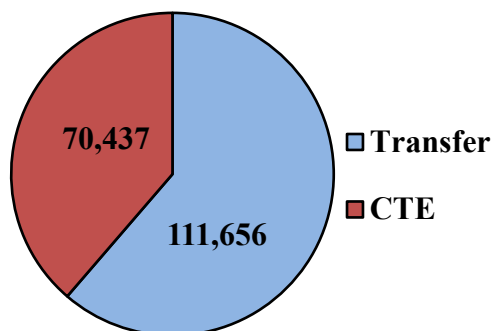
Figure 5 and Figure 6 depict dual credit course count and enrollment in Transfer courses and Career and Technical Education (CTE) courses in fiscal year 2024.

Figure 5
Dual Credit Course Count in Fiscal Year 2024



Source of Data: ICCB Centralized Data System—Annual Course (AC) Data

Figure 6
Dual Credit Course Enrollment in Fiscal Year 2024



Source of Data: ICCB Centralized Data System—Annual Course (AC) Data

As **Table 4** shows, Illinois community colleges offered 10,321 Transfer dual credit courses in fiscal year 2024 (Appendix Table B-5), which was 63.4 percent of all dual credit courses offered. This is a 12.0 percent increase compared to the previous year (N = 9,216). The average dual credit class size in Transfer education was 10.8 students in fiscal year 2024 (Appendix Table B-7).

Table 4
Transfer and CTE Dual Credit Course Count in Fiscal Years 2020-2024

	2020	2021	2022	2023	2024
Transfer	7,758	8,474	8,366	9,216	10,321
CTE	4,811	4,840	5,177	5,422	5,967
Total	12,569	13,314	13,543	14,638	16,288

Source of Data: ICCB Centralized Data System—Annual Course (AC) Data

As seen in **Table 5**, Transfer dual credit course enrollments (Appendix Table B-6) accounted for 61.3 percent of all dual credit course enrollments in fiscal year 2024. Enrollments in this area increased to 111,656 in fiscal year 2024, an increase of 11.2 percent from 2023 (N = 100,399). Appendix Table B-8 shows the top five enrollments in Transfer courses: Writing, General (N = 30,045); Mathematics, General (N = 8,743); Spanish Language and Literature (N = 7,226); Rhetoric and Composition (N = 6,542); and American History (United States) (N = 6,340). Enrollments in these five courses accounted for 32.3 percent of all dual credit enrollments in fiscal year 2024.

Table 5
Dual Credit Course Enrollment (Duplicated) in Transfer and CTE Courses
Fiscal Years 2020-2024

	2020	2021	2022	2023	2024
Transfer	79,231	83,720	89,366	100,399	111,656
CTE	54,163	47,223	57,025	62,884	70,437
Total	133,394	130,943	146,391	163,283	182,093

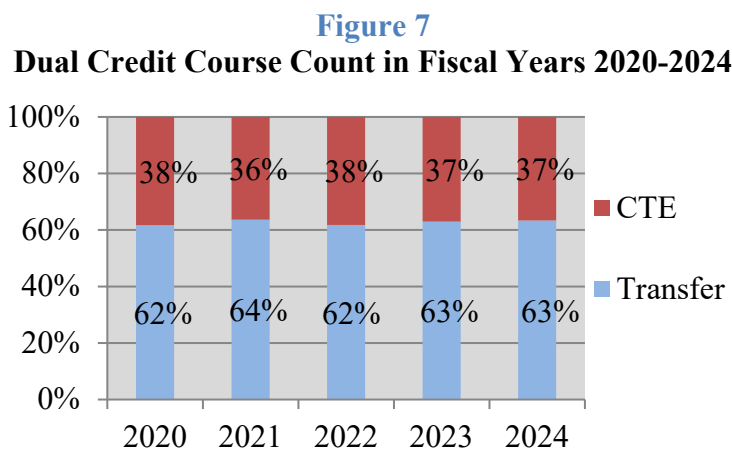
Source of Data: ICCB Centralized Data System—Annual Course (AC) Data

Dual Credit in the Illinois Community College System in Fiscal Year 2024

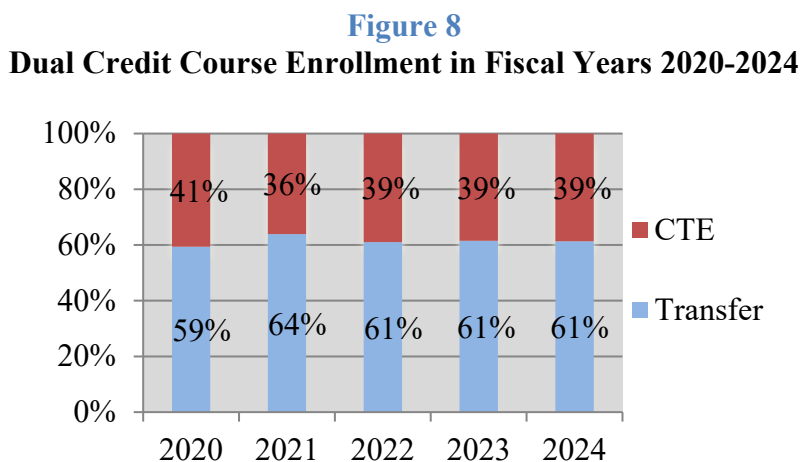
The Career and Technical Education dual credit course count was 5,967 in fiscal year 2024, which 36.6 percent of all dual credit courses offered. This is an increase of 10.1 percent from fiscal year 2023 (N = 5,422) (Appendix Table B-9). The average dual credit class size in this area was 11.8 students in fiscal year 2024 (Appendix Table B-11).

Dual credit course enrollments in Career and Technical Education increased to 70,437 in fiscal year 2024, which is a 12.0 percent increase over fiscal year 2023 (N = 62,884). Appendix Table B-12 shows that the highest enrollments in this area were in Welding Technology/Welder (N = 4,721); Nursing Assistant/Aide and Patient Care Assistant/Aide (N = 3,943); Entrepreneurship/Entrepreneurial Studies (N = 3,449); Medical Office Assistant/Specialist (N = 3,354); and Automobile/Automotive Mechanics Technology/Technician (N = 3,259). Enrollments in these five courses accounted for 10.3 percent of all dual credit enrollments in fiscal year 2024.

Figure 7 and **Figure 8** depict the proportion of Transfer and Career and Technical Education dual credit course counts and enrollments in fiscal years 2020 through 2024. The proportion of Transfer to CTE remained steady across the five years.



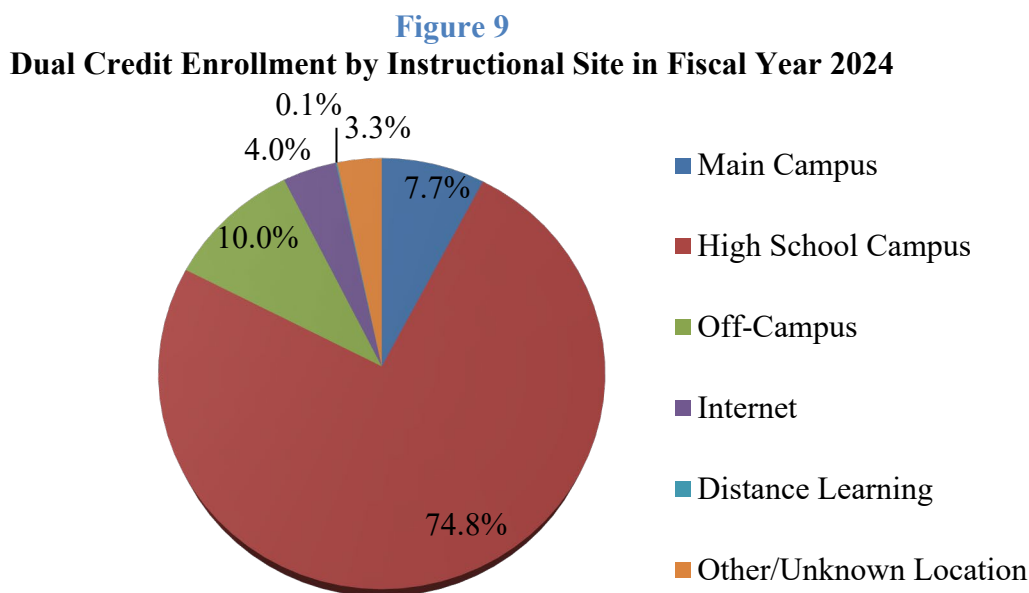
Source of Data: ICCB Centralized Data System—Annual Course (AC) Data



Source of Data: ICCB Centralized Data System—Annual Course (AC) Data

INSTRUCTIONAL SITE

Figure 9 displays dual credit enrollment by instructional site. In fiscal year 2024, three out of four high school dual credit students (74.8 percent) enrolled in dual credit courses at the high school campus. Nearly one in five high school dual credit students attended a main college campus (7.7 percent) or an off-campus college facility (10.0 percent). The remaining 7.4 percent of dual credit students either chose online/distance education classes (4.1 percent), or some other/unknown location (3.3 percent) to enroll in dual credit courses (Appendix Table B-16).



Source of Data: ICCB Centralized Data System—Annual Course (AC) Data

DUAL CREDIT STUDENT OUTCOMES

GRADUATION RATE

Graduation rate is a success outcome measure for postsecondary students that begin their studies pursuing a traditional full-time enrollment pattern. The primary postsecondary graduation rate collected through the U.S. Department of Education’s Integrated Postsecondary Education Data System (IPEDS) provides the percentage of first-time, full-time students who graduate within 150 percent of catalog time (i.e., 3 years for an associate degree or two years for a 30-credit short-term certificate).

Table 6 provides graduation rate by dual credit enrollment status. First-time, full-time students that took at least one dual credit course prior to graduating high school and enrolling at a community college have a substantially higher graduation rate than those students that did not enroll in dual credit coursework. For each of the last five tracking cohorts (Fall 2017-Fall 2021) the graduation rate for the dual credit subgroup was about 20 percent higher compared to students

that did not enroll in dual credit coursework. For the most recent cohort (Fall 2021), the dual credit subgroup had a graduation rate of 54.76 percent compared to 34.33 percent for non-dual credit students.

Table 6
Graduation Rate for Dual Credit Students
Illinois Community College First-Time, Full-Time Entering Cohort
Graduating within 150% of Catalog Program Time
Fall 2017-21 Cohorts

Dual Credit Prior to Enrollment in Community College	Fall 17 Cohort through Summer 20	Fall 18 Cohort through Summer 21	Fall 19 Cohort through Summer 22	Fall 20 Cohort through Summer 23	Fall 21 Cohort through Summer 24
Yes	2,892 / 6,022 48.02%	2,814 / 5,831 48.26%	2,879 / 5,913 48.69%	2,931 / 5,719 51.25%	3,164 / 5,778 54.76%
No	6,151 / 21,711 28.33%	6,194 / 21,512 28.79%	6,635 / 22,056 30.08%	5,978 / 18,042 33.13%	6,082 / 17,715 34.33%
Total	9,043 / 27,733 32.61%	9,008 / 27,343 32.94%	9,514 / 27,969 34.02%	8,909 / 23,761 37.49%	9,246 / 23,493 39.36%

Source of Data: ICCB Centralized Data System—Annual Enrollment and Completion (A1) Data, Fall Enrollment (E1) Data, and Summer Graduate Reporting for the IPEDS Graduation Rate Survey (GS)

Table 7 contains graduation rate disaggregated by dual credit enrollment status and race/ethnicity. Across all race/ethnicities in the Fall 2017 through Fall 2021 tracking cohorts, the graduation rate was higher for the dual credit student subgroup compared to the non-dual credit subgroup except for the Other subgroup in the Fall 2020 tracking cohort. In the most recent tracking cohort (Fall 2021), for the students that enrolled in dual credit courses at a community college prior to enrollment in the community college system, the graduation rate ranged from 12.49 percentage points for African American students to 27.39 percentage points for students of Two or More Races when comparing these subgroups to the non-dual credit subgroups. For Asian students, the graduation rate was 21.12 percentage points higher for dual credit students, for Other students it was 17.91 percentage points higher, for White students it was 17.49 percentage points higher, and for Hispanic/Latino students it was 13.88 percentage points higher.

Table 7
Graduation Rate for Dual Credit Students by Race/Ethnicity
Illinois Community College First-Time, Full-Time Entering Cohort
Graduating within 150% of Catalog Program Time
Fall 2017-21 Cohorts

<i>Race/ Ethnicity</i>	DC Prior to Enrollment in CC	Fall 17 Cohort through Summer 20	Fall 18 Cohort through Summer 21	Fall 19 Cohort through Summer 22	Fall 20 Cohort through Summer 23	Fall 21 Cohort through Summer 24
<i>African American</i>	Yes	77 / 323 23.84%	100 / 372 26.88%	71 / 295 24.07%	55 / 219 25.11%	64 / 205 31.22%
	No	443 / 3,106 14.26%	401 / 2,873 13.96%	447 / 2,836 15.76%	353 / 1,851 19.07%	362 / 1,933 18.73%
<i>Hispanic/ Latino</i>	Yes	366 / 967 37.85%	312 / 848 36.79%	439 / 1,045 42.01%	456 / 1,086 41.99%	434 / 1,037 41.85%
	No	1,530 / 5,951 25.71%	1,553 / 6,069 25.59%	1,592 / 6,303 25.26%	1,338 / 4,796 27.90%	1,411 / 5,044 27.97%
<i>Asian</i>	Yes	55 / 150 36.67%	61 / 153 39.87%	96 / 157 61.15%	114 / 213 53.52%	128 / 223 57.40%
	No	268 / 855 31.35%	331 / 980 33.78%	325 / 995 32.66%	289 / 843 34.28%	320 / 882 36.28%
<i>Two or More Races</i>	Yes	61 / 169 36.09%	78 / 202 38.61%	72 / 193 37.31%	72 / 186 38.71%	122 / 222 54.95%
	No	150 / 717 20.92%	174 / 759 22.92%	190 / 748 25.40%	175 / 625 28.00%	153 / 555 27.57%
<i>White</i>	Yes	2,289 / 4,305 53.17%	2,215 / 4,148 53.40%	2,125 / 4,081 52.07%	2,175 / 3,893 55.87%	2,333 / 3,943 59.17%
	No	3,549 / 10,300 34.46%	3,487 / 10,031 34.76%	3,803 / 10,330 36.82%	3,575 / 9,212 38.81%	3,544 / 8,504 41.67%
<i>Other*</i>	Yes	8 / 20 40.00%	8 / 22 36.36%	12 / 27 44.44%	4 / 12 33.33%	13 / 23 56.52%
	No	73 / 284 25.70%	91 / 285 31.93%	123 / 316 38.92%	79 / 226 34.96%	122 / 316 38.61%
<i>Unknown</i>	Yes	36 / 88 40.91%	40 / 86 46.51%	64 / 115 55.65%	55 / 110 50.00%	70 / 125 56.00%
	No	138 / 498 27.71%	157 / 515 30.49%	155 / 528 29.36%	169 / 489 34.56%	170 / 481 35.34%
<i>Total</i>	Yes	2,892 / 6,022 48.02%	2,814 / 5,831 48.26%	2,879 / 5,913 48.69%	2,931 / 5,719 51.25%	3,164 / 5,778 54.76%
	No	6,151 / 21,711 28.33%	6,194 / 21,512 28.79%	6,635 / 22,056 30.08%	5,978 / 18,042 33.13%	6,082 / 17,715 34.33%

*Other consists of American Indian or Alaska Native, Native Hawaiian or Other Pacific Islander, and U.S. Nonresident
Source of Data: ICCB Centralized Data System—Annual Enrollment and Completion (A1) Data, Fall Enrollment (E1) Data, and Summer Graduate Reporting for the IPEDS Graduation Rate Survey (GS)

In **Table 8**, graduation rate is provided for students that enrolled in dual credit courses at a community college prior to enrollment in the community college system by Pell recipient subgroup. Across the last five tracking cohorts (Fall 2017-Fall 2021), Pell recipient students that enrolled in a dual credit course while in high school had a substantially higher graduation rate than those that did not enroll in a dual credit course. In the most recent tracking cohort (Fall 2021), the graduation rate for the Pell recipient dual credit subgroup was higher by 18.95 percentage points than the graduation rate for those Pell recipients that were non-dual credit. For Non-Pell recipients, the graduation rate was 20.17 percentage points higher for the dual credit student subgroup compared to the non-dual credit subgroup.

Table 8
Graduation Rate for Dual Credit Students by Pell Recipient
Illinois Community College First-Time, Full-Time Entering Cohort
Graduating within 150% of Catalog Program Time
Fall 2017-21 Cohorts

<i>Pell Recipient Status</i>	DC Prior to Enrollment in CC	Fall 17 Cohort through Summer 20	Fall 18 Cohort through Summer 21	Fall 19 Cohort through Summer 22	Fall 20 Cohort through Summer 23	Fall 21 Cohort through Summer 24
<i>Pell Recipient</i>	Yes	1,027 / 2,429 42.28%	968 / 2,289 42.29%	1,010 / 2,401 42.07%	876 / 1,969 44.49%	1,033 / 2,140 48.27%
	No	2,595 / 10,578 24.53%	2,478 / 9,842 25.18%	2,772 / 10,709 25.88%	2,131 / 7,496 28.43%	2,332 / 7,952 29.33%
<i>Non-Pell Recipient</i>	Yes	1,865 / 3,593 51.91%	1,846 / 3,542 52.12%	1,869 / 3,512 53.22%	2,055 / 3,750 54.80%	2,131 / 3,638 58.58%
	No	3,556 / 11,133 31.94%	3,716 / 11,670 31.84%	3,863 / 11,347 34.04%	3,847 / 10,546 36.48%	3,750 / 9,763 38.41%
<i>Total</i>	Yes	2,892 / 6,022 48.02%	2,814 / 5,831 48.26%	2,879 / 5,913 48.69%	2,931 / 5,719 51.25%	3,164 / 5,778 54.76%
	No	6,151 / 21,711 28.33%	6,194 / 21,512 28.79%	6,635 / 22,056 30.08%	5,978 / 18,042 33.13%	6,082 / 17,715 34.33%

Source of Data: ICCB Centralized Data System—Annual Enrollment and Completion (A1) Data, Fall Enrollment (E1) Data, and Summer Graduate Reporting for the IPEDS Graduation Rate Survey (GS)

ADVANCEMENT RATE

Community colleges urge students to complete their associate degrees prior to transferring to a four-year institution. Still, a substantial number of community college students generate a considerable amount of credit hours but then transfer to a four-year institution prior to receiving the associate degree. The federal IPEDS formula for calculating graduation rate does not include transfer-outs prior to credential attainment or those still persisting at the community college, and thus negatively impacts graduation rate outcomes. To provide a more comprehensive view of student success at community colleges, ICCB calculates the **advancement rate** to include students who either graduated, transferred to other higher education institutions, or were still enrolled at the end of the 150% of catalog time observation period.

Table 9 represents student advancement rate which utilizes the same tracking cohorts as graduation rate. First-time, full-time students that took at least one dual credit course prior to graduating high school and enrolling at a community college have a considerably higher advancement rate than those students that did not enroll in dual credit coursework. In the last five tracking cohorts (Fall 2017-Fall 2021) the advancement rate was 10-15 percentage points higher for the dual credit subgroup compared to students that did not enroll in dual credit coursework while in high school. For the most recent cohort (Fall 2021), the dual credit subgroup had an advancement rate of 76.96 percent compared to 63.85 percent for non-dual credit students.

Table 9
Advancement Rate for Dual Credit Students
Illinois Community College First-Time, Full-Time Entering Cohort
Graduating, Transferring-Out, or Still-Enrolled at 150% of Catalog Program Time
Fall 2017-21 Cohorts

Dual Credit Prior to Enrollment in Community College	Fall 17 Cohort through Summer 20	Fall 18 Cohort through Summer 21	Fall 19 Cohort through Summer 22	Fall 20 Cohort through Summer 23	Fall 21 Cohort through Summer 24
Yes	4,451 / 6,022 73.91%	4,258 / 5,831 73.02%	4,242 / 5,913 71.74%	4,303 / 5,719 75.24%	4,447 / 5,778 76.96%
No	12,792 / 21,711 58.92%	12,678 / 21,512 58.93%	12,986 / 22,056 58.88%	11,727 / 18,042 65.00%	11,311 / 17,715 63.85%
Total	17,243 / 27,733 62.18%	16,936 / 27,343 61.94%	17,228 / 27,969 61.60%	16,030 / 23,761 67.46%	15,758 / 23,493 67.08%

Source of Data: ICCB Centralized Data System—Annual Enrollment and Completion (A1) Data, Fall Enrollment (E1) Data, Summer Graduate Reporting for the IPEDS Graduation Rate Survey (GS), and National Student Clearinghouse (NSC)

Table 10 provides identical information as Table 9 but is disaggregated by race/ethnicity. In the last five tracking cohorts (Fall 2017-Fall 2021) the advancement rate was consistently higher for the dual credit subgroup across all race/ethnicities except the Other race/ethnicity (Fall 2018 and Fall 2020 cohort). In the most recent tracking cohort (Fall 2021), for the students that enrolled in dual credit courses at a community college prior to enrollment in the community college system, the advancement rate ranged from 9.12 percentage points for Other students to 14.68 percentage points for students of Two or More Races higher than non-dual credit students. For Hispanic/Latino students, the advancement rate was 11.83 percentage points higher for dual credit students, for Asian students it was 11.69 percentage points higher, for African American students it was 9.81 percentage points higher, and for White students it was 9.49 percentage points higher.

Table 10

**Advancement Rate for Dual Credit Students by Race/Ethnicity
Illinois Community College First-Time, Full-Time Entering Cohort
Graduating, Transferring-Out, or Still-Enrolled at 150% of Catalog Program Time
Fall 2017-21 Cohorts**

<i>Race/ Ethnicity</i>	DC Prior to Enrollment in CC	Fall 17 Cohort through Summer 20	Fall 18 Cohort through Summer 21	Fall 19 Cohort through Summer 22	Fall 20 Cohort through Summer 23	Fall 21 Cohort through Summer 24
<i>African American</i>	Yes	177 / 323 54.80%	208 / 372 55.91%	156 / 295 52.88%	130 / 219 59.36%	125 / 205 60.98%
	No	1,362 / 3,106 43.85%	1,267 / 2,873 44.10%	1,249 / 2,836 44.04%	997 / 1,851 53.86%	989 / 1,933 51.16%
<i>Hispanic/ Latino</i>	Yes	624 / 967 64.53%	538 / 848 63.44%	694 / 1,045 66.41%	751 / 1,086 69.15%	708 / 1,037 68.27%
	No	3,244 / 5,951 54.51%	3,297 / 6,069 54.33%	3,340 / 6,303 52.99%	2,789 / 4,796 58.15%	2,847 / 5,044 56.44%
<i>Asian</i>	Yes	125 / 150 83.33%	117 / 153 76.47%	134 / 157 85.35%	177 / 213 83.10%	198 / 223 88.79%
	No	646 / 855 75.56%	738 / 980 75.31%	721 / 995 72.46%	658 / 843 78.05%	680 / 882 77.10%
<i>Two or More Races</i>	Yes	107 / 169 63.31%	134 / 202 66.34%	128 / 193 66.32%	121 / 186 65.05%	167 / 222 75.23%
	No	379 / 717 52.86%	433 / 759 57.05%	405 / 748 54.14%	384 / 625 61.44%	336 / 555 60.54%
<i>White</i>	Yes	3,335 / 4,305 77.47%	3,194 / 4,148 77.00%	3,021 / 4,081 74.03%	3,036 / 3,893 77.99%	3,137 / 3,943 79.56%
	No	6,727 / 10,300 65.31%	6,467 / 10,031 64.47%	6,766 / 10,330 65.50%	6,430 / 9,212 69.80%	5,959 / 8,504 70.07%
<i>Other*</i>	Yes	17 / 20 85.00%	12 / 22 54.55%	20 / 27 74.07%	6 / 12 50.00%	16 / 23 69.57%
	No	143 / 284 50.35%	174 / 285 61.05%	192 / 316 60.76%	146 / 226 64.60%	191 / 316 60.44%
<i>Unknown</i>	Yes	66 / 88 75.00%	55 / 86 63.95%	89 / 115 77.39%	82 / 110 74.55%	96 / 125 76.80%
	No	291 / 498 58.43%	302 / 515 58.64%	313 / 528 59.28%	323 / 489 66.05%	309 / 481 64.24%
<i>Total</i>	Yes	4,451 / 6,022 73.91%	4,258 / 5,831 73.02%	4,242 / 5,913 71.74%	4,303 / 5,719 75.24%	4,447 / 5,778 76.96%
	No	12,792 / 21,711 58.92%	12,678 / 21,512 58.93%	12,986 / 22,056 58.88%	11,727 / 18,042 65.00%	11,311 / 17,715 63.85%

*Other consists of American Indian or Alaska Native, Native Hawaiian or Other Pacific Islander, and U.S. Nonresident

Source of Data: ICCB Centralized Data System—Annual Enrollment and Completion (A1) Data, Fall Enrollment (E1) Data, Summer Graduate Reporting for the IPEDS Graduation Rate Survey (GS), and National Student Clearinghouse (NSC)

Table 11 represents advancement rate for students that enrolled in dual credit courses at a community college prior to enrollment in the community college system by Pell recipient subgroup. The Pell recipient subgroup, across the last five years, that enrolled in a dual credit course while in high school had a substantially higher advancement rate than those that did not enroll in a dual credit course. In the most recent tracking cohort (Fall 2021), the advancement rate for the Pell recipient dual credit subgroup was higher by 12.11 percentage points than the advancement rate for those Pell recipients that were non-dual credit. For Non-Pell recipients, the advancement rate was 12.40 percentage points higher for the dual credit student subgroup compared to the non-dual credit subgroup.

Table 11
Advancement Rate for Dual Credit Students by Pell Recipient
Illinois Community College First-Time, Full-Time Entering Cohort
Graduating, Transferring-Out, or Still-Enrolled at 150% of Catalog Program Time
Fall 2017-21 Cohorts

<i>Pell Recipient Status</i>	DC Prior to Enrollment in CC	Fall 17 Cohort through Summer 20	Fall 18 Cohort through Summer 21	Fall 19 Cohort through Summer 22	Fall 20 Cohort through Summer 23	Fall 21 Cohort through Summer 24
<i>Pell Recipient</i>	Yes	1,652 / 2,429 68.01%	1,535 / 2,289 67.06%	1,571 / 2,401 65.43%	1,374 / 1,969 69.78%	1,502 / 2,140 70.19%
	No	5,706 / 10,578 53.94%	5,328 / 9,842 54.14%	5,675 / 10,709 52.99%	4,448 / 7,496 59.34%	4,618 / 7,952 58.07%
<i>Non-Pell Recipient</i>	Yes	2,799 / 3,593 77.90%	2,723 / 3,542 76.88%	2,671 / 3,512 76.05%	2,929 / 3,750 78.11%	2,945 / 3,638 80.95%
	No	7,086 / 11,133 63.65%	7,350 / 11,670 62.98%	7,311 / 11,347 64.43%	7,279 / 10,546 69.02%	6,693 / 9,763 68.55%
<i>Total</i>	Yes	4,451 / 6,022 73.91%	4,258 / 5,831 73.02%	4,242 / 5,913 71.74%	4,303 / 5,719 75.24%	4,447 / 5,778 76.96%
	No	12,792 / 21,711 58.92%	12,678 / 21,512 58.93%	12,986 / 22,056 58.88%	11,727 / 18,042 65.00%	11,311 / 17,715 63.85%

Source of Data: ICCB Centralized Data System—Annual Enrollment and Completion (A1) Data, Fall Enrollment (E1) Data, Summer Graduate Reporting for the IPEDS Graduation Rate Survey (GS), and National Student Clearinghouse (NSC)

BIBLIOGRAPHY

- Advance CTE: State Leaders Connecting Learning to Work. (2023). Career Clusters. Silver Spring, Maryland. <https://careertech.org/career-clusters>
- Illinois 96th General Assembly. (2009). Higher Education (096-0194) Dual Credit Quality Act. Springfield, IL: Illinois General Assembly. <http://www.ilga.gov/legislation/publicacts/fulltext.asp?Name=096-0194>
- Illinois 100th General Assembly (2018). Higher Education (110 ILCS 27/) Dual Credit Quality Act. Springfield, IL: Illinois General Assembly. <http://www.ilga.gov/legislation/ilcs/ilcs3.asp?ActID=3117&ChapterID=18>
- Illinois 100th General Assembly. (2018). Public Act 100-0792. Springfield, IL: Illinois General Assembly. <http://www.ilga.gov/legislation/publicacts/fulltext.asp?Name=100-0792>
- Illinois 100th General Assembly. (2018). Public Act 100-1049. Springfield, IL: Illinois General Assembly. <http://www.ilga.gov/legislation/publicacts/fulltext.asp?Name=100-1049>
- Illinois 101st General Assembly. (2021). Public Act 101-0654. Springfield, IL: Illinois General Assembly. <https://www.ilga.gov/legislation/publicacts/101/101-0654.htm>
- Illinois 102nd General Assembly. (2022). Public Act 102-0209. Springfield, IL: Illinois General Assembly. <https://www.ilga.gov/legislation/publicActs/fulltext.asp?Name=102-0209&GA=102>
- Illinois 102nd General Assembly. (2022). Public Act 102-0516. Springfield, IL: Illinois General Assembly. <https://www.ilga.gov/legislation/publicacts/fulltext.asp?Name=102-0516>
- Illinois 102nd General Assembly. (2022). Public Act 102-1077. Springfield, IL: Illinois General Assembly. <https://www.ilga.gov/legislation/publicacts/fulltext.asp?Name=102-1077>
- Illinois Community College Board. (July 2024). Administrative Rules of the Illinois Community College Board. Springfield, IL: Illinois Community College Board. http://www2.iccb.org/iccb/wp-content/pdfs/manuals/ICCB_SystemRules_Manual.pdf
- Illinois Community College Board. (2020). Dual Credit. Springfield, IL: Illinois Community College Board. http://www2.iccb.org/academic_affairs/dual-credit/
- Illinois State Board of Education. (2020). Professional Educator License. Springfield, IL: Illinois State Board of Education. <https://www.isbe.net/Pages/Professional-Educator-License.aspx>

APPENDIX A

Unduplicated Enrollment Counts

- A-1 Dual Credit Headcount Enrollment by College, FY 2020-2024
- A-2 Dual Credit Headcount Enrollment vs. Overall Credit Enrollment by College, FY 2024
- A-3 Dual Credit Headcount Enrollment by Gender and by College, FY 2024
- A-4 Dual Credit Headcount Enrollment by Ethnic Origin and by College, FY 2024
- A-5 Dual Credit Headcount Enrollment by Number of Enrolled Hours and by College, FY 2024

APPENDIX B

Duplicated Course and Enrollment Counts

- B-1 Dual Credit Course Count by College, FY 2020-2024
- B-2 Dual Credit Course Enrollment by College, FY 2020-2024
- B-3 Average Dual Credit Class Size by College, FY 2020-2024
- B-4 Top Ten Dual Credit Course Enrollments by CIP, FY 2020-2024
- B-5 Dual Credit Course Count by College in Transfer Education, FY 2020-2024
- B-6 Dual Credit Course Enrollment by College in Transfer Education, FY 2020-2024
- B-7 Average Dual Credit Class Size by College in Transfer Education, FY 2020-2024
- B-8 Top Five Dual Credit Course Enrollments by College in Transfer Education, FY 2024
- B-9 Dual Credit Course Count by College in Career and Technical Education, FY 2020-2024
- B-10 Dual Credit Course Enrollment by College in Career and Technical Education, FY 2020-2024
- B-11 Average Dual Credit Class Size by College in Career and Technical Education, FY 2020-2024
- B-12 Top Five Dual Credit Course Enrollments by College in Career and Technical Education, FY 2024
- B-13 Dual Credit Course Enrollment by 6-digit CIP, FY 2020-2024
- B-14 Dual Credit Course Enrollment by 2-digit CIP, FY 2020-2024
- B-15 Dual Credit Course Enrollment by Career Cluster, FY 2020-2024
- B-16 Dual Credit Course Enrollment by Instructional Site and by College, FY 2024

APPENDIX C

Illinois Community Colleges by Geographic Regions

Chicago: Harold Washington College, Harry S Truman College, Kennedy-King College, Malcolm X College, Olive-Harvey College, Richard J. Daley College, Wilbur Wright College

North: College of DuPage, College of Lake County, Elgin Community College, Harper College, Highland Community College, Kishwaukee College, McHenry County College, Moraine Valley Community College, Morton College, Oakton Community College, Prairie State College, Rock Valley College, Sauk Valley Community College, South Suburban College, Triton College, Waubensee Community College

Central: Black Hawk College, Carl Sandburg College, Danville Area Community College, Heartland Community College, Illinois Central College, Illinois Valley Community College, John Wood Community College, Joliet Junior College, Kankakee Community College, Lincoln Land Community College, Parkland College, Richland Community College, Spoon River College

South: Frontier Community College, John A. Logan College, Kaskaskia College, Lake Land College, Lewis and Clark Community College, Lincoln Trail College, Olney Central College, Rend Lake College, Shawnee Community College, Southeastern Illinois College, Southwestern Illinois College, Wabash Valley College



Illinois Community College Board
Table A-1
DUAL CREDIT HEADCOUNT ENROLLMENT BY COLLEGE
FISCAL YEARS 2020-2024

Dist. <u>No. District/College</u>	FY 2020 <u>Headcount</u>	FY 2021 <u>Headcount</u>	FY 2022 <u>Headcount</u>	FY 2023 <u>Headcount</u>	FY 2024 <u>Headcount</u>	% Change <u>2020-2024</u>	% Change <u>2023-2024</u>
503 Black Hawk	1,212	1,251	1,197	1,279	1,364	12.5%	6.6%
518 Carl Sandburg	580	625	618	629	668	15.2%	6.2%
508 City Colleges of Chicago	(4,337)	(3,828)	(4,717)	(5,698)	(6,498)	(49.8%)	(14.0%)
02 Harold Washington	727	715	933	1,029	1,019	40.2%	-1.0%
04 Harry S Truman	299	399	394	550	815	172.6%	48.2%
01 Kennedy-King	276	258	371	547	867	214.1%	58.5%
03 Malcolm X	369	293	453	646	640	73.4%	-0.9%
05 Olive-Harvey	414	337	441	476	694	67.6%	45.8%
06 Richard J. Daley	1,014	775	976	1,148	1,300	28.2%	13.2%
07 Wilbur Wright	1,238	1,051	1,149	1,302	1,163	-6.1%	-10.7%
502 College of DuPage	5,694	5,154	5,847	7,391	8,825	55.0%	19.4%
532 College of Lake County	1,841	1,551	2,228	3,073	3,795	106.1%	23.5%
507 Danville Area	1,018	719	729	793	752	-26.1%	-5.2%
509 Elgin	380	845	1,031	1,562	2,035	435.5%	30.3%
512 Harper	4,605	5,120	4,982	5,300	5,528	20.0%	4.3%
540 Heartland	1,595	1,792	1,941	1,981	2,109	32.2%	6.5%
519 Highland	934	814	1,072	983	1,139	21.9%	15.9%
514 Illinois Central	2,312	2,141	2,252	2,179	2,380	2.9%	9.2%
529 Illinois Eastern	(1,224)	(1,249)	(1,201)	(1,167)	(1,235)	(0.9%)	(5.8%)
04 Frontier	569	618	367	434	468	-17.8%	7.8%
01 Lincoln Trail	223	223	207	252	246	10.3%	-2.4%
02 Olney Central	229	226	363	256	325	41.9%	27.0%
03 Wabash Valley	203	182	264	225	196	-3.4%	-12.9%
513 Illinois Valley	825	719	786	831	1,049	27.2%	26.2%
530 John A. Logan	1,011	1,079	1,136	914	856	-15.3%	-6.3%
539 John Wood	233	261	250	355	378	62.2%	6.5%
525 Joliet Junior	4,773	4,500	4,965	5,057	5,571	16.7%	10.2%
520 Kankakee	659	671	656	656	632	-4.1%	-3.7%
501 Kaskaskia	2,145	1,949	2,415	2,619	2,652	23.6%	1.3%
523 Kishwaukee	650	693	622	714	812	24.9%	13.7%
517 Lake Land	1,536	1,438	1,498	1,405	1,474	-4.0%	4.9%
536 Lewis and Clark	3,752	2,578	1,896	1,942	1,960	-47.8%	0.9%
526 Lincoln Land	1,531	1,538	1,555	1,827	2,048	33.8%	12.1%
528 McHenry County	2,414	3,459	4,678	4,837	4,347	80.1%	-10.1%
524 Moraine Valley	3,613	3,393	3,898	4,187	4,595	27.2%	9.7%
527 Morton	914	548	920	1,094	1,140	24.7%	4.2%
535 Oakton	2,635	2,493	2,860	3,429	3,816	44.8%	11.3%
505 Parkland	1,019	868	862	1,006	1,256	23.3%	24.9%
515 Prairie State	717	449	656	463	630	-12.1%	36.1%
521 Rend Lake	933	792	840	749	823	-11.8%	9.9%
537 Richland	1,021	897	935	995	1,115	9.2%	12.1%
511 Rock Valley	691	844	1,237	604	1,551	124.5%	156.8%
506 Sauk Valley	713	633	641	639	771	8.1%	20.7%
531 Shawnee	425	394	330	478	497	16.9%	4.0%
510 South Suburban	2,463	2,305	3,373	3,587	3,355	36.2%	-6.5%
533 Southeastern Illinois	858	801	777	796	767	-10.6%	-3.6%
522 Southwestern Illinois	3,236	2,961	4,074	4,654	4,797	48.2%	3.1%
534 Spoon River	344	340	336	420	382	11.0%	-9.0%
504 Triton	1,939	2,314	2,365	2,657	3,378	74.2%	27.1%
516 Waubensee	<u>2,517</u>	<u>2,782</u>	<u>3,131</u>	<u>3,652</u>	<u>4,037</u>	<u>60.4%</u>	<u>10.5%</u>
TOTALS/AVERAGES	69,299	66,788	75,507	82,602	91,017	31.3%	10.2%

SOURCE OF DATA: ICCB Centralized Data System--Annual Enrollment and Completion (A1) Data



Illinois Community College Board
Table A-2
DUAL CREDIT HEADCOUNT ENROLLMENT VS.
OVERALL CREDIT ENROLLMENT BY COLLEGE
FISCAL YEAR 2024

Dist.	<u>No. District/College</u>	<u>Dual Credit</u>	<u>Total Credit</u>	<u>% Dual Credit</u>
503	Black Hawk	1,364	6,072	22.5%
518	Carl Sandburg	668	2,308	28.9%
508	City Colleges of Chicago	(6,498)	(62,043)	(10.5%)
02	Harold Washington	1,019	8,446	12.1%
04	Harry S Truman	815	10,719	7.6%
01	Kennedy-King	867	4,487	19.3%
03	Malcolm X	640	12,016	5.3%
05	Olive-Harvey	694	4,587	15.1%
06	Richard J. Daley	1,300	9,786	13.3%
07	Wilbur Wright	1,163	12,002	9.7%
502	College of DuPage	8,825	41,539	21.2%
532	College of Lake County	3,795	22,299	17.0%
507	Danville Area	752	3,274	23.0%
509	Elgin	2,035	15,160	13.4%
512	Harper	5,528	22,904	24.1%
540	Heartland	2,109	7,665	27.5%
519	Highland	1,139	3,031	37.6%
514	Illinois Central	2,380	10,579	22.5%
529	Illinois Eastern	(1,235)	(16,029)	(7.7%)
04	Frontier	468	12,801	3.7%
01	Lincoln Trail	246	752	32.7%
02	Olney Central	325	1,252	26.0%
03	Wabash Valley	196	1,224	16.0%
513	Illinois Valley	1,049	4,031	26.0%
530	John A. Logan	856	5,300	16.2%
539	John Wood	378	2,629	14.4%
525	Joliet Junior	5,571	20,583	27.1%
520	Kankakee	632	3,940	16.0%
501	Kaskaskia	2,652	5,741	46.2%
523	Kishwaukee	812	3,872	21.0%
517	Lake Land	1,474	8,745	16.9%
536	Lewis and Clark	1,960	5,689	34.5%
526	Lincoln Land	2,048	9,697	21.1%
528	McHenry County	4,347	13,303	32.7%
524	Moraine Valley	4,595	17,956	25.6%
527	Morton	1,140	5,879	19.4%
535	Oakton	3,816	17,467	21.8%
505	Parkland	1,256	9,633	13.0%
515	Prairie State	630	6,382	9.9%
521	Rend Lake	823	3,428	24.0%
537	Richland	1,115	3,704	30.1%
511	Rock Valley	1,551	9,280	16.7%
506	Sauk Valley	771	2,552	30.2%
531	Shawnee	497	2,798	17.8%
510	South Suburban	3,355	7,937	42.3%
533	Southeastern Illinois	767	3,275	23.4%
522	Southwestern Illinois	4,797	15,081	31.8%
534	Spoon River	382	1,699	22.5%
504	Triton	3,378	16,508	20.5%
516	Waubonsee	<u>4,037</u>	<u>15,414</u>	<u>26.2%</u>
TOTALS		91,017	435,426	20.9%

SOURCE OF DATA: ICCB Centralized Data System--Annual Enrollment and Completion (A1) Data



Illinois Community College Board

Table A-3

DUAL CREDIT HEADCOUNT ENROLLMENT BY GENDER* AND BY COLLEGE
FISCAL YEAR 2024

Dist. No.	District/College	Male	Female	Unknown or Another Gender	Total
503	Black Hawk	572	785	7	1,364
518	Carl Sandburg	255	405	8	668
508	City Colleges of Chicago	(2,889)	(3,605)	(4)	(6,498)
02	Harold Washington	437	581	1	1,019
04	Harry S Truman	422	393	0	815
01	Kennedy-King	378	488	1	867
03	Malcolm X	224	416	0	640
05	Olive-Harvey	315	379	0	694
06	Richard J. Daley	600	699	1	1,300
07	Wilbur Wright	513	649	1	1,163
502	College of DuPage	4,176	4,584	65	8,825
532	College of Lake County	1,832	1,897	66	3,795
507	Danville Area	343	408	1	752
509	Elgin	970	1,036	29	2,035
512	Harper	2,577	2,941	10	5,528
540	Heartland	941	1,153	15	2,109
519	Highland	559	564	16	1,139
514	Illinois Central	939	1,441	0	2,380
529	Illinois Eastern	(573)	(662)	(0)	(1,235)
04	Frontier	218	250	0	468
01	Lincoln Trail	103	143	0	246
02	Olney Central	158	167	0	325
03	Wabash Valley	94	102	0	196
513	Illinois Valley	365	646	38	1,049
530	John A. Logan	334	505	17	856
539	John Wood	163	211	4	378
525	Joliet Junior	2,560	3,011	0	5,571
520	Kankakee	316	311	5	632
501	Kaskaskia	1,202	1,379	71	2,652
523	Kishwaukee	382	414	16	812
517	Lake Land	708	760	6	1,474
536	Lewis and Clark	954	1,002	4	1,960
526	Lincoln Land	955	1,091	2	2,048
528	McHenry County	1,918	2,429	0	4,347
524	Moraine Valley	2,708	1,884	3	4,595
527	Morton	647	493	0	1,140
535	Oakton	2,205	1,518	93	3,816
505	Parkland	601	644	11	1,256
515	Prairie State	332	288	10	630
521	Rend Lake	369	454	0	823
537	Richland	491	603	21	1,115
511	Rock Valley	620	909	22	1,551
506	Sauk Valley	367	403	1	771
531	Shawnee	192	304	1	497
510	South Suburban	1,672	1,682	1	3,355
533	Southeastern Illinois	387	377	3	767
522	Southwestern Illinois	2,261	2,396	140	4,797
534	Spoon River	120	262	0	382
504	Triton	1,885	1,476	17	3,378
516	Waubonsee	<u>1,852</u>	<u>2,185</u>	<u>0</u>	<u>4,037</u>
TOTALS		43,192	47,118	707	91,017

*Gender classifications align with U.S. Department of Education collection and reporting standards.
SOURCE OF DATA: ICCB Centralized Data System--Annual Enrollment and Completion (A1) Data



Illinois Community College Board
Table A-4
DUAL CREDIT HEADCOUNT ENROLLMENT BY ETHNIC ORIGIN* AND BY COLLEGE
FISCAL YEAR 2024

Dist. No. District/College	Asian	Native American	African American Non-Latino	Latino	White Non-Latino	U.S. Non- Resident	Pacific Islander	Middle Eastern or North African	Two or More Races	All Other or No Indication	Total
503 Black Hawk	25	1	70	185	967	0	0	0	47	69	1,364
518 Carl Sandburg	6	1	13	40	579	0	1	0	16	12	668
508 City Colleges of Chicago	(266)	(14)	(2,306)	(3,156)	(494)	(31)	(3)	(0)	(227)	(1)	(6,498)
02 Harold Washington	20	4	658	240	33	11	0	0	53	0	1,019
04 Harry S Truman	80	0	169	405	122	6	0	0	32	1	815
01 Kennedy-King	7	2	460	357	12	3	0	0	26	0	867
03 Malcolm X	20	2	314	245	27	1	0	0	31	0	640
05 Olive-Harvey	6	2	410	239	10	0	1	0	26	0	694
06 Richard J. Daley	34	2	172	999	64	3	0	0	26	0	1,300
07 Wilbur Wright	99	2	123	671	226	7	2	0	33	0	1,163
502 College of DuPage	1,035	29	495	2,327	4,335	3	11	0	371	219	8,825
532 College of Lake County	206	6	206	1,398	1,649	10	5	0	157	158	3,795
507 Danville Area	4	1	87	38	548	1	2	0	26	45	752
509 Elgin	209	5	76	861	764	12	1	0	99	8	2,035
512 Harper	1,127	16	200	1,453	2,169	0	178	16	330	39	5,528
540 Heartland	77	1	103	180	1,607	1	0	0	104	36	2,109
519 Highland	9	6	28	101	952	0	2	0	20	21	1,139
514 Illinois Central	70	1	108	139	1,900	12	0	0	150	0	2,380
529 Illinois Eastern	(8)	(5)	(11)	(15)	(1,175)	(0)	(2)	(0)	(12)	(7)	(1,235)
04 Frontier	2	1	2	7	451	0	0	0	5	0	468
01 Lincoln Trail	1	0	4	1	237	0	2	0	1	0	246
02 Olney Central	2	2	4	6	299	0	0	0	5	7	325
03 Wabash Valley	3	2	1	1	188	0	0	0	1	0	196
513 Illinois Valley	16	2	12	169	772	1	2	0	12	63	1,049
530 John A. Logan	19	5	54	39	614	2	0	0	46	77	856
539 John Wood	9	0	5	3	347	0	2	0	7	5	378
525 Joliet Junior	235	37	450	1,299	3,130	0	6	0	130	284	5,571
520 Kankakee	5	1	48	114	427	0	1	0	27	9	632
501 Kaskaskia	18	5	39	49	2,298	0	0	0	101	142	2,652
523 Kishwaukee	13	1	37	197	487	0	0	0	31	46	812
517 Lake Land	9	3	9	45	1,341	0	0	0	44	23	1,474
536 Lewis and Clark	41	6	97	71	1,595	0	4	0	23	123	1,960
526 Lincoln Land	47	38	127	113	1,618	0	1	0	66	38	2,048
528 McHenry County	138	16	80	1,071	2,854	16	1	0	124	47	4,347
524 Moraine Valley	198	16	549	1,228	1,972	0	0	31	141	460	4,595
527 Morton	1	0	3	760	1	0	0	0	0	375	1,140
535 Oakton	791	16	121	567	1,926	20	9	0	191	175	3,816
505 Parkland	56	2	70	113	918	2	0	0	85	10	1,256
515 Prairie State	5	2	274	92	174	0	1	0	50	32	630
521 Rend Lake	4	5	25	22	742	0	3	0	20	2	823
537 Richland	17	9	205	65	762	0	3	0	39	15	1,115
511 Rock Valley	60	4	109	346	922	0	2	0	58	50	1,551
506 Sauk Valley	4	2	6	60	487	0	1	0	21	190	771
531 Shawnee	10	10	54	30	356	0	0	0	1	36	497
510 South Suburban	34	30	1,527	1,004	542	0	3	0	42	173	3,355
533 Southeastern Illinois	5	1	20	16	690	0	0	0	27	8	767
522 Southwestern Illinois	45	12	674	342	3,181	3	3	0	295	242	4,797
534 Spoon River	3	3	11	10	350	0	0	0	5	0	382
504 Triton	152	7	159	1,472	1,323	22	0	0	116	127	3,378
516 Waubensee	<u>260</u>	<u>12</u>	<u>219</u>	<u>1,090</u>	<u>2,193</u>	<u>0</u>	<u>14</u>	<u>0</u>	<u>58</u>	<u>191</u>	<u>4,037</u>
TOTALS	5,237	331	8,687	20,280	49,161	136	261	47	3,319	3,558	91,017

*Race/ethnicity classifications align with State of Illinois collection and reporting standards per P.A. 103-0414.
SOURCE OF DATA: ICCB Centralized Data System--Annual Enrollment and Completion (A1) Data



Illinois Community College Board
Table A-5
DUAL CREDIT HEADCOUNT ENROLLMENT
BY NUMBER OF ENROLLED HOURS AND BY COLLEGE
FISCAL YEAR 2024

Dist.	No. District/College	>0-3.99	4-6.99	7-9.99	10-12.99	13 or More	Total
503	Black Hawk	323	362	252	189	238	1,364
518	Carl Sandburg	147	183	101	97	140	668
508	City Colleges of Chicago	(1,447)	(3,058)	(895)	(581)	(517)	(6,498)
02	Harold Washington	185	553	108	73	100	1,019
04	Harry S Truman	222	410	122	42	19	815
01	Kennedy-King	327	299	110	75	56	867
03	Malcolm X	215	264	70	44	47	640
05	Olive-Harvey	132	298	130	68	66	694
06	Richard J. Daley	153	552	225	171	199	1,300
07	Wilbur Wright	213	682	130	108	30	1,163
502	College of DuPage	5,645	2,212	459	267	242	8,825
532	College of Lake County	1,669	1,187	755	122	62	3,795
507	Danville Area	100	264	130	92	166	752
509	Elgin	597	590	310	114	424	2,035
512	Harper	1,794	2,400	793	343	198	5,528
540	Heartland	760	508	351	227	263	2,109
519	Highland	589	292	173	70	15	1,139
514	Illinois Central	471	747	460	318	384	2,380
529	Illinois Eastern	(171)	(249)	(182)	(185)	(448)	(1,235)
04	Frontier	74	101	57	48	188	468
01	Lincoln Trail	21	29	55	49	92	246
02	Olney Central	24	70	47	60	124	325
03	Wabash Valley	52	49	23	28	44	196
513	Illinois Valley	320	318	157	93	161	1,049
530	John A. Logan	373	257	143	61	22	856
539	John Wood	125	134	61	35	23	378
525	Joliet Junior	2,196	2,109	661	409	196	5,571
520	Kankakee	100	306	208	17	1	632
501	Kaskaskia	816	714	421	277	424	2,652
523	Kishwaukee	165	346	148	67	86	812
517	Lake Land	294	434	237	197	312	1,474
536	Lewis and Clark	522	470	315	261	392	1,960
526	Lincoln Land	676	735	316	197	124	2,048
528	McHenry County	1,199	910	775	473	990	4,347
524	Moraine Valley	3,099	1,037	365	70	24	4,595
527	Morton	647	226	214	49	4	1,140
535	Oakton	1,482	1,771	390	112	61	3,816
505	Parkland	253	407	196	171	229	1,256
515	Prairie State	437	144	46	3	0	630
521	Rend Lake	205	173	139	122	184	823
537	Richland	355	352	83	153	172	1,115
511	Rock Valley	735	288	140	47	341	1,551
506	Sauk Valley	268	194	168	84	57	771
531	Shawnee	100	116	88	51	142	497
510	South Suburban	2,510	658	110	17	60	3,355
533	Southeastern Illinois	278	137	95	103	154	767
522	Southwestern Illinois	2,346	1,340	607	223	281	4,797
534	Spoon River	87	103	90	39	63	382
504	Triton	1,571	1,082	432	204	89	3,378
516	Waubensee	<u>1,667</u>	<u>1,369</u>	<u>512</u>	<u>263</u>	<u>226</u>	<u>4,037</u>
TOTALS		36,539	28,182	11,978	6,403	7,915	91,017

SOURCE OF DATA: ICCB Centralized Data System--Annual Enrollment and Completion (A1) Data



Illinois Community College Board
Table B-1
DUAL CREDIT COURSE COUNT BY COLLEGE
FOR FISCAL YEARS 2020-2024

Dist. No. District/College	2020	2021	2022	2023	2024	FY 2022-2024	FY 2023-2024	FY 2020-2024		
						3-Year Average Number	1-Year Difference Number Percent	5-Year Difference Number Percent		
503 Black Hawk	371	464	423	410	416	416	6	1.5%	45	12.1%
518 Carl Sandburg	410	412	437	420	405	421	-15	-3.6%	-5	-1.2%
508 City Colleges of Chicago	(655)	(726)	(903)	(1,126)	(1,459)	(1,163)	(333)	(29.6%)	(804)	(122.7%)
02 Harold Washington	125	137	192	227	246	222	19	8.4%	121	96.8%
04 Harry S Truman	61	74	81	120	144	115	24	20.0%	83	136.1%
01 Kennedy-King	70	75	117	159	249	175	90	56.6%	179	255.7%
03 Malcolm X	92	116	118	172	200	163	28	16.3%	108	117.4%
05 Olive-Harvey	69	80	96	115	185	132	70	60.9%	116	168.1%
06 Richard J. Daley	134	134	155	185	252	197	67	36.2%	118	88.1%
07 Wilbur Wright	104	110	144	148	183	158	35	23.6%	79	76.0%
502 College of DuPage	447	508	541	671	844	685	173	25.8%	397	88.8%
532 College of Lake County	224	235	281	336	351	323	15	4.5%	127	56.7%
507 Danville Area	505	481	463	498	458	473	-40	-8.0%	-47	-9.3%
509 Elgin	448	540	659	744	806	736	62	8.3%	358	79.9%
512 Harper	408	457	468	493	500	487	7	1.4%	92	22.5%
540 Heartland	339	403	379	492	489	453	-3	-0.6%	150	44.2%
519 Highland	137	145	172	147	179	166	32	21.8%	42	30.7%
514 Illinois Central	288	307	340	333	365	346	32	9.6%	77	26.7%
529 Illinois Eastern	(573)	(643)	(480)	(708)	(694)	(627)	(-14)	(-2.0%)	(121)	(21.1%)
04 Frontier	228	270	142	230	259	210	29	12.6%	31	13.6%
01 Lincoln Trail	152	160	99	180	161	147	-19	-10.6%	9	5.9%
02 Olney Central	108	97	136	156	154	149	-2	-1.3%	46	42.6%
03 Wabash Valley	85	116	103	142	120	122	-22	-15.5%	35	41.2%
513 Illinois Valley	166	141	133	136	156	142	20	14.7%	-10	-6.0%
530 John A. Logan	149	152	150	153	161	155	8	5.2%	12	8.1%
539 John Wood	78	194	72	98	96	89	-2	-2.0%	18	23.1%
525 Joliet Junior	433	448	510	460	584	518	124	27.0%	151	34.9%
520 Kankakee	49	57	51	54	42	49	-12	-22.2%	-7	-14.3%
501 Kaskaskia	348	276	309	324	319	317	-5	-1.5%	-29	-8.3%
523 Kishwaukee	113	123	117	118	125	120	7	5.9%	12	10.6%
517 Lake Land	344	301	329	326	344	333	18	5.5%	0	0.0%
536 Lewis and Clark	540	417	308	332	372	337	40	12.0%	-168	-31.1%
526 Lincoln Land	198	228	236	251	316	268	65	25.9%	118	59.6%
528 McHenry County	186	293	416	543	574	511	31	5.7%	388	208.6%
524 Moraine Valley	331	353	398	414	423	412	9	2.2%	92	27.8%
527 Morton	91	71	86	125	138	116	13	10.4%	47	51.6%
535 Oakton	225	219	252	274	297	274	23	8.4%	72	32.0%
505 Parkland	286	381	296	292	378	322	86	29.5%	92	32.2%
515 Prairie State	82	59	51	53	55	53	2	3.8%	-27	-32.9%
521 Rend Lake	180	150	173	157	170	167	13	8.3%	-10	-5.6%
537 Richland	280	277	301	306	357	321	51	16.7%	77	27.5%
511 Rock Valley	684	831	749	655	857	754	202	30.8%	173	25.3%
506 Sauk Valley	340	335	288	315	324	309	9	2.9%	-16	-4.7%
531 Shawnee	69	77	71	144	195	137	51	35.4%	126	182.6%
510 South Suburban	212	203	300	319	304	308	-15	-4.7%	92	43.4%
533 Southeastern Illinois	249	241	215	218	247	227	29	13.3%	-2	-0.8%
522 Southwestern Illinois	1,120	1,128	1,090	1,157	1,156	1,134	-1	-0.1%	36	3.2%
534 Spoon River	157	155	162	185	218	188	33	17.8%	61	38.9%
504 Triton	339	359	378	196	384	319	188	95.9%	45	13.3%
516 Waubonsee	515	524	556	655	730	647	75	11.5%	215	41.7%
TOTALS	12,569	13,314	13,543	14,638	16,288	14,823	1,650	11.3%	3,719	29.6%
Pure										
Minimum	49	57	51	53	42	49	-40	-22.2%	-168	-32.9%
Maximum	1,120	1,128	1,090	1,157	1,156	1,134	202	95.9%	397	255.7%
Median	218	232	244	241	301	271	22	8.4%	67	29.2%
Standard Deviation	198	208	206	214	230	215	51	20.2%	105	61.0%
Average	262	277	282	305	339	309	34	13.0%	77	44.9%

SOURCE OF DATA: ICCB Centralized Data System--Annual Course (AC) Data



Illinois Community College Board
Table B-2
DUAL CREDIT COURSE ENROLLMENT BY COLLEGE
FOR FISCAL YEARS 2020-2024

Dist. No. District/College	2020	2021	2022	2023	2024	FY 2022-2024	FY 2023-2024	FY 2020-2024		
						3-Year Average Number	1-Year Difference Number Percent	5-Year Difference Number Percent		
503 Black Hawk	3,245	3,265	3,117	3,467	3,567	3,384	100	2.9%	322	9.9%
518 Carl Sandburg	2,207	2,244	2,307	2,194	2,295	2,265	101	4.6%	88	4.0%
508 City Colleges of Chicago	(7,629)	(6,555)	(8,744)	(11,183)	(12,829)	(10,919)	(1,646)	(14.7%)	(5,200)	(68.2%)
02 Harold Washington	1,455	1,360	1,971	2,276	2,244	2,164	-32	-1.4%	789	54.2%
04 Harry S Truman	404	512	483	862	1,353	899	491	57.0%	949	234.9%
01 Kennedy-King	516	340	560	1,086	1,609	1,085	523	48.2%	1,093	211.8%
03 Malcolm X	653	529	722	1,122	1,076	973	-46	-4.1%	423	64.8%
05 Olive-Harvey	842	636	828	1,050	1,474	1,117	424	40.4%	632	75.1%
06 Richard J. Daley	1,934	1,516	2,170	2,597	3,089	2,619	492	18.9%	1,155	59.7%
07 Wilbur Wright	1,825	1,662	2,010	2,190	1,984	2,061	-206	-9.4%	159	8.7%
502 College of DuPage	7,838	6,982	8,065	10,992	13,363	10,807	2,371	21.6%	5,525	70.5%
532 College of Lake County	2,618	2,175	3,088	4,487	5,451	4,342	964	21.5%	2,833	108.2%
507 Danville Area	2,777	2,127	2,263	2,629	2,375	2,422	-254	-9.7%	-402	-14.5%
509 Elgin	2,509	3,217	3,755	4,732	5,220	4,569	488	10.3%	2,711	108.1%
512 Harper	6,545	7,563	7,729	8,382	8,969	8,360	587	7.0%	2,424	37.0%
540 Heartland	3,044	4,055	3,860	4,303	4,572	4,245	269	6.3%	1,528	50.2%
519 Highland	1,578	1,261	1,823	1,514	1,864	1,734	350	23.1%	286	18.1%
514 Illinois Central	5,587	5,414	6,130	5,787	6,511	6,143	724	12.5%	924	16.5%
529 Illinois Eastern	(4,333)	(4,529)	(3,785)	(4,160)	(4,444)	(4,130)	(284)	(6.8%)	(111)	(2.6%)
04 Frontier	2,103	2,278	1,159	1,388	1,749	1,432	361	26.0%	-354	-16.8%
01 Lincoln Trail	780	960	686	948	867	834	-81	-8.5%	87	11.2%
02 Olney Central	831	697	1,191	1,045	1,245	1,160	200	19.1%	414	49.8%
03 Wabash Valley	619	594	749	779	583	704	-196	-25.2%	-36	-5.8%
513 Illinois Valley	1,574	1,331	1,513	1,590	1,812	1,638	222	14.0%	238	15.1%
530 John A. Logan	2,457	2,567	2,531	2,442	2,237	2,403	-205	-8.4%	-220	-9.0%
539 John Wood	492	714	478	734	786	666	52	7.1%	294	59.8%
525 Joliet Junior	7,638	7,063	8,185	8,089	9,815	8,696	1,726	21.3%	2,177	28.5%
520 Kankakee	865	944	936	1,010	1,022	989	12	1.2%	157	18.2%
501 Kaskaskia	5,088	4,953	5,944	6,459	6,713	6,372	254	3.9%	1,625	31.9%
523 Kishwaukee	1,431	1,511	1,471	1,502	1,870	1,614	368	24.5%	439	30.7%
517 Lake Land	3,800	3,693	3,748	3,701	3,743	3,731	42	1.1%	-57	-1.5%
536 Lewis and Clark	8,656	5,909	4,321	4,158	4,780	4,420	622	15.0%	-3,876	-44.8%
526 Lincoln Land	2,944	2,855	2,788	3,325	3,747	3,287	422	12.7%	803	27.3%
528 McHenry County	3,613	6,076	9,069	11,995	12,020	11,028	25	0.2%	8,407	232.7%
524 Moraine Valley	4,829	4,278	5,618	5,780	6,294	5,897	514	8.9%	1,465	30.3%
527 Morton	1,260	786	1,259	1,573	1,802	1,545	229	14.6%	542	43.0%
535 Oakton	3,259	3,160	3,684	4,419	4,820	4,308	401	9.1%	1,561	47.9%
505 Parkland	2,155	2,415	2,303	2,607	3,265	2,725	658	25.2%	1,110	51.5%
515 Prairie State	748	527	717	635	836	729	201	31.7%	88	11.8%
521 Rend Lake	2,618	2,442	2,442	2,229	2,508	2,393	279	12.5%	-110	-4.2%
537 Richland	2,167	1,845	2,160	2,353	2,818	2,444	465	19.8%	651	30.0%
511 Rock Valley	2,831	3,660	3,514	2,506	5,001	3,674	2,495	99.6%	2,170	76.7%
506 Sauk Valley	1,811	1,679	1,566	1,608	1,709	1,628	101	6.3%	-102	-5.6%
531 Shawnee	1,007	1,136	934	1,467	1,595	1,332	128	8.7%	588	58.4%
510 South Suburban	3,377	2,658	4,208	4,352	4,277	4,279	-75	-1.7%	900	26.7%
533 Southeastern Illinois	1,678	1,551	1,462	1,952	1,951	1,788	-1	-0.1%	273	16.3%
522 Southwestern Illinois	7,911	6,809	8,865	10,009	10,124	9,666	115	1.1%	2,213	28.0%
534 Spoon River	909	901	959	1,211	1,146	1,105	-65	-5.4%	237	26.1%
504 Triton	3,084	4,323	4,434	4,284	5,981	4,900	1,697	39.6%	2,897	93.9%
516 Waubonsee	5,282	5,770	6,616	7,463	7,961	7,347	498	6.7%	2,679	50.7%
TOTALS	133,394	130,943	146,391	163,283	182,093	163,922	18,810	11.5%	48,699	36.5%
Pure										
Minimum	404	340	478	635	583	666	-254	-25.2%	-3,876	-44.8%
Maximum	8,656	7,563	9,069	11,995	13,363	11,028	2,495	99.6%	8,407	234.9%
Median	2,187	2,210	2,283	2,398	2,442	2,413	262	9.0%	610	30.2%
Standard Deviation	2,145	2,047	2,418	2,805	3,077	2,746	588	20.1%	1,714	57.3%
Average	2,779	2,728	3,050	3,402	3,794	3,415	392	13.1%	1,015	44.3%

SOURCE OF DATA: ICCB Centralized Data System--Annual Course (AC) Data



Illinois Community College Board
 Table B-3
 AVERAGE DUAL CREDIT CLASS SIZE BY COLLEGE
 FOR FISCAL YEARS 2020-2024

Dist. No. District/College	2020	2021	2022	2023	2024	FY 2022-2024	FY 2023-2024		FY 2020-2024	
						3-Year Average Number	1-Year Difference Number	Percent	5-Year Difference Number	Percent
503 Black Hawk	8.7	7.0	7.4	8.5	8.6	8.1	0.1	1.4%	-0.2	-2.0%
518 Carl Sandburg	5.4	5.4	5.3	5.2	5.7	5.4	0.4	8.5%	0.3	5.3%
508 City Colleges of Chicago	(11.6)	(9.0)	(9.7)	(9.9)	(8.8)	(9.5)	(-1.1)	(-11.5%)	(-2.9)	(-24.5%)
02 Harold Washington	11.6	9.9	10.3	10.0	9.1	9.8	-0.9	-9.0%	-2.5	-21.6%
04 Harry S Truman	6.6	6.9	6.0	7.2	9.4	7.5	2.2	30.8%	2.8	41.9%
01 Kennedy-King	7.4	4.5	4.8	6.8	6.5	6.0	-0.4	-5.4%	-0.9	-12.3%
03 Malcolm X	7.1	4.6	6.1	6.5	5.4	6.0	-1.1	-17.5%	-1.7	-24.2%
05 Olive-Harvey	12.2	8.0	8.6	9.1	8.0	8.6	-1.2	-12.7%	-4.2	-34.7%
06 Richard J. Daley	14.4	11.3	14.0	14.0	12.3	13.4	-1.8	-12.7%	-2.2	-15.1%
07 Wilbur Wright	17.5	15.1	14.0	14.8	10.8	13.2	-4.0	-26.7%	-6.7	-38.2%
502 College of DuPage	17.5	13.7	14.9	16.4	15.8	15.7	-0.5	-3.3%	-1.7	-9.7%
532 College of Lake County	11.7	9.3	11.0	13.4	15.5	13.3	2.2	16.3%	3.8	32.9%
507 Danville Area	5.5	4.4	4.9	5.3	5.2	5.1	-0.1	-1.8%	-0.3	-5.7%
509 Elgin	5.6	6.0	5.7	6.4	6.5	6.2	0.1	1.8%	0.9	15.6%
512 Harper	16.0	16.5	16.5	17.0	17.9	17.2	0.9	5.5%	1.9	11.8%
540 Heartland	9.0	10.1	10.2	8.7	9.3	9.4	0.6	6.9%	0.4	4.1%
519 Highland	11.5	8.7	10.6	10.3	10.4	10.4	0.1	1.1%	-1.1	-9.6%
514 Illinois Central	19.4	17.6	18.0	17.4	17.8	17.7	0.5	2.6%	-1.6	-8.0%
529 Illinois Eastern	(7.6)	(7.0)	(7.9)	(5.9)	(6.4)	(6.7)	(0.5)	(9.0%)	(-1.2)	(-15.3%)
04 Frontier	9.2	8.4	8.2	6.0	6.8	7.0	0.7	11.9%	-2.5	-26.8%
01 Lincoln Trail	5.1	6.0	6.9	5.3	5.4	5.9	0.1	2.2%	0.3	4.9%
02 Olney Central	7.7	7.2	8.8	6.7	8.1	7.8	1.4	20.7%	0.4	5.1%
03 Wabash Valley	7.3	5.1	7.3	5.5	4.9	5.9	-0.6	-11.4%	-2.4	-33.3%
513 Illinois Valley	9.5	9.4	11.4	11.7	11.6	11.6	-0.1	-0.6%	2.1	22.5%
530 John A. Logan	16.5	16.9	16.9	16.0	13.9	15.6	-2.1	-12.9%	-2.6	-15.7%
539 John Wood	6.3	3.7	6.6	7.5	8.2	7.4	0.7	9.3%	1.9	29.8%
525 Joliet Junior	17.6	15.8	16.0	17.6	16.8	16.8	-0.8	-4.4%	-0.8	-4.7%
520 Kankakee	17.7	16.6	18.4	18.7	24.3	20.5	5.6	30.1%	6.7	37.8%
501 Kaskaskia	14.6	17.9	19.2	19.9	21.0	20.1	1.1	5.6%	6.4	43.9%
523 Kishwaukee	12.7	12.3	12.6	12.7	15.0	13.4	2.2	17.5%	2.3	18.1%
517 Lake Land	11.0	12.3	11.4	11.4	10.9	11.2	-0.5	-4.2%	-0.2	-1.5%
536 Lewis and Clark	16.0	14.2	14.0	12.5	12.8	13.1	0.3	2.6%	-3.2	-19.8%
526 Lincoln Land	14.9	12.5	11.8	13.2	11.9	12.3	-1.4	-10.5%	-3.0	-20.3%
528 McHenry County	19.4	20.7	21.8	22.1	20.9	21.6	-1.1	-5.2%	1.5	7.8%
524 Moraine Valley	14.6	12.1	14.1	14.0	14.9	14.3	0.9	6.6%	0.3	2.0%
527 Morton	13.8	11.1	14.6	12.6	13.1	13.4	0.5	3.8%	-0.8	-5.7%
535 Oakton	14.5	14.4	14.6	16.1	16.2	15.7	0.1	0.6%	1.7	12.0%
505 Parkland	7.5	6.3	7.8	8.9	8.6	8.4	-0.3	-3.3%	1.1	14.6%
515 Prairie State	9.1	8.9	14.1	12.0	15.2	13.7	3.2	26.9%	6.1	66.6%
521 Rend Lake	14.5	16.3	14.1	14.2	14.8	14.4	0.6	3.9%	0.2	1.4%
537 Richland	7.7	6.7	7.2	7.7	7.9	7.6	0.2	2.7%	0.2	2.0%
511 Rock Valley	4.1	4.4	4.7	3.8	5.8	4.8	2.0	52.5%	1.7	41.0%
506 Sauk Valley	5.3	5.0	5.4	5.1	5.3	5.3	0.2	3.3%	-0.1	-1.0%
531 Shawnee	14.6	14.8	13.2	10.2	8.2	10.5	-2.0	-19.7%	-6.4	-44.0%
510 South Suburban	15.9	13.1	14.0	13.6	14.1	13.9	0.4	3.1%	-1.9	-11.7%
533 Southeastern Illinois	6.7	6.4	6.8	9.0	7.9	7.9	-1.1	-11.8%	1.2	17.2%
522 Southwestern Illinois	7.1	6.0	8.1	8.7	8.8	8.5	0.1	1.2%	1.7	24.0%
534 Spoon River	5.8	5.8	5.9	6.5	5.3	5.9	-1.3	-19.7%	-0.5	-9.2%
504 Triton	9.1	12.0	11.7	21.9	15.6	16.4	-6.3	-28.7%	6.5	71.2%
516 Waubensee	10.3	11.0	11.9	11.4	10.9	11.4	-0.5	-4.3%	0.6	6.3%
TOTALS/AVERAGES	10.6	9.8	10.8	11.2	11.2	11.0	0.0	0.2%	0.6	5.3%
Pure										
Minimum	4.1	3.7	4.7	3.8	4.9	4.8	-6.3	-28.7%	-6.7	-44.0%
Maximum	19.4	20.7	21.8	22.1	24.3	21.6	5.6	52.5%	6.7	71.2%
Median	10.7	9.7	11.2	10.8	10.6	10.9	0.1	1.3%	0.2	1.7%
Standard Deviation	4.4	4.5	4.4	4.7	4.8	4.5	1.8	15.0%	2.9	25.2%
Average	11.1	10.3	11.0	11.2	11.2	11.2	0.0	1.1%	0.1	3.4%

SOURCE OF DATA: ICCB Centralized Data System--Annual Course (AC) Data



Illinois Community College Board
 Table B-4
 TOP TEN DUAL CREDIT COURSE ENROLLMENTS BY CIP (BASED ON FISCAL YEAR 2024)
 FOR FISCAL YEARS 2020-2024

CIP	COURSE NAME	2020	2021	2022	2023	2024	FY 2022-2024	FY 2023-2024	FY 2020-2024		
							3-Year Average	1-Year Difference	5-Year Difference	Number	Percent
23.1301	Writing, General	20,961	21,259	22,122	26,363	30,125	26,203	3,762	14.3%	9,164	43.7%
27.0101	Mathematics, General	7,900	8,643	8,267	8,706	8,743	8,572	37	0.4%	843	10.7%
16.0905	Spanish Language and Literature	5,344	4,994	6,403	6,748	7,226	6,792	478	7.1%	1,882	35.2%
23.1304	Rhetoric and Composition	4,746	5,537	5,553	5,805	6,568	5,975	763	13.1%	1,822	38.4%
54.0102	American History (United States)	4,032	4,138	4,384	5,554	6,340	5,426	786	14.2%	2,308	57.2%
31.0501	Sports, Kinesiology, and Physical Education/Fitness, General	2,142	2,999	3,761	4,874	5,489	4,708	615	12.6%	3,347	156.3%
27.0501	Statistics, General	2,952	3,214	3,648	4,282	4,998	4,309	716	16.7%	2,046	69.3%
48.0508	Welding Technology/Welder	3,047	2,381	3,198	4,263	4,721	4,061	458	10.7%	1,674	54.9%
42.0101	Psychology, General	3,467	3,547	3,806	4,336	4,680	4,274	344	7.9%	1,213	35.0%
51.3902	Nursing Assistant/Aide and Patient Care Assistant/Aide	<u>2,878</u>	<u>2,695</u>	<u>3,151</u>	<u>3,390</u>	<u>3,943</u>	<u>3,495</u>	<u>553</u>	<u>16.3%</u>	<u>1,065</u>	<u>37.0%</u>
	Totals	57,469	59,407	64,293	74,321	82,833	73,816	8,512	11.5%	25,364	44.1%
	Grand Total	133,394	130,943	146,391	163,283	182,093	163,922	18,810	11.5%	48,699	36.5%
	Percent Top Ten of Grand Total	43.1%	45.4%	43.9%	45.5%	45.5%	45.0%	0.0%	-0.1%	2.4%	5.6%

SOURCE OF DATA: ICCB Centralized Data System--Annual Course (AC) Data



Illinois Community College Board
Table B-5
DUAL CREDIT COURSE COUNT BY COLLEGE
IN TRANSFER EDUCATION
FOR FISCAL YEARS 2020-2024

Dist. No. District/College	2020	2021	2022	2023	2024	FY 2022-2024	FY 2023-2024	FY 2020-2024		
						3-Year Average Number	1-Year Difference Number Percent	5-Year Difference Number Percent		
503 Black Hawk	247	335	287	281	314	294	33	11.7%	67	27.1%
518 Carl Sandburg	341	351	381	371	352	368	-19	-5.1%	11	3.2%
508 City Colleges of Chicago	(518)	(526)	(669)	(894)	(1,150)	(904)	(256)	(28.6%)	(632)	(122.0%)
02 Harold Washington	93	88	139	184	199	174	15	8.2%	106	114.0%
04 Harry S Truman	54	56	70	106	109	95	3	2.8%	55	101.9%
01 Kennedy-King	53	51	73	107	173	118	66	61.7%	120	226.4%
03 Malcolm X	68	82	80	133	164	126	31	23.3%	96	141.2%
05 Olive-Harvey	51	51	64	89	143	99	54	60.7%	92	180.4%
06 Richard J. Daley	105	101	120	146	207	158	61	41.8%	102	97.1%
07 Wilbur Wright	94	97	123	129	155	136	26	20.2%	61	64.9%
502 College of DuPage	94	109	105	204	293	201	89	43.6%	199	211.7%
532 College of Lake County	73	97	103	134	159	132	25	18.7%	86	117.8%
507 Danville Area	355	325	294	324	310	309	-14	-4.3%	-45	-12.7%
509 Elgin	400	480	595	660	674	643	14	2.1%	274	68.5%
512 Harper	180	233	218	241	254	238	13	5.4%	74	41.1%
540 Heartland	243	292	274	378	393	348	15	4.0%	150	61.7%
519 Highland	35	37	39	39	37	38	-2	-5.1%	2	5.7%
514 Illinois Central	196	210	227	234	258	240	24	10.3%	62	31.6%
529 Illinois Eastern	(346)	(421)	(271)	(436)	(433)	(380)	(-3)	(-0.7%)	(87)	(25.1%)
04 Frontier	128	163	68	137	156	120	19	13.9%	28	21.9%
01 Lincoln Trail	112	135	79	131	121	110	-10	-7.6%	9	8.0%
02 Olney Central	70	65	84	97	92	91	-5	-5.2%	22	31.4%
03 Wabash Valley	36	58	40	71	64	58	-7	-9.9%	28	77.8%
513 Illinois Valley	108	90	94	96	107	99	11	11.5%	-1	-0.9%
530 John A. Logan	106	95	111	113	116	113	3	2.7%	10	9.4%
539 John Wood	60	149	51	69	62	61	-7	-10.1%	2	3.3%
525 Joliet Junior	226	245	261	216	323	267	107	49.5%	97	42.9%
520 Kankakee	27	35	32	33	23	29	-10	-30.3%	-4	-14.8%
501 Kaskaskia	154	120	136	129	146	137	17	13.2%	-8	-5.2%
523 Kishwaukee	47	65	60	65	72	66	7	10.8%	25	53.2%
517 Lake Land	191	182	186	187	207	193	20	10.7%	16	8.4%
536 Lewis and Clark	314	255	237	238	290	255	52	21.8%	-24	-7.6%
526 Lincoln Land	153	150	150	158	190	166	32	20.3%	37	24.2%
528 McHenry County	84	180	293	422	462	392	40	9.5%	378	450.0%
524 Moraine Valley	34	72	70	85	85	80	0	0.0%	51	150.0%
527 Morton	63	56	53	58	53	55	-5	-8.6%	-10	-15.9%
535 Oakton	59	64	65	79	85	76	6	7.6%	26	44.1%
505 Parkland	223	295	221	228	296	248	68	29.8%	73	32.7%
515 Prairie State	1	3	0	0	7	2	7	--	6	600.0%
521 Rend Lake	114	111	111	112	113	112	1	0.9%	-1	-0.9%
537 Richland	194	209	233	230	268	244	38	16.5%	74	38.1%
511 Rock Valley	651	749	653	526	657	612	131	24.9%	6	0.9%
506 Sauk Valley	213	221	186	203	211	200	8	3.9%	-2	-0.9%
531 Shawnee	43	54	55	115	157	109	42	36.5%	114	265.1%
510 South Suburban	6	2	9	14	33	19	19	135.7%	27	450.0%
533 Southeastern Illinois	158	132	142	136	152	143	16	11.8%	-6	-3.8%
522 Southwestern Illinois	834	827	724	773	736	744	-37	-4.8%	-98	-11.8%
534 Spoon River	137	124	135	158	182	158	24	15.2%	45	32.8%
504 Triton	116	141	173	49	69	97	20	40.8%	-47	-40.5%
516 Waubensee	414	432	462	528	592	527	64	12.1%	178	43.0%
TOTALS	7,758	8,474	8,366	9,216	10,321	9,301	1,105	12.0%	2,563	33.0%
Pure										
Minimum	1	2	0	0	7	2	-37	-30.3%	-98	-40.5%
Maximum	834	827	724	773	736	744	131	135.7%	378	600.0%
Median	110	122	122	135	162	136	17	10.8%	28	32.8%
Standard Deviation	158	167	159	162	170	163	32	25.7%	82	130.2%
Average	162	177	174	192	215	194	23	15.4%	53	78.5%

SOURCE OF DATA: ICCB Centralized Data System--Annual Course (AC) Data



Illinois Community College Board
Table B-6
DUAL CREDIT COURSE ENROLLMENT BY COLLEGE
IN TRANSFER EDUCATION
FOR FISCAL YEARS 2020-2024

Dist. No. District/College	2020	2021	2022	2023	2024	FY 2022-2024	FY 2023-2024		FY 2020-2024	
						3-Year Average Number	1-Year Difference Number	Percent	5-Year Difference Number	Percent
503 Black Hawk	2,398	2,593	2,391	2,512	2,790	2,564	278	11.1%	392	16.3%
518 Carl Sandburg	1,854	1,842	1,889	1,800	1,881	1,857	81	4.5%	27	1.5%
508 City Colleges of Chicago	(6,288)	(5,017)	(6,787)	(9,085)	(10,061)	(8,644)	(976)	(10.7%)	(3,773)	(60.0%)
02 Harold Washington	933	722	1,344	1,669	1,653	1,555	-16	-1.0%	720	77.2%
04 Harry S Truman	381	420	454	745	935	711	190	25.5%	554	145.4%
01 Kennedy-King	394	251	300	699	976	658	277	39.6%	582	147.7%
03 Malcolm X	466	385	503	925	882	770	-43	-4.6%	416	89.3%
05 Olive-Harvey	706	490	613	842	1,165	873	323	38.4%	459	65.0%
06 Richard J. Daley	1,648	1,201	1,758	2,239	2,649	2,215	410	18.3%	1,001	60.7%
07 Wilbur Wright	1,760	1,548	1,815	1,966	1,801	1,861	-165	-8.4%	41	2.3%
502 College of DuPage	1,918	2,211	1,845	3,539	4,889	3,424	1,350	38.1%	2,971	154.9%
532 College of Lake County	1,044	1,307	1,429	2,250	2,698	2,126	448	19.9%	1,654	158.4%
507 Danville Area	1,645	1,333	1,355	1,557	1,412	1,441	-145	-9.3%	-233	-14.2%
509 Elgin	2,235	2,978	3,541	4,394	4,353	4,096	-41	-0.9%	2,118	94.8%
512 Harper	3,304	4,189	4,211	4,839	5,317	4,789	478	9.9%	2,013	60.9%
540 Heartland	2,291	3,437	3,131	3,568	3,815	3,505	247	6.9%	1,524	66.5%
519 Highland	487	439	492	427	474	464	47	11.0%	-13	-2.7%
514 Illinois Central	4,351	4,131	4,738	4,581	5,254	4,858	673	14.7%	903	20.8%
529 Illinois Eastern	(2,966)	(3,223)	(2,350)	(2,675)	(2,888)	(2,638)	(213)	(8.0%)	(-78)	(-2.6%)
04 Frontier	1,498	1,626	724	958	1,172	951	214	22.3%	-326	-21.8%
01 Lincoln Trail	643	826	513	691	624	609	-67	-9.7%	-19	-3.0%
02 Olney Central	522	494	861	767	868	832	101	13.2%	346	66.3%
03 Wabash Valley	303	277	252	259	224	245	-35	-13.5%	-79	-26.1%
513 Illinois Valley	1,141	1,061	1,283	1,282	1,403	1,323	121	9.4%	262	23.0%
530 John A. Logan	1,877	1,888	2,074	2,015	1,841	1,977	-174	-8.6%	-36	-1.9%
539 John Wood	404	569	394	620	633	549	13	2.1%	229	56.7%
525 Joliet Junior	4,664	4,546	4,644	4,420	6,165	5,076	1,745	39.5%	1,501	32.2%
520 Kankakee	457	548	518	515	440	491	-75	-14.6%	-17	-3.7%
501 Kaskaskia	2,660	2,608	3,005	3,067	3,437	3,170	370	12.1%	777	29.2%
523 Kishwaukee	752	968	912	995	1,327	1,078	332	33.4%	575	76.5%
517 Lake Land	2,559	2,625	2,450	2,407	2,471	2,443	64	2.7%	-88	-3.4%
536 Lewis and Clark	5,509	4,186	3,646	3,419	4,128	3,731	709	20.7%	-1,381	-25.1%
526 Lincoln Land	2,472	2,283	2,044	2,432	2,675	2,384	243	10.0%	203	8.2%
528 McHenry County	2,084	4,392	7,163	10,043	10,309	9,172	266	2.6%	8,225	394.7%
524 Moraine Valley	416	854	975	1,313	1,333	1,207	20	1.5%	917	220.4%
527 Morton	944	688	919	1,066	1,079	1,021	13	1.2%	135	14.3%
535 Oakton	862	963	1,002	1,399	1,497	1,299	98	7.0%	635	73.7%
505 Parkland	1,773	1,721	1,568	1,848	2,385	1,934	537	29.1%	612	34.5%
515 Prairie State	1	30	0	0	110	37	110	--	109	10900.0%
521 Rend Lake	2,015	2,085	1,951	1,793	1,937	1,894	144	8.0%	-78	-3.9%
537 Richland	1,338	1,177	1,530	1,616	1,868	1,671	252	15.6%	530	39.6%
511 Rock Valley	2,772	3,343	3,048	2,159	3,724	2,977	1,565	72.5%	952	34.3%
506 Sauk Valley	885	921	868	856	826	850	-30	-3.5%	-59	-6.7%
531 Shawnee	750	904	728	1,218	1,343	1,096	125	10.3%	593	79.1%
510 South Suburban	63	30	155	188	478	274	290	154.3%	415	658.7%
533 Southeastern Illinois	1,210	1,046	1,027	1,257	1,263	1,182	6	0.5%	53	4.4%
522 Southwestern Illinois	4,638	3,803	4,356	5,033	4,802	4,730	-231	-4.6%	164	3.5%
534 Spoon River	824	727	812	1,040	947	933	-93	-8.9%	123	14.9%
504 Triton	900	1,951	2,375	902	914	1,397	12	1.3%	14	1.6%
516 Waubensee	4,480	5,103	5,760	6,269	6,489	6,173	220	3.5%	2,009	44.8%
TOTALS	79,231	83,720	89,366	100,399	111,656	100,474	11,257	11.2%	32,425	40.9%
Pure										
Minimum	1	30	0	0	110	37	-231	-14.6%	-1,381	-26.1%
Maximum	5,509	5,103	7,163	10,043	10,309	9,172	1,745	154.3%	8,225	10900.0%
Median	1,274	1,254	1,392	1,587	1,575	1,498	123	8.0%	404	33.3%
Standard Deviation	1,317	1,360	1,566	1,838	1,996	1,796	402	26.7%	1,342	1568.4%
Average	1,651	1,744	1,862	2,092	2,326	2,093	235	13.3%	676	288.8%

SOURCE OF DATA: ICCB Centralized Data System--Annual Course (AC) Data



Illinois Community College Board
 Table B-7
 AVERAGE DUAL CREDIT CLASS SIZE BY COLLEGE
 IN TRANSFER EDUCATION
 FOR FISCAL YEARS 2020-2024

Dist. No. District/College	2020	2021	2022	2023	2024	FY 2022-2024	FY 2023-2024		FY 2020-2024	
						3-Year Average Number	1-Year Difference Number	Percent	5-Year Difference Number	Percent
503 Black Hawk	9.7	7.7	8.3	8.9	8.9	8.7	-0.1	-0.6%	-0.8	-8.5%
518 Carl Sandburg	5.4	5.2	5.0	4.9	5.3	5.1	0.5	10.1%	-0.1	-1.7%
508 City Colleges of Chicago	(12.1)	(9.5)	(10.1)	(10.2)	(8.7)	(9.7)	(-1.4)	(-13.9%)	(-3.4)	(-27.9%)
02 Harold Washington	10.0	8.2	9.7	9.1	8.3	9.0	-0.8	-8.4%	-1.7	-17.2%
04 Harry S Truman	7.1	7.5	6.5	7.0	8.6	7.4	1.5	22.0%	1.5	21.6%
01 Kennedy-King	7.4	4.9	4.1	6.5	5.6	5.4	-0.9	-13.6%	-1.8	-24.1%
03 Malcolm X	6.9	4.7	6.3	7.0	5.4	6.2	-1.6	-22.7%	-1.5	-21.5%
05 Olive-Harvey	13.8	9.6	9.6	9.5	8.1	9.1	-1.3	-13.9%	-5.7	-41.1%
06 Richard J. Daley	15.7	11.9	14.7	15.3	12.8	14.3	-2.5	-16.6%	-2.9	-18.5%
07 Wilbur Wright	18.7	16.0	14.8	15.2	11.6	13.9	-3.6	-23.8%	-7.1	-37.9%
502 College of DuPage	20.4	20.3	17.6	17.3	16.7	17.2	-0.7	-3.8%	-3.7	-18.2%
532 College of Lake County	14.3	13.5	13.9	16.8	17.0	15.9	0.2	1.1%	2.7	18.6%
507 Danville Area	4.6	4.1	4.6	4.8	4.6	4.7	-0.3	-5.2%	-0.1	-1.7%
509 Elgin	5.6	6.2	6.0	6.7	6.5	6.4	-0.2	-3.0%	0.9	15.6%
512 Harper	18.4	18.0	19.3	20.1	20.9	20.1	0.9	4.3%	2.6	14.0%
540 Heartland	9.4	11.8	11.4	9.4	9.7	10.2	0.3	2.8%	0.3	3.0%
519 Highland	13.9	11.9	12.6	10.9	12.8	12.1	1.9	17.0%	-1.1	-7.9%
514 Illinois Central	22.2	19.7	20.9	19.6	20.4	20.3	0.8	4.0%	-1.8	-8.3%
529 Illinois Eastern	(8.6)	(7.7)	(8.7)	(6.1)	(6.7)	(7.2)	(0.5)	(8.7%)	(-1.9)	(-22.2%)
04 Frontier	11.7	10.0	10.6	7.0	7.5	8.4	0.5	7.4%	-4.2	-35.8%
01 Lincoln Trail	5.7	6.1	6.5	5.3	5.2	5.6	-0.1	-2.2%	-0.6	-10.2%
02 Olney Central	7.5	7.6	10.3	7.9	9.4	9.2	1.5	19.3%	2.0	26.5%
03 Wabash Valley	8.4	4.8	6.3	3.6	3.5	4.5	-0.1	-4.1%	-4.9	-58.4%
513 Illinois Valley	10.6	11.8	13.6	13.4	13.1	13.4	-0.2	-1.8%	2.5	24.1%
530 John A. Logan	17.7	19.9	18.7	17.8	15.9	17.5	-2.0	-11.0%	-1.8	-10.4%
539 John Wood	6.7	3.8	7.7	9.0	10.2	9.0	1.2	13.6%	3.5	51.6%
525 Joliet Junior	20.6	18.6	17.8	20.5	19.1	19.1	-1.4	-6.7%	-1.6	-7.5%
520 Kankakee	16.9	15.7	16.2	15.6	19.1	17.0	3.5	22.6%	2.2	13.0%
501 Kaskaskia	17.3	21.7	22.1	23.8	23.5	23.1	-0.2	-1.0%	6.3	36.3%
523 Kishwaukee	16.0	14.9	15.2	15.3	18.4	16.3	3.1	20.4%	2.4	15.2%
517 Lake Land	13.4	14.4	13.2	12.9	11.9	12.7	-0.9	-7.3%	-1.5	-10.9%
536 Lewis and Clark	17.5	16.4	15.4	14.4	14.2	14.7	-0.1	-0.9%	-3.3	-18.9%
526 Lincoln Land	16.2	15.2	13.6	15.4	14.1	14.4	-1.3	-8.5%	-2.1	-12.9%
528 McHenry County	24.8	24.4	24.4	23.8	22.3	23.5	-1.5	-6.2%	-2.5	-10.1%
524 Moraine Valley	12.2	11.9	13.9	15.4	15.7	15.0	0.2	1.5%	3.4	28.2%
527 Morton	15.0	12.3	17.3	18.4	20.4	18.7	2.0	10.8%	5.4	35.9%
535 Oakton	14.6	15.0	15.4	17.7	17.6	16.9	-0.1	-0.5%	3.0	20.5%
505 Parkland	8.0	5.8	7.1	8.1	8.1	7.8	0.0	-0.6%	0.1	1.3%
515 Prairie State	1.0	10.0	--	--	15.7	15.7	--	--	14.7	1471.4%
521 Rend Lake	17.7	18.8	17.6	16.0	17.1	16.9	1.1	7.1%	-0.5	-3.0%
537 Richland	6.9	5.6	6.6	7.0	7.0	6.9	-0.1	-0.8%	0.1	1.1%
511 Rock Valley	4.3	4.5	4.7	4.1	5.7	4.8	1.6	38.1%	1.4	33.1%
506 Sauk Valley	4.2	4.2	4.7	4.2	3.9	4.3	-0.3	-7.2%	-0.2	-5.8%
531 Shawnee	17.4	16.7	13.2	10.6	8.6	10.8	-2.0	-19.2%	-8.9	-51.0%
510 South Suburban	10.5	15.0	17.2	13.4	14.5	15.0	1.1	7.9%	4.0	38.0%
533 Southeastern Illinois	7.7	7.9	7.2	9.2	8.3	8.3	-0.9	-10.1%	0.7	8.5%
522 Southwestern Illinois	5.6	4.6	6.0	6.5	6.5	6.4	0.0	0.2%	1.0	17.3%
534 Spoon River	6.0	5.9	6.0	6.6	5.2	5.9	-1.4	-20.9%	-0.8	-13.5%
504 Triton	7.8	13.8	13.7	18.4	13.2	15.1	-5.2	-28.0%	5.5	70.7%
516 Waubensee	10.8	11.8	12.5	11.9	11.0	11.8	-0.9	-7.7%	0.1	1.3%
TOTALS/AVERAGES	10.2	9.9	10.7	10.9	10.8	10.8	-0.1	-0.7%	0.6	5.9%
Pure										
Minimum	1.0	3.8	4.1	3.6	3.5	4.3	-5.2	-28.0%	-8.9	-58.4%
Maximum	24.8	24.4	24.4	23.8	23.5	23.5	3.5	38.1%	14.7	1471.4%
Median	10.7	11.8	12.6	10.9	11.3	11.9	-0.1	-1.0%	-0.1	-1.7%
Standard Deviation	5.6	5.5	5.3	5.5	5.5	5.4	1.5	13.1%	3.8	213.8%
Average	11.8	11.5	11.9	12.0	11.9	12.0	-0.2	-1.0%	0.1	31.5%

SOURCE OF DATA: ICCB Centralized Data System--Annual Course (AC) Data



Illinois Community College Board
 Table B-8
 TOP FIVE DUAL CREDIT COURSE ENROLLMENTS BY COLLEGE
 IN TRANSFER EDUCATION
 FISCAL YEAR 2024

Dist. No. District/College	23.1301 Writing, General	27.0101 Mathematics, General	16.0905 Spanish Language and Literature	23.1304 Rhetoric and Composition	54.0102 American History (United States)	Total
503 Black Hawk	889	304	141	262	182	1,778
518 Carl Sandburg	424	19	9	177	94	723
508 City Colleges of Chicago	(3,424)	(1,177)	(1,148)	(6)	(265)	(6,020)
02 Harold Washington	574	150	192	0	42	958
04 Harry S Truman	289	145	198	0	46	678
01 Kennedy-King	217	125	26	6	34	408
03 Malcolm X	96	46	124	0	0	266
05 Olive-Harvey	267	47	201	0	116	631
06 Richard J. Daley	1,279	313	248	0	26	1,866
07 Wilbur Wright	702	351	159	0	1	1,213
502 College of DuPage	1,590	0	411	160	0	2,161
532 College of Lake County	897	18	106	63	87	1,171
507 Danville Area	358	43	4	69	71	545
509 Elgin	1,480	313	158	135	274	2,360
512 Harper	641	628	837	934	0	3,040
540 Heartland	1,101	48	27	0	113	1,289
519 Highland	63	61	0	0	0	124
514 Illinois Central	1,814	67	0	448	248	2,577
529 Illinois Eastern	(650)	(296)	(98)	(218)	(295)	(1,557)
04 Frontier	260	149	3	83	160	655
01 Lincoln Trail	124	57	94	49	11	335
02 Olney Central	202	67	1	73	115	458
03 Wabash Valley	64	23	0	13	9	109
513 Illinois Valley	477	37	0	250	40	804
530 John A. Logan	612	55	156	106	0	929
539 John Wood	229	98	44	74	9	454
525 Joliet Junior	3,636	230	0	115	415	4,396
520 Kankakee	37	9	0	23	38	107
501 Kaskaskia	686	322	249	345	373	1,975
523 Kishwaukee	337	85	35	112	335	904
517 Lake Land	879	465	16	214	47	1,621
536 Lewis and Clark	973	430	662	83	602	2,750
526 Lincoln Land	538	275	176	222	464	1,675
528 McHenry County	1,267	87	2,347	866	1,167	5,734
524 Moraine Valley	393	200	0	11	0	604
527 Morton	0	459	0	0	0	459
535 Oakton	501	217	0	95	28	841
505 Parkland	1,058	27	2	61	126	1,274
515 Prairie State	0	0	0	0	0	0
521 Rend Lake	412	440	5	45	134	1,036
537 Richland	595	26	20	90	33	764
511 Rock Valley	531	291	75	204	260	1,361
506 Sauk Valley	268	34	1	43	6	352
531 Shawnee	289	140	25	32	136	622
510 South Suburban	231	0	0	0	13	244
533 Southeastern Illinois	213	97	12	59	29	410
522 Southwestern Illinois	1,078	247	123	618	263	2,329
534 Spoon River	251	84	0	112	11	458
504 Triton	14	191	0	0	0	205
516 Waubonsee	<u>1,209</u>	<u>1,223</u>	<u>339</u>	<u>290</u>	<u>182</u>	<u>3,243</u>
TOTALS	30,045	8,743	7,226	6,542	6,340	58,896
Grand Total	182,093	182,093	182,093	182,093	182,093	182,093
Percent Top Five of Grand Total	16.5%	4.8%	4.0%	3.6%	3.5%	32.3%

SOURCE OF DATA: ICCB Centralized Data System--Annual Course (AC) Data



Illinois Community College Board
Table B-9
DUAL CREDIT COURSE COUNT BY COLLEGE
IN CAREER AND TECHNICAL EDUCATION
FISCAL YEARS 2020-2024

Dist. No. District/College	2020	2021	2022	2023	2024	FY 2022-2024	FY 2023-2024	FY 2020-2024		
						3-Year Average Number	1-Year Difference Number Percent	5-Year Difference Number Percent		
503 Black Hawk	124	129	136	129	102	122	-27	-20.9%	-22	-17.7%
518 Carl Sandburg	69	61	56	49	53	53	4	8.2%	-16	-23.2%
508 City Colleges of Chicago	(137)	(200)	(234)	(232)	(309)	(258)	(77)	(33.2%)	(172)	(125.5%)
02 Harold Washington	32	49	53	43	47	48	4	9.3%	15	46.9%
04 Harry S Truman	7	18	11	14	35	20	21	150.0%	28	400.0%
01 Kennedy-King	17	24	44	52	76	57	24	46.2%	59	347.1%
03 Malcolm X	24	34	38	39	36	38	-3	-7.7%	12	50.0%
05 Olive-Harvey	18	29	32	26	42	33	16	61.5%	24	133.3%
06 Richard J. Daley	29	33	35	39	45	40	6	15.4%	16	55.2%
07 Wilbur Wright	10	13	21	19	28	23	9	47.4%	18	180.0%
502 College of DuPage	353	399	436	467	551	485	84	18.0%	198	56.1%
532 College of Lake County	151	138	178	202	192	191	-10	-5.0%	41	27.2%
507 Danville Area	150	156	169	174	148	164	-26	-14.9%	-2	-1.3%
509 Elgin	48	60	64	84	132	93	48	57.1%	84	175.0%
512 Harper	228	224	250	252	246	249	-6	-2.4%	18	7.9%
540 Heartland	96	111	105	114	96	105	-18	-15.8%	0	0.0%
519 Highland	102	108	133	108	142	128	34	31.5%	40	39.2%
514 Illinois Central	92	97	113	99	107	106	8	8.1%	15	16.3%
529 Illinois Eastern	(227)	(222)	(209)	(272)	(261)	(247)	(-11)	(-4.0%)	(34)	(15.0%)
04 Frontier	100	107	74	93	103	90	10	10.8%	3	3.0%
01 Lincoln Trail	40	25	20	49	40	36	-9	-18.4%	0	0.0%
02 Olney Central	38	32	52	59	62	58	3	5.1%	24	63.2%
03 Wabash Valley	49	58	63	71	56	63	-15	-21.1%	7	14.3%
513 Illinois Valley	58	51	39	40	49	43	9	22.5%	-9	-15.5%
530 John A. Logan	43	57	39	40	45	41	5	12.5%	2	4.7%
539 John Wood	18	45	21	29	34	28	5	17.2%	16	88.9%
525 Joliet Junior	207	203	249	244	261	251	17	7.0%	54	26.1%
520 Kankakee	22	22	19	21	19	20	-2	-9.5%	-3	-13.6%
501 Kaskaskia	194	156	173	195	173	180	-22	-11.3%	-21	-10.8%
523 Kishwaukee	66	58	57	53	53	54	0	0.0%	-13	-19.7%
517 Lake Land	153	119	143	139	137	140	-2	-1.4%	-16	-10.5%
536 Lewis and Clark	226	162	71	94	82	82	-12	-12.8%	-144	-63.7%
526 Lincoln Land	45	78	86	93	126	102	33	35.5%	81	180.0%
528 McHenry County	102	113	123	121	112	119	-9	-7.4%	10	9.8%
524 Moraine Valley	297	281	328	329	338	332	9	2.7%	41	13.8%
527 Morton	28	15	33	67	85	62	18	26.9%	57	203.6%
535 Oakton	166	155	187	195	212	198	17	8.7%	46	27.7%
505 Parkland	63	86	75	64	82	74	18	28.1%	19	30.2%
515 Prairie State	81	56	51	53	48	51	-5	-9.4%	-33	-40.7%
521 Rend Lake	66	39	62	45	57	55	12	26.7%	-9	-13.6%
537 Richland	86	68	68	76	89	78	13	17.1%	3	3.5%
511 Rock Valley	33	82	96	129	200	142	71	55.0%	167	506.1%
506 Sauk Valley	127	114	102	112	113	109	1	0.9%	-14	-11.0%
531 Shawnee	26	23	16	29	38	28	9	31.0%	12	46.2%
510 South Suburban	206	201	291	305	271	289	-34	-11.1%	65	31.6%
533 Southeastern Illinois	91	109	73	82	95	83	13	15.9%	4	4.4%
522 Southwestern Illinois	286	301	366	384	420	390	36	9.4%	134	46.9%
534 Spoon River	20	31	27	27	36	30	9	33.3%	16	80.0%
504 Triton	223	218	205	147	315	222	168	114.3%	92	41.3%
516 Waubensee	101	92	94	127	138	120	11	8.7%	37	36.6%
TOTALS	4,811	4,840	5,177	5,422	5,967	5,522	545	10.1%	1,156	24.0%
Pure										
Minimum	7	13	11	14	19	20	-34	-21.1%	-144	-63.7%
Maximum	353	399	436	467	551	485	168	150.0%	198	506.1%
Median	75	80	72	83	92	83	9	9.0%	16	26.6%
Standard Deviation	84	82	96	99	109	101	32	32.0%	53	111.5%
Average	100	101	108	113	124	115	11	16.1%	24	57.4%

SOURCE OF DATA: ICCB Centralized Data System--Annual Course (AC) Data



Illinois Community College Board
Table B-10
DUAL CREDIT COURSE ENROLLMENT BY COLLEGE
IN CAREER AND TECHNICAL EDUCATION
FISCAL YEARS 2020-2024

Dist. No. District/College	2020	2021	2022	2023	2024	FY 2022-2024	FY 2023-2024	FY 2020-2024		
						3-Year Average	1-Year Difference	5-Year Difference	Number	Percent
503 Black Hawk	847	672	726	955	777	819	-178	-18.6%	-70	-8.3%
518 Carl Sandburg	353	402	418	394	414	409	20	5.1%	61	17.3%
508 City Colleges of Chicago	(1,341)	(1,538)	(1,957)	(2,098)	(2,768)	(2,274)	(670)	(31.9%)	(1,427)	(106.4%)
02 Harold Washington	522	638	627	607	591	608	-16	-2.6%	69	13.2%
04 Harry S Truman	23	92	29	117	418	188	301	257.3%	395	1717.4%
01 Kennedy-King	122	89	260	387	633	427	246	63.6%	511	418.9%
03 Malcolm X	187	144	219	197	194	203	-3	-1.5%	7	3.7%
05 Olive-Harvey	136	146	215	208	309	244	101	48.6%	173	127.2%
06 Richard J. Daley	286	315	412	358	440	403	82	22.9%	154	53.8%
07 Wilbur Wright	65	114	195	224	183	201	-41	-18.3%	118	181.5%
502 College of DuPage	5,920	4,771	6,220	7,453	8,474	7,382	1,021	13.7%	2,554	43.1%
532 College of Lake County	1,574	868	1,659	2,237	2,753	2,216	516	23.1%	1,179	74.9%
507 Danville Area	1,132	794	908	1,072	963	981	-109	-10.2%	-169	-14.9%
509 Elgin	274	239	214	338	867	473	529	156.5%	593	216.4%
512 Harper	3,241	3,374	3,518	3,543	3,652	3,571	109	3.1%	411	12.7%
540 Heartland	753	618	729	735	757	740	22	3.0%	4	0.5%
519 Highland	1,091	822	1,331	1,087	1,390	1,269	303	27.9%	299	27.4%
514 Illinois Central	1,236	1,283	1,392	1,206	1,257	1,285	51	4.2%	21	1.7%
529 Illinois Eastern	(1,367)	(1,306)	(1,435)	(1,485)	(1,556)	(1,492)	(71)	(4.8%)	(189)	(13.8%)
04 Frontier	605	652	435	430	577	481	147	34.2%	-28	-4.6%
01 Lincoln Trail	137	134	173	257	243	224	-14	-5.4%	106	77.4%
02 Olney Central	309	203	330	278	377	328	99	35.6%	68	22.0%
03 Wabash Valley	316	317	497	520	359	459	-161	-31.0%	43	13.6%
513 Illinois Valley	433	270	230	308	409	316	101	32.8%	-24	-5.5%
530 John A. Logan	580	679	457	427	396	427	-31	-7.3%	-184	-31.7%
539 John Wood	88	145	84	114	153	117	39	34.2%	65	73.9%
525 Joliet Junior	2,974	2,517	3,541	3,669	3,650	3,620	-19	-0.5%	676	22.7%
520 Kankakee	408	396	418	495	582	498	87	17.6%	174	42.6%
501 Kaskaskia	2,428	2,345	2,939	3,392	3,276	3,202	-116	-3.4%	848	34.9%
523 Kishwaukee	679	543	559	507	543	536	36	7.1%	-136	-20.0%
517 Lake Land	1,241	1,068	1,298	1,294	1,272	1,288	-22	-1.7%	31	2.5%
536 Lewis and Clark	3,147	1,723	675	739	652	689	-87	-11.8%	-2,495	-79.3%
526 Lincoln Land	472	572	744	893	1,072	903	179	20.0%	600	127.1%
528 McHenry County	1,529	1,684	1,906	1,952	1,711	1,856	-241	-12.3%	182	11.9%
524 Moraine Valley	4,413	3,424	4,643	4,467	4,961	4,690	494	11.1%	548	12.4%
527 Morton	316	98	340	507	723	523	216	42.6%	407	128.8%
535 Oakton	2,397	2,197	2,682	3,020	3,323	3,008	303	10.0%	926	38.6%
505 Parkland	382	694	735	759	880	791	121	15.9%	498	130.4%
515 Prairie State	747	497	717	635	726	693	91	14.3%	-21	-2.8%
521 Rend Lake	603	357	491	436	571	499	135	31.0%	-32	-5.3%
537 Richland	829	668	630	737	950	772	213	28.9%	121	14.6%
511 Rock Valley	59	317	466	347	1,277	697	930	268.0%	1,218	2064.4%
506 Sauk Valley	926	758	698	752	883	778	131	17.4%	-43	-4.6%
531 Shawnee	257	232	206	249	252	236	3	1.2%	-5	-1.9%
510 South Suburban	3,314	2,628	4,053	4,164	3,799	4,005	-365	-8.8%	485	14.6%
533 Southeastern Illinois	468	505	435	695	688	606	-7	-1.0%	220	47.0%
522 Southwestern Illinois	3,273	3,006	4,509	4,976	5,322	4,936	346	7.0%	2,049	62.6%
534 Spoon River	85	174	147	171	199	172	28	16.4%	114	134.1%
504 Triton	2,184	2,372	2,059	3,382	5,067	3,503	1,685	49.8%	2,883	132.0%
516 Waubonsee	802	667	856	1,194	1,472	1,174	278	23.3%	670	83.5%
TOTALS	54,163	47,223	57,025	62,884	70,437	63,449	7,553	12.0%	16,274	30.0%
Pure										
Minimum	23	89	29	114	153	117	-365	-31.0%	-2,495	-79.3%
Maximum	5,920	4,771	6,220	7,453	8,474	7,382	1,685	268.0%	2,883	2064.4%
Median	604	628	629	665	742	691	89	12.4%	138	22.4%
Standard Deviation	1,280	1,067	1,405	1,564	1,716	1,565	336	57.0%	769	382.1%
Average	1,128	984	1,188	1,310	1,467	1,322	157	25.3%	339	125.5%

SOURCE OF DATA: ICCB Centralized Data System--Annual Course (AC) Data



Illinois Community College Board
 Table B-11
 AVERAGE DUAL CREDIT CLASS SIZE BY COLLEGE
 IN CAREER AND TECHNICAL EDUCATION
 FISCAL YEARS 2020-2024

Dist. No. District/College	2020	2021	2022	2023	2024	FY 2022-2024	FY 2023-2024		FY 2020-2024	
						3-Year Average Number	1-Year Difference Number	Percent	5-Year Difference Number	Percent
503 Black Hawk	6.8	5.2	5.3	7.4	7.6	6.8	0.2	2.9%	0.8	11.5%
518 Carl Sandburg	5.1	6.6	7.5	8.0	7.8	7.8	-0.2	-2.9%	2.7	52.7%
508 City Colleges of Chicago	(9.8)	(7.7)	(8.4)	(9.0)	(9.0)	(8.8)	(-0.1)	(-0.9%)	(-0.8)	(-8.5%)
02 Harold Washington	16.3	13.0	11.8	14.1	12.6	12.8	-1.5	-10.9%	-3.7	-22.9%
04 Harry S Truman	3.3	5.1	2.6	8.4	11.9	7.6	3.6	42.9%	8.7	263.5%
01 Kennedy-King	7.2	3.7	5.9	7.4	8.3	7.2	0.9	11.9%	1.2	16.1%
03 Malcolm X	7.8	4.2	5.8	5.1	5.4	5.4	0.3	6.7%	-2.4	-30.8%
05 Olive-Harvey	7.6	5.0	6.7	8.0	7.4	7.4	-0.6	-8.0%	-0.2	-2.6%
06 Richard J. Daley	9.9	9.5	11.8	9.2	9.8	10.2	0.6	6.5%	-0.1	-0.9%
07 Wilbur Wright	6.5	8.8	9.3	11.8	6.5	9.2	-5.3	-44.6%	0.0	0.5%
502 College of DuPage	16.8	12.0	14.3	16.0	15.4	15.2	-0.6	-3.6%	-1.4	-8.3%
532 College of Lake County	10.4	6.3	9.3	11.1	14.3	11.6	3.3	29.5%	3.9	37.6%
507 Danville Area	7.5	5.1	5.4	6.2	6.5	6.0	0.3	5.6%	-1.0	-13.8%
509 Elgin	5.7	4.0	3.3	4.0	6.6	4.6	2.5	63.2%	0.9	15.1%
512 Harper	14.2	15.1	14.1	14.1	14.8	14.3	0.8	5.6%	0.6	4.4%
540 Heartland	7.8	5.6	6.9	6.4	7.9	7.1	1.4	22.3%	0.0	0.5%
519 Highland	10.7	7.6	10.0	10.1	9.8	10.0	-0.3	-2.7%	-0.9	-8.5%
514 Illinois Central	13.4	13.2	12.3	12.2	11.7	12.1	-0.4	-3.6%	-1.7	-12.6%
529 Illinois Eastern	(6.0)	(5.9)	(6.9)	(5.5)	(6.0)	(6.1)	(0.5)	(9.2%)	(-0.1)	(-1.0%)
04 Frontier	6.1	6.1	5.9	4.6	5.6	5.4	1.0	21.2%	-0.4	-7.4%
01 Lincoln Trail	3.4	5.4	8.7	5.2	6.1	6.7	0.8	15.8%	2.7	77.4%
02 Olney Central	8.1	6.3	6.3	4.7	6.1	5.7	1.4	29.0%	-2.1	-25.2%
03 Wabash Valley	6.4	5.5	7.9	7.3	6.4	7.2	-0.9	-12.5%	0.0	-0.6%
513 Illinois Valley	7.5	5.3	5.9	7.7	8.3	7.3	0.6	8.4%	0.9	11.8%
530 John A. Logan	13.5	11.9	11.7	10.7	8.8	10.4	-1.9	-17.6%	-4.7	-34.8%
539 John Wood	4.9	3.2	4.0	3.9	4.5	4.1	0.6	14.5%	-0.4	-8.0%
525 Joliet Junior	14.4	12.4	14.2	15.0	14.0	14.4	-1.1	-7.0%	-0.4	-2.7%
520 Kankakee	18.5	18.0	22.0	23.6	30.6	25.4	7.1	30.0%	12.1	65.2%
501 Kaskaskia	12.5	15.0	17.0	17.4	18.9	17.8	1.5	8.9%	6.4	51.3%
523 Kishwaukee	10.3	9.4	9.8	9.6	10.2	9.9	0.7	7.1%	0.0	-0.4%
517 Lake Land	8.1	9.0	9.1	9.3	9.3	9.2	0.0	-0.3%	1.2	14.5%
536 Lewis and Clark	13.9	10.6	9.5	7.9	8.0	8.4	0.1	1.1%	-6.0	-42.9%
526 Lincoln Land	10.5	7.3	8.7	9.6	8.5	8.9	-1.1	-11.4%	-2.0	-18.9%
528 McHenry County	15.0	14.9	15.5	16.1	15.3	15.6	-0.9	-5.3%	0.3	1.9%
524 Moraine Valley	14.9	12.2	14.2	13.6	14.7	14.1	1.1	8.1%	-0.2	-1.2%
527 Morton	11.3	6.5	10.3	7.6	8.5	8.8	0.9	12.4%	-2.8	-24.6%
535 Oakton	14.4	14.2	14.3	15.5	15.7	15.2	0.2	1.2%	1.2	8.6%
505 Parkland	6.1	8.1	9.8	11.9	10.7	10.8	-1.1	-9.5%	4.7	77.0%
515 Prairie State	9.2	8.9	14.1	12.0	15.1	13.7	3.1	26.2%	5.9	64.0%
521 Rend Lake	9.1	9.2	7.9	9.7	10.0	9.2	0.3	3.4%	0.9	9.6%
537 Richland	9.6	9.8	9.3	9.7	10.7	9.9	1.0	10.1%	1.0	10.7%
511 Rock Valley	1.8	3.9	4.9	2.7	6.4	4.6	3.7	137.4%	4.6	257.1%
506 Sauk Valley	7.3	6.6	6.8	6.7	7.8	7.1	1.1	16.4%	0.5	7.2%
531 Shawnee	9.9	10.1	12.9	8.6	6.6	9.4	-2.0	-22.8%	-3.3	-32.9%
510 South Suburban	16.1	13.1	13.9	13.7	14.0	13.9	0.4	2.7%	-2.1	-12.9%
533 Southeastern Illinois	5.1	4.6	6.0	8.5	7.2	7.2	-1.2	-14.6%	2.1	40.8%
522 Southwestern Illinois	11.4	10.0	12.3	13.0	12.7	12.6	-0.3	-2.2%	1.2	10.7%
534 Spoon River	4.3	5.6	5.4	6.3	5.5	5.8	-0.8	-12.7%	1.3	30.1%
504 Triton	9.8	10.9	10.0	23.0	16.1	16.4	-6.9	-30.1%	6.3	64.2%
516 Waubensee	7.9	7.3	9.1	9.4	10.7	9.7	1.3	13.5%	2.7	34.3%
TOTALS/AVERAGES	11.3	9.8	11.0	11.6	11.8	11.5	0.2	1.8%	0.5	4.9%
Pure										
Minimum	1.8	3.2	2.6	2.7	4.5	4.1	-6.9	-44.6%	-6.0	-42.9%
Maximum	18.5	18.0	22.0	23.6	30.6	25.4	7.1	137.4%	12.1	263.5%
Median	9.2	7.8	9.3	9.4	9.0	9.2	0.3	4.5%	0.4	3.2%
Standard Deviation	3.9	3.6	3.9	4.5	4.6	4.2	2.1	26.2%	3.3	58.7%
Average	9.6	8.6	9.6	10.1	10.4	10.0	0.3	7.1%	0.8	19.3%

SOURCE OF DATA: ICCB Centralized Data System--Annual Course (AC) Data



Illinois Community College Board
Table B-12
TOP FIVE DUAL CREDIT COURSE ENROLLMENTS BY COLLEGE
IN CAREER AND TECHNICAL EDUCATION
FISCAL YEAR 2024

Dist. No. District/College	48.0508 Welding Technology/Welder	51.3902 Nursing Assistant/Aide and Patient Care Assistant/Aide	52.0701 Entrepreneurship/Entrepreneurial Studies	51.0710 Medical Office Assistant/ Specialist	47.0604 Automobile/Automotive Mechanics Technology/Technician	Total
503 Black Hawk	302	96	0	0	47	445
518 Carl Sandburg	34	0	20	0	0	54
508 City Colleges of Chicago	(16)	(0)	(129)	(261)	(188)	(594)
02 Harold Washington	0	0	1	0	0	1
04 Harry S Truman	0	0	6	5	1	12
01 Kennedy-King	0	0	66	61	90	217
03 Malcolm X	0	0	4	89	4	97
05 Olive-Harvey	1	0	51	1	83	136
06 Richard J. Daley	13	0	1	92	10	116
07 Wilbur Wright	2	0	0	13	0	15
502 College of DuPage	89	401	267	96	504	1,357
532 College of Lake County	157	225	0	354	126	862
507 Danville Area	28	10	0	23	78	139
509 Elgin	85	181	49	0	333	648
512 Harper	0	783	189	470	0	1,442
540 Heartland	157	124	4	117	0	402
519 Highland	32	60	0	0	37	129
514 Illinois Central	334	149	0	296	0	779
529 Illinois Eastern	(256)	(87)	(11)	(58)	(71)	(483)
04 Frontier	71	30	11	22	39	173
01 Lincoln Trail	93	17	0	7	0	117
02 Olney Central	76	27	0	3	28	134
03 Wabash Valley	16	13	0	26	4	59
513 Illinois Valley	167	60	8	22	0	257
530 John A. Logan	0	89	0	0	0	89
539 John Wood	62	5	0	0	0	67
525 Joliet Junior	289	232	117	0	65	703
520 Kankakee	92	104	12	0	230	438
501 Kaskaskia	81	75	88	125	53	422
523 Kishwaukee	75	30	0	14	53	172
517 Lake Land	171	130	29	6	47	383
536 Lewis and Clark	236	13	67	29	2	347
526 Lincoln Land	76	67	74	0	147	364
528 McHenry County	0	153	0	0	107	260
524 Moraine Valley	64	0	133	0	132	329
527 Morton	128	0	0	0	56	184
535 Oakton	141	171	213	499	210	1,234
505 Parkland	55	65	21	114	99	354
515 Prairie State	77	0	131	0	116	324
521 Rend Lake	15	47	0	0	116	178
537 Richland	96	30	1	0	40	167
511 Rock Valley	94	95	0	0	50	239
506 Sauk Valley	191	201	33	68	0	493
531 Shawnee	0	51	0	57	0	108
510 South Suburban	51	0	290	504	0	845
533 Southeastern Illinois	204	18	47	0	6	275
522 Southwestern Illinois	241	63	1516	53	0	1,873
534 Spoon River	102	9	0	0	0	111
504 Triton	0	54	0	33	262	349
516 Waubensee	<u>523</u>	<u>65</u>	<u>0</u>	<u>155</u>	<u>84</u>	<u>827</u>
TOTALS	4,721	3,943	3,449	3,354	3,259	18,726
Grand Total	182,093	182,093	182,093	182,093	182,093	182,093
Percent Top Five of Grand Total	2.6%	2.2%	1.9%	1.8%	1.8%	10.3%

SOURCE OF DATA: ICCB Centralized Data System--Annual Course (AC) Data



Illinois Community College Board
Table B-13
STATEWIDE DUAL CREDIT COURSE ENROLLMENT BY 6-DIGIT CIP
FOR FISCAL YEARS 2020-2024

CIP	COURSE NAME	2020	2021	2022	2023	2024	FY 2022-2024	FY 2023-2024	FY 2020-2024		
							3-Year Average	1-Year Difference	5-Year Difference	Number	Percent
01.0000	Agriculture, General.	1	0	2	9	9	7	0	0.0%	8	800.0%
01.0101	Agricultural Business and Management, General.	225	202	247	263	343	284	80	30.4%	118	52.4%
01.0102	Agribusiness/Agricultural Business Operations.	20	4	17	9	29	18	20	222.2%	9	45.0%
01.0103	Agricultural Economics.	51	78	63	94	57	71	-37	-39.4%	6	11.8%
01.0105	Agricultural/Farm Supplies Retailing and Wholesaling.	15	36	36	55	9	33	-46	-83.6%	-6	-40.0%
01.0106	Agricultural Business Technology/Technician.	4	0	9	0	0	3	0	--	-4	-100.0%
01.0201	Agricultural Mechanization, General.	100	143	106	187	203	165	16	8.6%	103	103.0%
01.0299	Agricultural Mechanization, Other.	0	0	0	0	1	0	1	--	1	--
01.0301	Agricultural Production Operations, General.	150	198	195	193	223	204	30	15.5%	73	48.7%
01.0302	Animal/Livestock Husbandry and Production.	264	195	349	328	433	370	105	32.0%	169	64.0%
01.0303	Aquaculture.	25	23	11	16	11	13	-5	-31.3%	-14	-56.0%
01.0304	Crop Production.	70	95	145	145	176	155	31	21.4%	106	151.4%
01.0308	Agroecology and Sustainable Agriculture.	0	0	21	1	98	40	97	9700.0%	98	--
01.0507	Equestrian/Equine Studies.	0	2	0	3	2	2	-1	-33.3%	2	--
01.0601	Applied Horticulture/Horticulture Operations, General.	196	145	119	238	299	219	61	25.6%	103	52.6%
01.0603	Ornamental Horticulture.	304	301	362	323	515	400	192	59.4%	211	69.4%
01.0604	Greenhouse Operations and Management.	42	89	45	156	140	114	-16	-10.3%	98	233.3%
01.0605	Landscaping and Groundskeeping.	36	56	85	80	96	87	16	20.0%	60	166.7%
01.0606	Plant Nursery Operations and Management.	0	0	0	6	0	2	-6	-100.0%	0	--
01.0607	Turf and Turfgrass Management.	35	0	16	4	26	15	22	550.0%	-9	-25.7%
01.0901	Animal Sciences, General.	40	76	76	84	71	77	-13	-15.5%	31	77.5%
01.1101	Plant Sciences, General.	0	0	1	0	0	0	0	--	0	--
01.1102	Agronomy and Crop Science.	108	140	106	126	116	116	-10	-7.9%	8	7.4%
01.1103	Horticultural Science.	108	94	128	144	273	182	129	89.6%	165	152.8%
01.1201	Soil Science and Agronomy, General	0	3	8	36	85	43	49	136.1%	85	--
01.8301	Veterinary/Animal Health Technology/Technician and Veterinary Assistant. (Moved from 51.0808)	84	62	81	100	96	92	-4	-4.0%	12	14.3%
01.9994	Career Exploration.	7	6	12	11	6	10	-5	-45.5%	-1	-14.3%
01.9996	Certification/Licensure Review.	8	17	0	10	0	3	-10	-100.0%	-8	-100.0%
01.9997	Topics.	17	25	49	34	0	28	-34	-100.0%	-17	-100.0%
01.9999	Agricultural/Animal/Plant/Veterinary Science and Related Fields, Other.	22	41	59	31	42	44	11	35.5%	20	90.9%
03.0511	Forest Technology/Technician.	0	0	0	0	5	2	5	--	5	--
03.0601	Wildlife, Fish and Wildlands Science and Management.	8	13	0	0	5	2	5	--	-3	-37.5%
04.0201	Architecture.	4	3	9	6	3	6	-3	-50.0%	-1	-25.0%
04.0902	Architectural and Building Sciences/Technology.	0	0	14	15	16	15	1	6.7%	16	--
05.0101	African Studies.	6	0	1	0	1	1	1	--	-5	-83.3%
05.0103	Asian Studies/Civilization.	0	0	4	0	0	1	0	--	0	--
05.0107	Latin American Studies.	26	2	21	9	14	15	5	55.6%	-12	-46.2%
05.0108	Near and Middle Eastern Studies.	0	2	0	0	1	0	1	--	1	--
05.0127	Japanese Studies.	1	0	1	0	3	1	3	--	2	200.0%
05.0201	African-American/Black Studies.	120	227	240	391	462	364	71	18.2%	342	285.0%
05.0202	American Indian/Native American Studies.	2	0	0	1	1	1	0	0.0%	-1	-50.0%
05.0207	Women's Studies.	0	5	1	1	1	1	0	0.0%	1	--
05.0299	Ethnic, Cultural Minority, Gender, and Group Studies, Other.	2	2	0	1	1	1	0	0.0%	-1	-50.0%
09.0100	Communication, General	0	1	1	0	1	1	1	--	1	--
09.0101	Speech Communication and Rhetoric.	232	436	397	423	419	413	-4	-0.9%	187	80.6%
09.0102	Mass Communication/Media Studies.	33	39	60	27	31	39	4	14.8%	-2	-6.1%
09.0401	Journalism.	205	75	119	195	178	164	-17	-8.7%	-27	-13.2%
09.0402	Broadcast Journalism.	2	2	0	0	1	0	1	--	-1	-50.0%
09.0701	Radio and Television.	124	69	69	71	106	82	35	49.3%	-18	-14.5%
09.0702	Digital Communication and Media/Multimedia.	0	14	8	11	14	11	3	27.3%	14	--
09.0799	Radio, Television, and Digital Communication, Other.	0	2	0	0	3	1	3	--	3	--
09.0902	Public Relations/Image Management.	0	1	0	0	0	0	0	--	0	--
09.0903	Advertising.	4	3	1	12	10	8	-2	-16.7%	6	150.0%
10.0201	Photographic and Film/Video Technology/Technician.	145	123	139	149	149	146	0	0.0%	4	2.8%
10.0202	Radio and Television Broadcasting Technology/Technician.	0	0	0	1	12	4	11	1100.0%	12	--



Illinois Community College Board
Table B-13
STATEWIDE DUAL CREDIT COURSE ENROLLMENT BY 6-DIGIT CIP
FOR FISCAL YEARS 2020-2024

CIP	COURSE NAME	2020	2021	2022	2023	2024	FY 2022-2024	FY 2023-2024		FY 2020-2024	
							3-Year Average	1-Year Difference	5-Year Difference	Number	Percent
10.0203	Recording Arts Technology/Technician.	0	9	5	1	0	2	-1	-100.0%	0	--
10.0301	Graphic Communications, General.	15	5	3	26	20	16	-6	-23.1%	5	33.3%
10.0303	Prepress/Desktop Publishing and Digital Imaging Design.	592	327	379	393	517	430	124	31.6%	-75	-12.7%
10.0304	Animation, Interactive Technology, Video Graphics, and Special Effects.	203	201	270	252	257	260	5	2.0%	54	26.6%
10.0305	Graphic and Printing Equipment Operator, General Production.	36	56	4	4	3	4	-1	-25.0%	-33	-91.7%
10.0399	Graphic Communications, Other.	0	0	0	0	3	1	3	--	3	--
10.9999	Communications Technologies/Technicians and Support Services, Other. (Designation for vocational communication course enrollees—1.2)	23	11	18	22	0	13	-22	-100.0%	-23	-100.0%
11.0101	Computer and Information Sciences, General.	1,013	1,084	751	678	665	698	-13	-1.9%	-348	-34.4%
11.0103	Information Technology.	133	108	295	288	194	259	-94	-32.6%	61	45.9%
11.0201	Computer Programming/Programmer, General.	3,154	1,808	2,331	2,461	2846	2,546	385	15.6%	-308	-9.8%
11.0202	Computer Programming, Specific Applications.	212	50	106	143	116	122	-27	-18.9%	-96	-45.3%
11.0203	Computer Programming, Vendor/Product Certification.	31	58	0	0	0	0	0	--	-31	-100.0%
11.0301	Data Processing and Data Processing Technology/Technician.	14	20	20	52	19	30	-33	-63.5%	5	35.7%
11.0401	Information Science/Studies.	110	112	4	3	2	3	-1	-33.3%	-108	-98.2%
11.0501	Computer Systems Analysis/Analyst.	2	2	0	2	3	2	1	50.0%	1	50.0%
11.0601	Data Entry/Microcomputer Applications, General.	238	203	260	250	269	260	19	7.6%	31	13.0%
11.0602	Word Processing.	12	9	8	33	9	17	-24	-72.7%	-3	-25.0%
11.0701	Computer Science.	0	5	0	0	0	0	0	--	0	--
11.0801	Web Page, Digital/Multimedia and Information Resources Design.	441	313	285	314	312	304	-2	-0.6%	-129	-29.3%
11.0802	Data Modeling/Warehousing and Database Administration.	2	9	10	6	10	9	4	66.7%	8	400.0%
11.0803	Computer Graphics.	119	66	89	90	74	84	-16	-17.8%	-45	-37.8%
11.0901	Computer Systems Networking and Telecommunications.	1,290	1,310	1,848	1,584	1481	1,638	-103	-6.5%	191	14.8%
11.1003	Computer and Information Systems Security/Auditing/Information Assurance.	18	196	270	233	322	275	89	38.2%	304	1688.9%
11.1004	Web/Multimedia Management and Webmaster.	21	19	17	9	0	9	-9	-100.0%	-21	-100.0%
11.1006	Computer Support Specialist.	1	1	15	39	55	36	16	41.0%	54	5400.0%
11.1099	Computer/Information Technology Services Administration and Management, Other.	32	63	56	50	40	49	-10	-20.0%	8	25.0%
11.9997	Topics.	42	11	17	17	24	19	7	41.2%	-18	-42.9%
12.0401	Cosmetology/Cosmetologist, General.	646	516	639	1,017	1271	976	254	25.0%	625	96.7%
12.0402	Barbering/Barber.	0	0	60	136	186	127	50	36.8%	186	--
12.0409	Aesthetician/Esthetician and Skin Care Specialist.	128	88	125	179	198	167	19	10.6%	70	54.7%
12.0410	Nail Technician/Specialist and Manicurist.	0	4	2	5	3	3	-2	-40.0%	3	--
12.0412	Salon/Beauty Salon Management/Manager.	237	189	237	372	400	336	28	7.5%	163	68.8%
12.0500	Cooking and Related Culinary Arts, General.	17	22	43	46	45	45	-1	-2.2%	28	164.7%
12.0501	Baking and Pastry Arts/Baker/Pastry Chef.	185	191	220	297	66	194	-231	-77.8%	-119	-64.3%
12.0503	Culinary Arts/Chef Training.	618	680	873	1,013	1492	1,126	479	47.3%	874	141.4%
12.0504	Restaurant, Culinary, and Catering Management/Manager.	1,817	1,397	1,648	2,069	2227	1,981	158	7.6%	410	22.6%
12.0505	Food Preparation/Professional Cooking/Kitchen Assistant.	205	224	120	133	124	126	-9	-6.8%	-81	-39.5%
12.0507	Food Service, Waiter/Waitress, and Dining Room Management/Manager.	17	11	14	0	0	5	0	--	-17	-100.0%
12.9994	Career Exploration.	0	7	20	10	6	12	-4	-40.0%	6	--
12.9996	Certification/Licensure Review.	27	22	26	52	38	39	-14	-26.9%	11	40.7%
13.0101	Education, General.	167	154	215	397	421	344	24	6.0%	254	152.1%
13.0201	Bilingual and Multilingual Education.	0	3	0	4	2	2	-2	-50.0%	2	--
13.0299	Bilingual, Multilingual, and Multicultural Education, Other.	24	44	33	28	45	35	17	60.7%	21	87.5%
13.0501	Educational/Instructional Technology.	30	46	35	30	41	35	11	36.7%	11	36.7%
13.0901	Social and Philosophical Foundations of Education.	319	657	463	836	1045	781	209	25.0%	726	227.6%
13.1001	Special Education and Teaching, General.	2	11	32	49	35	39	-14	-28.6%	33	1650.0%
13.1202	Elementary Education and Teaching.	6	4	4	19	7	10	-12	-63.2%	1	16.7%
13.1210	Early Childhood Education and Teaching.	168	140	70	139	159	123	20	14.4%	-9	-5.4%
13.1301	Agricultural Teacher Education.	0	2	0	11	9	7	-2	-18.2%	9	--
13.1302	Art Teacher Education.	1	0	0	0	0	0	0	--	-1	-100.0%
13.1307	Health Teacher Education.	367	305	340	444	600	461	156	35.1%	233	63.5%
13.1314	Physical Education Teaching and Coaching.	5	23	23	9	16	16	7	77.8%	11	220.0%
13.1501	Teacher Assistant/Aide.	1	12	15	21	12	16	-9	-42.9%	11	1100.0%
13.9997	Topics.	42	19	450	14	15	160	1	7.1%	-27	-64.3%
13.9998	Internships.	40	36	65	139	152	119	13	9.4%	112	280.0%



Illinois Community College Board
Table B-13
STATEWIDE DUAL CREDIT COURSE ENROLLMENT BY 6-DIGIT CIP
FOR FISCAL YEARS 2020-2024

CIP	COURSE NAME	2020	2021	2022	2023	2024	FY 2022-2024	FY 2023-2024	FY 2020-2024		
							3-Year Average	1-Year Difference	5-Year Difference	Number	Percent
14.0101	Engineering, General.	12	11	21	10	30	20	20	200.0%	18	150.0%
14.1101	Engineering Mechanics.	1	2	2	6	2	3	-4	-66.7%	1	100.0%
14.1201	Engineering Physics/Applied Physics.	32	21	26	39	44	36	5	12.8%	12	37.5%
14.4201	Mechatronics, Robotics, and Automation Engineering.	7	40	124	23	109	85	86	373.9%	102	1457.1%
15.0000	Engineering Technologies/Technicians, General.	35	24	32	29	43	35	14	48.3%	8	22.9%
15.0101	Architectural Engineering Technologies/Technicians.	50	37	34	41	58	44	17	41.5%	8	16.0%
15.0201	Civil Engineering Technologies/Technicians.	39	66	42	51	63	52	12	23.5%	24	61.5%
15.0303	Electrical, Electronic, and Communications Engineering Technology/Technician.	326	299	515	447	450	471	3	0.7%	124	38.0%
15.0304	Laser and Optical Technology/Technician.	21	3	12	2	0	5	-2	-100.0%	-21	-100.0%
15.0305	Telecommunications Technology/Technician. (Includes existing programs in 2020 moved from 15.0310)	1	0	0	0	0	0	0	--	-1	-100.0%
15.0306	Integrated Circuit Design Technology/Technician.	0	0	13	11	0	8	-11	-100.0%	0	--
15.0310	Telecommunication Electronics Technology (Cross to 15.0305 for IPEDS)	0	0	0	17	36	18	19	111.8%	36	--
15.0403	Electromechanical/Electromechanical Engineering Technology/Technician.	9	8	7	835	833	558	-2	-0.2%	824	9155.6%
15.0405	Robotics Technology/Technician.	1	12	19	8	20	16	12	150.0%	19	1900.0%
15.0406	Automation Engineer Technology/Technician.	206	174	204	240	259	234	19	7.9%	53	25.7%
15.0499	Electromechanical Technologies/Technicians, Other.	870	770	898	77	127	367	50	64.9%	-743	-85.4%
15.0612	Industrial Technology/Technician.	19	23	1	25	87	38	62	248.0%	68	357.9%
15.0613	Manufacturing Engineering Technology/Technician.	463	624	673	735	812	740	77	10.5%	349	75.4%
15.0614	Welding Engineering Technology/Technician.	0	1	17	27	45	30	18	66.7%	45	--
15.0701	Occupational Safety and Health Technology/Technician.	120	83	102	104	122	109	18	17.3%	2	1.7%
15.0702	Quality Control Technology/Technician.	99	82	45	44	31	40	-13	-29.5%	-68	-68.7%
15.0703	Industrial Safety Technology/Technician.	8	34	0	6	9	5	3	50.0%	1	12.5%
15.0805	Mechanical Engineering/Mechanical Technology/Technician.	0	0	0	12	0	4	-12	-100.0%	0	--
15.1103	Hydraulics and Fluid Power Technology/Technician. (Includes existing programs in 2020 moved from 15.0410)	0	0	3	0	1	1	1	--	1	--
15.1201	Computer Engineering Technology/Technician.	224	183	235	253	247	245	-6	-2.4%	23	10.3%
15.1202	Computer/Computer Systems Technology/Technician.	0	1	0	0	0	0	0	--	0	--
15.1203	Computer Hardware Technology/Technician.	67	65	112	77	46	78	-31	-40.3%	-21	-31.3%
15.1301	Drafting and Design Technology/Technician, General.	1,283	1,023	986	1,419	1584	1,330	165	11.6%	301	23.5%
15.1302	CAD/CADD Drafting and/or Design Technology/Technician. (Includes existing programs in 2020 moved from 15.0810)	1,644	1,165	1,480	1,760	2045	1,762	285	16.2%	401	24.4%
15.1303	Architectural Drafting and Architectural CAD/CADD.	123	137	140	154	200	165	46	29.9%	77	62.6%
15.1306	Mechanical Drafting and Mechanical Drafting CAD/CADD.	47	88	104	110	141	118	31	28.2%	94	200.0%
15.1307	3-D Modeling and Design Technology/Technician.	0	0	0	0	1	0	1	--	1	--
15.1601	Nanotechnology.	38	59	0	0	0	0	0	--	-38	-100.0%
15.1701	Energy Systems Technology/Technician.	0	0	1	1	0	1	-1	-100.0%	0	--
15.9994	Career Exploration	0	0	0	0	3	1	3	--	3	--
15.9995	Supervised Independent Study.	0	0	0	75	0	25	-75	-100.0%	0	--
15.9997	Topics.	128	35	44	41	58	48	17	41.5%	-70	-54.7%
15.9998	Internships.	1	0	1	0	0	0	0	--	-1	-100.0%
15.9999	Engineering/Engineering-Related Technologies/Technicians, Other.	23	20	25	26	22	24	-4	-15.4%	-1	-4.3%
16.0301	Chinese Language and Literature.	9	7	11	27	15	18	-12	-44.4%	6	66.7%
16.0302	Japanese Language and Literature.	34	27	19	34	26	26	-8	-23.5%	-8	-23.5%
16.0501	German Language and Literature.	168	313	531	636	616	594	-20	-3.1%	448	266.7%
16.0901	French Language and Literature.	214	375	647	532	608	596	76	14.3%	394	184.1%
16.0902	Italian Language and Literature.	22	20	26	0	0	9	0	--	-22	-100.0%
16.0905	Spanish Language and Literature.	5,344	4,994	6,403	6,748	7226	6,792	478	7.1%	1,882	35.2%
16.0997	Topics.	0	186	0	0	0	0	0	--	0	--
16.1101	Arabic Language and Literature.	59	49	43	46	68	52	22	47.8%	9	15.3%
16.1601	American Sign Language (ASL).	44	41	34	91	41	55	-50	-54.9%	-3	-6.8%
16.1603	Sign Language Interpretation and Translation.	52	35	41	38	24	34	-14	-36.8%	-28	-53.8%
16.9996	Certification/Licensure Review.	32	28	21	34	24	26	-10	-29.4%	-8	-25.0%
19.0101	Family and Consumer Sciences/Human Sciences, General.	1,481	1,450	2,006	1,855	1949	1,937	94	5.1%	468	31.6%
19.0401	Family Resource Management Studies, General.	1	1	0	1	0	0	-1	-100.0%	-1	-100.0%
19.0402	Consumer Economics.	0	5	26	15	27	23	12	80.0%	27	--



Illinois Community College Board
Table B-13
STATEWIDE DUAL CREDIT COURSE ENROLLMENT BY 6-DIGIT CIP
FOR FISCAL YEARS 2020-2024

CIP	COURSE NAME	2020	2021	2022	2023	2024	FY 2022-2024	FY 2023-2024		FY 2020-2024	
							3-Year Average	1-Year Difference	5-Year Difference	Number	Percent
19.0501	Foods, Nutrition, and Wellness Studies, General.	60	73	91	109	79	93	-30	-27.5%	19	31.7%
19.0504	Human Nutrition.	107	121	162	168	127	152	-41	-24.4%	20	18.7%
19.0701	Human Development and Family Studies, General.	9	6	18	16	19	18	3	18.8%	10	111.1%
19.0706	Child Development. (Includes existing programs in 2020 moved from 20.0102)	15	11	10	16	19	15	3	18.8%	4	26.7%
19.0708	Child Care and Support Services Management.	1	1	0	0	0	0	0	--	-1	-100.0%
19.0709	Child Care Provider/Assistant.	936	760	801	828	1253	961	425	51.3%	317	33.9%
19.0901	Apparel and Textiles, General. (Includes existing programs in 2020 moved from 20.0103)	42	20	62	37	0	33	-37	-100.0%	-42	-100.0%
19.0902	Apparel and Textile Manufacture.	22	13	8	13	12	11	-1	-7.7%	-10	-45.5%
19.9997	Topics.	33	34	32	16	33	27	17	106.3%	0	0.0%
19.9999	Family and Consumer Sciences/Human Sciences, Other.	0	0	22	24	16	21	-8	-33.3%	16	--
22.0302	Legal Assistant/Paralegal.	1	3	0	1	2	1	1	100.0%	1	100.0%
23.0101	English Language and Literature, General.	359	392	356	469	585	470	116	24.7%	226	63.0%
23.1301	Writing, General.	20,961	21,259	22,122	26,363	30,125	26,203	3,762	14.3%	9,164	43.7%
23.1302	Creative Writing.	80	70	46	66	83	65	17	25.8%	3	3.8%
23.1303	Professional, Technical, Business, and Scientific Writing.	162	169	122	140	146	136	6	4.3%	-16	-9.9%
23.1304	Rhetoric and Composition.	4,746	5,537	5,553	5,805	6,568	5,975	763	13.1%	1,822	38.4%
23.1401	General Literature.	0	6	0	0	0	0	0	--	0	--
23.1402	American Literature (United States).	819	808	834	1,091	1,236	1,054	145	13.3%	417	50.9%
23.1404	English Literature (British and Commonwealth).	272	154	295	104	157	185	53	51.0%	-115	-42.3%
23.1405	Children's and Adolescent Literature.	2	0	1	0	3	1	3	--	1	50.0%
23.9997	Topics.	1	28	0	0	4	1	4	--	3	300.0%
24.0101	Liberal Arts and Sciences/Liberal Studies.	0	9	7	28	32	22	4	14.3%	32	--
24.0102	General Studies.	1,500	1,834	1,955	1,868	1,918	1,914	50	2.7%	418	27.9%
24.0103	Humanities/Humanistic Studies.	470	408	498	443	576	506	133	30.0%	106	22.6%
24.0105	Orientation Courses (Cross to 24.0199 for IPEDS)	589	432	282	319	429	343	110	34.5%	-160	-27.2%
24.0197	Special Topics.	0	0	2	1	0	1	-1	-100.0%	0	--
24.0198	Internships.	94	50	60	46	45	50	-1	-2.2%	-49	-52.1%
24.0199	Liberal Arts and Sciences, General Studies and Humanities, Other.	120	112	41	39	11	30	-28	-71.8%	-109	-90.8%
24.9997	Topics.	15	17	6	6	19	10	13	216.7%	4	26.7%
26.0101	Biology/Biological Sciences, General. (Includes existing programs in 2020 moved from 26.0699)	2,831	2,947	3,441	3,220	3,555	3,405	335	10.4%	724	25.6%
26.0301	Botany/Plant Biology.	7	3	10	30	3	14	-27	-90.0%	-4	-57.1%
26.0403	Anatomy.	1,424	1,623	1,505	1,591	1,868	1,655	277	17.4%	444	31.2%
26.0406	Cell/Cellular and Molecular Biology.	2	8	3	6	3	4	-3	-50.0%	1	50.0%
26.0502	Microbiology, General.	33	40	46	35	62	48	27	77.1%	29	87.9%
26.0701	Zoology/Animal Biology.	74	62	34	45	58	46	13	28.9%	-16	-21.6%
26.0801	Genetics, General.	14	55	47	73	59	60	-14	-19.2%	45	321.4%
26.0910	Pathology/Experimental Pathology.	25	0	0	0	0	0	0	--	-25	-100.0%
26.1001	Pharmacology.	24	25	19	22	25	22	3	13.6%	1	4.2%
26.1301	Ecology.	108	89	233	270	361	288	91	33.7%	253	234.3%
26.1302	Marine Biology and Biological Oceanography.	100	0	1	0	1	1	1	--	-99	-99.0%
26.1303	Evolutionary Biology.	0	0	0	1	0	0	-1	-100.0%	0	--
26.1305	Environmental Biology.	393	389	446	465	587	499	122	26.2%	194	49.4%
27.0101	Mathematics, General.	7,900	8,643	8,267	8,706	8,743	8,572	37	0.4%	843	10.7%
27.0103	Analysis and Functional Analysis.	53	52	56	57	47	53	-10	-17.5%	-6	-11.3%
27.0301	Applied Mathematics, General.	1,977	1,931	2,234	2,444	2,770	2,483	326	13.3%	793	40.1%
27.0304	Computational and Applied Mathematics.	0	0	3	0	2	2	2	--	2	--
27.0501	Statistics, General.	2,952	3,214	3,648	4,282	4,998	4,309	716	16.7%	2,046	69.3%
27.0503	Mathematics and Statistics.	0	0	0	0	2	1	2	--	2	--
30.0101	Biological and Physical Sciences.	41	76	72	40	47	53	7	17.5%	6	14.6%
30.0197	Topics.	17	19	12	0	0	4	0	--	-17	-100.0%
30.1101	Gerontology.	0	0	0	3	0	1	-3	-100.0%	0	--
30.2301	Intercultural/Multicultural and Diversity Studies.	1	0	0	0	0	0	0	--	-1	-100.0%
30.3301	Sustainability Studies.	13	14	0	0	0	0	0	--	-13	-100.0%
30.9996	Certification/Licensure Review	0	0	0	0	15	5	15	--	15	--
31.0101	Parks, Recreation and Leisure Studies.	0	2	1	2	1	1	-1	-50.0%	1	--



Illinois Community College Board
Table B-13
STATEWIDE DUAL CREDIT COURSE ENROLLMENT BY 6-DIGIT CIP
FOR FISCAL YEARS 2020-2024

CIP	COURSE NAME	2020	2021	2022	2023	2024	FY 2022-2024	FY 2023-2024	FY 2020-2024		
							3-Year Average	1-Year Difference	5-Year Difference	Number	Percent
31.0301	Parks, Recreation, and Leisure Facilities Management, General.	5	2	0	0	0	0	0	--	-5	-100.0%
31.0501	Sports, Kinesiology, and Physical Education/Fitness, General.	2,142	2,999	3,761	4,874	5,489	4,708	615	12.6%	3,347	156.3%
31.0504	Sport and Fitness Administration/Management.	12	56	3	3	21	9	18	600.0%	9	75.0%
32.0107	Career Exploration/Awareness Skills.	127	112	215	275	277	256	2	0.7%	150	118.1%
36.0202	Aircraft Pilot (Private) (Moved from 36.0119)	17	12	16	18	27	20	9	50.0%	10	58.8%
38.0101	Philosophy.	309	197	237	208	225	223	17	8.2%	-84	-27.2%
38.0102	Logic.	101	77	94	107	100	100	-7	-6.5%	-1	-1.0%
38.0103	Ethics.	311	209	245	298	370	304	72	24.2%	59	19.0%
38.0201	Religion/Religious Studies.	300	237	232	230	289	250	59	25.7%	-11	-3.7%
40.0101	Physical Sciences, General.	55	64	56	74	54	61	-20	-27.0%	-1	-1.8%
40.0201	Astronomy.	156	152	180	164	227	190	63	38.4%	71	45.5%
40.0401	Atmospheric Sciences and Meteorology, General.	20	69	56	68	68	64	0	0.0%	48	240.0%
40.0499	Atmospheric Sciences and Meteorology, Other.	0	1	0	0	26	9	26	--	26	--
40.0501	Chemistry, General.	730	832	969	1,088	1,197	1,085	109	10.0%	467	64.0%
40.0503	Inorganic Chemistry.	162	147	134	169	141	148	-28	-16.6%	-21	-13.0%
40.0504	Organic Chemistry.	58	54	43	26	44	38	18	69.2%	-14	-24.1%
40.0599	Chemistry, Other.	3	9	23	14	37	25	23	164.3%	34	1133.3%
40.0601	Geology/Earth Science, General.	722	644	724	718	883	775	165	23.0%	161	22.3%
40.0603	Geophysics and Seismology.	8	6	9	12	7	9	-5	-41.7%	-1	-12.5%
40.0607	Oceanography, Chemical and Physical.	25	5	38	3	6	16	3	100.0%	-19	-76.0%
40.0699	Geological and Earth Sciences/Geosciences, Other.	0	0	0	0	1	0	1	--	1	--
40.0801	Physics, General.	257	299	169	188	191	183	3	1.6%	-66	-25.7%
40.9996	Certification/Licensure Review.	0	0	0	2	74	25	72	3600.0%	74	--
42.0101	Psychology, General.	3,467	3,547	3,806	4,336	4,680	4,274	344	7.9%	1,213	35.0%
42.2701	Cognitive Psychology and Psycholinguistics.	13	2	33	0	0	11	0	--	-13	-100.0%
42.2703	Developmental and Child Psychology.	533	553	570	593	853	672	260	43.8%	320	60.0%
42.2707	Social Psychology.	133	105	88	90	141	106	51	56.7%	8	6.0%
42.2804	Industrial and Organizational Psychology.	2	0	3	3	2	3	-1	-33.3%	0	0.0%
42.2806	Educational Psychology.	22	19	11	7	9	9	2	28.6%	-13	-59.1%
42.9996	Certification/Licensure Review.	0	0	1	1	3	2	2	200.0%	3	--
43.0102	Corrections.	240	182	86	196	127	136	-69	-35.2%	-113	-47.1%
43.0103	Criminal Justice/Law Enforcement Administration.	388	346	436	305	429	390	124	40.7%	41	10.6%
43.0104	Criminal Justice/Safety Studies.	169	181	224	241	199	221	-42	-17.4%	30	17.8%
43.0107	Criminal Justice/Police Science.	1,347	1,235	1,380	1,314	1,439	1,378	125	9.5%	92	6.8%
43.0109	Security and Loss Prevention Services.	8	12	0	0	0	0	0	--	-8	-100.0%
43.0114	Law Enforcement Investigation and Interviewing.	0	3	0	4	0	1	-4	-100.0%	0	--
43.0199	Corrections and Criminal Justice, Other.	30	56	7	66	10	28	-56	-84.8%	-20	-66.7%
43.0201	Fire Prevention and Safety Technology/Technician.	165	137	153	158	157	156	-1	-0.6%	-8	-4.8%
43.0202	Fire Services Administration.	12	10	12	34	21	22	-13	-38.2%	9	75.0%
43.0203	Fire Science/Fire-fighting.	414	390	403	435	440	426	5	1.1%	26	6.3%
43.0204	Fire Systems Technology.	12	9	10	9	13	11	4	44.4%	1	8.3%
43.0301	Homeland Security.	0	0	28	21	26	25	5	23.8%	26	--
43.0403	Cyber/Computer Forensics and Counterterrorism (Moved from 43.0116)	0	14	9	14	9	11	-5	-35.7%	9	--
43.0406	Forensic Science and Technology. (Moved from 43.0106)	78	126	171	182	134	162	-48	-26.4%	56	71.8%
43.9994	Career Exploration.	79	19	16	43	31	30	-12	-27.9%	-48	-60.8%
43.9996	Certification/Licensure Review	0	0	0	0	8	3	8	--	8	--
43.9997	Topics.	9	7	7	15	0	7	-15	-100.0%	-9	-100.0%
43.9998	Internship.	12	9	8	28	16	17	-12	-42.9%	4	33.3%
44.0701	Social Work.	66	54	107	151	142	133	-9	-6.0%	76	115.2%
44.9998	Internships	0	0	0	0	1	0	1	--	1	--
45.0101	Social Sciences, General.	34	22	32	47	24	34	-23	-48.9%	-10	-29.4%
45.0201	Anthropology, General.	161	92	66	83	148	99	65	78.3%	-13	-8.1%
45.0301	Archeology.	0	1	2	0	1	1	1	--	1	--
45.0401	Criminology.	53	113	74	142	91	102	-51	-35.9%	38	71.7%
45.0501	Demography and Population Studies.	1	1	0	2	2	1	0	0.0%	1	100.0%
45.0601	Economics, General.	868	631	666	758	865	763	107	14.1%	-3	-0.3%



Illinois Community College Board
Table B-13
STATEWIDE DUAL CREDIT COURSE ENROLLMENT BY 6-DIGIT CIP
FOR FISCAL YEARS 2020-2024

CIP	COURSE NAME	2020	2021	2022	2023	2024	FY 2022-2024	FY 2023-2024	FY 2020-2024		
							3-Year Average	1-Year Difference	5-Year Difference	Number	Percent
45.0701	Geography.	98	125	93	83	164	113	81	97.6%	66	67.3%
45.0901	International Relations and Affairs.	126	69	80	88	86	85	-2	-2.3%	-40	-31.7%
45.1001	Political Science and Government, General.	1,181	1,483	1,479	1,604	1959	1,681	355	22.1%	778	65.9%
45.1101	Sociology, General.	1,357	1,381	1616	1816	1753	1,728	-63	-3.5%	396	29.2%
45.9997	Topics.	7	0	4	1	0	2	-1	-100.0%	-7	-100.0%
46.0000	Construction Trades, General.	37	25	39	33	14	29	-19	-57.6%	-23	-62.2%
46.0201	Carpentry/Carpenter.	588	671	985	808	754	849	-54	-6.7%	166	28.2%
46.0299	Carpenter/Construction, Other.	20	16	36	61	56	51	-5	-8.2%	36	180.0%
46.0302	Electrician.	28	33	37	55	23	38	-32	-58.2%	-5	-17.9%
46.0403	Building/Home/Construction Inspection/Inspector.	37	27	30	28	33	30	5	17.9%	-4	-10.8%
46.0415	Building Construction Technology/Technician.	0	1	78	65	75	73	10	15.4%	75	--
47.0103	Communications Systems Installation and Repair Technology/Technician.	5	13	12	0	0	4	0	--	-5	-100.0%
47.0104	Computer Installation and Repair Technology/Technician.	538	280	503	364	376	414	12	3.3%	-162	-30.1%
47.0105	Industrial Electronics Technology/Technician.	42	44	25	39	53	39	14	35.9%	11	26.2%
47.0199	Electrical/Electronics Maintenance and Repair Technologies/Technicians, Other.	10	0	0	0	0	0	0	--	-10	-100.0%
47.0201	Heating, Air Conditioning, Ventilation and Refrigeration MaintenanceTechnology/Technician.	52	62	77	111	157	115	46	41.4%	105	201.9%
47.0303	Industrial Mechanics and Maintenance Technology/Technician.	0	23	9	50	7	22	-43	-86.0%	7	--
47.0603	Autobody/Collision and Repair Technology/Technician.	99	77	82	121	93	99	-28	-23.1%	-6	-6.1%
47.0604	Automobile/Automotive Mechanics Technology/Technician.	2,028	1,699	2,204	2,588	3259	2,684	671	25.9%	1,231	60.7%
47.0605	Diesel Mechanics Technology/Technician.	69	36	47	115	101	88	-14	-12.2%	32	46.4%
47.0606	Small Engine Mechanics and Repair Technology/Technician.	42	22	31	127	125	94	-2	-1.6%	83	197.6%
47.0609	Avionics Maintenance Technology/Technician.	0	0	0	0	28	9	28	--	28	--
47.0611	Motorcycle Maintenance and Repair Technology/Technician.	0	6	4	7	25	12	18	257.1%	25	--
47.0614	Alternative Fuel Vehicle Technology/Technician.	0	0	3	2	1	2	-1	-50.0%	1	--
47.9996	Certification/Licensure Review.	2	3	9	9	7	8	-2	-22.2%	5	250.0%
47.9997	Topics.	10	6	1	16	0	6	-16	-100.0%	-10	-100.0%
47.9998	Internship.	0	0	5	0	0	2	0	--	0	--
47.9999	Mechanic and Repair Technologies/Technicians, Other.	4	27	28	37	54	40	17	45.9%	50	1250.0%
48.0000	Precision Production Trades, General.	0	0	0	14	12	9	-2	-14.3%	12	--
48.0501	Machine Tool Technology/Machinist.	110	83	86	104	108	99	4	3.8%	-2	-1.8%
48.0503	Machine Shop Technology/Assistant.	877	641	733	687	733	718	46	6.7%	-144	-16.4%
48.0506	Sheet Metal Technology/Sheetworking.	81	64	60	77	46	61	-31	-40.3%	-35	-43.2%
48.0508	Welding Technology/Welder. (Includes existing programs in 2020 moved from 15.0610)	3,047	2,381	3,198	4,263	4721	4,061	458	10.7%	1,674	54.9%
48.0510	Computer Numerically Controlled (CNC) Machinist Technology/CNC Machinist.	26	37	64	163	163	130	0	0.0%	137	526.9%
48.0599	Precision Metal Working, Other.	41	19	29	22	31	27	9	40.9%	-10	-24.4%
48.9995	Supervised Independent Study.	0	9	6	0	0	2	0	--	0	--
48.9997	Topics.	12	12	15	18	44	26	26	144.4%	32	266.7%
49.0102	Airline/Commercial/Professional Pilot and Flight Crew.	12	10	9	9	14	11	5	55.6%	2	16.7%
49.0199	Air Transportation, Other.	0	0	0	51	17	23	-34	-66.7%	17	--
49.0205	Truck and Bus Driver/Commercial Vehicle Operator and Instructor.	0	0	0	4	9	4	5	125.0%	9	--
50.0101	Visual and Performing Arts, General.	19	34	23	32	23	26	-9	-28.1%	4	21.1%
50.0201	Crafts/Craft Design, Folk Art and Artisanry.	22	19	14	20	22	19	2	10.0%	0	0.0%
50.0301	Dance, General.	12	8	0	12	13	8	1	8.3%	1	8.3%
50.0302	Ballet.	0	9	0	13	14	9	1	7.7%	14	--
50.0401	Design and Visual Communications, General.	550	386	570	578	773	640	195	33.7%	223	40.5%
50.0406	Commercial Photography.	912	725	634	594	485	571	-109	-18.4%	-427	-46.8%
50.0407	Fashion/Apparel Design.	0	0	0	0	111	37	111	--	111	--
50.0408	Interior Design.	0	14	48	96	78	74	-18	-18.8%	78	--
50.0409	Graphic Design.	18	0	97	109	116	107	7	6.4%	98	544.4%
50.0501	Drama and Dramatics/Theatre Arts, General.	128	146	107	192	128	142	-64	-33.3%	0	0.0%
50.0502	Technical Theatre/Theatre Design and Technology	0	0	1	0	0	0	0	--	0	--
50.0505	Theatre Literature, History and Criticism.	0	1	0	1	53	18	52	5200.0%	53	--
50.0506	Acting.	18	95	41	11	63	38	52	472.7%	45	250.0%
50.0599	Dramatic/Theatre Arts and Stagecraft, Other.	9	17	13	10	14	12	4	40.0%	5	55.6%
50.0601	Film/Cinema/Media Studies.	23	31	38	63	42	48	-21	-33.3%	19	82.6%
50.0602	Cinematography and Film/Video Production.	181	160	113	174	175	154	1	0.6%	-6	-3.3%



Illinois Community College Board
Table B-13
STATEWIDE DUAL CREDIT COURSE ENROLLMENT BY 6-DIGIT CIP
FOR FISCAL YEARS 2020-2024

CIP	COURSE NAME	2020	2021	2022	2023	2024	FY 2022-2024	FY 2023-2024	FY 2020-2024		
							3-Year Average	1-Year Difference	5-Year Difference	Number	Percent
50.0605	Photography.	130	90	186	287	344	272	57	19.9%	214	164.6%
50.0701	Art/Art Studies, General.	507	504	608	642	770	673	128	19.9%	263	51.9%
50.0702	Fine/Studio Arts, General.	0	0	0	3	0	1	-3	-100.0%	0	--
50.0703	Art History, Criticism and Conservation.	203	180	181	177	237	198	60	33.9%	34	16.7%
50.0705	Drawing.	86	105	75	92	65	77	-27	-29.3%	-21	-24.4%
50.0708	Painting.	2	2	6	10	3	6	-7	-70.0%	1	50.0%
50.0709	Sculpture.	0	0	0	0	1	0	1	--	1	--
50.0710	Printmaking.	0	0	0	49	48	32	-1	-2.0%	48	--
50.0711	Ceramic Arts and Ceramics.	65	39	34	39	41	38	2	5.1%	-24	-36.9%
50.0713	Jewelry Arts.	0	0	1	0	4	2	4	--	4	--
50.0901	Music, General	0	10	0	0	21	7	21	--	21	--
50.0902	Music History, Literature, and Theory.	1,041	1,197	1,085	1,159	1168	1,137	9	0.8%	127	12.2%
50.0903	Music Performance, General.	405	335	399	450	516	455	66	14.7%	111	27.4%
50.0904	Music Theory and Composition.	89	74	186	184	446	272	262	142.4%	357	401.1%
50.0910	Jazz/Jazz Studies.	0	0	0	10	0	3	-10	-100.0%	0	--
50.0913	Music Technology.	0	0	1	0	1	1	1	--	1	--
50.9996	Certification/Licensure Review.	1	0	0	0	2	1	2	--	1	100.0%
50.9997	Topics.	4	9	8	15	9	11	-6	-40.0%	5	125.0%
51.0000	Health Services/Allied Health/Health Sciences, General.	1,506	1,515	2121	1946	1986	2,018	40	2.1%	480	31.9%
51.0705	Medical Office Management/Administration.	2	1	0	1	0	0	-1	-100.0%	-2	-100.0%
51.0707	Health Information/Medical Records Technology/Technician.	273	345	239	307	600	382	293	95.4%	327	119.8%
51.0708	Medical Transcription/Transcriptionist.	180	205	159	121	109	130	-12	-9.9%	-71	-39.4%
51.0710	Medical Office Assistant/Specialist.	2,803	2,807	2,777	2,886	3354	3,006	468	16.2%	551	19.7%
51.0714	Medical Insurance Specialist/Medical Biller.	2	0	0	1	7	3	6	600.0%	5	250.0%
51.0801	Medical/Clinical Assistant.	51	81	79	88	75	81	-13	-14.8%	24	47.1%
51.0805	Pharmacy Technician/Assistant.	2	1	0	3	5	3	2	66.7%	3	150.0%
51.0810	Emergency Care Attendant (EMT Ambulance).	0	1	0	1	1	1	0	0.0%	1	--
51.0904	Emergency Medical Technology/Technician (EMT Paramedic).	416	352	398	428	473	433	45	10.5%	57	13.7%
51.0907	Medical Radiologic Technology/Science - Radiation Therapist.	0	0	0	1	1	1	0	0.0%	1	--
51.0908	Respiratory Care Therapy/Therapist.	8	0	0	0	0	0	0	--	-8	-100.0%
51.0913	Athletic Training/Trainer.	0	3	0	1	0	0	-1	-100.0%	0	--
51.1004	Clinical/Medical Laboratory Technician.	61	25	7	20	31	19	11	55.0%	-30	-49.2%
51.1009	Phlebotomy Technician/Phlebotomist.	0	2	0	0	0	0	0	--	0	--
51.1012	Sterile Processing Technology/Technician.	0	0	0	26	168	65	142	546.2%	168	--
51.1508	Mental Health Counseling/Counselor.	0	0	0	1	0	0	-1	-100.0%	0	--
51.2201	Public Health, General.	54	57	69	43	54	55	11	25.6%	0	0.0%
51.3104	Dietitian Assistant.	19	11	3	3	15	7	12	400.0%	-4	-21.1%
51.3501	Massage Therapy/Therapeutic Massage.	15	11	9	11	10	10	-1	-9.1%	-5	-33.3%
51.3901	Licensed Practical/Vocational Nurse Training.	27	46	17	55	52	41	-3	-5.5%	25	92.6%
51.3902	Nursing Assistant/Aide and Patient Care Assistant/Aide. (Includes existing programs in 2020 moved from 51.1620)	2,878	2,695	3,151	3,390	3943	3,495	553	16.3%	1,065	37.0%
51.9994	Career Exploration.	371	384	485	395	522	467	127	32.2%	151	40.7%
51.9996	Certification/Licensure Review.	0	0	0	1	0	0	-1	-100.0%	0	--
51.9997	Topics.	29	23	26	33	19	26	-14	-42.4%	-10	-34.5%
51.9998	Internships.	9	16	5	9	5	6	-4	-44.4%	-4	-44.4%
51.9999	Health Professions and Related Clinical Sciences, Other.	415	338	346	319	333	333	14	4.4%	-82	-19.8%
52.0101	Business/Commerce, General.	1,537	1,820	1,867	2,112	2441	2,140	329	15.6%	904	58.8%
52.0201	Business Administration and Management, General.	157	147	196	185	154	178	-31	-16.8%	-3	-1.9%
52.0203	Logistics, Materials, and Supply Chain Management	0	1	0	0	0	0	0	--	0	--
52.0301	Accounting.	279	312	367	684	612	554	-72	-10.5%	333	119.4%
52.0302	Accounting Technology/Technician and Bookkeeping.	666	650	915	988	850	918	-138	-14.0%	184	27.6%
52.0401	Administrative Assistant and Secretarial Science, General.	1,398	1,168	1252	1315	1255	1,274	-60	-4.6%	-143	-10.2%
52.0407	Business/Office Automation/Technology/Data Entry.	2,505	2,178	2,444	2,729	3009	2,727	280	10.3%	504	20.1%
52.0408	General Office Occupations and Clerical Services.	2,070	1,154	1,270	1,307	1080	1,219	-227	-17.4%	-990	-47.8%
52.0411	Customer Service Support/Call Center/Teleservice Operation.	30	49	86	114	135	112	21	18.4%	105	350.0%
52.0701	Entrepreneurship/Entrepreneurial Studies.	1,239	1,622	2,660	3,001	3449	3,037	448	14.9%	2,210	178.4%



Illinois Community College Board
Table B-13
STATEWIDE DUAL CREDIT COURSE ENROLLMENT BY 6-DIGIT CIP
FOR FISCAL YEARS 2020-2024

CIP	COURSE NAME	2020	2021	2022	2023	2024	FY 2022-2024	FY 2023-2024		FY 2020-2024	
							3-Year Average	1-Year Difference	5-Year Difference		
							Number	Number	Percent	Number	Percent
52.0703	Small Business Administration/Management.	461	479	472	654	730	619	76	11.6%	269	58.4%
52.0801	Finance, General.	18	14	11	61	45	39	-16	-26.2%	27	150.0%
52.0803	Banking and Financial Support Services.	303	151	299	353	571	408	218	61.8%	268	88.4%
52.0807	Investments and Securities.	34	26	19	16	17	17	1	6.3%	-17	-50.0%
52.0903	Tourism and Travel Services Management.	13	11	11	13	4	9	-9	-69.2%	-9	-69.2%
52.0904	Hotel/Motel Administration/Management.	13	30	44	42	47	44	5	11.9%	34	261.5%
52.1001	Human Resources Management/Personnel Administration, General.	57	76	129	82	241	151	159	193.9%	184	322.8%
52.1003	Organizational Behavior Studies.	23	23	31	30	64	42	34	113.3%	41	178.3%
52.1101	International Business/Trade/Commerce.	0	0	0	4	1	2	-3	-75.0%	1	--
52.1401	Marketing/Marketing Management, General.	716	740	777	923	890	863	-33	-3.6%	174	24.3%
52.1402	Marketing Research.	32	24	269	207	259	245	52	25.1%	227	709.4%
52.1404	Digital Marketing.	0	0	0	2	54	19	52	2600.0%	54	--
52.1803	Retailing and Retail Operations.	1	0	0	1	0	0	-1	-100.0%	-1	-100.0%
52.1804	Selling Skills and Sales Operations.	46	62	54	62	23	46	-39	-62.9%	-23	-50.0%
52.1902	Fashion Merchandising.	47	140	157	157	177	164	20	12.7%	130	276.6%
52.1905	Tourism and Travel Services Marketing Operations.	6	4	10	12	22	15	10	83.3%	16	266.7%
52.1908	Business and Personal/Financial Services Marketing Operations.	0	0	0	0	22	7	22	--	22	--
52.2001	Construction Management, General	0	4	4	3	23	10	20	666.7%	23	--
52.9994	Career Exploration.	354	218	426	314	302	347	-12	-3.8%	-52	-14.7%
52.9997	Topics.	60	52	70	0	0	23	0	--	-60	-100.0%
52.9998	Internships.	1	33	41	28	31	33	3	10.7%	30	3000.0%
52.9999	Business, Management, Marketing, and Related Support Services, Other.	4	0	1	11	32	15	21	190.9%	28	700.0%
54.0101	History, General.	822	938	807	985	997	930	12	1.2%	175	21.3%
54.0102	American History (United States).	4,032	4,138	4,384	5,554	6340	5,426	786	14.2%	2,308	57.2%
54.0106	Asian History.	49	41	121	59	30	70	-29	-49.2%	-19	-38.8%
54.0196	World History.	7	8	3	18	8	10	-10	-55.6%	1	14.3%
54.9996	Certification/Licensure Review.	15	24	48	200	245	164	45	22.5%	230	1533.3%
	TOTALS	133,394	130,943	146,391	163,283	182,093	163,922	18,810	11.5%	48,699	36.5%
	Pure										
	Minimum	0	0	0	0	0	0	-231	-100.0%	-990	-100.0%
	Maximum	20,961	21,259	22,122	26,363	30,125	26,203	3,762	9700.0%	9,164	9155.6%
	Median	26	26	32	36	41	36	1	6.1%	4	19.9%
	Standard Deviation	1,267	1,287	1,363	1,579	1,780	1,572	218	642.8%	564	659.9%
	Average	324	318	355	396	442	398	46	79.1%	118	129.7%

Includes only Transfer courses and Career and Technical Education courses
SOURCE OF DATA: ICCB Centralized Data System--Annual Course (AC) Data



Illinois Community College Board
Table B-14
STATEWIDE DUAL CREDIT COURSE ENROLLMENT BY 2-DIGIT CIP
FOR FISCAL YEARS 2020-2024

CIP	COURSE NAME	2020	2021	2022	2023	FY 2022-2024		FY 2023-2024		FY 2020-2024	
						3-Year Average	Number	1-Year Difference	Percent	5-Year Difference	Percent
01.	Agriculture, Agriculture Operations, and Related Sciences	1,932	2,031	2,348	2,686	3,359	2,798	673	25.1%	1,427	73.9%
03.	Natural Resources and Conservation	8	13	0	0	10	3	10	--	2	25.0%
04.	Architecture and Related Services	4	3	23	21	19	21	-2	-9.5%	15	375.0%
05.	Area, Ethnic, Cultural, Gender, and Group Studies	157	238	268	403	484	385	81	20.1%	327	208.3%
09.	Communication, Journalism and Related Programs	600	642	655	739	763	719	24	3.2%	163	27.2%
10.	Communications, Technologies/Technicians and Support Services	1,014	732	818	848	961	876	113	13.3%	-53	-5.2%
11.	Computer and Information Sciences and Support Services	6,885	5,447	6,382	6,252	6,441	6,358	189	3.0%	-444	-6.4%
12.	Personal and Culinary Services	3,897	3,351	4,027	5,329	6,056	5,137	727	13.6%	2,159	55.4%
13.	Education	1,172	1,456	1,745	2,140	2,559	2,148	419	19.6%	1,387	118.3%
14.	Engineering	52	74	173	78	185	145	107	137.2%	133	255.8%
15.	Engineering Technologies and Engineering-Related Fields	5,845	5,016	5,745	6,627	7,343	6,572	716	10.8%	1,498	25.6%
16.	Foreign Languages, Literatures, and Linguistics	5,978	6,075	7,776	8,186	8,648	8,203	462	5.6%	2,670	44.7%
19.	Family and Consumer Sciences/Human Sciences	2,707	2,495	3,238	3,098	3,534	3,290	436	14.1%	827	30.6%
22.	Legal Professions and Studies	1	3	0	1	2	1	1	100.0%	1	100.0%
23.	English Language and Literature/Letters	27,402	28,423	29,329	34,038	38,907	34,091	4,869	14.3%	11,505	42.0%
24.	Liberal Arts and Sciences, General Studies and Humanities	2,788	2,862	2,851	2,750	3,030	2,877	280	10.2%	242	8.7%
26.	Biological and Biomedical Sciences	5,035	5,241	5,785	5,758	6,582	6,042	824	14.3%	1,547	30.7%
27.	Mathematics and Statistics	12,882	13,840	14,208	15,489	16,562	15,420	1,073	6.9%	3,680	28.6%
30.	Multi/Interdisciplinary Studies	72	109	84	43	62	63	19	44.2%	-10	-13.9%
31.	Parks, Recreation, Leisure and Fitness Studies	2,159	3,059	3,765	4,879	5,511	4,718	632	13.0%	3,352	155.3%
32.	Basic Skills and Developmental/Remedial Education	127	112	215	275	277	256	2	0.7%	150	118.1%
36.	Leisure and Recreational Activities	17	12	16	18	27	20	9	50.0%	10	58.8%
38.	Philosophy and Religious Studies	1,021	720	808	843	984	878	141	16.7%	-37	-3.6%
40.	Physical Sciences	2,196	2,282	2,401	2,526	2,956	2,628	430	17.0%	760	34.6%
42.	Psychology	4,170	4,226	4,512	5,030	5,688	5,077	658	13.1%	1,518	36.4%
43.	Homeland Security, Law Enforcement, Firefighting and Related Protective Services	2,963	2,736	2,950	3,065	3,059	3,025	-6	-0.2%	96	3.2%
44.	Public Administration and Social Services Professions	66	54	107	151	143	134	-8	-5.3%	77	116.7%
45.	Social Sciences	3,886	3,918	4,112	4,624	5,093	4,610	469	10.1%	1,207	31.1%
46.	Construction Trades	710	773	1,205	1,050	955	1,070	-95	-9.0%	245	34.5%
47.	Mechanics and Repair Technologies/Technicians	2,901	2,298	3,040	3,586	4,286	3,637	700	19.5%	1,385	47.7%
48.	Precision Production	4,194	3,246	4,191	5,348	5,858	5,132	510	9.5%	1,664	39.7%
49.	Transportation and Materials Moving	12	10	9	64	40	38	-24	-37.5%	28	233.3%
50.	Visual and Performing Arts	4,425	4,190	4,469	5,022	5,786	5,092	764	15.2%	1,361	30.8%
51.	Health Professions and Related Programs	9,121	8,919	9,891	10,090	11,763	10,581	1,673	16.6%	2,642	29.0%
52.	Business Management, Marketing, and Related Supportive Services	12,070	11,188	13,882	15,410	16,540	15,277	1,130	7.3%	4,470	37.0%
54.	History	4,925	5,149	5,363	6,816	7,620	6,600	804	11.8%	2,695	54.7%
	TOTALS	133,394	130,943	146,391	163,283	182,093	163,922	18,810	11.5%	48,699	36.5%
	Pure										
	Minimum	1	3	0	0	2	1	-95	-37.5%	-444	-13.9%
	Maximum	27,402	28,423	29,329	34,038	38,907	34,091	4,869	137.2%	11,505	375.0%
	Median	2,452	2,397	2,901	2,908	3,209	2,951	425	13.1%	794	36.7%
	Standard Deviation	5,218	5,335	5,640	6,415	7,218	6,419	849	29.5%	2,124	83.5%
	Average	3,705	3,637	4,066	4,536	5,058	4,553	523	17.0%	1,353	68.9%

Includes only Transfer courses and Career and Technical Education courses
SOURCE OF DATA: ICCB Centralized Data System--Annual Course (AC) Data



Illinois Community College Board
Table B-15
STATEWIDE DUAL CREDIT COURSE ENROLLMENT BY CAREER CLUSTER
FOR FISCAL YEARS 2020-2024

Career Clusters Code Title	2020*	2021*	2022	2023	2024	FY 2022-2024	FY 2023-2024	FY 2020-2024		
						3-Year Average Number	1-Year Difference Number	Percent	5-Year Difference Number	Percent
01 Agriculture, Food & Natural Resources	1,889	1,966	2,285	2,592	3,312	2,730	720	27.8%	1,423	75.3%
02 Architecture & Construction	1,025	1,184	1,677	1,637	1,694	1,669	57	3.5%	669	65.3%
03 Arts, Audio/Video Technology & Communications	6,040	5,559	5,905	6,567	7,503	6,658	936	14.3%	1,463	24.2%
04 Business Management & Administration	13,432	12,327	13,906	15,200	17,044	15,383	1,844	12.1%	3,612	26.9%
05 Education & Training	3,232	4,531	5,581	7,143	8,113	6,946	970	13.6%	4,881	151.0%
06 Finance	1,300	1,153	1,611	2,102	2,117	1,943	15	0.7%	817	62.8%
07 Government & Public Administration	1,307	1,552	1,559	1,692	2,045	1,765	353	20.9%	738	56.5%
08 Health Science	5,873	5,617	6,719	6,775	7,714	7,069	939	13.9%	1,841	31.3%
09 Hospitality & Tourism	2,891	2,558	2,965	3,622	3,999	3,529	377	10.4%	1,108	38.3%
10 Human Services	7,891	7,505	8,817	9,922	11,374	10,038	1,452	14.6%	3,483	44.1%
11 Information Technology	6,635	5,235	6,114	5,969	6,163	6,082	194	3.3%	-472	-7.1%
12 Law, Public Safety, Corrections & Security	2,964	2,739	2,950	3,066	3,053	3,023	-13	-0.4%	89	3.0%
13 Manufacturing	10,015	8,001	9,886	11,667	12,729	11,427	1,062	9.1%	2,714	27.1%
14 Marketing	852	1,277	1,805	1,716	1,714	1,745	-2	-0.1%	862	101.2%
15 Science, Technology, Engineering & Mathematics	23,273	24,472	25,721	27,432	29,937	27,697	2,505	9.1%	6,664	28.6%
16 Transportation, Distribution & Logistics	2,271	1,899	2,434	3,092	3,751	3,092	659	21.3%	1,480	65.2%
17 Other/Transfer	<u>42,504</u>	<u>43,368</u>	<u>46,456</u>	<u>53,089</u>	<u>59,831</u>	<u>53,125</u>	<u>6,742</u>	<u>12.7%</u>	<u>17,327</u>	<u>40.8%</u>
TOTALS	133,394	130,943	146,391	163,283	182,093	163,922	18,810	11.5%	48,699	36.5%
Pure										
Minimum	852	1,153	1,559	1,637	1,694	1,669	-13	-0.4%	-472	-7.1%
Maximum	42,504	43,368	46,456	53,089	59,831	53,125	6,742	27.8%	17,327	151.0%
Median	3,232	4,531	5,581	5,969	6,163	6,082	720	12.1%	1,463	40.8%
Standard Deviation	10,609.5	10,845.6	11,500.7	12,979.9	14,559.9	13,008.8	1,610.8	8.0%	4,146.6	37.4%
Average	7,847	7,703	8,611	9,605	10,711	9,642	1,106	11.0%	2,865	49.1%

*The CIP cluster crosswalk was updated in FY 2019, FY 2020, and FY 2021.
Includes only Transfer courses and Career and Technical Education courses
The Career Cluster brand is a registered trademark of Advance CTE
SOURCE OF DATA: ICCB Centralized Data System--Annual Course (AC) Data

Illinois Community College Board
Table B-16
DUAL CREDIT COURSE ENROLLMENT BY INSTRUCTIONAL SITE AND BY COLLEGE
FISCAL YEAR 2024



Dist. No. <u>District/College</u>	Main College <u>Campus</u>	High School <u>Campus</u>	Off-Campus College <u>Facility</u>	Online/ Internet	Distance Learning	Other/ Unknown <u>Location</u>	<u>Total</u>
503 Black Hawk	30	2,937	134	304	0	162	3,567
518 Carl Sandburg	123	1,002	162	1,008	0	0	2,295
508 City Colleges of Chicago	(85)	(0)	(11,303)	(0)	(0)	(1,441)	(12,829)
02 Harold Washington	0	0	2,134	0	0	110	2,244
04 Harry S Truman	18	0	274	0	0	1,061	1,353
01 Kennedy-King	16	0	1,506	0	0	87	1,609
03 Malcolm X	0	0	1,012	0	0	64	1,076
05 Olive-Harvey	51	0	1,383	0	0	40	1,474
06 Richard J. Daley	0	0	3,052	0	0	37	3,089
07 Wilbur Wright	0	0	1,942	0	0	42	1,984
502 College of DuPage	0	10,074	2,932	0	0	357	13,363
532 College of Lake County	63	4,834	72	25	0	457	5,451
507 Danville Area	2,015	360	0	0	0	0	2,375
509 Elgin	2,115	2,497	0	485	0	123	5,220
512 Harper	228	8,719	0	22	0	0	8,969
540 Heartland	257	3,790	4	459	62	0	4,572
519 Highland	202	1,344	0	8	0	310	1,864
514 Illinois Central	345	4,264	0	950	0	952	6,511
529 Illinois Eastern	(675)	(3,099)	(178)	(371)	(2)	(119)	(4,444)
04 Frontier	97	1,410	51	100	2	89	1,749
01 Lincoln Trail	258	461	111	37	0	0	867
02 Olney Central	190	969	16	66	0	4	1,245
03 Wabash Valley	130	259	0	168	0	26	583
513 Illinois Valley	0	1,754	0	58	0	0	1,812
530 John A. Logan	99	1,811	269	58	0	0	2,237
539 John Wood	23	561	0	202	0	0	786
525 Joliet Junior	0	9,815	0	0	0	0	9,815
520 Kankakee	0	0	0	0	0	1,022	1,022
501 Kaskaskia	0	6,636	77	0	0	0	6,713
523 Kishwaukee	397	1,324	0	149	0	0	1,870
517 Lake Land	102	3,447	0	194	0	0	3,743
536 Lewis and Clark	0	4,780	0	0	0	0	4,780
526 Lincoln Land	0	3,077	0	55	0	615	3,747
528 McHenry County	0	11,814	0	0	0	206	12,020
524 Moraine Valley	0	6,294	0	0	0	0	6,294
527 Morton	0	1,802	0	0	0	0	1,802
535 Oakton	0	4,792	0	0	0	28	4,820
505 Parkland	553	1,921	300	489	0	2	3,265
515 Prairie State	0	836	0	0	0	0	836
521 Rend Lake	190	2,037	167	36	78	0	2,508
537 Richland	1,165	1,357	0	296	0	0	2,818
511 Rock Valley	2,632	1,644	184	539	2	0	5,001
506 Sauk Valley	324	1,237	0	148	0	0	1,709
531 Shawnee	126	1,106	170	193	0	0	1,595
510 South Suburban	0	4,277	0	0	0	0	4,277
533 Southeastern Illinois	272	1,247	2	334	0	96	1,951
522 Southwestern Illinois	1,575	8,148	36	333	32	0	10,124
534 Spoon River	113	451	80	349	7	146	1,146
504 Triton	0	5,981	0	0	0	0	5,981
516 Waubonsee	360	5,114	2,228	247	0	12	7,961
TOTALS	14,069	136,183	18,298	7,312	183	6,048	182,093

SOURCE OF DATA: ICCB Centralized Data System--Annual Course (AC) Data