

**Illinois Community College Board
Complete College America
Progress Metric 1 & 2: Enrollment and Success in Remedial Education**

Complete College America (CCA), established in 2009, is a national nonprofit that aims to increase the graduation number and rate of college students. Illinois was in the first group of states to join the initiative and be part of the CCA Alliance of States (<http://www.completecollege.org/>). To advance higher education graduation rates, CCA officials developed a series of metrics identified under three categories: **Progress (PM)**, **Outcomes (OM)**, and **Context (CM)**. Generally, each metric has subsets including full-time/part-time status, race/ethnicity, gender, age groups, remedial status at entry, and Pell recipient status. ICCB generates the entire set of metrics for the state and each community college using agency longitudinal data systems.

Progress Metric 1, Enrollment in Remedial Education, measures the annual number and percentage of entering first-time undergraduate students who enroll in developmental courses. **Progress Metric 2, Success in Remedial Education**, measures the annual number and percentage of entering first-time undergraduate students who complete developmental education courses and complete a college-level course in the same subject within two academic years of entry. PM1 and PM2 have breakouts for Math only, English/reading only, and Both Math and English/reading. PM1 and PM2 are also available by enrollment status.

Table 1 Enrollment and Success in Remedial Education at Illinois Community Colleges Fiscal Years 2008, 2010-2013						
	Fall 2007 FY 08	Fall 2008 FY 09*	Fall 2009 FY 10	Fall 2010 FY 11	Fall 2011 FY 12	Fall 2012 FY 13
First-time Entry Students	41,241	NA	48,848	48,976	46,947	47,139
Students Enrolling in Remedial Courses (% of First-Time Entry Students)	20,888 50.6%	NA	24,388 49.9%	24,684 50.4%	23,161 49.3%	23,473 49.8%
Students Completing Remedial Courses (% of Students Enrolling in Remedial)	13,978 66.9%	NA	16,856 69.1%	17,097 69.3%	16,179 69.9%	16,563 70.6%
Students Completing College-Level Course in Same Subject Within 1 Year (% of Students Enrolling in Remedial)	NA	NA	NA	NA	2,476 10.7%	4,961 21.1%
Students Completing College-Level Course in Same Subject Within 2 Years (% of Students Enrolling in Remedial)	4,299 20.6%	NA	4,813 19.7%	4,733 19.2%	5,532 23.9%	7,301 31.1%

FY is the fiscal year of the entering cohort
*FY 09 was not required for the CCA data collection
SOURCE OF DATA: ICCB Annual Enrollment and Completion (A1) and Annual Course (AC) data

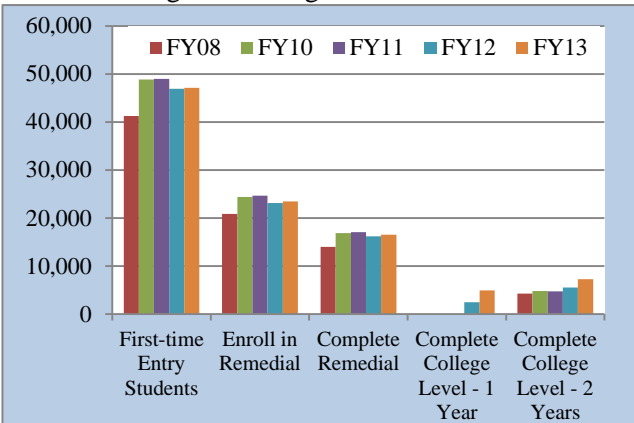


Fig. 1. Enrollment and Success in Remedial Education at Illinois Community Colleges, FY 2008 and FY 2010 - 2013

One-half of first-time students entering in Fall 2012 (FY 13) were enrolled in remedial coursework (23,473/47,139 = 49.8%). More than two-thirds of first-time students who enrolled in remedial courses completed the remedial courses (16,563/23,473 = 70.6%). One in five first-time students who enrolled in a remedial course completed a college-level course in the same subject within 2 academic years (7,301/23,473 = 31.1%).

From FY 2012 to FY 2013 the number of first-time entry students increased 0.4% (+192). The number of first-time students enrolling in remedial courses increased 1.3% (+312), while the percentage of students enrolling increased 0.5%. The number of first-time students completing remedial courses increased 1.8% (+316), and the percentage of students completing increased 0.3%. For first-time students enrolled in remedial coursework who completed a college-level course in the same subject within two academic years the number of students increased 32.0%, and the percentage of students increased 7.2%.

Among the participating CCA states the percentage of first-time students enrolling in remediation at two-year colleges was 51.7%. Of those, 22.3% complete remediation and associated college level courses in two years ([Game Changer State Data](#), 2013).

Detailed comparative data from participating states are available for select metrics through *Complete College America's Game Changer State Data* [webpage](#). Out of 33 states that are currently part of CCA's alliance, Illinois is one of 28 states that provided data in 2013. For more information on the Illinois Community College System please see the [Research & Policy Studies section](#) of the ICCB [website](#).

