

ILLINOIS COMMUNITY COLLEGE BOARD

FALL 2013 OPENING ENROLLMENT SURVEY RESULTS

Statewide Results. Overall, Illinois Community College System opening Fall 2013 enrollments are slightly down compared to last fall. These opening enrollments reflect the end of the regular fall registration period which is usually the 10th day of class. Fall 2013 enrollments show a decrease in headcount (-2.2 percent) and a decrease in the number of Full-time Equivalent (-1.8 percent) enrollments compared to last year. The Illinois Community College System experienced record-level Fall enrollments the previous four years with peak headcount enrollment in Fall 2009. The Fall 2013 headcount enrollments and Full-time Equivalent (FTE) enrollments reflect the return to pre-recession enrollment levels.

Systemwide, 350,852 students enrolled at Illinois Community Colleges in credit coursework in Fall 2013. The number of students enrolling in credit courses at Illinois community colleges as of the end of regular registration for Fall 2013 is 7,710 less than in Fall 2012.

Table 1 provides system wide comparative fall census enrollment counts for the last five years. Statewide opening headcount enrollments decreased for the fourth consecutive year while this year's statewide opening FTE enrollments decreased for the third consecutive year. Prior to the student population spike in Fall 2009, the Fall 2008 headcount enrollments were at 357,157 while Fall 2008 FTE enrollments were at 204,066.

**Table 1
SUMMARY OF OPENING FALL ENROLLMENT IN
ILLINOIS PUBLIC COMMUNITY COLLEGES FROM 2009 TO 2013**

	2009	2010	2011	2012	2013
Headcount	383,960	379,736	372,566	358,562	350,852
Percent Change	7.5%	-1.1%	-1.9%	-3.8%	-2.2%
FTE	224,021	224,676	217,674	208,508	204,722
Percent Change	9.8%	0.3%	-3.1%	-4.2%	-1.8%

Community colleges educate and train many part-time students. FTE figures reflect the total number of credit hours being taken by students divided by 15, which is the number of semester hours traditionally considered a full-time class load. The FTE enrollment was 204,722 in Fall 2013. Statewide FTE enrollments are down the equivalent of 3,786 full-time students (FTE -1.8 percent) from Fall 2012. While the latest Fall FTE enrollments are the lowest of the past five years, they are at the fifth highest level recorded.

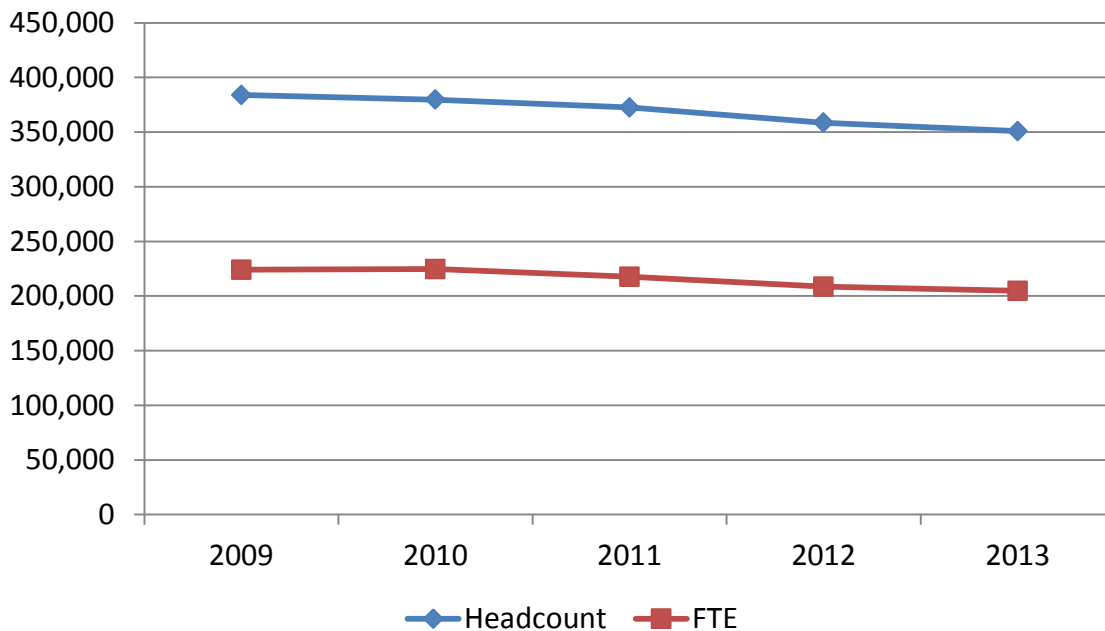


Figure 1: Opening Fall Headcount and FTE Enrollment, 2009-2013

These opening enrollments reflect the end of the regular fall registration period which is usually the 10th day of class. These preliminary counts are from the web-based Fall 2013 Enrollment Survey. Results are verified as the detailed Fall Enrollment (E1) data submissions are finalized.

Results by College. The externally attached Table 2 provides comparative information by college for Fall 2009 through 2013 headcount enrollments. A one-year comparison between Fall 2012 and Fall 2013 among the 48 community colleges shows that there are three colleges with enrollment decreases for every college that reported an enrollment gain. Thirty-two colleges reported headcount decreases of one percent or more. Ten colleges exhibited headcount enrollment increases of one percent or above. The remaining six colleges experienced little or no change (less than one percent).

The externally attached Table 3 provides college level comparative data on FTE enrollments for the most recent five-year period. Over the past year, FTE decreases are posted by 31 colleges, and 9 colleges reported increases. Eight colleges experienced little or no change in FTE.

Students in Correctional Facilities. Four Illinois community colleges furnished instructional services to correctional facilities during the Fall semester of both 2012 and 2013. The externally attached Table 4 provides a comparison of correctional and non-correctional 2012 and 2013 Fall headcount enrollment for each community college. In the latest data, there are 1,112 students in correctional facilities, which accounts for 0.3 percent of the statewide headcount. Proportionately this was similar to Fall 2012. An examination of only student enrollments in correctional facilities reveals a headcount increase of 6.1 percent (N = +64). **Non**-correctional headcount enrollment decreased (-2.2 percent, N = -7,774) from Fall 2012 to Fall 2013.

The externally attached Table 5 shows a comparison of FTE enrollment – correctional and non-correctional students – for Fall 2012 and Fall 2013 by community college. Students in correctional facilities accounted for 0.2 percent (N = 423) of the overall FTE enrollment in Fall 2013 which is proportionately similar to Fall 2012 (0.2 percent). An examination of only student enrollments in correctional facilities shows that incarcerated student FTE increased from last year (13.6 percent or N = +51 FTE) while the enrollment declined in **non**-correctional population enrollments (-1.8 percent or N = -3,836 FTE).

Online Enrollment by College. Online instruction is an important part of the delivery of instructional programs in the community college system. Fall 2013 is the sixth year that online enrollments have been reported from all colleges in the Opening Fall Enrollment Survey. The externally attached Tables 6 and 7 provide unduplicated and duplicated headcount online enrollment for Fall 2009 through Fall 2013. There are 97,841 duplicated online enrollments and 61,694 unduplicated online enrollments for Fall 2013. Duplicated online headcount enrollments increased 4.3 percent (+4,037) from Fall 2012. However, Fall 2013 unduplicated online enrollments decreased 2.0 percent with 1,280 fewer students than Fall 2012. Based on unduplicated beginning of term counts, in Fall 2013 online headcount enrollments (unduplicated) accounted for 17.6 percent of overall headcount enrollments which is identical to last year (17.6 percent).

Table 8 provides opening online FTE enrollments for Fall 2009 through Fall 2013. There are 19,367 online FTE enrollments in Fall 2013, which is a slight decrease over Fall 2012 (-0.7 percent or -133 FTE). In Fall 2013, online FTE enrollments accounted for 9.5 percent of overall opening FTE enrollments, which is a slight increase from Fall 2012 (9.4 percent).

Each of the Fall 2013 online enrollment counts – duplicated headcount, unduplicated headcount and FTE -- are at least two percent above their corresponding 5-year

average. FTE is nearly 6 percent above its 5-year average.

Additional Background. Fall opening enrollment information for credit-generating students are recorded by the colleges at the end of the regular fall registration period, which is typically the 10th day of class. Opening fall enrollment data are gathered from postsecondary institutions nationwide. Historically, these counts provide a "snapshot" of opening fall term enrollment for year-to-year and institution-to-institution comparisons. The diversity of the community college system and its students is not fully captured in these opening enrollment snapshot data. Community college flexible scheduling (e.g., modules, other intensive late start classes, etc.) is necessary to accommodate student schedules and compete successfully in the marketplace. Hence, enrollment trends are more fully captured through use of annual data.