

ILLINOIS COMMUNITY COLLEGE BOARD

FALL 2012 OPENING ENROLLMENT SURVEY RESULTS

Statewide Results. Fall 2012 enrollments continue to reflect a strong demand in courses offered by Illinois community colleges. For Fall 2012, headcount enrollments are at their twelfth highest level in over a quarter of a century, and full-time equivalent (FTE) enrollments are at their fourth highest level over the same time period. After experiencing record-level growth in Fall 2009, Illinois community college enrollments are beginning to return to pre-recession levels.

Systemwide at the beginning of Fall 2012, there were 358,294 students enrolled at Illinois Community Colleges in credit coursework. The number of students enrolling in credit courses at Illinois community colleges as of the end of regular registration for Fall 2012 was 14,272 fewer (-3.8 percent) than in Fall 2011. Statewide Fall 2012 headcount enrollments are below the five year average Fall headcount but are slightly higher than Fall 2008.

Table 1 provides system wide comparative fall census enrollment counts for the last five years. Statewide opening headcount enrollments decreased for the third consecutive year while this year's statewide opening FTE enrollments decreased for the second consecutive year.

Table 1
SUMMARY OF OPENING FALL ENROLLMENT IN
ILLINOIS PUBLIC COMMUNITY COLLEGES FROM 2008 TO 2012

	2008	2009	2010	2011	2012
Headcount	357,157	383,960	379,736	372,566	358,294
Percent Change	2.8%	7.5%	-1.1%	-1.9%	-3.8%
FTE	204,066	224,021	224,676	217,674	208,742
Percent Change	3.3%	9.8%	0.3%	-3.1%	-4.1%

Community colleges educate and train many part-time students. FTE figures reflect the total number of credit hours being taken by students divided by 15, which is the number of semester hours traditionally considered a full-time class load. The Full-time Equivalent (FTE) enrollment was 208,742 in Fall 2012. Statewide FTE enrollments are

down the equivalent of 8,932 full-time students (FTE -4.1 percent) from Fall 2011. The latest Fall FTE enrollments are below the five year average Fall FTE but are slightly higher than Fall 2008.

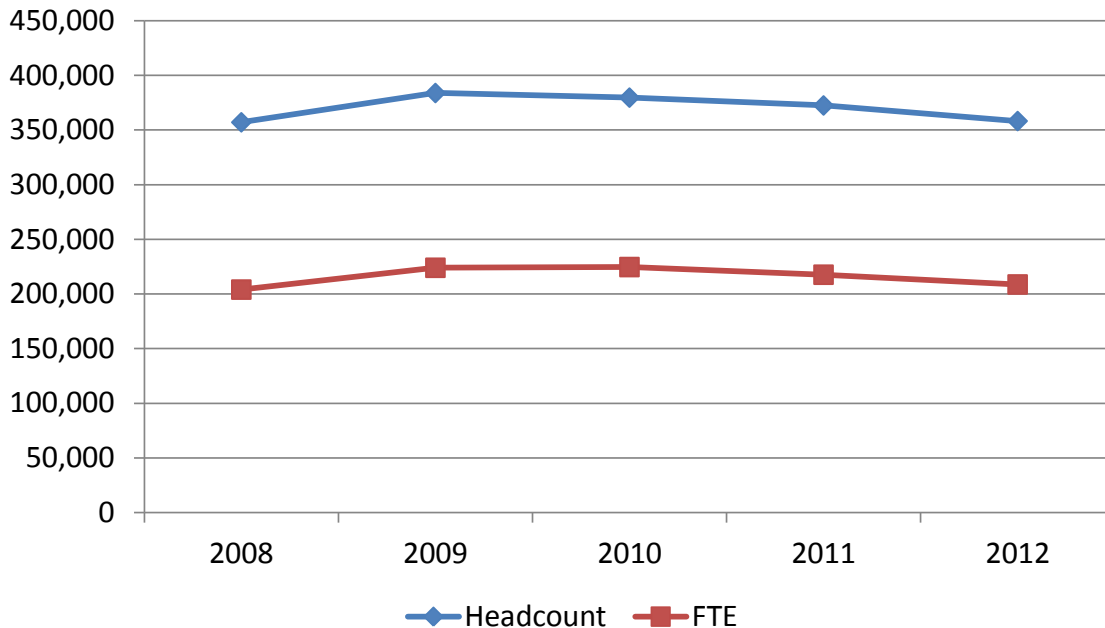


Figure 1: Opening Fall Headcount and FTE Enrollment, 2008-2012

These opening enrollments reflect the end of the regular fall registration period which is usually the 10th day of class. These preliminary counts are from the web-based Fall 2012 Enrollment Survey. Results are verified as the detailed Fall Enrollment (E1) data submissions are finalized.

Results by College. The externally attached Table 2 provides comparative information by college for Fall 2008 through 2012 headcount enrollments. A one-year comparison between Fall 2011 and Fall 2012 among the 48 community colleges shows that there were three colleges with enrollment decreases for every college that reported an enrollment gain. Thirty-three colleges reported headcount decreases of one percent or more. Ten colleges exhibited headcount enrollment increases of one percent or above. The remaining five colleges experienced little or no change (less than one percent).

The externally attached Table 3 provides college level comparative data on FTE enrollments for the most recent five-year period. Over the past year, FTE decreases were posted by 35 colleges, and 8 colleges reported increases. Five colleges experienced little or no change in FTE.

Students in Correctional Facilities. Six Illinois community colleges furnished instructional services to correctional facilities during the Fall semester of both 2010 and 2012. The externally attached Table 4 provides a comparison of correctional and non-correctional 2011 and 2012 Fall headcount enrollment for each community college. In the latest data, there were 1,048 students in correctional facilities, which accounts for 0.3 percent of the statewide headcount. Proportionately this was down from Fall 2011. An examination of only student enrollments in correctional facilities reveals a headcount decrease of 68.9 percent (N = -2,318). **Non**-correctional headcount enrollment decreased (-3.2 percent, N = -11,954) from Fall 2011 to Fall 2012.

The externally attached Table 5 shows a comparison of FTE enrollment – correctional and non-correctional students – for Fall 2011 and Fall 2012 by community college. Students in correctional facilities accounted for 0.2 percent (N = 373) of the overall FTE enrollment in Fall 2012 which is proportionately lower than Fall 2011 (0.6 percent). An examination of only student enrollments in correctional facilities shows that incarcerated student FTE was lower than last year (-73.0 percent or N = -1,008 FTE) and outpaced the enrollment declines in **non**-correctional population enrollments (-3.7 percent or N = -7,923 FTE).

Online Enrollment by College. Online instruction is an important part of the delivery of instructional programs in the community college system. Fall 2012 is the fifth year that online enrollments have been reported from all colleges in the Opening Fall Enrollment Survey. The externally attached Tables 6 and 7 provide unduplicated and duplicated headcount online enrollment for Fall 2008 through Fall 2012. There were 93,121 duplicated online enrollments and 62,763 unduplicated online enrollments for Fall 2012. Duplicated online headcount enrollments increased 1.3 percent (+1,239) from Fall 2011. Similarly, Fall 2012 unduplicated online enrollments increased 4.4 percent with 2,667 more students than Fall 2011. Based on unduplicated beginning of term counts, in Fall 2012 online headcount enrollments (unduplicated) accounted for 17.5 percent of overall headcount enrollments which is higher than last year (16.1 percent).

Table 8 provides opening online FTE enrollments for Fall 2008 through Fall 2012. There were 20,955 online FTE enrollments in Fall 2012, which is an increase over Fall 2011 (+10.5 percent or +1,985 FTE). In Fall 2012, online FTE enrollments accounted for 10.0 percent of overall opening FTE enrollments, which is an increase from Fall 2011 (8.7 percent).

Each of the Fall 2012 online enrollment counts – duplicated headcount, unduplicated headcount and FTE -- are at least eight percent above their corresponding 5-year average. FTE is 16 percent above its 5-year average.

Additional Background. Fall opening enrollment information for credit-generating students are recorded by the colleges at the end of the regular fall registration period, which is typically the 10th day of class. Opening fall enrollment data are gathered from postsecondary institutions nationwide. Historically, these counts provide a "snapshot"

of opening fall term enrollment for year-to-year and institution-to-institution comparisons. The diversity of the community college system and its students is not fully captured in these opening enrollment snapshot data. Community college flexible scheduling (e.g., modules, other intensive late start classes, etc.) is necessary to accommodate student schedules and compete successfully in the marketplace. Hence, enrollment trends are more fully captured through use of annual data.

Illinois Community College Board
Table 2
COMPARISON OF FINAL FALL 2008 - 2011 OPENING HEADCOUNT ENROLLMENT
WITH FALL 2012 PRELIMINARY OPENING ENROLLMENT

Dist. No.	District/College	Fall 2008 Headcount	Fall 2009 Headcount	Fall 2010 Headcount	Fall 2011 Headcount	Fall 2012 Headcount	% Change 2008-2012	% Change 2011-2012
503	Black Hawk	6,179	6,267	6,677	6,403	6,360	2.9 %	-0.7 %
508	Chicago	(59,702)	(65,170)	(62,893)	(61,272)	(60,511)	(1.4)	(-1.2)
06	Daley	9,711	9,991	8,965	8,250	9,410	-3.1	14.1
01	Kennedy-King	6,873	7,180	6,366	6,241	6,235	-9.3	-0.1
03	Malcolm X	7,201	8,718	8,366	7,776	6,524	-9.4	-16.1
05	Olive-Harvey	4,063	4,777	4,868	4,617	5,001	23.1	8.3
04	Truman	11,835	13,174	12,947	12,702	11,925	0.8	-6.1
02	Washington	8,342	8,464	8,721	9,013	8,947	7.3	-0.7
07	Wilbur-Wright	11,677	12,866	12,660	12,673	12,469	6.8	-1.6
507	Danville	2,722	3,584	3,713	4,447 *	3,403	25.0	-23.5
502	DuPage	25,668	27,083	26,722	26,209	26,156	1.9	-0.2
509	Elgin	9,821	11,704	12,214 *	11,811 *	11,554	17.6	-2.2
512	Harper	15,250	15,711	16,060	16,007 *	14,657	-3.9	-8.4
540	Heartland	5,062	5,266	5,459 *	5,610 *	5,456	7.8	-2.7
519	Highland	2,183	2,455	2,419	2,222 *	2,066	-5.4	-7.0
514	Illinois Central	12,020	13,049	13,078	12,283 *	11,125	-7.4	-9.4
529	Illinois Eastern	(9,363)	(9,677)	(10,420)	(10,240)	(9,835)	(5.0)	(-4.0)
04	Frontier	2,364	2,009	2,171	2,194	2,597	9.9	18.4
01	Lincoln Trail	1,376	1,231	1,062	1,066	1,055	-23.3	-1.0
02	Olney Central	1,486	1,627	1,603	1,524	1,477	-0.6	-3.1
03	Wabash Valley	4,137	4,810	5,584	5,456	4,706	13.8	-13.7
513	Illinois Valley	4,231	4,529	4,507	4,355	3,944	-6.8	-9.4
525	Joliet	14,088	15,288	15,676	15,322	15,589	10.7	1.7
520	Kankakee	3,764	4,298	4,688	4,419 *	3,918	4.1	-11.3
501	Kaskaskia	5,066	5,337	5,391	5,286	5,104	0.8	-3.4
523	Kishwaukee	4,134	4,735	4,989 *	5,099 *	4,921	19.0	-3.5
532	Lake County	16,359	18,092	18,091	17,389	17,577	7.4	1.1
517	Lake Land	7,107	7,945	8,234 *	8,867	6,818 **	-4.1	-23.1
536	Lewis & Clark	8,016	8,179	8,406	8,451	8,483	5.8	0.4

Illinois Community College Board
Table 2
(Continued)
COMPARISON OF FINAL FALL 2008 - 2011 OPENING HEADCOUNT ENROLLMENT
WITH FALL 2012 PRELIMINARY OPENING ENROLLMENT

Dist. No.	District/College	Fall 2008 Headcount	Fall 2009 Headcount	Fall 2010 Headcount	Fall 2011 Headcount	Fall 2012 Headcount	% Change 2008-2012	% Change 2011-2012
526	Lincoln Land	6,659	7,677	7,602	7,337	7,193	8.0 %	-2.0 %
530	Logan	7,608	8,568	7,431 *	7,294	7,437	-2.2	2.0
528	McHenry	5,374	6,811	7,392	7,104	7,194	33.9	1.3
524	Moraine Valley	17,477	17,774	17,387	18,169	16,650	-4.7	-8.4
527	Morton	4,959	5,290	5,459	5,321	4,785	-3.5	-10.1
535	Oakton	10,747	12,087	11,837	11,175	11,402	6.1	2.0
505	Parkland	9,273	9,633	9,715	9,368	8,679	-6.4	-7.4
515	Prairie State	5,368	5,854	5,791	5,697	5,416	0.9	-4.9
521	Rend Lake	5,761	5,871	5,379 *	4,943 *	3,815	-33.8	-22.8
537	Richland	3,284	3,595	3,807	3,632	3,269	-0.5	-10.0
511	Rock Valley	8,072	8,659	8,849	8,628	8,312	3.0	-3.7
518	Sandburg	2,615	2,661	2,538	2,383	2,460	-5.9	3.2
506	Sauk Valley	2,393	2,504	2,491	2,504	2,230	-6.8	-10.9
531	Shawnee	2,388	2,834	2,359	2,209	2,070	-13.3	-6.3
510	South Suburban	7,989	7,279	6,397 *	6,717 *	6,211	-22.3	-7.5
533	Southeastern	2,766	2,941 *	2,356	2,138 *	2,087	-24.5	-2.4
522	Southwestern	14,308	14,440	13,221	12,779	11,938	-16.6	-6.6
534	Spoon River	2,124	2,118	1,906	1,966	1,883	-11.3	-4.2
504	Triton	15,547	15,706	15,253	14,403	13,938	-10.3	-3.2
516	Waubonsee	9,307	10,532	10,428 *	10,717 *	11,676	25.5	8.9
539	Wood	2,403	2,757	2,501 *	2,390	2,172	-9.6	-9.1
TOTALS/AVERAGES		357,157	383,960	379,736	372,566	358,294	0.3 %	-3.8 %

*Revised

** Decrease at Lake Land College due to change in registration process for DOC students.

SOURCE OF DATA: Fall Enrollment (E1) Data Submission and Fall Enrollment Survey

Illinois Community College Board
Table 3
COMPARISON OF FINAL FALL 2008 - 2011 OPENING FTE ENROLLMENT
WITH FALL 2012 PRELIMINARY OPENING FTE ENROLLMENT

Dist. No.	District/College	Fall 2008 FTE	Fall 2009 FTE	Fall 2010 FTE	Fall 2011 FTE	Fall 2012 FTE	% Change 2008-2012	% Change 2011-2012
503	Black Hawk	3,651	3,722	4,031	3,872	3,761	3.0 %	-2.9 %
508	Chicago	(35,480)	(39,469)	(39,934) *	(39,350)	(37,590)	(5.9)	(-4.5)
06	Daley	6,089	6,281	5,613	5,280	5,843	-4.0	10.7
01	Kennedy-King	4,298	4,585	4,271	4,300	4,252	-1.1	-1.1
03	Malcolm X	4,384	5,070	5,567	5,318	4,062	-7.4	-23.6
05	Olive-Harvey	2,612	3,238	3,408	3,265	3,229	23.6	-1.1
04	Truman	6,319	7,275	7,782	7,650	6,528	3.3	-14.7
02	Washington	5,108	5,445	5,683	5,867	6,194	21.3	5.6
07	Wilbur-Wright	6,671	7,574	7,611	7,670	7,482	12.2	-2.5
507	Danville	1,676	2,137	2,266 *	2,106 *	1,938	15.6	-8.0
502	DuPage	14,913	16,036	15,902	15,175	15,397	3.2	1.5
509	Elgin	5,616	6,666	7,009	6,862 *	6,757	20.3	-1.5
512	Harper	9,187	9,526	9,765	9,513 *	8,792	-4.3	-7.6
540	Heartland	3,156	3,395	3,508 *	3,632 *	3,459	9.6	-4.8
519	Highland	1,428	1,606	1,645	1,481 *	1,349	-5.5	-8.9
514	Illinois Central	7,030	7,855	7,763	7,193 *	6,451	-8.2	-10.3
529	Illinois Eastern	(3,845)	(4,016)	(3,846) *	(3,731)	(3,549)	(-7.7)	(-4.9)
04	Frontier	669	605	630	604	656	-2.0	8.6
01	Lincoln Trail	820	794	694	713	661	-19.3	-7.3
02	Olney Central	1,011	1,167	1,088	995	958	-5.3	-3.7
03	Wabash Valley	1,345	1,450	1,435	1,419	1,274	-5.3	-10.2
513	Illinois Valley	2,531	2,843	2,890	2,698 *	2,419	-4.4	-10.3
525	Joliet	8,571	9,420	9,801 *	9,617	9,431	10.0	-1.9
520	Kankakee	2,185	2,583	2,767 *	2,714	2,403	10.0	-11.5
501	Kaskaskia	2,751	3,188	3,176	3,005	2,981	8.4	-0.8
523	Kishwaukee	2,633	3,074	3,275 *	3,292 *	3,126	18.7	-5.0
532	Lake County	8,915	9,922	9,975	9,498	9,551	7.1	0.6
517	Lake Land	4,311	4,852	4,990	4,996	3,949 **	-8.4	-21.0
536	Lewis & Clark	4,205	4,391	4,598	4,457	4,315	2.6	-3.2

Illinois Community College Board
Table 3
(Continued)
COMPARISON OF FINAL FALL 2008 - 2011 OPENING FTE ENROLLMENT
WITH FALL 2012 PRELIMINARY OPENING FTE ENROLLMENT

Dist. No.	District/College	Fall 2008 FTE	Fall 2009 FTE	Fall 2010 FTE	Fall 2011 FTE	Fall 2012 FTE	% Change 2008-2012	% Change 2011-2012
526	Lincoln Land	4,156	4,740	4,880	4,630	4,555	9.6	-1.6 %
530	Logan	3,599	3,876	3,567	3,200	3,347	-7.0	4.6
528	McHenry	3,263	4,222	4,261	3,988 *	4,274	31.0	7.2
524	Moraine Valley	10,360	10,849	10,846	10,680	10,226	-1.3	-4.3
527	Morton	2,424	2,803	2,935	2,957	2,685	10.8	-9.2
535	Oakton	5,772	6,277	6,307	5,978 *	5,971	3.5	-0.1
505	Parkland	5,811	6,237	5,607	5,501	5,501	-5.3	0.0
515	Prairie State	3,001	3,478	3,557	3,496	3,249	8.3	-7.1
521	Rend Lake	2,601	2,707	2,705 *	2,475 *	2,127	-18.2	-14.1
537	Richland	1,793	2,077	2,154 *	2,035	1,817	1.4	-10.7
511	Rock Valley	4,951	5,333	5,695	5,428	5,240	5.8	-3.5
518	Sandburg	1,600	1,716	1,643	1,537	1,580	-1.3	2.8
506	Sauk Valley	1,489	1,671	1,668	1,577	1,470	-1.3	-6.8
531	Shawnee	1,375	1,667	1,455	1,315	1,041	-24.3	-20.8
510	South Suburban	4,024	4,185	3,509 *	4,018 *	3,635	-9.7	-9.5
533	Southeastern	1,494	1,386 *	1,240	1,147 *	1,141	-23.6	-0.5
522	Southwestern	8,062	8,375	8,215	7,896	7,437	-7.7	-5.8
534	Spoon River	1,197	1,224	1,180	1,138 *	1,068	-10.8	-6.1
504	Triton	8,351	8,904	8,440 *	7,946 *	7,639	-8.5	-3.9
516	Waubensee	5,061	5,768	5,961	5,925	6,031	19.2	1.8
539	Wood	1,599	1,824	1,706	1,618	1,490	-6.8	-7.9
TOTALS/AVERAGES		204,066	224,021	224,676	217,674	208,742	2.3 %	-4.1 %

*Revised

** Decrease at Lake Land College due to change in registration process for DOC students.

SOURCE OF DATA: Fall Enrollment (E1) Data Submission and Fall Enrollment Survey

Illinois Community College Board

Table 4

**SUMMARY COMPARISON OF CORRECTIONAL AND NONCORRECTIONAL OPENING HEADCOUNT ENROLLMENT
FINAL FALL 2011 - PRELIMINARY FALL 2012**

Dist. No.	District/College	Noncorrectional Headcount			Correctional Headcount			Total Headcount		
		Fall 2011	Fall 2012	% Change	Fall 2011	Fall 2012	% Change	Fall 2011	Fall 2012	% Change
503	Black Hawk	6,403	6,360	-0.7 %	0	0	---- %	6,403	6,360	-0.7 %
508	Chicago	(61,272)	(60,511)	(-1.2)	(0)	(0)	(----)	(61,272)	(60,511)	(-1.2)
06	Daley	8,250	9,410	14.1	0	0	----	8,250	9,410	14.1
01	Kennedy-King	6,241	6,235	-0.1	0	0	----	6,241	6,235	-0.1
03	Malcolm X	7,776	6,524	-16.1	0	0	----	7,776	6,524	-16.1
05	Olive-Harvey	4,617	5,001	8.3	0	0	----	4,617	5,001	8.3
04	Truman	12,702	11,925	-6.1	0	0	----	12,702	11,925	-6.1
02	Washington	9,013	8,947	-0.7	0	0	----	9,013	8,947	-0.7
07	Wilbur-Wright	12,673	12,469	-1.6	0	0	----	12,673	12,469	-1.6
507	Danville	4,187	3,184	-24.0	260	219	-15.8	4,447 *	3,403	-23.5
502	DuPage	26,209	26,156	-0.2	0	0	----	26,209	26,156	-0.2
509	Elgin	11,811	11,554	-2.2	0	0	----	11,811 *	11,554	-2.2
512	Harper	16,007	14,657	-8.4	0	0	----	16,007 *	14,657	-8.4
540	Heartland	5,610	5,456	-2.7	0	0	----	5,610 *	5,456	-2.7
519	Highland	2,222	2,066	-7.0	0	0	----	2,222 *	2,066	-7.0
514	Illinois Central	12,283	11,108	-9.6	0	17	----	12,283 *	11,125	-9.4
529	Illinois Eastern	(10,240)	(9,835)	(-4.0)	(0)	(0)	(----)	(10,240)	(9,835)	(-4.0)
04	Frontier	2,194	2,597	18.4	0	0	----	2,194	2,597	18.4
01	Lincoln Trail	1,066	1,055	-1.0	0	0	----	1,066	1,055	-1.0
02	Olney Central	1,524	1,477	-3.1	0	0	----	1,524	1,477	-3.1
03	Wabash Valley	5,456	4,706	-13.7	0	0	----	5,456	4,706	-13.7
513	Illinois Valley	4,355	3,944	-9.4	0	0	----	4,355	3,944	-9.4
525	Joliet	15,322	15,589	1.7	0	0	----	15,322	15,589	1.7
520	Kankakee	4,419	3,918	-11.3	0	0	----	4,419 *	3,918	-11.3
501	Kaskaskia	5,235	4,987	-4.7	51	117	129.4	5,286	5,104	-3.4
523	Kishwaukee	5,099	4,921	-3.5	0	0	----	5,099 *	4,921	-3.5
532	Lake County	17,389	17,577	1.1	0	0	----	17,389	17,577	1.1
517	Lake Land	6,260	6,307	0.8	2,607	511	-80.4 **	8,867	6,818	-23.1
536	Lewis & Clark	8,451	8,483	0.4	0	0	----	8,451	8,483	0.4

Illinois Community College Board

Table 4

(Continued)

**SUMMARY COMPARISON OF CORRECTIONAL AND NONCORRECTIONAL OPENING HEADCOUNT ENROLLMENT
FINAL FALL 2011 - PRELIMINARY FALL 2012**

Dist. No.	District/College	Noncorrectional Headcount			Correctional Headcount			Total Headcount		
		Fall 2011	Fall 2012	% Change	Fall 2011	Fall 2012	% Change	Fall 2011	Fall 2012	% Change
526	Lincoln Land	7,337	7,193	-2.0 %	0	0	----	7,337	7,193	-2.0 %
530	Logan	7,294	7,437	2.0	0	0	----	7,294	7,437	2.0
528	McHenry	7,104	7,194	1.3	0	0	----	7,104	7,194	1.3
524	Moraine Valley	18,169	16,650	-8.4	0	0	----	18,169	16,650	-8.4
527	Morton	5,321	4,785	-10.1	0	0	----	5,321	4,785	-10.1
535	Oakton	11,175	11,402	2.0	0	0	----	11,175	11,402	2.0
505	Parkland	9,368	8,679	-7.4	0	0	----	9,368	8,679	-7.4
515	Prairie State	5,697	5,416	-4.9	0	0	----	5,697	5,416	-4.9
521	Rend Lake	4,808	3,815	-20.7	135	0	-100.0	4,943 *	3,815	-22.8
537	Richland	3,347	3,107	-7.2	285	162	-43.2	3,632	3,269	-10.0
511	Rock Valley	8,628	8,312	-3.7	0	0	----	8,628	8,312	-3.7
518	Sandburg	2,383	2,460	3.2	0	0	----	2,383	2,460	3.2
506	Sauk Valley	2,504	2,230	-10.9	0	0	----	2,504	2,230	-10.9
531	Shawnee	2,190	2,058	-6.0	19	12	-36.8	2,209	2,070	-6.3
510	South Suburban	6,717	6,211	-7.5	0	0	----	6,717 *	6,211	-7.5
533	Southeastern	2,129 *	2,077	-2.4	9	10	11.1	2,138 *	2,087	-2.4
522	Southwestern	12,779	11,938	-6.6	0	0	----	12,779	11,938	-6.6
534	Spoon River	1,966	1,883	-4.2	0	0	----	1,966	1,883	-4.2
504	Triton	14,403	13,938	-3.2	0	0	----	14,403	13,938	-3.2
516	Waubonsee	10,717	11,676	8.9	0	0	----	10,717 *	11,676	8.9
539	Wood	2,390	2,172	-9.1	0	0	----	2,390	2,172	-9.1
TOTALS/AVERAGES		369,200	357,246	-3.2 %	3,366	1,048	-68.9 %	372,566	358,294	-3.8 %

*Revised

** Decrease at Lake Land College due to change in registration process for DOC students.

SOURCE OF DATA: Fall Enrollment Surveys

Illinois Community College Board

Table 5

**SUMMARY COMPARISON OF CORRECTIONAL AND NONCORRECTIONAL OPENING FTE ENROLLMENT
FINAL FALL 2011 - PRELIMINARY FALL 2012**

Dist. No.	District/College	Noncorrectional FTE			Correctional FTE			Total FTE		
		Fall 2011	Fall 2012	% Change	Fall 2011	Fall 2012	% Change	Fall 2011	Fall 2012	% Change
503	Black Hawk	3,872	3,761	-2.9 %	0	0	---- %	3,872	3,761	-2.9 %
508	Chicago	(39,350)	(37,590)	(-4.5)	(0)	(0)	(----)	(39,350)	(37,590)	(-4.5)
06	Daley	5,280	5,843	10.7	0	0	----	5,280	5,843	10.7
01	Kennedy-King	4,300	4,252	-1.1	0	0	----	4,300	4,252	-1.1
03	Malcolm X	5,318	4,062	-23.6	0	0	----	5,318	4,062	-23.6
05	Olive-Harvey	3,265	3,229	-1.1	0	0	----	3,265	3,229	-1.1
04	Truman	7,650	6,528	-14.7	0	0	----	7,650	6,528	-14.7
02	Washington	5,867	6,194	5.6	0	0	----	5,867	6,194	5.6
07	Wilbur-Wright	7,670	7,482	-2.5	0	0	----	7,670	7,482	-2.5
507	Danville	2,019	1,860	-7.9	87	78	-10.3	2,106 *	1,938	-8.0
502	DuPage	15,175	15,397	1.5	0	0	----	15,175	15,397	1.5
509	Elgin	6,862	6,757	-1.5	0	0	----	6,862 *	6,757	-1.5
512	Harper	9,513	8,792	-7.6	0	0	----	9,513 *	8,792	-7.6
540	Heartland	3,632	3,459	-4.8	0	0	----	3,632 *	3,459	-4.8
519	Highland	1,481	1,349	-8.9	0	0	----	1,481 *	1,349	-8.9
514	Illinois Central	7,193	6,439	-10.5	0	11.6	----	7,193 *	6,451	-10.3
529	Illinois Eastern	(3,731)	(3,549)	(-4.9)	(0)	(0)	(----)	(3,731)	(3,549)	(-4.9)
04	Frontier	604	656	8.6	0	0	----	604	656	8.6
01	Lincoln Trail	713	661	-7.3	0	0	----	713	661	-7.3
02	Olney Central	995	958	-3.7	0	0	----	995	958	-3.7
03	Wabash Valley	1,419	1,274	-10.2	0	0	----	1,419	1,274	-10.2
513	Illinois Valley	2,698	2,419	-10.3	0	0	----	2,698 *	2,419	-10.3
525	Joliet	9,617	9,431	-1.9	0	0	----	9,617	9,431	-1.9
520	Kankakee	2,714	2,403	-11.5	0	0	----	2,714	2,403	-11.5
501	Kaskaskia	2,977	2,919	-1.9	27.87	61.56	120.9	3,005	2,981	-0.8
523	Kishwaukee	3,292	3,126	-5.0	0	0	----	3,292 *	3,126	-5.0
532	Lake County	9,498	9,551	0.6	0	0	----	9,498	9,551	0.6
517	Lake Land	3,884	3,784	-2.6	1112.1	165.2	-85.1 **	4,996	3,949	-21.0
536	Lewis & Clark	4,457	4,315	-3.2	0	0	----	4,457	4,315	-3.2

Illinois Community College Board
Table 5
SUMMARY COMPARISON OF CORRECTIONAL AND NONCORRECTIONAL OPENING FTE ENROLLMENT
FINAL FALL 2011 - PRELIMINARY FALL 2012

Dist. No.	District/College	Noncorrectional FTE			Correctional FTE			Total FTE		
		Fall 2011	Fall 2012	% Change	Fall 2011	Fall 2012	% Change	Fall 2011	Fall 2012	% Change
526	Lincoln Land	4,630	4,555	-1.6 %	0	0	----	4,630	4,555	-1.6 %
530	Logan	3,200	3,347	4.6	0	0	----	3,200	3,347	4.6
528	McHenry	3,988	4,274	7.2	0	0	----	3,988 *	4,274	7.2
524	Moraine Valley	10,680	10,226	-4.3	0	0	----	10,680	10,226	-4.3
527	Morton	2,957	2,685	-9.2	0	0	----	2,957	2,685	-9.2
535	Oakton	5,978	5,971	-0.1	0	0	----	5,978 *	5,971	-0.1
505	Parkland	5,501	5,501	0.0	0	0	----	5,501	5,501	0.0
515	Prairie State	3,496	3,249	-7.1	0	0	----	3,496	3,249	-7.1
521	Rend Lake	2,423	2,127	-12.2	52	0	-100.0	2,475 *	2,127	-14.1
537	Richland	1,939	1,765	-9.0	96	52.2	-45.6	2,035	1,817	-10.7
511	Rock Valley	5,428	5,240	-3.5	0	0	----	5,428	5,240	-3.5
518	Sandburg	1,537	1,580	2.8	0	0	----	1,537	1,580	2.8
506	Sauk Valley	1,577	1,470	-6.8	0	0	----	1,577	1,470	-6.8
531	Shawnee	1,310	1,037	-20.8	5	4	-20.0	1,315	1,041	-20.8
510	South Suburban	4,018	3,635	-9.5	0	0	----	4,018 *	3,635	-9.5
533	Southeastern	1,146	1,141	-0.5	1	0	-100.0	1,147 *	1,141	-0.5
522	Southwestern	7,896	7,437	-5.8	0	0	----	7,896	7,437	-5.8
534	Spoon River	1,138	1,068	-6.1	0	0	----	1,138 *	1,068	-6.1
504	Triton	7,946	7,639	-3.9	0	0	----	7,946 *	7,639	-3.9
516	Waubonsee	5,925	6,031	1.8	0	0	----	5,925	6,031	1.8
539	Wood	1,618	1,490	-7.9	0	0	----	1,618	1,490	-7.9
TOTALS/AVERAGES		216,293	208,369	-3.7 %	1,381	373	-73.0 %	217,674	208,742	-4.1 %

*Revised

** Decrease at Lake Land College due to change in registration process for DOC students.

SOURCE OF DATA: Fall Enrollment Submission (E1) and Survey

Illinois Community College Board
Table 6
PRELIMINARY OPENING UNDUPLICATED ONLINE ENROLLMENT
FALL 2008 - 2012

Dist. No.	District/College	Fall 2008 Unduplicated	Fall 2009 Unduplicated	Fall 2010 Unduplicated	Fall 2011 Unduplicated	Fall 2012 Unduplicated	% Change 2008-2012	% Change 2011-2012
503	Black Hawk	1,084	1,122	1,301	1,359	1,341	23.7 %	-1.3 %
508	Chicago	(3,719)	(3,457)	(3,868)	(4,619)	(4,935)	(32.7)	(6.8)
06	Daley	382	386	420	518	622	62.8	20.1
01	Kennedy-King	320	348	401	451	487	52.2	8.0
03	Malcolm X	336	336	417	495	593	76.5	19.8
05	Olive-Harvey	228	292	318	380	412	80.7	8.4
04	Truman	394	555	641	801	719	82.5	-10.2
02	Washington	964	932	993	1,056	1,297	34.5	22.8
07	Wilbur-Wright	1,095	608	678	918	805	-26.5	-12.3
507	Danville	757	914	937	949	911	20.3	-4.0
502	DuPage	2,766	3,775	4,467	4,641	5,312	92.0	14.5
509	Elgin	913	1,807	1,683	1,339	1,767	93.6	32.0
512	Harper	1,371 *	2,143	4,279	3,606	1,807	31.8	-49.9
540	Heartland	735	1,028	1,013	1,201	1,356	84.5	12.9
519	Highland	311	396	570	506	582	87.1	15.0
514	Illinois Central	2,354	2,556	2,634	2,602	4,107	74.5	57.8
529	Illinois Eastern	(1,072)	(1,234)	(1,433)	(1,046)	(896)	(-16.4)	(-14.3)
04	Frontier	98	93	122	105	141	43.9	34.3
01	Lincoln Trail	318	363	502	385	332	4.4	-13.8
02	Olney Central	432	529	573	418	341	-21.1	-18.4
03	Wabash Valley	224	249	236	138	82	-63.4	-40.6
513	Illinois Valley	429	654	651	642	719	67.6	12.0
525	Joliet	1,635	2,109	2,651	2,885	3,152	92.8	9.3
520	Kankakee	655	848	943	876	823	25.6	-6.1
501	Kaskaskia	1,387	1,601	1,749	1,739	1,880	35.5	8.1
523	Kishwaukee	1,206	1,286	1,277	1,278	1,244	3.2	-2.7
532	Lake County	2,355 *	2,472	2,836	2,788	2,856	21.3	2.4
517	Lake Land	700	1,866	1,949	1,729	1,761	151.6	1.9
536	Lewis & Clark	1,552	1,518	1,575	1,119	888	-42.8	-20.6

Illinois Community College Board
Table 6
(Continued)
PRELIMINARY OPENING UNDUPLICATED ONLINE ENROLLMENT
FALL 2008 - 2012

Dist. No.	District/College	Fall 2008 Unduplicated	Fall 2009 Unduplicated	Fall 2010 Unduplicated	Fall 2011 Unduplicated	Fall 2012 Unduplicated	% Change 2008-2012	% Change 2011-2012
526	Lincoln Land	1,426	1,620	1,651	1,642	1,761	23.5 %	7.2 %
530	Logan	1,308	1,413	1,438	1,511	2,012	53.8	33.2
528	McHenry	814	1,167	1,142	662	1,161	42.6	75.4
524	Moraine Valley	1,822	2,033	2,010	2,038	2,100	15.3	3.0
527	Morton	185	279	385	363	344	85.9	-5.2
535	Oakton	1,253	1,544	1,743	1,897	2,112	68.6	11.3
505	Parkland	2,663	3,154	3,150	2,842	2,822	6.0	-0.7
515	Prairie State	582	702	736	706	776	33.3	9.9
521	Rend Lake	431	437	572	634	624	44.8	-1.6
537	Richland	715	795	881	880	800	11.9	-9.1
511	Rock Valley	687	760	1,007	989	874	27.2	-11.6
518	Sandburg	472	516	529	611	556	17.8	-9.0
506	Sauk Valley	459	550	617	596	624	35.9	4.7
531	Shawnee	368	401	393	433	412	12.0	-4.8
510	South Suburban	841	972	761	861	725	-13.8	-15.8
533	Southeastern	819	774	780	724	730	-10.9	0.8
522	Southwestern	1,417	1,671	1,970	1,996	2,104	48.5	5.4
534	Spoon River	410 **	411 **	490 **	462	509	24.1	10.2
504	Triton	1,804	2,153	2,267	2,151	1,977	9.6	-8.1
516	Waubonsee	2,018	2,399	2,489	2,466	2,617	29.7	6.1
539	Wood	520	607	570	708	786	51.2	11.0
TOTALS/AVERAGES		46,015	55,144	61,397	60,096	62,763	36.4 %	4.4 %

* Estimated

**Modified by College

SOURCE OF DATA: Fall Enrollment Survey

Illinois Community College Board
Table 7
PRELIMINARY OPENING DUPLICATED ONLINE ENROLLMENT
FALL 2008 - 2012

Dist. No.	District/College	Fall 2008 Duplicated	Fall 2009 Duplicated	Fall 2010 Duplicated	Fall 2011 Duplicated	Fall 2012 Duplicated	% Change 2008-2012	% Change 2011-2012
503	Black Hawk	1,555 *	1,686	2,122	2,309	2,198	41.4 %	-4.8 %
508	Chicago	(5,871)	(5,565)	(6,074)	(7,451)	(8,095)	(37.9)	(8.6)
06	Daley	653	619	671	831	1,003	53.6	20.7
01	Kennedy-King	555	625	640	760	840	51.4	10.5
03	Malcolm X	534	531	639	800	913	71.0	14.1
05	Olive-Harvey	385	462	509	656	733	90.4	11.7
04	Truman	604	867	964	1,299	1,168	93.4	-10.1
02	Washington	1,607	1,495	1,569	1,705	2,159	34.3	26.6
07	Wilbur-Wright	1,533	966	1,082	1,400	1,279	-16.6	-8.6
507	Danville	1,220	1,466	1,517	1,610	1,583	29.8	-1.7
502	DuPage	4,045	5,819	7,186	7,536	8,801	117.6	16.8
509	Elgin	1,309	2,487	3,237	1,850	2,691	105.6	45.5
512	Harper	1,822	3,035	4,281	2,546	2,590	42.2	1.7
540	Heartland	1,029	1,409	1,390	1,744	2,013	95.6	15.4
519	Highland	460	557	854	810	858	86.5	5.9
514	Illinois Central	3,270	3,619	3,785	3,801	2,693	-17.6	-29.2
529	Illinois Eastern	(1,290)	(1,557)	(1,813)	(1,310)	(1,091)	(-15.4)	(-16.7)
04	Frontier	104	97	129	108	143	37.5	32.4
01	Lincoln Trail	366	436	623	463	393	7.4	-15.1
02	Olney Central	565	748	813	599	464	-17.9	-22.5
03	Wabash Valley	255	276	248	140	91	-64.3	-35.0
513	Illinois Valley	596	922	923	941	1,044	75.2	10.9
525	Joliet	2,154	2,930	3,913	4,363	4,869	126.0	11.6
520	Kankakee	1,448	1,704	1,833	1,148	1,164	-19.6	1.4
501	Kaskaskia	2,674	3,229	3,609	3,403	3,544	32.5	4.1
523	Kishwaukee	1,886	2,139	2,044	2,167	2,129	12.9	-1.8
532	Lake County	3,377	3,644	4,161	4,066	4,127	22.2	1.5
517	Lake Land	1,549	3,410	3,692	3,346	3,513	126.8	5.0
536	Lewis & Clark	2,089	2,082	2,003	1,765	1,467	-29.8	-16.9

Illinois Community College Board
Table 7
(Continued)
PRELIMINARY OPENING DUPLICATED ONLINE ENROLLMENT
FALL 2008 - 2012

Dist. No.	District/College	Fall 2008 Duplicated	Fall 2009 Duplicated	Fall 2010 Duplicated	Fall 2011 Duplicated	Fall 2012 Duplicated	% Change 2008-2012	% Change 2011-2012
526	Lincoln Land	2,123	2,518	2,714	2,690	2,905	36.8 %	8.0 %
530	Logan	1,639	2,296	2,396	2,570	1,239	-24.4	-51.8
528	McHenry	1,139	1,601	1,600	1,881	1,489	30.7	-20.8
524	Moraine Valley	2,550	2,846	2,853	2,953	3,058	19.9	3.6
527	Morton	256	376	545	473	447	74.6	-5.5
535	Oakton	1,607	2,226	2,903	2,753	3,105	93.2	12.8
505	Parkland	4,119	4,904	4,909	4,457	4,452	8.1	-0.1
515	Prairie State	787	959	1,025	999	1,128	43.3	12.9
521	Rend Lake	506	522	843	932	914	80.6	-1.9
537	Richland	1,014	1,185	1,269	1,360	1,255	23.8	-7.7
511	Rock Valley	862	969	1,328	1,382	1,222	41.8	-11.6
518	Sandburg	688	864	761	890	887	28.9	-0.3
506	Sauk Valley	665	808	894	896	909	36.7	1.5
531	Shawnee	579	653	669	724	728	25.7	0.6
510	South Suburban	1,165	1,306	1,025	1,208	1,046	-10.2	-13.4
533	Southeastern	1,341	1,300	1,282	1,275	1,285	-4.2	0.8
522	Southwestern	2,032 *	2,196	2,880	3,018	3,156	55.3	4.6
534	Spoon River	604 **	624 **	798 **	752	776	28.5	3.2
504	Triton	2,800	3,230	3,544	3,388	3,116	11.3	-8.0
516	Waubonsee	3,144	3,830	4,105	4,063	4,349	38.3	7.0
539	Wood	760	872	889	1,052	1,185	55.9	12.6
TOTALS/AVERAGES		68,024	83,345	93,669	91,882	93,121	36.9 %	1.3 %

* Estimated

**Modified by College

SOURCE OF DATA: Fall Enrollment Survey

Illinois Community College Board
Table 8
PRELIMINARY OPENING ONLINE FTE ENROLLMENT
FALL 2008 - 2012

Dist. No.	District/College	Fall 2008 FTE	Fall 2009 FTE	Fall 2010 FTE	Fall 2011 FTE	Fall 2012 FTE	% Change 2008-2012	% Change 2011-2012
503	Black Hawk	322	321	407	437	420	30.2 %	-3.9 %
508	Chicago	(1,250)	(1,177)	(1,284)	(1,571)	(1,720)	(37.6)	(9.5)
	06 Daley	138	131	141	174	212	53.6	21.8
	01 Kennedy-King	118	133	136	160	177	50.0	10.6
	03 Malcolm X	109	113	136	169	195	78.9	15.4
	05 Olive-Harvey	81	98	109	139	157	93.8	12.9
	04 Truman	127	184	203	275	249	96.1	-9.5
	02 Washington	337	314	330	357	458	35.9	28.3
	07 Wilbur-Wright	340	204	229	297	272	-20.0	-8.4
507	Danville	245	295	305	325	322	31.4	-0.9
502	DuPage	833	1,197	1,489	1,568	3,367	304.3	114.8
509	Elgin	240	475	619	563	520	117.0	-7.6
512	Harper	343	584	816	699	498	45.1	-28.8
540	Heartland	210	287	286	358	419	99.7	17.3
519	Highland	79	92	142	133	143	80.7	8.1
514	Illinois Central	617	680	696	704	776	25.8	10.2
529	Illinois Eastern	(194)	(244)	(258)	(204)	(188)	(-3.0)	(-7.8)
	04 Frontier	11	10	15	13	13	18.2	0.0
	01 Lincoln Trail	46	61	71	66	69	50.0	4.5
	02 Olney Central	94	126	144	104	91	-3.4	-12.5
	03 Wabash Valley	43	47	28	21	15	-64.9	-28.6
513	Illinois Valley	114	182	176	176	195	70.9	11.1
525	Joliet	455	634	831	909	1,013	122.6	11.4
520	Kankakee	285	317	334	210	223	-21.7	6.2
501	Kaskaskia	471	566	549	565	579	23.1	2.5
523	Kishwaukee	358	402	385	407	402	12.4	-1.3
532	Lake County	687	729	845	828	840	22.3	1.4
517	Lake Land	540	657	721	639	668	23.7	4.7
536	Lewis & Clark	1,051	1,041	1,089	743	575	-45.3	-22.6

Illinois Community College Board
Table 8
(Continued)
PRELIMINARY OPENING ONLINE FTE ENROLLMENT
FALL 2008 - 2012

Dist. No.	District/College	Fall 2008 FTE	Fall 2009 FTE	Fall 2010 FTE	Fall 2011 FTE	Fall 2012 FTE	% Change 2008-2012	% Change 2011-2012
526	Lincoln Land	416	493	529	532	570	37.0 %	7.1 %
530	Logan	312	444	464	490	391	25.4	-20.2
528	McHenry	227	303	300	348	308	35.7	-11.5
524	Moraine Valley	520	573	567	590	598	15.0	1.4
527	Morton	49	60	92	87	85	73.5	-2.9
535	Oakton	293	428	558	559	623	112.6	11.4
505	Parkland	871	1,044	1,059	957	964	10.7	0.7
515	Prairie State	152	186	208	294	217	42.8	-26.2
521	Rend Lake	95	130	151	166	163	71.6	-1.8
537	Richland	216	240	265	284	516	138.9	81.7
511	Rock Valley	177	190	274	273	242	36.9	-11.4
518	Sandburg	134	163	148	173	175	30.7	1.1
506	Sauk Valley	128	159	175	176	179	39.8	1.7
531	Shawnee	108	119	121	131	136	26.0	3.8
510	South Suburban	220	246	203	232	215	-2.3	-7.6
533	Southeastern	261	257	240	244	251	-3.8	2.9
522	Southwestern	380	459	535	556	586	54.3	5.4
534	Spoon River	112	123 **	155 **	150	150	34.1	0.1
504	Triton	591	682	762	724	683	15.6	-5.7
516	Waubonsee	622	750	794	791	834	34.1	5.4
539	Wood	150	169	176	174	199	32.8	14.6
TOTALS/AVERAGES		14,327	17,096	19,008	18,970	20,955	46.3 %	10.5 %

**Modified by College

SOURCE OF DATA: Fall Enrollment Survey