



---

**DUAL CREDIT  
IN THE  
ILLINOIS COMMUNITY COLLEGE SYSTEM**

**FISCAL YEAR 2023**

---



***February 2024***

Compiled by ICCB

Nathan R. Wilson, Deputy Director for Research and Information Technology

Jay Brooks, Associate Deputy Director for Research and Analytics

Michelle Dufour, Director for Research and Analytics

Cecilia Elhaddad, Data Analyst

Mitchell Gaffney, Data Analyst

Jana Ferguson, Consultant, Data and Research Services

---

## TABLE OF CONTENTS

---

<b>Introduction .....</b>	<b>4</b>
<b>Dual Credit Definition and Legislative Background .....</b>	<b>5</b>
<b>Characteristics of Dual Credit Students (unduplicated).....</b>	<b>7</b>
<i>OVERALL HEADCOUNT .....</i>	<i>7</i>
<i>CHARACTERISTICS OF GENDER AND RACE/ETHNICITY .....</i>	<i>8</i>
<i>CREDIT HOURS ENROLLED BY DUAL CREDIT STUDENTS.....</i>	<i>9</i>
<i>GEOGRAPHIC REGION.....</i>	<i>10</i>
<b>Dual Credit Course Count and Enrollment (duplicated).....</b>	<b>10</b>
<i>OVERALL COURSE COUNT AND ENROLLMENT .....</i>	<i>10</i>
<i>TRANSFER VERSUS CAREER AND TECHNICAL EDUCATION .....</i>	<i>12</i>
<i>INSTRUCTIONAL SITE.....</i>	<i>15</i>
<b>Dual Credit Student Outcomes.....</b>	<b>15</b>
<i>GRADUATION RATE .....</i>	<i>15</i>
<i>ADVANCEMENT RATE .....</i>	<i>18</i>
<b>Bibliography .....</b>	<b>22</b>
<b>Appendix A.....</b>	<b>23</b>
<b>Appendix B .....</b>	<b>23</b>
<b>Appendix C .....</b>	<b>24</b>

**Suggested Citation:**

Illinois Community College Board. (2024). *Dual Credit in the Illinois Community College System in Fiscal Year 2023*. Springfield, IL: Author.

---

## INTRODUCTION

---

Dual credit instruction allows academically prepared high school students to simultaneously earn credits that count toward a high school diploma and a college degree. Dual credit instruction delivers a “win-win” arrangement for all parties: students gain access to challenging college-level coursework to make their junior and senior years of high school more productive; students can prove to others and themselves that they have the ability to succeed in college; college costs can be reduced for parents and students; time to degree at college can be shortened; and the enhanced high school and college faculty dialogue can contribute to a better alignment between secondary and postsecondary education. Consequently, as dual credit instruction has a positive impact on postsecondary completion, there is a growing emphasis among policy makers on the value of dual credit enrollment for all students and especially those who are traditionally underserved in higher education.

Highlights of Dual Credit in Fiscal Year 2023:

- In Illinois, during fiscal year 2023, a total of 82,602 individual (i.e., “unduplicated”) high school students enrolled in one or more community college dual credit courses.
- One in five students (20.1 percent) taking one or more Illinois community college credit courses was a high school dual credit student.
- Illinois community colleges offered a total of 14,638 dual credit courses in fiscal year 2023, which was an increase of 8.1 percent from the previous year (N = 13,543).
- Overall, in fiscal year 2023, dual credit duplicated (seat count) enrollment (N = 163,283) increased 11.5 percent compared to one year ago (N = 146,391).
- High school students that took dual credit courses have substantially higher community college graduation rates and advancement rates than those students that did not enroll in dual credit coursework.

Data for this report derive from the Illinois Community College Board’s (ICCB) Centralized Data System and, specifically, the Annual Student Enrollment and Completion (A1) student-level submission (Appendix A Tables) and Annual Course Data (AC) student-level submission (Appendix B Tables) from Illinois community colleges. Information from the **A1 submission** is used in the report to describe the characteristics of high school students who enrolled in dual credit courses. A1 data are required for all students who are officially enrolled in a credit course at an Illinois community college any time during the specified fiscal year. A1 enrollments are **unduplicated** end-of-year counts. Duplicated enrollment and course data derive from ICCB **AC submissions**. AC enrollments are **duplicated**, meaning students are counted for each course they enroll in (e.g., a student enrolling in three dual credit courses is counted as three enrollments). The AC record submission includes dual credit identifier information that is used to generate dual credit course counts, enrollments, and average class sizes. For Illinois community colleges, student-level data is collected by ICCB for each fiscal year. A fiscal year represents student activity in a July 1 through June 30 academic year. Data for the graduation rate outcomes come from the Fall Enrollment (E1), A1 and Summer Graduate Reporting for the Integrated Postsecondary Education Data System (IPEDS) Graduation Rate Survey (GS) Data. Data for the advancement rate outcomes come from the A1, E1, GS and National Student Clearinghouse (NSC).

---

## DUAL CREDIT DEFINITION AND LEGISLATIVE BACKGROUND

---

Dual credit is an instructional arrangement where an academically qualified high school student enrolls in a college-level course and, upon successful course completion, concurrently earns both college credit and high school credit. Dual credit reflects strong and well established secondary-to-postsecondary articulation and alignment.

The Dual Credit Quality Act ([Public Act 96-0194](#)) was approved by the governor on August 10, 2009, with an effective date of January 1, 2010. The Act required the ICCB and the Board of Higher Education (IBHE) to develop policies regarding dual credit. In 2018, the Dual Credit Quality Act was significantly amended outlining specific, required elements within dual credit partnership agreements and limiting out-of-state dual credit offerings. Although the general purpose of the Act remains the same, the Act gives school districts a greater ability to offer dual credit courses to students, as it requires a local community college to agree to offer such courses if a school district requests them. The law includes an “Illinois-first” clause that prohibits school districts from offering dual credit courses from out-of-state institutions without first asking an Illinois college if the same courses are offered there. The law helps to make college more affordable. The amended Dual Credit Quality Act ([Public Act 100-1049](#)) took effect January 1, 2019. Additionally, as part of the amended Dual Credit Quality Act and to advance dual credit in Illinois, ICCB and the Illinois State Board of Education (ISBE) established a committee and developed a [Model Partnership Agreement \(MPA\)](#) addressing the parameters of local school district-community college partnerships to offer dual credit (should the stakeholders not be able to reach agreement). The Agreement guides local partnerships between school districts and community colleges necessary for the successful implementation of quality dual credit courses and related student supports.

The instructors for dual credit courses shall be selected, employed, and evaluated by the postsecondary institution. Qualified instructors must hold the appropriate credentials and demonstrate teaching competencies. [The ICCB Administrative Rules](#) [Section 1501.507 (11)] outlines these minimally acceptable standards. Dual credit instructors must be able to participate in all activities available to adjunct faculty [[\(110 ILCS 27/\) Dual Credit Quality Act](#)]. ICCB, ISBE, and IBHE also collaborated to create a new endorsement for nine dual credit disciplines. A Dual Credit Endorsement, as designated by the amended Dual Credit Quality Act, is an endorsement valid for educators in grades 11-12 to be placed on the [Professional Educator License \(PEL\)](#) at the request of an instructor who meets the appropriate credential standards.

The Dual Credit Quality Act was amended via [Public Act 102-0516](#) on August 20, 2021, to require that within one year after the effective date (August 20, 2021), each community college district in partnership with the appropriate high schools, shall modify its dual credit plan to ensure access to dual credit courses by students with disabilities. The agreement shall provide that a student has access to the supplementary aids and accommodations included in the student's Individualized Education Program (IEP) while the student is accessing a dual credit course on a high school campus, in accordance with established practices at the high school, and a student who accesses a dual credit course on a community college campus has access to supplementary aids and accommodations provided in the partnership agreement, including access to the community college's disability services.

The amended Dual Credit Quality Act ([Public Act 102-0516](#)) further stipulated that each community college district shall provide access to higher education for students with disabilities, including, but not limited to, students with intellectual or developmental disabilities. Each community college is encouraged to offer for-credit and noncredit courses as deemed appropriate for the individual student based on the student's abilities, interests, and postsecondary transition goals, with the appropriate individualized supplementary aids and accommodations, including general education courses, career and technical education, vocational training, continuing education certificates, individualized learning paths, and life skills courses for students with disabilities. In addition, each community college is strongly encouraged to have its disability services coordinator participate in meetings held by high schools to provide information to the student's IEP team, including the student and the student's parents, about the community college and the availability of courses and programs at the community college.

Also taking effect on January 1, 2019, [Public Act 100-0792](#) amended the Illinois School Code by prohibiting a school board from capping the number of courses or credits a student can earn via dual credit if the courses are taught by an Illinois Instructor. Effective on January 1, 2022, [Public Act 102-0209](#) amended the accelerated placement language of the School Code. It states that for a student entering grade 12, the next most rigorous level of advanced coursework in English or mathematics shall be a dual credit course as defined in the Dual Credit Quality Act, an Advanced Placement course as defined in the College and Career Success for All Students Act, or an International Baccalaureate course. Under the current accelerated placement statute, no later than the beginning of the 2023-2024 school year, a school district's accelerated placement policy must allow for the automatic enrollment, in the following school term, of a student into the next most rigorous level of advanced coursework offered by the high school if the student meets or exceeds State standards in English language arts, mathematics, or science on a State assessment administered.

Similarly, [Public Act 101-0654](#) (known as the Education and Workforce Equity Act) requires by no later than the beginning of the 2023-2024 school year that each school district's accelerated placement policy include provisions for automatic enrollment, in the following school term, of a high school student into the next most rigorous level of advanced coursework. The next most rigorous level may include early college programs (dual credit, advanced placement, and international baccalaureate). The intent with the automatic enrollment approach is to allow even more equitable access and opportunity, regardless of student background, for advanced coursework including early college courses like dual credit.

Finally, [Public Act 102-1077](#), signed by the governor on June 10, 2022, amends the state's Dual Credit Quality Act to provide that a partnership agreement between a community college and a school district shall allow high school students who may not meet the community college's academic eligibility requirements to enroll in dual credit courses taught at the high school to receive high school credits. High schools are required to establish procedures to notify students enrolled in dual credit courses if they are eligible for both college and high school credits or just a high school credit.

On the national level, the growth of dual credit has prompted the National Center for Education Statistics (NCES) to adjust the Integrated Postsecondary Education Data System (IPEDS) collection beginning with the 2023-24 cycle. The new collection approach will allow NCES to provide information on dual credit and dual enrollment activity disaggregated by race/ethnicity and gender. NCES has indicated this new collection methodology will allow dually enrolled students to be distinguished from other students who are classified as non-degree/non-certificate students and provide a more comprehensive picture of the dual credit landscape across the country. NCES further justifies this adjustment by citing the growth in dually enrolled students and the potential implications for future college enrollment and credential/degree attainment as primary drivers for this adjustment. The information contained within this report for the Illinois Community College System is focused exclusively on dual credit activity where the students earn both high school and college credit and does not include activity that is dual enrollment where only college credit is earned. ICCB does have a longstanding collection of dually enrolled students within its Centralized Data System and is positioned well to submit the data on behalf of Illinois community colleges for NCES IPEDS reporting.

---

### CHARACTERISTICS OF DUAL CREDIT STUDENTS (UNDUPLICATED)

---

#### OVERALL HEADCOUNT

The Illinois Community College System recorded a total of 82,602 high school students enrolled in dual credit courses during fiscal year 2023. Currently, **all** Illinois community colleges offer dual credit courses.

**Table 1** provides the comparison of annual dual credit headcount enrollments in Illinois public community colleges in fiscal years 2019 through 2023. Annual dual credit enrollments increased 9.4 percent compared to the previous year (N = 75,507) and 28.9 percent compared

*Each of the 48 community colleges in Illinois provided dual credit courses in fiscal year 2023.*

to five years ago (N = 64,106). Among Illinois' 48 colleges, 24 colleges reported more than 1,000 dual credit enrollments in fiscal year 2023. College of DuPage reported the most dual credit enrollments (N = 7,391), followed by Harper College (N = 5,300), and Joliet Junior College (N = 5,057) (Appendix Table A-1).

High school students enrolled in dual credit courses comprised **20.1 percent of all credit enrollment** (N = 411,217) at Illinois community colleges in fiscal year 2023. Dual credit students comprised more than twenty percent of all credit enrollments in twenty-five Illinois community colleges, more than ten percent in 43 colleges, and fewer than five percent in one college. South Suburban College reported the largest proportion of dual credit enrollment in comparison to the college's total credit enrollment in fiscal year 2023 (46.4 percent), followed by Kaskaskia College (45.8 percent) and Highland Community College (36.6 percent) (Appendix Table A-2).

**Table 1**  
**Comparison of Annual Dual Credit Enrollments in Illinois Public Community Colleges**  
**Fiscal Years 2019-2023**

	FY 2019	FY 2020	FY 2021	FY 2022	FY 2023
Headcount	64,106	69,299	66,788	75,507	82,602
% Change	8.6%	8.1%	-3.6%	13.1%	9.4%

**SOURCE OF DATA: ICCB Centralized Data System—Annual Enrollment and Completion (A1) Data**

#### CHARACTERISTICS OF GENDER AND RACE/ETHNICITY

**Table 2** shows that females constitute a slight majority (51.4 percent) of high school students enrolled in community college courses in fiscal year 2023 (Appendix Table A-3). Gender classifications are aligned with U.S. Department of Education collection and reporting standards.

**Table 2**  
**Dual Credit Enrollment by Gender in Fiscal Year 2023**

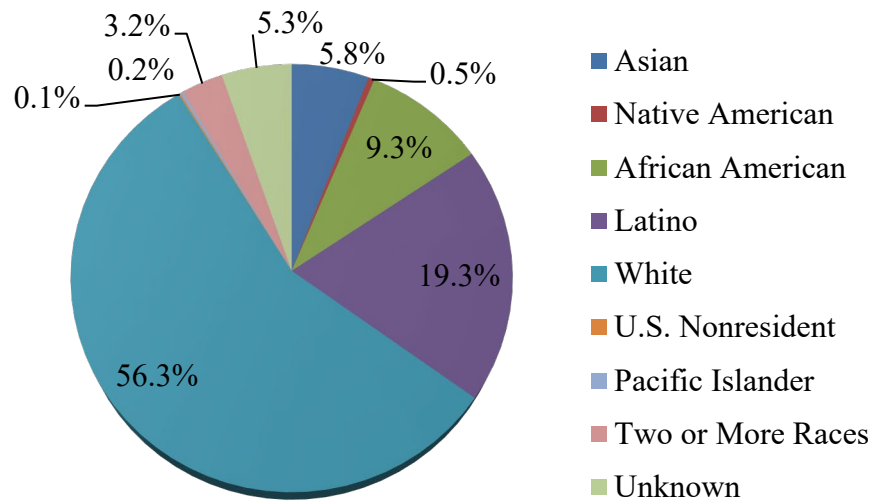
Gender	Number	Percent
Male	39,285	47.6%
Female	42,433	51.4%
Unknown or Another Gender	884	1.1%
Total	82,602	100.0%

**SOURCE OF DATA: ICCB Centralized Data System—Annual Enrollment and Completion (A1) Data**

**Figure 1** depicts the race/ethnicity of high school students enrolling in community college dual credit courses in fiscal year 2023. Nearly six out of ten dual credit students were White (56.3 percent). Latino dual credit students accounted for 19.3 percent and African American students for 9.3 percent in fiscal year 2023. Students identifying themselves as Asian (5.8 percent), Two or More Races (3.2 percent), Native American (0.5 percent), Pacific Islander (0.2 percent), and U.S. Nonresident (0.1 percent) represented a small portion of dual credit students (Appendix Table A-4). Dual credit participation was lower among minority high school students than White high school students in fiscal year 2023. Out of 198,172 minority students (whose ethnicity was known) enrolled in credit coursework in Illinois public community colleges in fiscal year 2023, 16.0 percent of students were enrolled in dual credit courses (N = 31,743). In comparison, out of 195,456 White students enrolled in credit coursework in Illinois public community colleges in fiscal year 2023, 23.8 percent of students were enrolled in dual credit courses (N = 46,484).



**Figure 1**  
**Race/Ethnicity of High School Students Taking Dual Credit Courses in Fiscal Year 2023**

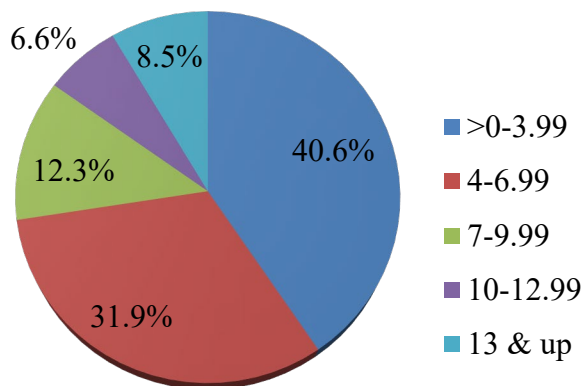


**SOURCE OF DATA: ICCB Centralized Data System—Annual Enrollment and Completion (A1) Data**

#### CREDIT HOURS ENROLLED BY DUAL CREDIT STUDENTS

**Figure 2** displays dual credit enrollment by number of enrolled credit hours in fiscal year 2023. Of the 82,602 high school students that enrolled in dual credit coursework in fiscal year 2023, four out of ten students (40.6 percent) enrolled in college-level coursework of fewer than four credit hours, nearly one out of three students (31.9 percent) enrolled in between four and fewer than seven credit hours, nearly one out of five students (19.0 percent) enrolled in between seven and fewer than thirteen credit hours, and one out of twelve students (8.5 percent) enrolled in 13 or more credit hours of college-level coursework in fiscal year 2023 (Appendix Table A-5).

**Figure 2**  
**Dual Credit Headcount Enrollment by Number of Enrolled Hours**  
**Fiscal Year 2023**

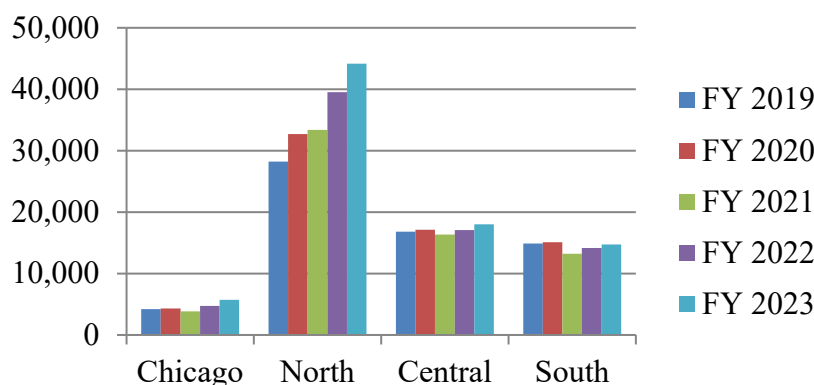


**SOURCE OF DATA: ICCB Centralized Data System—Annual Enrollment and Completion (A1) Data**

## GEOGRAPHIC REGION

**Figure 3** compares dual credit enrollment by geographic region. Illinois community colleges in the North region (N = 44,172) had the most dual credit students in fiscal year 2023 followed by the geographic regions of Central (N = 18,008), South (N = 14,724), and Chicago (N = 5,698). From fiscal year 2019 to 2023, the largest increase in dual credit occurred in North (+56.6 percent), followed by Chicago (+36.1 percent), and Central (+7.0 percent), while South experienced a decrease in dual credit enrollment (-1.1 percent). The list of colleges in each geographic region is provided in Appendix C.

**Figure 3**  
**Dual Credit Enrollment by Geographic Region in Fiscal Years 2019-2023**



**SOURCE OF DATA:** ICCB Centralized Data System—Annual Enrollment and Completion (A1) Data

---

## DUAL CREDIT COURSE COUNT AND ENROLLMENT (DUPLICATED)

---

In the following portion of the report, dual credit course count and enrollment data are organized by broad programmatic area based on the Program Classification Structure (PCS).

## OVERALL COURSE COUNT AND ENROLLMENT

Illinois community colleges offered a total of 14,638 dual credit courses (duplicated) in fiscal year 2023, which was an increase of 8.1 percent from the previous year (N = 13,543). Dual credit courses accounted for 11.3 percent of all credit courses (N = 130,078) and 13.2 percent of all Transfer or Career and Technical Education courses in fiscal year 2023 (N = 110,791). Appendix Table B-1 provides dual credit course count in fiscal years 2019 through 2023 for each community college. Southwestern Illinois College reported the most dual credit courses (N = 1,157), followed by Elgin Community College (N = 744) and College of DuPage (N = 671). Compared with the previous year, 37 colleges reported an increase in the number of dual credit courses, while nine reported decreases. Two colleges experienced little or no change (less than one percent).

Duplicated dual credit course enrollments totaled 163,283 in fiscal year 2023, which was an increase of 11.5 percent compared to 2022 (N = 146,391). Among Illinois' community colleges, 36 colleges reported increases in dual credit enrollments, while 12 colleges exhibited decreases in

*More than one hundred sixty-three thousand enrollments occurred across dual credit courses in fiscal year 2023.*

comparison to fiscal year 2022. Dual credit course enrollment accounted for 11.5 percent of all credit course enrollments (N = 1,423,524) and 12.8 percent of all Transfer or Career and Technical Education credit course enrollments (N = 1,273,456) in fiscal year 2023. McHenry County College reported the most dual credit enrollments (N = 11,995) in fiscal year 2023, followed by College of DuPage (N = 10,992) and Southwestern Illinois College (N = 10,009) (Appendix Table B-2).

As seen in [Table 3](#), the average dual credit class size was 11.2 students per class in fiscal year 2023, a 3.2 percent increase from 2022 (N = 10.8). The average dual credit class size ranged from 3.8 students at Rock Valley College to 22.1 students at McHenry County College in fiscal year 2023 (Appendix Table B-3).

**Table 3**  
**Dual Credit Course Count, Enrollment (Duplicated), and Average Class Size**  
**Fiscal Years 2019-2023**

	<b>2019</b>	<b>2020</b>	<b>2021</b>	<b>2022</b>	<b>2023</b>
Number of Courses	11,905	12,569	13,314	13,543	14,638
Number of Enrollments	124,614	133,394	130,943	146,391	163,283
Average Class Size	10.5	10.6	9.8	10.8	11.2

**Source of Data: ICCB Centralized Data System—Annual Course (AC) Data**

The Classification of Instructional Programs (CIP) was updated for 2020. The five highest dual credit course enrollments by program area (2-digit CIP) in fiscal year 2023 were in English Language and Literature/Letters (N = 34,038); Mathematics and Statistics (N = 15,489); Business, Management, Marketing, and Related Support Services (N = 15,410); Health Professions and Related Programs (N = 10,090); and Foreign Languages, Literatures, and Linguistics (N = 8,186) (Appendix Table B-14).

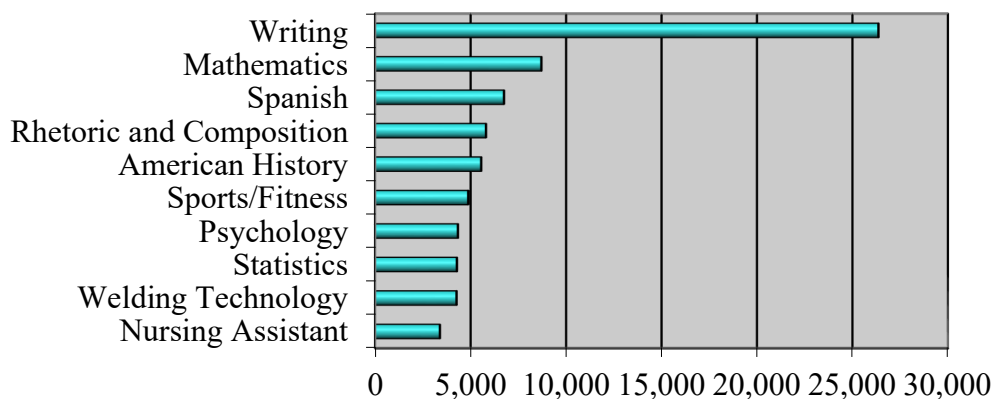
Appendix Table B-15 provides statewide dual credit course enrollment by Career Cluster. Guidance from the Department of Education resulted in the reclassification of some CIPs to the “Other / Transfer” category” in fiscal year 2020. Excluding the Other and non-CTE related CIPs, the top five Career Clusters in fiscal year 2023 were Science, Technology, Engineering and Mathematics (N = 27,432); Business Management and Administration (N = 15,200); Manufacturing (N = 11,667); Human Services (N = 9,922); and Education and Training (N = 7,143). The Career Cluster brand is a registered trademark of [Advance CTE](#).

Course enrollments in the ten largest programs accounted for 45.5 percent (N = 74,321) of all dual credit course enrollments in fiscal year 2023. As depicted in [Figure 4](#), the ten highest dual credit enrollments overall by 6-digit Classification of Instructional Programs (CIP) code in academic year 2023 were in Writing, General, which was formerly reported under English Composition (N = 26,363); Mathematics, General (N = 8,706); Spanish Language and Literature (N = 6,748); Rhetoric and Composition, which was formerly reported under Speech and Rhetorical Studies (N

## Dual Credit in the Illinois Community College System in Fiscal Year 2023

= 5,805); American History (United States) (N = 5,554); Sports, Kinesiology, and Physical Education/Fitness, General (N = 4,874); Psychology, General (N = 4,336); Statistics, General (N = 4,282); Welding Technology/Welder (N = 4,263); and Nursing Assistant/Aide and Patient Care Assistant/Aide (N = 3,390). All ten largest programs experienced increases from 2022 (Appendix Table B-4).

**Figure 4**  
**Top Ten Dual Credit Course Enrollments in Fiscal Year 2023**

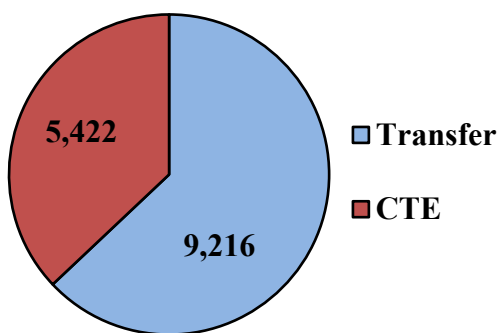


Source of Data: ICCB Centralized Data System—Annual Course (AC) Data

## TRANSFER VERSUS CAREER AND TECHNICAL EDUCATION

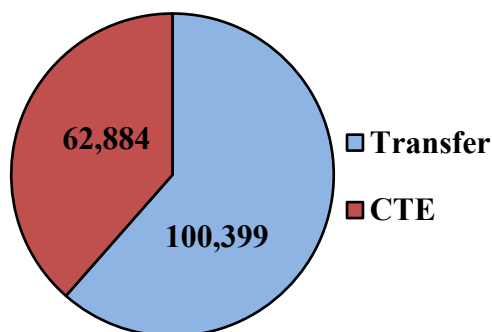
**Figure 5** and **Figure 6** depict dual credit course count and enrollment in Transfer courses and Career and Technical Education (CTE) courses in fiscal year 2023.

**Figure 5**  
**Dual Credit Course Count in Fiscal Year 2023**



Source of Data: ICCB Centralized Data System—Annual Course (AC) Data

**Figure 6**  
**Dual Credit Course Enrollment in Fiscal Year 2023**



Source of Data: ICCB Centralized Data System—Annual Course (AC) Data

As **Table 4** shows, Illinois community colleges offered 9,216 Transfer dual credit courses in fiscal year 2023 (Appendix Table B-5), which was 63.0 percent of all dual credit courses offered. This is a 10.2 percent increase compared to the previous year (N = 8,366). The average dual credit class size in Transfer education was 10.9 students in fiscal year 2023 (Appendix Table B-7).

**Table 4**  
**Transfer and CTE Dual Credit Course Count in Fiscal Years 2019-2023**

	2019	2020	2021	2022	2023
Transfer	7,433	7,758	8,474	8,366	9,216
CTE	4,472	4,811	4,840	5,177	5,422
Total	11,905	12,569	13,314	13,543	14,638

Source of Data: ICCB Centralized Data System—Annual Course (AC) Data

As seen in **Table 5**, Transfer dual credit course enrollments (Appendix Table B-6) accounted for 61.5 percent of all dual credit course enrollments in fiscal year 2023. Enrollments in this area increased to 100,399 in fiscal year 2023, an increase of 12.3 percent from 2022 (N = 89,366). Appendix Table B-8 shows the top five enrollments in Transfer courses: Writing, General (N = 26,303); Mathematics, General (N = 8,706); Spanish Language and Literature (N = 6,748); Rhetoric and Composition (N = 5,774); and American History (United States) (N = 5,554). Enrollments in these five courses accounted for 32.5 percent of all dual credit enrollments in fiscal year 2023.

**Table 5**  
**Dual Credit Course Enrollment (Duplicated) in Transfer and CTE Courses**  
**Fiscal Years 2019-2023**

	2019	2020	2021	2022	2023
Transfer	75,967	79,231	83,720	89,366	100,399
CTE	48,647	54,163	47,223	57,025	62,884
Total	124,614	133,394	130,943	146,391	163,283

Source of Data: ICCB Centralized Data System—Annual Course (AC) Data

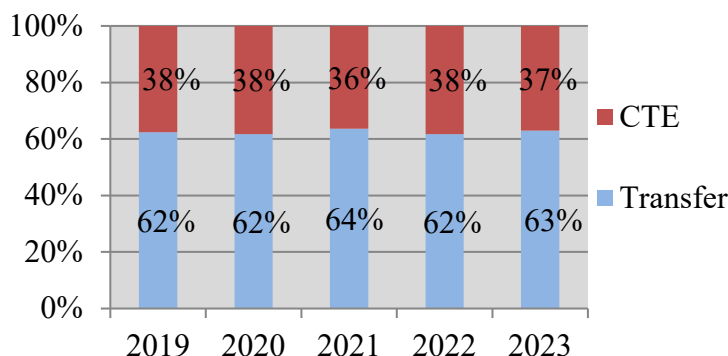
## Dual Credit in the Illinois Community College System in Fiscal Year 2023

The Career and Technical Education dual credit course count was 5,422 in fiscal year 2023, which was 37.0 percent of all dual credit courses offered. This is an increase of 4.7 percent from fiscal year 2022 (N = 5,177) (Appendix Table B-9). The average dual credit class size in this area was 11.6 students in fiscal year 2023 (Appendix Table B-11).

Dual credit course enrollments in Career and Technical Education increased to 62,884 in fiscal year 2023, which is a 10.3 percent increase over fiscal year 2022 (N = 57,025). Appendix Table B-12 shows that the highest enrollments in this area were in Welding Technology/Welder (N = 4,263); Nursing Assistant/Aide and Patient Care Assistant/Aide (N = 3,390); Entrepreneurship/Entrepreneurial Studies (N = 3,001); Medical Office Assistant/Specialist (N = 2,886); and Business/Office Automation/Technology/Data Entry (N = 2,729). Enrollments in these five courses accounted for 10.0 percent of all dual credit enrollments in fiscal year 2023.

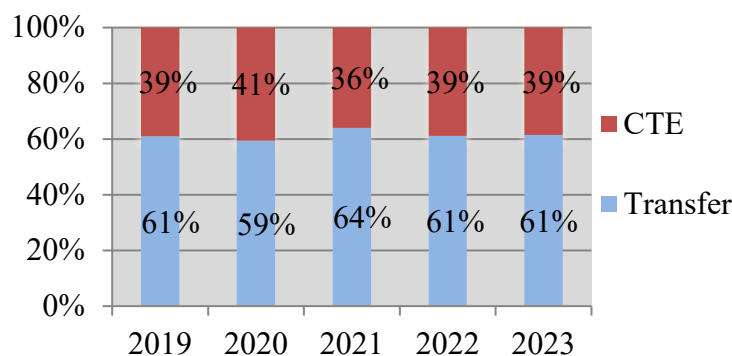
**Figure 7** and **Figure 8** depict the proportion of Transfer and Career and Technical Education dual credit course counts and enrollments in fiscal years 2019 through 2023. The proportion of Transfer to CTE remained steady across the five years.

**Figure 7**  
**Dual Credit Course Count in Fiscal Years 2019-2023**



Source of Data: ICCB Centralized Data System—Annual Course (AC) Data

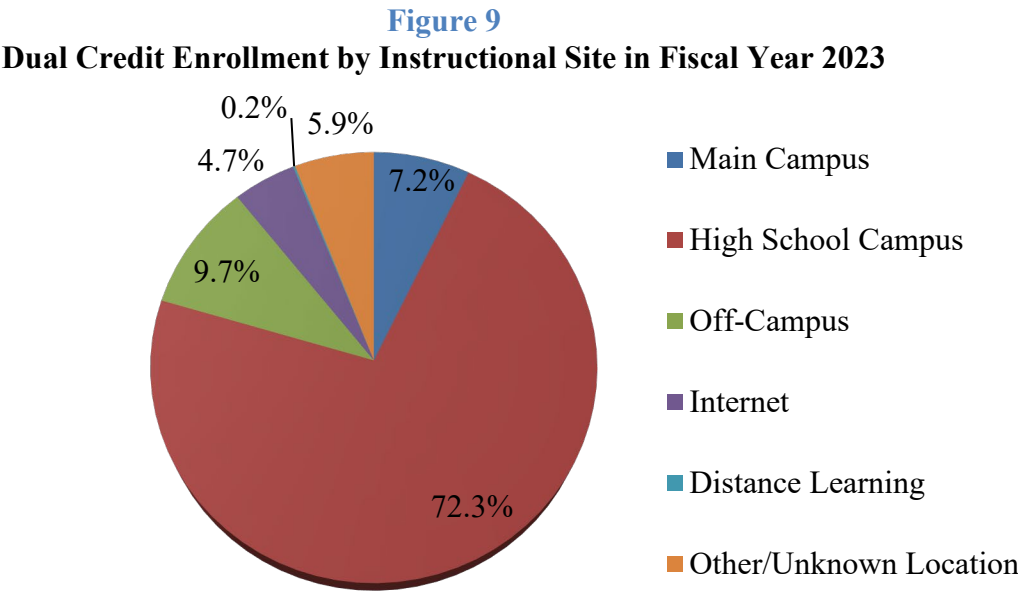
**Figure 8**  
**Dual Credit Course Enrollment in Fiscal Years 2019-2023**



Source of Data: ICCB Centralized Data System—Annual Course (AC) Data

INSTRUCTIONAL SITE

**Figure 9** displays dual credit enrollment by instructional site. In fiscal year 2023, nearly three out of four high school dual credit students (72.3 percent) enrolled in dual credit courses at the high school campus. One in six high school dual credit students attended a main college campus (7.2 percent) or an off-campus college facility (9.7 percent). The remaining 10.8 percent of dual credit students either chose online/distance education classes (4.9 percent), or some other/unknown location (5.9 percent) to enroll in dual credit courses (Appendix Table B-16).



Source of Data: ICCB Centralized Data System—Annual Course (AC) Data

---

**DUAL CREDIT STUDENT OUTCOMES**

---

GRADUATION RATE

**Graduation rate** is a success outcome measure for postsecondary students that begin their studies pursuing a traditional full-time enrollment pattern. The primary postsecondary graduation rate collected through the U.S. Department of Education’s Integrated Postsecondary Education Data System (IPEDS) provides the percentage of first-time, full-time students who graduate within 150 percent of catalog time (i.e., 3 years for an associate degree or two years for a 30-credit short-term certificate).

**Table 6** provides graduation rate by dual credit enrollment status. First-time, full-time students that took at least one dual credit course prior to graduating high school and enrolling at a community college have a substantially higher graduation rate than those students that did not enroll in dual credit coursework. For each of the last five tracking cohorts (Fall 2016-Fall 2020) the graduation rate for the dual credit subgroup was nearly 20 percent higher compared to students

that did not enroll in dual credit coursework. For the most recent cohort (Fall 2020), the dual credit subgroup had a graduation rate of 51.25 percent compared to 33.13 percent for non-dual credit students.

**Table 6**  
**Graduation Rate for Dual Credit Students**  
**Illinois Community College First-Time, Full-Time Entering Cohort**  
**Graduating within 150% of Catalog Program Time**  
**Fall 2016-20 Cohorts**

Dual Credit Prior to Enrollment in Community College	Fall 16 Cohort through Summer 19	Fall 17 Cohort through Summer 20	Fall 18 Cohort through Summer 21	Fall 19 Cohort through Summer 22	Fall 20 Cohort through Summer 23
Yes	2,612 / 5,586 46.76%	2,892 / 6,022 48.02%	2,814 / 5,831 48.26%	2,879 / 5,913 48.69%	2,931 / 5,719 51.25%
No	5,992 / 22,007 27.23%	6,151 / 21,711 28.33%	6,194 / 21,512 28.79%	6,635 / 22,056 30.08%	5,978 / 18,042 33.13%
Total	8,604 / 27,593 31.18%	9,043 / 27,733 32.61%	9,008 / 27,343 32.94%	9,514 / 27,969 34.02%	8,909 / 23,761 37.49%

**Source of Data:** ICCB Centralized Data System—Annual Enrollment and Completion (A1) Data, Fall Enrollment (E1) Data, and Summer Graduate Reporting for the IPEDS Graduation Rate Survey (GS)

**Table 7** contains graduation rate disaggregated by dual credit enrollment status and race/ethnicity. Across all race/ethnicities in the Fall 2016- Fall 2019 tracking cohorts, the graduation rate was higher for the dual credit student subgroup compared to the non-dual credit subgroup. In the most recent tracking cohort (Fall 2020), for the students that enrolled in dual credit courses at a community college prior to enrollment in the community college system, the graduation rate was higher compared to students that did not enroll in dual credit in all race/ethnicity categories except for the Other subgroup tracking cohort, ranging from 6.04 percentage points for African American students to 19.24 percentage points for Asian students. For White students, the graduation rate was 17.06 percentage points higher for dual credit students, and for Hispanic/Latino students it was 14.09 percentage points higher. For the Other race/ethnicity, the graduation rate was 1.62 percentage points lower for dual credit students, but this is based on a small number of dual credit students in the Other race/ethnicity subgroup.



**Table 7**  
**Graduation Rate for Dual Credit Students by Race/Ethnicity**  
**Illinois Community College First-Time, Full-Time Entering Cohort**  
**Graduating within 150% of Catalog Program Time**  
**Fall 2016-20 Cohorts**

<i>Race/ Ethnicity</i>	<b>DC Prior to Enrollment in CC</b>	<b>Fall 16 Cohort through Summer 19</b>	<b>Fall 17 Cohort through Summer 20</b>	<b>Fall 18 Cohort through Summer 21</b>	<b>Fall 19 Cohort through Summer 22</b>	<b>Fall 20 Cohort through Summer 23</b>
<i>African American</i>	Yes	72 / 276 26.09%	77 / 323 23.84%	100 / 372 26.88%	71 / 295 24.07%	55 / 219 25.11%
	No	420 / 3,180 13.21%	443 / 3,106 14.26%	401 / 2,873 13.96%	447 / 2,836 15.76%	353 / 1,851 19.07%
<i>Hispanic/ Latino</i>	Yes	327 / 828 39.49%	366 / 967 37.85%	312 / 848 36.79%	439 / 1,045 42.01%	456 / 1,086 41.99%
	No	1,337 / 5,692 23.49%	1,530 / 5,951 25.71%	1,553 / 6,069 25.59%	1,592 / 6,303 25.26%	1,338 / 4,796 27.90%
<i>Asian</i>	Yes	56 / 146 38.36%	55 / 150 36.67%	61 / 153 39.87%	96 / 157 61.15%	114 / 213 53.52%
	No	252 / 926 27.21%	268 / 855 31.35%	331 / 980 33.78%	325 / 995 32.66%	289 / 843 34.28%
<i>Two or More Races</i>	Yes	43 / 153 28.1%	61 / 169 36.09%	78 / 202 38.61%	72 / 193 37.31%	72 / 186 38.71%
	No	160 / 713 22.44%	150 / 717 20.92%	174 / 759 22.92%	190 / 748 25.40%	175 / 625 28.00%
<i>White</i>	Yes	2,066 / 4,049 51.02%	2,289 / 4,305 53.17%	2,215 / 4,148 53.40%	2,125 / 4,081 52.07%	2,175 / 3,893 55.87%
	No	3,613 / 10,754 33.6%	3,549 / 10,300 34.46%	3,487 / 10,031 34.76%	3,803 / 10,330 36.82%	3,575 / 9,212 38.81%
<i>Other*</i>	Yes	5 / 14 35.71%	8 / 20 40.00%	8 / 22 36.36%	12 / 27 44.44%	4 / 12 33.33%
	No	65 / 264 24.62%	73 / 284 25.70%	91 / 285 31.93%	123 / 316 38.92%	79 / 226 34.96%
<i>Unknown</i>	Yes	43 / 120 35.83%	36 / 88 40.91%	40 / 86 46.51%	64 / 115 55.65%	55 / 110 50.00%
	No	145 / 478 30.33%	138 / 498 27.71%	157 / 515 30.49%	155 / 528 29.36%	169 / 489 34.56%
<i>Total</i>	Yes	2,612 / 5,586 46.76%	2,892 / 6,022 48.02%	2,814 / 5,831 48.26%	2,879 / 5,913 48.69%	2,931 / 5,719 51.25%
	No	5,992 / 22,007 27.23%	6,151 / 21,711 28.33%	6,194 / 21,512 28.79%	6,635 / 22,056 30.08%	5,978 / 18,042 33.13%

\*Other consists of American Indian or Alaska Native, Native Hawaiian or Other Pacific Islander, and Nonresident

Source of Data: ICCB Centralized Data System—Annual Enrollment and Completion (A1) Data, Fall Enrollment (E1) Data, and Summer Graduate Reporting for the IPEDS Graduation Rate Survey (GS)

In **Table 8**, graduation rate is provided for students that enrolled in dual credit courses at a community college prior to enrollment in the community college system by Pell recipient subgroup. Across the last five tracking cohorts (Fall 2016-Fall 2020), Pell recipient students that enrolled in a dual credit course while in high school had a substantially higher graduation rate than those that did not enroll in a dual credit course. In the most recent tracking cohort (Fall 2020), the graduation rate for the Pell recipient dual credit subgroup was higher by 16.06 percentage points than the graduation rate for those Pell recipients that were non-dual credit. For Non-Pell recipients, the graduation rate was 18.32 percentage points higher for the dual credit student subgroup compared to the non-dual credit subgroup.

**Table 8**  
**Graduation Rate for Dual Credit Students by Pell Recipient**  
**Illinois Community College First-Time, Full-Time Entering Cohort**  
**Graduating within 150% of Catalog Program Time**  
**Fall 2016-20 Cohorts**

<i>Pell Recipient Status</i>	DC Prior to Enrollment in CC	Fall 16 Cohort through Summer 19	Fall 17 Cohort through Summer 20	Fall 18 Cohort through Summer 21	Fall 19 Cohort through Summer 22	Fall 20 Cohort through Summer 23
<i>Pell Recipient</i>	Yes	894 / 2,167 41.26%	1,027 / 2,429 42.28%	968 / 2,289 42.29%	1,010 / 2,401 42.07%	876 / 1,969 44.49%
	No	2,490 / 10,499 23.72%	2,595 / 10,578 24.53%	2,478 / 9,842 25.18%	2,772 / 10,709 25.88%	2,131 / 7,496 28.43%
<i>Non-Pell Recipient</i>	Yes	1,718 / 3,419 50.25%	1,865 / 3,593 51.91%	1,846 / 3,542 52.12%	1,869 / 3,512 53.22%	2,055 / 3,750 54.80%
	No	3,502 / 11,508 30.43%	3,556 / 11,133 31.94%	3,716 / 11,670 31.84%	3,863 / 11,347 34.04%	3,847 / 10,546 36.48%
<i>Total</i>	Yes	2,612 / 5,586 46.76%	2,892 / 6,022 48.02%	2,814 / 5,831 48.26%	2,879 / 5,913 48.69%	2,931 / 5,719 51.25%
	No	5,992 / 22,007 27.23%	6,151 / 21,711 28.33%	6,194 / 21,512 28.79%	6,635 / 22,056 30.08%	5,978 / 18,042 33.13%

Source of Data: ICCB Centralized Data System—Annual Enrollment and Completion (A1) Data, Fall Enrollment (E1) Data, and Summer Graduate Reporting for the IPEDS Graduation Rate Survey (GS)

## ADVANCEMENT RATE

Community colleges urge students to complete their associate degrees prior to transferring to a four-year institution. Still, a substantial number of community college students generate a considerable amount of credit hours but then transfer to a four-year institution prior to receiving the associate degree. The federal IPEDS formula for calculating graduation rate does not include transfer-outs prior to credential attainment or those still persisting at the community college, and thus negatively impacts graduation rate outcomes. To provide a more comprehensive view of student success at community colleges, ICCB calculates the **advancement rate** to include students who either graduated, transferred to other higher education institutions, or were still enrolled at the end of the 150% of catalog time observation period.

**Table 9** represents student advancement rate which utilizes the same tracking cohorts as graduation rate. First-time, full-time students that took at least one dual credit course prior to graduating high school and enrolling at a community college have a considerably higher advancement rate than those students that did not enroll in dual credit coursework. In the last five tracking cohorts (Fall 2016-Fall 2020) the advancement rate was 10-15 percentage points higher for the dual credit subgroup compared to students that did not enroll in dual credit coursework while in high school. For the most recent cohort (Fall 2020), the dual credit subgroup had an advancement rate of 75.24 percent compared to 65.00 percent for non-dual credit students.

**Table 9**  
**Advancement Rate for Dual Credit Students**  
**Illinois Community College First-Time, Full-Time Entering Cohort**  
**Graduating, Transferring-Out, or Still-Enrolled at 150% of Catalog Program Time**  
**Fall 2016-20 Cohorts**

Dual Credit Prior to Enrollment in Community College	Fall 16 Cohort through Summer 19	Fall 17 Cohort through Summer 20	Fall 18 Cohort through Summer 21	Fall 19 Cohort through Summer 22	Fall 20 Cohort through Summer 23
Yes	4,168 / 5,586 74.62%	4,451 / 6,022 73.91%	4,258 / 5,831 73.02%	4,242 / 5,913 71.74%	4,303 / 5,719 75.24%
No	13,275 / 22,007 60.32%	12,792 / 21,711 58.92%	12,678 / 21,512 58.93%	12,986 / 22,056 58.88%	11,727 / 18,042 65.00%
Total	17,443 / 27,593 63.22%	17,243 / 27,733 62.18%	16,936 / 27,343 61.94%	17,228 / 27,969 61.60%	16,030 / 23,761 67.46%

**Source of Data: ICCB Centralized Data System—Annual Enrollment and Completion (A1) Data, Fall Enrollment (E1) Data, Summer Graduate Reporting for the IPEDS Graduation Rate Survey (GS), and National Student Clearinghouse (NSC)**

**Table 10** provides identical information as Table 9 but is disaggregated by race/ethnicity. In the last five tracking cohorts (Fall 2016-Fall 2020) the advancement rate was consistently higher for the dual credit subgroup across all race/ethnicities except the Other race/ethnicity (Fall 2018 and Fall 2020 cohort). In the most recent tracking cohort (Fall 2020), for the students that enrolled in dual credit courses at a community college prior to enrollment in the community college system, the advancement rate ranged from 3.61 percentage points for students of Two or More Races to 11.00 percentage points for Hispanic/Latino students. For White students, the advancement rate was 8.19 percentage points higher for dual credit students, for African American students it was 5.50 percentage points higher, and for Asian students it was 5.04 percentage points higher.

**Table 10**

**Advancement Rate for Dual Credit Students by Race/Ethnicity  
Illinois Community College First-Time, Full-Time Entering Cohort  
Graduating, Transferring-Out, or Still-Enrolled at 150% of Catalog Program Time  
Fall 2016-20 Cohorts**

<i>Race/ Ethnicity</i>	<b>DC Prior to Enrollment in CC</b>	<b>Fall 16 Cohort through Summer 19</b>	<b>Fall 17 Cohort through Summer 20</b>	<b>Fall 18 Cohort through Summer 21</b>	<b>Fall 19 Cohort through Summer 22</b>	<b>Fall 20 Cohort through Summer 23</b>
<i>African American</i>	Yes	162 / 276 58.70%	177 / 323 54.80%	208 / 372 55.91%	156 / 295 52.88%	130 / 219 59.36%
	No	1,454 / 3,180 45.72%	1,362 / 3,106 43.85%	1,267 / 2,873 44.10%	1,249 / 2,836 44.04%	997 / 1,851 53.86%
<i>Hispanic/ Latino</i>	Yes	554 / 828 66.91%	624 / 967 64.53%	538 / 848 63.44%	694 / 1,045 66.41%	751 / 1,086 69.15%
	No	3,200 / 5,692 56.22%	3,244 / 5,951 54.51%	3,297 / 6,069 54.33%	3,340 / 6,303 52.99%	2,789 / 4,796 58.15%
<i>Asian</i>	Yes	120 / 146 82.19%	125 / 150 83.33%	117 / 153 76.47%	134 / 157 85.35%	177 / 213 83.10%
	No	688 / 926 74.30%	646 / 855 75.56%	738 / 980 75.31%	721 / 995 72.46%	658 / 843 78.05%
<i>Two or More Races</i>	Yes	98 / 153 64.05%	107 / 169 63.31%	134 / 202 66.34%	128 / 193 66.32%	121 / 186 65.05%
	No	411 / 713 57.64%	379 / 717 52.86%	433 / 759 57.05%	405 / 748 54.14%	384 / 625 61.44%
<i>White</i>	Yes	3,138 / 4,049 77.50%	3,335 / 4,305 77.47%	3,194 / 4,148 77.00%	3,021 / 4,081 74.03%	3,036 / 3,893 77.99%
	No	7,093 / 10,754 65.96%	6,727 / 10,300 65.31%	6,467 / 10,031 64.47%	6,766 / 10,330 65.50%	6,430 / 9,212 69.80%
<i>Other*</i>	Yes	12 / 14 85.71%	17 / 20 85.00%	12 / 22 54.55%	20 / 27 74.07%	6 / 12 50.00%
	No	135 / 264 51.14%	143 / 284 50.35%	174 / 285 61.05%	192 / 316 60.76%	146 / 226 64.60%
<i>Unknown</i>	Yes	84 / 120 70.00%	66 / 88 75.00%	55 / 86 63.95%	89 / 115 77.39%	82 / 110 74.55%
	No	294 / 478 61.51%	291 / 498 58.43%	302 / 515 58.64%	313 / 528 59.28%	323 / 489 66.05%
<i>Total</i>	Yes	4,168 / 5,586 74.62%	4,451 / 6,022 73.91%	4,258 / 5,831 73.02%	4,242 / 5,913 71.74%	4,303 / 5,719 75.24%
	No	13,275 / 22,007 60.32%	12,792 / 21,711 58.92%	12,678 / 21,512 58.93%	12,986 / 22,056 58.88%	11,727 / 18,042 65.00%

\*Other consists of American Indian or Alaska Native, Native Hawaiian or Other Pacific Islander, and Nonresident

Source of Data: ICCB Centralized Data System—Annual Enrollment and Completion (A1) Data, Fall Enrollment (E1) Data, Summer Graduate Reporting for the IPEDS Graduation Rate Survey (GS), and National Student Clearinghouse (NSC)

**Table 11** represents advancement rate for students that enrolled in dual credit courses at a community college prior to enrollment in the community college system by Pell recipient subgroup. The Pell recipient subgroup, across the last five years, that enrolled in a dual credit course while in high school had a substantially higher advancement rate than those that did not enroll in a dual credit course. In the most recent tracking cohort (Fall 2020), the advancement rate for the Pell recipient dual credit subgroup was higher by 10.44 percentage points than the advancement rate for those Pell recipients that were non-dual credit. For Non-Pell recipients, the advancement rate was 9.09 percentage points higher for the dual credit student subgroup compared to the non-dual credit subgroup.

**Table 11**  
**Advancement Rate for Dual Credit Students by Pell Recipient**  
**Illinois Community College First-Time, Full-Time Entering Cohort**  
**Graduating, Transferring-Out, or Still-Enrolled at 150% of Catalog Program Time**  
**Fall 2016-20 Cohorts**

<i>Pell Recipient Status</i>	DC Prior to Enrollment in CC	Fall 16 Cohort through Summer 19	Fall 17 Cohort through Summer 20	Fall 18 Cohort through Summer 21	Fall 19 Cohort through Summer 22	Fall 20 Cohort through Summer 23
<i>Pell Recipient</i>	Yes	1,483 / 2,167 68.44%	1,652 / 2,429 68.01%	1,535 / 2,289 67.06%	1,571 / 2,401 65.43%	1,374 / 1,969 69.78%
	No	5,764 / 10,499 54.90%	5,706 / 10,578 53.94%	5,328 / 9,842 54.14%	5,675 / 10,709 52.99%	4,448 / 7,496 59.34%
<i>Non-Pell Recipient</i>	Yes	2,685 / 3,419 78.53%	2,799 / 3,593 77.90%	2,723 / 3,542 76.88%	2,671 / 3,512 76.05%	2,929 / 3,750 78.11%
	No	7,511 / 11,508 65.27%	7,086 / 11,133 63.65%	7,350 / 11,670 62.98%	7,311 / 11,347 64.43%	7,279 / 10,546 69.02%
<i>Total</i>	Yes	4,168 / 5,586 74.62%	4,451 / 6,022 73.91%	4,258 / 5,831 73.02%	4,242 / 5,913 71.74%	4,303 / 5,719 75.24%
	No	13,275 / 22,007 60.32%	12,792 / 21,711 58.92%	12,678 / 21,512 58.93%	12,986 / 22,056 58.88%	11,727 / 18,042 65.00%

**Source of Data: ICCB Centralized Data System—Annual Enrollment and Completion (A1) Data, Fall Enrollment (E1) Data, Summer Graduate Reporting for the IPEDS Graduation Rate Survey (GS), and National Student Clearinghouse (NSC)**

---

## BIBLIOGRAPHY

---

- Advance CTE: State Leaders Connecting Learning to Work. (2023). Career Clusters. Silver Spring, Maryland. <https://careertech.org/career-clusters>
- Illinois 96<sup>th</sup> General Assembly. (2009). Higher Education (096-0194) Dual Credit Quality Act. Springfield, IL: Illinois General Assembly. <http://www.ilga.gov/legislation/publicacts/fulltext.asp?Name=096-0194>
- Illinois 100<sup>th</sup> General Assembly (2018). Higher Education (110 ILCS 27/) Dual Credit Quality Act. Springfield, IL: Illinois General Assembly. <http://www.ilga.gov/legislation/ilcs/ilcs3.asp?ActID=3117&ChapterID=18>
- Illinois 100<sup>th</sup> General Assembly. (2018). Public Act 100-0792. Springfield, IL: Illinois General Assembly. <http://www.ilga.gov/legislation/publicacts/fulltext.asp?Name=100-0792>
- Illinois 100<sup>th</sup> General Assembly. (2018). Public Act 100-1049. Springfield, IL: Illinois General Assembly. <http://www.ilga.gov/legislation/publicacts/fulltext.asp?Name=100-1049>
- Illinois 101<sup>st</sup> General Assembly. (2021). Public Act 101-0654. Springfield, IL: Illinois General Assembly. <https://www.ilga.gov/legislation/publicacts/101/101-0654.htm>
- Illinois 102<sup>nd</sup> General Assembly. (2022). Public Act 102-0209. Springfield, IL: Illinois General Assembly. <https://www.ilga.gov/legislation/publicActs/fulltext.asp?Name=102-0209&GA=102>
- Illinois 102<sup>nd</sup> General Assembly. (2022). Public Act 102-0516. Springfield, IL: Illinois General Assembly. <https://www.ilga.gov/legislation/publicacts/fulltext.asp?Name=102-0516>
- Illinois 102<sup>nd</sup> General Assembly. (2022). Public Act 102-1077. Springfield, IL: Illinois General Assembly. <https://www.ilga.gov/legislation/publicacts/fulltext.asp?Name=102-1077>
- Illinois Community College Board. (October 2023). Administrative Rules of the Illinois Community College Board. Springfield, IL: Illinois Community College Board. [http://www2.iccb.org/iccb/wp-content/pdfs/manuals/ICCB\\_SystemRules\\_Manual.pdf](http://www2.iccb.org/iccb/wp-content/pdfs/manuals/ICCB_SystemRules_Manual.pdf)
- Illinois Community College Board. (2020). Dual Credit. Springfield, IL: Illinois Community College Board. [http://www2.iccb.org/academic\\_affairs/dual-credit/](http://www2.iccb.org/academic_affairs/dual-credit/)
- Illinois State Board of Education. (2020). Professional Educator License. Springfield, IL: Illinois State Board of Education. <https://www.isbe.net/Pages/Professional-Educator-License.aspx>

---

**APPENDIX A**

---

*Unduplicated Enrollment Counts*

- A-1 Dual Credit Headcount Enrollment by College, FY 2019-2023
- A-2 Dual Credit Headcount Enrollment vs. Overall Credit Enrollment by College, FY 2023
- A-3 Dual Credit Headcount Enrollment by Gender and by College, FY 2023
- A-4 Dual Credit Headcount Enrollment by Ethnic Origin and by College, FY 2023
- A-5 Dual Credit Headcount Enrollment by Number of Enrolled Hours and by College, FY 2023

---

**APPENDIX B**

---

*Duplicated Course and Enrollment Counts*

- B-1 Dual Credit Course Count by College, FY 2019-2023
- B-2 Dual Credit Course Enrollment by College, FY 2019-2023
- B-3 Average Dual Credit Class Size by College, FY 2019-2023
- B-4 Top Ten Dual Credit Course Enrollments by CIP, FY 2019-2023
- B-5 Dual Credit Course Count by College in Transfer Education, FY 2019-2023
- B-6 Dual Credit Course Enrollment by College in Transfer Education, FY 2019-2023
- B-7 Average Dual Credit Class Size by College in Transfer Education, FY 2019-2023
- B-8 Top Five Dual Credit Course Enrollments by College in Transfer Education, FY 2023
- B-9 Dual Credit Course Count by College in Career and Technical Education, FY 2019-2023
- B-10 Dual Credit Course Enrollment by College in Career and Technical Education, FY 2019-2023
- B-11 Average Dual Credit Class Size by College in Career and Technical Education, FY 2019-2023
- B-12 Top Five Dual Credit Course Enrollments by College in Career and Technical Education, FY 2023
- B-13 Dual Credit Course Enrollment by 6-digit CIP, FY 2019-2023
- B-14 Dual Credit Course Enrollment by 2-digit CIP, FY 2019-2023
- B-15 Dual Credit Course Enrollment by Career Cluster, FY 2019-2023
- B-16 Dual Credit Course Enrollment by Instructional Site and by College, FY 2023

---

APPENDIX C

---

*Illinois Community Colleges by Geographic Regions*

**Chicago:** Harold Washington College, Harry S Truman College, Kennedy-King College, Malcolm X College, Olive-Harvey College, Richard J. Daley College, Wilbur Wright College

**North:** College of DuPage, College of Lake County, Elgin Community College, Harper College, Highland Community College, Kishwaukee College, McHenry County College, Moraine Valley Community College, Morton College, Oakton Community College, Prairie State College, Rock Valley College, Sauk Valley Community College, South Suburban College, Triton College, Waubensee Community College

**Central:** Black Hawk College, Carl Sandburg College, Danville Area Community College, Heartland Community College, Illinois Central College, Illinois Valley Community College, John Wood Community College, Joliet Junior College, Kankakee Community College, Lincoln Land Community College, Parkland College, Richland Community College, Spoon River College

**South:** Frontier Community College, John A. Logan College, Kaskaskia College, Lake Land College, Lewis and Clark Community College, Lincoln Trail College, Olney Central College, Rend Lake College, Shawnee Community College, Southeastern Illinois College, Southwestern Illinois College, Wabash Valley College





Illinois Community College Board  
Table A-1  
DUAL CREDIT HEADCOUNT ENROLLMENT BY COLLEGE  
FISCAL YEARS 2019-2023

Dist. No. District/College	FY 2019 Headcount	FY 2020 Headcount	FY 2021 Headcount	FY 2022 Headcount	FY 2023 Headcount	% Change 2019-2023	% Change 2022-2023
503 Black Hawk	1,277	1,212	1,251	1,197	1,279	0.2%	6.9%
518 Carl Sandburg	568	580	625	618	629	10.7%	1.8%
508 City Colleges of Chicago	(4,188)	(4,337)	(3,828)	(4,717)	(5,698)	(36.1%)	(20.8%)
02 Harold Washington	615	727	715	933	1,029	67.3%	10.3%
04 Harry S Truman	263	299	399	394	550	109.1%	39.6%
01 Kennedy-King	438	276	258	371	547	24.9%	47.4%
03 Malcolm X	506	369	293	453	646	27.7%	42.6%
05 Olive-Harvey	388	414	337	441	476	22.7%	7.9%
06 Richard J. Daley	951	1,014	775	976	1,148	20.7%	17.6%
07 Wilbur Wright	1,027	1,238	1,051	1,149	1,302	26.8%	13.3%
502 College of DuPage	5,771	5,694	5,154	5,847	7,391	28.1%	26.4%
532 College of Lake County	1,343	1,841	1,551	2,228	3,073	128.8%	37.9%
507 Danville Area	973	1,018	719	729	793	-18.5%	8.8%
509 Elgin	349	380	845	1,031	1,562	347.6%	51.5%
512 Harper	3,915	4,605	5,120	4,982	5,300	35.4%	6.4%
540 Heartland	1,433	1,595	1,792	1,941	1,981	38.2%	2.1%
519 Highland	784	934	814	1,072	983	25.4%	-8.3%
514 Illinois Central	2,269	2,312	2,141	2,252	2,179	-4.0%	-3.2%
529 Illinois Eastern	(1,251)	(1,224)	(1,249)	(1,201)	(1,167)	(-6.7%)	(-2.8%)
04 Frontier	590	569	618	367	434	-26.4%	18.3%
01 Lincoln Trail	198	223	223	207	252	27.3%	21.7%
02 Olney Central	215	229	226	363	256	19.1%	-29.5%
03 Wabash Valley	248	203	182	264	225	-9.3%	-14.8%
513 Illinois Valley	852	825	719	786	831	-2.5%	5.7%
530 John A. Logan	1,020	1,011	1,079	1,136	914	-10.4%	-19.5%
539 John Wood	283	233	261	250	355	25.4%	42.0%
525 Joliet Junior	4,560	4,773	4,500	4,965	5,057	10.9%	1.9%
520 Kankakee	624	659	671	656	656	5.1%	0.0%
501 Kaskaskia	2,149	2,145	1,949	2,415	2,619	21.9%	8.4%
523 Kishwaukee	593	650	693	622	714	20.4%	14.8%
517 Lake Land	1,547	1,536	1,438	1,498	1,405	-9.2%	-6.2%
536 Lewis and Clark	3,813	3,752	2,578	1,896	1,942	-49.1%	2.4%
526 Lincoln Land	1,573	1,531	1,538	1,555	1,827	16.1%	17.5%
528 McHenry County	2,090	2,414	3,459	4,678	4,837	131.4%	3.4%
524 Moraine Valley	3,386	3,613	3,393	3,898	4,187	23.7%	7.4%
527 Morton	898	914	548	920	1,094	21.8%	18.9%
535 Oakton	1,828	2,635	2,493	2,860	3,429	87.6%	19.9%
505 Parkland	1,163	1,019	868	862	1,006	-13.5%	16.7%
515 Prairie State	678	717	449	656	463	-31.7%	-29.4%
521 Rend Lake	1,003	933	792	840	749	-25.3%	-10.8%
537 Richland	933	1,021	897	935	995	6.6%	6.4%
511 Rock Valley	584	691	844	1,237	604	3.4%	-51.2%
506 Sauk Valley	686	713	633	641	639	-6.9%	-0.3%
531 Shawnee	420	425	394	330	478	13.8%	44.8%
510 South Suburban	1,806	2,463	2,305	3,373	3,587	98.6%	6.3%
533 Southeastern Illinois	801	858	801	777	796	-0.6%	2.4%
522 Southwestern Illinois	2,878	3,236	2,961	4,074	4,654	61.7%	14.2%
534 Spoon River	326	344	340	336	420	28.8%	25.0%
504 Triton	1,244	1,939	2,314	2,365	2,657	113.6%	12.3%
516 Waubensee	<u>2,247</u>	<u>2,517</u>	<u>2,782</u>	<u>3,131</u>	<u>3,652</u>	<u>62.5%</u>	<u>16.6%</u>
TOTALS/AVERAGES	64,106	69,299	66,788	75,507	82,602	28.9%	9.4%

SOURCE OF DATA: ICCB Centralized Data System--Annual Enrollment and Completion (A1) Data



Illinois Community College Board  
Table A-2  
DUAL CREDIT HEADCOUNT ENROLLMENT VS.  
OVERALL CREDIT ENROLLMENT BY COLLEGE  
FISCAL YEAR 2023

Dist.			
<u>No.</u>	<u>District/College</u>	<u>Dual Credit</u>	<u>Total Credit</u>
			<u>% Dual Credit</u>
503	Black Hawk	1,279	5,795
518	Carl Sandburg	629	2,295
508	City Colleges of Chicago	(5,698)	(55,040)
02	Harold Washington	1,029	8,156
04	Harry S Truman	550	9,278
01	Kennedy-King	547	3,358
03	Malcolm X	646	10,712
05	Olive-Harvey	476	3,582
06	Richard J. Daley	1,148	8,067
07	Wilbur Wright	1,302	11,887
502	College of DuPage	7,391	37,930
532	College of Lake County	3,073	20,509
507	Danville Area	793	3,153
509	Elgin	1,562	13,863
512	Harper	5,300	21,901
540	Heartland	1,981	7,565
519	Highland	983	2,684
514	Illinois Central	2,179	9,920
529	Illinois Eastern	(1,167)	(17,950)
04	Frontier	434	14,619
01	Lincoln Trail	252	781
02	Olney Central	256	1,230
03	Wabash Valley	225	1,320
513	Illinois Valley	831	3,887
530	John A. Logan	914	6,115
539	John Wood	355	2,554
525	Joliet Junior	5,057	19,810
520	Kankakee	656	3,754
501	Kaskaskia	2,619	5,715
523	Kishwaukee	714	3,591
517	Lake Land	1,405	8,125
536	Lewis and Clark	1,942	5,498
526	Lincoln Land	1,827	8,984
528	McHenry County	4,837	13,282
524	Moraine Valley	4,187	17,617
527	Morton	1,094	5,542
535	Oakton	3,429	16,018
505	Parkland	1,006	8,984
515	Prairie State	463	6,053
521	Rend Lake	749	3,270
537	Richland	995	3,885
511	Rock Valley	604	7,769
506	Sauk Valley	639	2,402
531	Shawnee	478	2,798
510	South Suburban	3,587	7,724
533	Southeastern Illinois	796	3,099
522	Southwestern Illinois	4,654	14,786
534	Spoon River	420	1,726
504	Triton	2,657	15,090
516	Waubonsee	3,652	14,534
	TOTALS	82,602	411,217
			20.1%

SOURCE OF DATA: ICCB Centralized Data System--Annual Enrollment and Completion (A1) Data



Illinois Community College Board

Table A-3

DUAL CREDIT HEADCOUNT ENROLLMENT BY GENDER\* AND BY COLLEGE  
FISCAL YEAR 2023

Dist.				
<u>No.</u>	<u>District/College</u>	<u>Male</u>	<u>Female</u>	<u>Unknown or Another Gender</u>
				<u>Total</u>
503	Black Hawk	505	768	6
518	Carl Sandburg	251	374	4
508	City Colleges of Chicago	(2,410)	(3,276)	(12)
02	Harold Washington	445	583	1
04	Harry S Truman	248	301	1
01	Kennedy-King	223	324	0
03	Malcolm X	220	425	1
05	Olive-Harvey	186	287	3
06	Richard J. Daley	523	621	4
07	Wilbur Wright	565	735	2
502	College of DuPage	3,525	3,696	170
532	College of Lake County	1,506	1,527	40
507	Danville Area	337	426	30
509	Elgin	595	938	29
512	Harper	2,404	2,860	36
540	Heartland	880	1,089	12
519	Highland	459	505	19
514	Illinois Central	866	1,313	0
529	Illinois Eastern	(536)	(629)	(2)
04	Frontier	200	234	0
01	Lincoln Trail	105	146	1
02	Olney Central	113	142	1
03	Wabash Valley	118	107	0
513	Illinois Valley	312	506	13
530	John A. Logan	374	519	21
539	John Wood	137	210	8
525	Joliet Junior	2,337	2,720	0
520	Kankakee	353	300	3
501	Kaskaskia	1,228	1,308	83
523	Kishwaukee	293	400	21
517	Lake Land	648	755	2
536	Lewis and Clark	959	978	5
526	Lincoln Land	880	928	19
528	McHenry County	2,320	2,517	0
524	Moraine Valley	2,503	1,681	3
527	Morton	616	474	4
535	Oakton	1,974	1,387	68
505	Parkland	455	533	18
515	Prairie State	286	162	15
521	Rend Lake	345	404	0
537	Richland	450	543	2
511	Rock Valley	200	402	2
506	Sauk Valley	286	351	2
531	Shawnee	188	289	1
510	South Suburban	1,825	1,762	0
533	Southeastern Illinois	379	415	2
522	Southwestern Illinois	2,197	2,260	197
534	Spoon River	165	255	0
504	Triton	1,510	1,112	35
516	Waubensee	<u>1,791</u>	<u>1,861</u>	<u>0</u>
	TOTALS	39,285	42,433	884
				82,602

\*Gender classifications align with U.S. Department of Education collection and reporting standards.  
SOURCE OF DATA: ICCB Centralized Data System--Annual Enrollment and Completion (A1) Data



Illinois Community College Board  
Table A-4  
DUAL CREDIT HEADCOUNT ENROLLMENT BY ETHNIC ORIGIN AND BY COLLEGE  
FISCAL YEAR 2023

Dist. No. District/College	Asian	Native American	African American Non-Latino	Latino	White Non-Latino	U.S. Non- Resident	Pacific Islander	Two or More Races	All Other or No Indication	Total
503 Black Hawk	33	0	66	162	931	0	1	36	50	1,279
518 Carl Sandburg	4	1	10	51	528	0	1	20	14	629
508 City Colleges of Chicago	(299)	(10)	(1,937)	(2,747)	(485)	(22)	(1)	(173)	(24)	(5,698)
02 Harold Washington	18	3	694	228	25	2	0	51	8	1,029
04 Harry S Truman	78	0	84	259	98	6	0	24	1	550
01 Kennedy-King	2	2	325	188	5	2	0	17	6	547
03 Malcolm X	23	3	281	277	40	0	0	19	3	646
05 Olive-Harvey	6	2	302	143	5	1	0	15	2	476
06 Richard J. Daley	31	0	163	899	40	2	0	10	3	1,148
07 Wilbur Wright	141	0	88	753	272	9	1	37	1	1,302
502 College of DuPage	1,023	65	505	576	3,998	1	29	101	1,093	7,391
532 College of Lake County	168	5	179	1,053	1,406	5	5	117	135	3,073
507 Danville Area	5	0	84	7	601	0	0	27	69	793
509 Elgin	174	4	36	572	679	16	0	67	14	1,562
512 Harper	988	27	163	1,406	2,236	0	92	243	145	5,300
540 Heartland	84	3	82	127	1,537	2	0	110	36	1,981
519 Highland	5	9	22	87	817	0	2	18	23	983
514 Illinois Central	69	3	71	88	1,821	14	1	112	0	2,179
529 Illinois Eastern	(12)	(2)	(7)	(21)	(1,051)	(0)	(2)	(17)	(55)	(1,167)
04 Frontier	4	2	1	8	405	0	1	12	1	434
01 Lincoln Trail	1	0	3	4	230	0	1	0	13	252
02 Olney Central	4	0	0	5	206	0	0	1	40	256
03 Wabash Valley	3	0	3	4	210	0	0	4	1	225
513 Illinois Valley	10	1	13	116	627	0	3	10	51	831
530 John A. Logan	15	0	44	34	607	1	0	19	194	914
539 John Wood	5	1	5	3	329	0	0	3	9	355
525 Joliet Junior	164	55	403	1,125	2,946	1	10	102	251	5,057
520 Kankakee	6	2	52	114	443	0	0	27	12	656
501 Kaskaskia	13	12	23	21	2,291	0	0	97	162	2,619
523 Kishwaukee	17	3	26	157	450	0	0	34	27	714
517 Lake Land	12	2	15	46	1,274	0	2	35	19	1,405
536 Lewis and Clark	39	4	77	43	1,571	0	2	25	181	1,942
526 Lincoln Land	39	25	107	99	1,377	0	3	68	109	1,827
528 McHenry County	108	32	69	1,069	3,393	2	1	146	17	4,837
524 Moraine Valley	187	13	462	1,124	1,914	0	0	114	373	4,187
527 Morton	4	2	1	753	9	0	0	0	325	1,094
535 Oakton	738	13	80	446	1,824	20	8	180	120	3,429
505 Parkland	61	2	60	74	710	2	2	65	30	1,006
515 Prairie State	1	5	183	75	152	0	0	24	23	463
521 Rend Lake	6	4	20	12	686	0	2	13	6	749
537 Richland	9	6	140	44	744	0	2	37	13	995
511 Rock Valley	38	2	39	147	343	0	1	18	16	604
506 Sauk Valley	4	3	8	75	500	0	0	17	32	639
531 Shawnee	6	9	43	26	338	0	0	0	56	478
510 South Suburban	57	23	1,681	993	595	0	3	70	165	3,587
533 Southeastern Illinois	5	2	9	17	721	1	0	26	15	796
522 Southwestern Illinois	58	14	612	351	3,065	4	10	285	255	4,654
534 Spoon River	4	0	13	10	385	0	1	7	0	420
504 Triton	131	5	135	1,059	1,112	18	0	98	99	2,657
516 Waubonsee	<u>230</u>	<u>6</u>	<u>190</u>	<u>1,023</u>	<u>1,988</u>	<u>0</u>	<u>8</u>	<u>50</u>	<u>157</u>	<u>3,652</u>
TOTALS	4,831	375	7,672	15,953	46,484	109	192	2,611	4,375	82,602

SOURCE OF DATA: ICCB Centralized Data System--Annual Enrollment and Completion (A1) Data



Illinois Community College Board  
Table A-5  
DUAL CREDIT HEADCOUNT ENROLLMENT  
BY NUMBER OF ENROLLED HOURS AND BY COLLEGE  
FISCAL YEAR 2023

Dist.						
No.	District/College	>0-3.99	4-6.99	7-9.99	10-12.99	13 or More
						Total
503	Black Hawk	290	391	286	141	171
518	Carl Sandburg	116	180	101	93	139
508	City Colleges of Chicago	(1,215)	(2,701)	(801)	(591)	(390)
02	Harold Washington	220	449	142	165	53
04	Harry S Truman	199	248	41	36	26
01	Kennedy-King	199	215	65	29	39
03	Malcolm X	177	317	80	47	25
05	Olive-Harvey	67	197	122	32	58
06	Richard J. Daley	145	475	231	167	130
07	Wilbur Wright	208	800	120	115	59
502	College of DuPage	4,780	1,945	334	147	185
532	College of Lake County	1,505	898	529	47	94
507	Danville Area	93	314	102	116	168
509	Elgin	316	516	248	113	369
512	Harper	1,906	2,214	759	270	151
540	Heartland	690	504	340	209	238
519	Highland	350	374	176	73	10
514	Illinois Central	469	726	394	291	299
529	Illinois Eastern	(168)	(244)	(160)	(180)	(415)
04	Frontier	100	85	56	59	134
01	Lincoln Trail	16	29	42	59	106
02	Olney Central	17	58	31	38	112
03	Wabash Valley	35	72	31	24	63
513	Illinois Valley	323	287	111	49	61
530	John A. Logan	397	264	170	59	24
539	John Wood	105	147	31	52	20
525	Joliet Junior	2,209	1,903	537	298	110
520	Kankakee	113	383	125	21	14
501	Kaskaskia	883	739	386	214	397
523	Kishwaukee	256	226	106	61	65
517	Lake Land	274	437	208	194	292
536	Lewis and Clark	641	488	282	223	308
526	Lincoln Land	530	764	263	182	88
528	McHenry County	1,527	1,047	758	465	1,040
524	Moraine Valley	2,747	997	367	61	15
527	Morton	573	319	173	21	8
535	Oakton	1,335	1,651	292	103	48
505	Parkland	109	405	170	166	156
515	Prairie State	301	135	22	4	1
521	Rend Lake	180	227	83	79	180
537	Richland	414	252	75	98	156
511	Rock Valley	209	78	55	23	239
506	Sauk Valley	176	115	201	86	61
531	Shawnee	51	86	34	75	232
510	South Suburban	2,610	857	89	8	23
533	Southeastern Illinois	343	147	79	58	169
522	Southwestern Illinois	2,353	1,333	416	250	302
534	Spoon River	83	111	102	41	83
504	Triton	1,394	788	381	71	23
516	Waubonsee	1,491	1,196	444	235	286
	TOTALS	33,525	26,389	10,190	5,468	7,030
						82,602

SOURCE OF DATA: ICCB Centralized Data System--Annual Enrollment and Completion (A1) Data





Illinois Community College Board  
Table B-1  
DUAL CREDIT COURSE COUNT BY COLLEGE  
FOR FISCAL YEARS 2019-2023

Dist.						FY 2021-2023 3-Year Average	FY 2022-2023 1-Year Difference		FY 2019-2023 5-Year Difference	
No. District/College	2019	2020	2021	2022	2023	Number	Number	Percent	Number	Percent
503 Black Hawk	401	371	464	423	410	432	-13	-3.1%	9	2.2%
518 Carl Sandburg	315	410	412	437	420	423	-17	-3.9%	105	33.3%
508 City Colleges of Chicago	(606)	(655)	(726)	(903)	(1,126)	(918)	(223)	(24.7%)	(520)	(85.8%)
02 Harold Washington	124	125	137	192	227	185	35	18.2%	103	83.1%
04 Harry S Truman	41	61	74	81	120	92	39	48.1%	79	192.7%
01 Kennedy-King	63	70	75	117	159	117	42	35.9%	96	152.4%
03 Malcolm X	80	92	116	118	172	135	54	45.8%	92	115.0%
05 Olive-Harvey	88	69	80	96	115	97	19	19.8%	27	30.7%
06 Richard J. Daley	122	134	134	155	185	158	30	19.4%	63	51.6%
07 Wilbur Wright	88	104	110	144	148	134	4	2.8%	60	68.2%
502 College of DuPage	462	447	508	541	671	573	130	24.0%	209	45.2%
532 College of Lake County	164	224	235	281	336	284	55	19.6%	172	104.9%
507 Danville Area	489	505	481	463	498	481	35	7.6%	9	1.8%
509 Elgin	382	448	540	659	744	648	85	12.9%	362	94.8%
512 Harper	372	408	457	468	493	473	25	5.3%	121	32.5%
540 Heartland	307	339	403	379	492	425	113	29.8%	185	60.3%
519 Highland	117	137	145	172	147	155	-25	-14.5%	30	25.6%
514 Illinois Central	271	288	307	340	333	327	-7	-2.1%	62	22.9%
529 Illinois Eastern	(521)	(573)	(643)	(480)	(708)	(610)	(228)	(47.5%)	(187)	(35.9%)
04 Frontier	212	228	270	142	230	214	88	62.0%	18	8.5%
01 Lincoln Trail	125	152	160	99	180	146	81	81.8%	55	44.0%
02 Olney Central	76	108	97	136	156	130	20	14.7%	80	105.3%
03 Wabash Valley	108	85	116	103	142	120	39	37.9%	34	31.5%
513 Illinois Valley	148	166	141	133	136	137	3	2.3%	-12	-8.1%
530 John A. Logan	124	149	152	150	153	152	3	2.0%	29	23.4%
539 John Wood	79	78	194	72	98	121	26	36.1%	19	24.1%
525 Joliet Junior	436	433	448	510	460	473	-50	-9.8%	24	5.5%
520 Kankakee	48	49	57	51	54	54	3	5.9%	6	12.5%
501 Kaskaskia	357	348	276	309	324	303	15	4.9%	-33	-9.2%
523 Kishwaukee	105	113	123	117	118	119	1	0.9%	13	12.4%
517 Lake Land	384	344	301	329	326	319	-3	-0.9%	-58	-15.1%
536 Lewis and Clark	533	540	417	308	332	352	24	7.8%	-201	-37.7%
526 Lincoln Land	202	198	228	236	251	238	15	6.4%	49	24.3%
528 McHenry County	152	186	293	416	543	417	127	30.5%	391	257.2%
524 Moraine Valley	258	331	353	398	414	388	16	4.0%	156	60.5%
527 Morton	84	91	71	86	125	94	39	45.3%	41	48.8%
535 Oakton	129	225	219	252	274	248	22	8.7%	145	112.4%
505 Parkland	316	286	381	296	292	323	-4	-1.4%	-24	-7.6%
515 Prairie State	52	82	59	51	53	54	2	3.9%	1	1.9%
521 Rend Lake	234	180	150	173	157	160	-16	-9.2%	-77	-32.9%
537 Richland	262	280	277	301	306	295	5	1.7%	44	16.8%
511 Rock Valley	702	684	831	749	655	745	-94	-12.6%	-47	-6.7%
506 Sauk Valley	340	340	335	288	315	313	27	9.4%	-25	-7.4%
531 Shawnee	67	69	77	71	144	97	73	102.8%	77	114.9%
510 South Suburban	216	212	203	300	319	274	19	6.3%	103	47.7%
533 Southeastern Illinois	233	249	241	215	218	225	3	1.4%	-15	-6.4%
522 Southwestern Illinois	1,160	1,120	1,128	1,090	1,157	1,125	67	6.1%	-3	-0.3%
534 Spoon River	146	157	155	162	185	167	23	14.2%	39	26.7%
504 Triton	258	339	359	378	196	311	-182	-48.1%	-62	-24.0%
516 Waubensee	473	515	524	556	655	578	99	17.8%	182	38.5%
TOTALS	11,905	12,569	13,314	13,543	14,638	13,832	1,095	8.1%	2,733	23.0%
Pure										
Minimum	41	49	57	51	53	54	-182	-48.1%	-201	-37.7%
Maximum	1,160	1,120	1,128	1,090	1,157	1,125	130	102.8%	391	257.2%
Median	207	218	232	244	241	243	21	7.0%	40	26.2%
Standard Deviation	203	198	208	206	214	206	52	25.1%	101	58.1%
Average	248	262	277	282	305	288	23	14.5%	57	41.2%

SOURCE OF DATA: ICCB Centralized Data System--Annual Course (AC) Data



Illinois Community College Board  
Table B-2  
DUAL CREDIT COURSE ENROLLMENT BY COLLEGE  
FOR FISCAL YEARS 2019-2023

Dist.		FY 2021-2023					FY 2022-2023		FY 2019-2023		
No.	District/College	2019	2020	2021	2022	2023	3-Year Average Number	1-Year Difference Number	Percent	5-Year Difference Number	Percent
503	Black Hawk	3,382	3,245	3,265	3,117	3,467	3,283	350	11.2%	85	2.5%
518	Carl Sandburg	1,878	2,207	2,244	2,307	2,194	2,248	-113	-4.9%	316	16.8%
508	City Colleges of Chicago	(7,135)	(7,629)	(6,555)	(8,744)	(11,183)	(8,827)	(2,439)	(27.9%)	(4,048)	(56.7%)
02	Harold Washington	1,326	1,455	1,360	1,971	2,276	1,869	305	15.5%	950	71.6%
04	Harry S Truman	370	404	512	483	862	619	379	78.5%	492	133.0%
01	Kennedy-King	736	516	340	560	1,086	662	526	93.9%	350	47.6%
03	Malcolm X	718	653	529	722	1,122	791	400	55.4%	404	56.3%
05	Olive-Harvey	894	842	636	828	1,050	838	222	26.8%	156	17.4%
06	Richard J. Daley	1,725	1,934	1,516	2,170	2,597	2,094	427	19.7%	872	50.6%
07	Wilbur Wright	1,366	1,825	1,662	2,010	2,190	1,954	180	9.0%	824	60.3%
502	College of DuPage	8,031	7,838	6,982	8,065	10,992	8,680	2,927	36.3%	2,961	36.9%
532	College of Lake County	1,907	2,618	2,175	3,088	4,487	3,250	1,399	45.3%	2,580	135.3%
507	Danville Area	2,735	2,777	2,127	2,263	2,629	2,340	366	16.2%	-106	-3.9%
509	Elgin	1,830	2,509	3,217	3,755	4,732	3,901	977	26.0%	2,902	158.6%
512	Harper	5,432	6,545	7,563	7,729	8,382	7,891	653	8.4%	2,950	54.3%
540	Heartland	3,013	3,044	4,055	3,860	4,303	4,073	443	11.5%	1,290	42.8%
519	Highland	1,353	1,578	1,261	1,823	1,514	1,533	-309	-17.0%	161	11.9%
514	Illinois Central	5,300	5,587	5,414	6,130	5,787	5,777	-343	-5.6%	487	9.2%
529	Illinois Eastern	(4,307)	(4,333)	(4,529)	(3,785)	(4,160)	(4,158)	(375)	(9.9%)	(-147)	(-3.4%)
04	Frontier	2,054	2,103	2,278	1,159	1,388	1,608	229	19.8%	-666	-32.4%
01	Lincoln Trail	755	780	960	686	948	865	262	38.2%	193	25.6%
02	Olney Central	715	831	697	1,191	1,045	978	-146	-12.3%	330	46.2%
03	Wabash Valley	783	619	594	749	779	707	30	4.0%	-4	-0.5%
513	Illinois Valley	1,746	1,574	1,331	1,513	1,590	1,478	77	5.1%	-156	-8.9%
530	John A. Logan	2,088	2,457	2,567	2,531	2,442	2,513	-89	-3.5%	354	17.0%
539	John Wood	589	492	714	478	734	642	256	53.6%	145	24.6%
525	Joliet Junior	7,233	7,638	7,063	8,185	8,089	7,779	-96	-1.2%	856	11.8%
520	Kankakee	805	865	944	936	1,010	963	74	7.9%	205	25.5%
501	Kaskaskia	4,895	5,088	4,953	5,944	6,459	5,785	515	8.7%	1,564	32.0%
523	Kishwaukee	1,197	1,431	1,511	1,471	1,502	1,495	31	2.1%	305	25.5%
517	Lake Land	3,826	3,800	3,693	3,748	3,701	3,714	-47	-1.3%	-125	-3.3%
536	Lewis and Clark	8,842	8,656	5,909	4,321	4,158	4,796	-163	-3.8%	-4,684	-53.0%
526	Lincoln Land	3,017	2,944	2,855	2,788	3,325	2,989	537	19.3%	308	10.2%
528	McHenry County	2,808	3,613	6,076	9,069	11,995	9,047	2,926	32.3%	9,187	327.2%
524	Moraine Valley	4,610	4,829	4,278	5,618	5,780	5,225	162	2.9%	1,170	25.4%
527	Morton	1,150	1,260	786	1,259	1,573	1,206	314	24.9%	423	36.8%
535	Oakton	2,314	3,259	3,160	3,684	4,419	3,754	735	20.0%	2,105	91.0%
505	Parkland	2,576	2,155	2,415	2,303	2,607	2,442	304	13.2%	31	1.2%
515	Prairie State	763	748	527	717	635	626	-82	-11.4%	-128	-16.8%
521	Rend Lake	3,219	2,618	2,442	2,442	2,229	2,371	-213	-8.7%	-990	-30.8%
537	Richland	2,005	2,167	1,845	2,160	2,353	2,119	193	8.9%	348	17.4%
511	Rock Valley	3,111	2,831	3,660	3,514	2,506	3,227	-1,008	-28.7%	-605	-19.4%
506	Sauk Valley	1,642	1,811	1,679	1,566	1,608	1,618	42	2.7%	-34	-2.1%
531	Shawnee	988	1,007	1,136	934	1,467	1,179	533	57.1%	479	48.5%
510	South Suburban	2,506	3,377	2,658	4,208	4,352	3,739	144	3.4%	1,846	73.7%
533	Southeastern Illinois	1,444	1,678	1,551	1,462	1,952	1,655	490	33.5%	508	35.2%
522	Southwestern Illinois	7,709	7,911	6,809	8,865	10,009	8,561	1,144	12.9%	2,300	29.8%
534	Spoon River	737	909	901	959	1,211	1,024	252	26.3%	474	64.3%
504	Triton	2,127	3,084	4,323	4,434	4,284	4,347	-150	-3.4%	2,157	101.4%
516	Waubonsee	4,364	5,282	5,770	6,616	7,463	6,616	847	12.8%	3,099	71.0%
TOTALS		124,614	133,394	130,943	146,391	163,283	146,872	16,892	11.5%	38,669	31.0%
Pure											
Minimum		370	404	340	478	635	619	-1,008	-28.7%	-4,684	-53.0%
Maximum		8,842	8,656	7,563	9,069	11,995	9,047	2,927	93.9%	9,187	327.2%
Median		1,956	2,187	2,210	2,283	2,398	2,294	254	11.4%	379	25.5%
Standard Deviation		2,084	2,145	2,047	2,418	2,805	2,385	676	23.8%	1,774	60.2%
Average		2,596	2,779	2,728	3,050	3,402	3,060	352	15.9%	806	39.1%

SOURCE OF DATA: ICCB Centralized Data System--Annual Course (AC) Data



Illinois Community College Board  
Table B-3  
AVERAGE DUAL CREDIT CLASS SIZE BY COLLEGE  
FOR FISCAL YEARS 2019-2023

Dist.					FY 2021-2023 3-Year Average		FY 2022-2023 1-Year Difference		FY 2019-2023 5-Year Difference	
No. District/College	2019	2020	2021	2022	2023	Number	Number	Percent	Number	Percent
503 Black Hawk	8.4	8.7	7.0	7.4	8.5	7.6	1.1	14.8%	0.0	0.3%
518 Carl Sandburg	6.0	5.4	5.4	5.3	5.2	5.3	-0.1	-1.0%	-0.7	-12.4%
508 City Colleges of Chicago	(11.8)	(11.6)	(9.0)	(9.7)	(9.9)	(9.5)	(0.2)	(2.6%)	(-1.8)	(-15.6%)
02 Harold Washington	10.7	11.6	9.9	10.3	10.0	10.1	-0.2	-2.3%	-0.7	-6.2%
04 Harry S Truman	9.0	6.6	6.9	6.0	7.2	6.7	1.2	20.5%	-1.8	-20.4%
01 Kennedy-King	11.7	7.4	4.5	4.8	6.8	5.4	2.0	42.7%	-4.9	-41.5%
03 Malcolm X	9.0	7.1	4.6	6.1	6.5	5.7	0.4	6.6%	-2.5	-27.3%
05 Olive-Harvey	10.2	12.2	8.0	8.6	9.1	8.6	0.5	5.9%	-1.0	-10.1%
06 Richard J. Daley	14.1	14.4	11.3	14.0	14.0	13.1	0.0	0.3%	-0.1	-0.7%
07 Wilbur Wright	15.5	17.5	15.1	14.0	14.8	14.6	0.8	6.0%	-0.7	-4.7%
502 College of DuPage	17.4	17.5	13.7	14.9	16.4	15.0	1.5	9.9%	-1.0	-5.8%
532 College of Lake County	11.6	11.7	9.3	11.0	13.4	11.2	2.4	21.5%	1.7	14.8%
507 Danville Area	5.6	5.5	4.4	4.9	5.3	4.9	0.4	8.0%	-0.3	-5.6%
509 Elgin	4.8	5.6	6.0	5.7	6.4	6.0	0.7	11.6%	1.6	32.8%
512 Harper	14.6	16.0	16.5	16.5	17.0	16.7	0.5	2.9%	2.4	16.4%
540 Heartland	9.8	9.0	10.1	10.2	8.7	9.7	-1.4	-14.1%	-1.1	-10.9%
519 Highland	11.6	11.5	8.7	10.6	10.3	9.9	-0.3	-2.8%	-1.3	-10.9%
514 Illinois Central	19.6	19.4	17.6	18.0	17.4	17.7	-0.7	-3.6%	-2.2	-11.1%
529 Illinois Eastern	(8.3)	(7.6)	(7.0)	(7.9)	(5.9)	(6.9)	(-2.0)	(-25.5%)	(-2.4)	(-28.9%)
04 Frontier	9.7	9.2	8.4	8.2	6.0	7.5	-2.1	-26.1%	-3.7	-37.7%
01 Lincoln Trail	6.0	5.1	6.0	6.9	5.3	6.1	-1.7	-24.0%	-0.8	-12.8%
02 Olney Central	9.4	7.7	7.2	8.8	6.7	7.5	-2.1	-23.5%	-2.7	-28.8%
03 Wabash Valley	7.3	7.3	5.1	7.3	5.5	6.0	-1.8	-24.6%	-1.8	-24.3%
513 Illinois Valley	11.8	9.5	9.4	11.4	11.7	10.8	0.3	2.8%	-0.1	-0.9%
530 John A. Logan	16.8	16.5	16.9	16.9	16.0	16.6	-0.9	-5.4%	-0.9	-5.2%
539 John Wood	7.5	6.3	3.7	6.6	7.5	5.9	0.9	12.8%	0.0	0.5%
525 Joliet Junior	16.6	17.6	15.8	16.0	17.6	16.5	1.5	9.6%	1.0	6.0%
520 Kankakee	16.8	17.7	16.6	18.4	18.7	17.9	0.4	1.9%	1.9	11.5%
501 Kaskaskia	13.7	14.6	17.9	19.2	19.9	19.0	0.7	3.6%	6.2	45.4%
523 Kishwaukee	11.4	12.7	12.3	12.6	12.7	12.5	0.2	1.2%	1.3	11.7%
517 Lake Land	10.0	11.0	12.3	11.4	11.4	11.7	0.0	-0.3%	1.4	13.9%
536 Lewis and Clark	16.6	16.0	14.2	14.0	12.5	13.6	-1.5	-10.7%	-4.1	-24.5%
526 Lincoln Land	14.9	14.9	12.5	11.8	13.2	12.5	1.4	12.1%	-1.7	-11.3%
528 McHenry County	18.5	19.4	20.7	21.8	22.1	21.5	0.3	1.3%	3.6	19.6%
524 Moraine Valley	17.9	14.6	12.1	14.1	14.0	13.4	-0.2	-1.1%	-3.9	-21.9%
527 Morton	13.7	13.8	11.1	14.6	12.6	12.8	-2.1	-14.0%	-1.1	-8.1%
535 Oakton	17.9	14.5	14.4	14.6	16.1	15.1	1.5	10.3%	-1.8	-10.1%
505 Parkland	8.2	7.5	6.3	7.8	8.9	7.7	1.1	14.8%	0.8	9.5%
515 Prairie State	14.7	9.1	8.9	14.1	12.0	11.7	-2.1	-14.8%	-2.7	-18.3%
521 Rend Lake	13.8	14.5	16.3	14.1	14.2	14.9	0.1	0.6%	0.4	3.2%
537 Richland	7.7	7.7	6.7	7.2	7.7	7.2	0.5	7.2%	0.0	0.5%
511 Rock Valley	4.4	4.1	4.4	4.7	3.8	4.3	-0.9	-18.5%	-0.6	-13.7%
506 Sauk Valley	4.8	5.3	5.0	5.4	5.1	5.2	-0.3	-6.1%	0.3	5.7%
531 Shawnee	14.7	14.6	14.8	13.2	10.2	12.7	-3.0	-22.6%	-4.6	-30.9%
510 South Suburban	11.6	15.9	13.1	14.0	13.6	13.6	-0.4	-2.7%	2.0	17.6%
533 Southeastern Illinois	6.2	6.7	6.4	6.8	9.0	7.4	2.2	31.7%	2.8	44.5%
522 Southwestern Illinois	6.6	7.1	6.0	8.1	8.7	7.6	0.5	6.4%	2.0	30.2%
534 Spoon River	5.0	5.8	5.8	5.9	6.5	6.1	0.6	10.6%	1.5	29.7%
504 Triton	8.2	9.1	12.0	11.7	21.9	15.2	10.1	86.3%	13.6	165.1%
516 Waubensee	9.2	10.3	11.0	11.9	11.4	11.4	-0.5	-4.2%	2.2	23.5%
TOTALS/AVERAGES	10.5	10.6	9.8	10.8	11.2	10.6	0.3	3.2%	0.7	6.6%
Pure										
Minimum	4.4	4.1	3.7	4.7	3.8	4.3	-3.0	-26.1%	-4.9	-41.5%
Maximum	19.6	19.4	20.7	21.8	22.1	21.5	10.1	86.3%	13.6	165.1%
Median	11.0	10.7	9.7	11.2	10.8	11.0	0.3	1.6%	-0.5	-4.9%
Standard Deviation	4.3	4.4	4.5	4.4	4.7	4.4	1.9	18.7%	3.0	31.3%
Average	11.3	11.1	10.3	11.0	11.2	10.8	0.2	2.9%	0.0	1.8%

SOURCE OF DATA: ICCB Centralized Data System--Annual Course (AC) Data





Illinois Community College Board  
Table B-4  
TOP TEN DUAL CREDIT COURSE ENROLLMENTS BY CIP (BASED ON FISCAL YEAR 2023)  
FOR FISCAL YEARS 2019-2023

CIP	COURSE NAME	2019	2020	2021	2022	2023	FY 2021-2023 3-Year Average	FY 2022-2023		FY 2019-2023	
							Number	Number	Percent	Number	Percent
23.1301	Writing, General	19,798	20,961	21,259	22,122	26,363	23,248	4,241	19.2%	6,565	33.2%
27.0101	Mathematics, General	7,093	7,900	8,643	8,267	8,706	8,539	439	5.3%	1,613	22.7%
16.0905	Spanish Language and Literature	5,538	5,344	4,994	6,403	6,748	6,048	345	5.4%	1,210	21.8%
23.1304	Rhetoric and Composition	4,406	4,746	5,537	5,553	5,805	5,632	252	4.5%	1,399	31.8%
54.0102	American History (United States)	4,002	4,032	4,138	4,384	5,554	4,692	1,170	26.7%	1,552	38.8%
31.0501	Sports, Kinesiology, and Physical Education/Fitness, General	2,211	2,142	2,999	3,761	4,874	3,878	1,113	29.6%	2,663	120.4%
42.0101	Psychology, General	3,522	3,467	3,547	3,806	4,336	3,896	530	13.9%	814	23.1%
27.0501	Statistics, General	2,625	2,952	3,214	3,648	4,282	3,715	634	17.4%	1,657	63.1%
48.0508	Welding Technology/Welder	2,945	3,047	2,381	3,198	4,263	3,281	1,065	33.3%	1,318	44.8%
51.3902	Nursing Assistant/Aide and Patient Care Assistant/Aide	<u>2,730</u>	<u>2,878</u>	<u>2,695</u>	<u>3,151</u>	<u>3,390</u>	<u>3,079</u>	<u>239</u>	<u>7.6%</u>	<u>660</u>	<u>24.2%</u>
Totals		54,870	57,469	59,407	64,293	74,321	66,007	10,028	15.6%	19,451	35.4%
Grand Total		124,614	133,394	130,943	146,391	163,283	146,872	16,892	11.5%	38,669	31.0%
Percent Top Ten of Grand Total		44.0%	43.1%	45.4%	43.9%	45.5%	44.9%	1.6%	3.6%	1.5%	3.4%

SOURCE OF DATA: ICCB Centralized Data System--Annual Course (AC) Data



Illinois Community College Board  
Table B-5  
DUAL CREDIT COURSE COUNT BY COLLEGE  
IN TRANSFER EDUCATION  
FOR FISCAL YEARS 2019-2023

Dist.						FY 2021-2023 3-Year Average	FY 2022-2023 1-Year Difference		FY 2019-2023 5-Year Difference	
No. District/College	2019	2020	2021	2022	2023	Number	Number	Percent	Number	Percent
503 Black Hawk	281	247	335	287	281	301	-6	-2.1%	0	0.0%
518 Carl Sandburg	267	341	351	381	371	368	-10	-2.6%	104	39.0%
508 City Colleges of Chicago	(498)	(518)	(526)	(669)	(894)	(696)	(225)	(33.6%)	(396)	(79.5%)
02 Harold Washington	95	93	88	139	184	137	45	32.4%	89	93.7%
04 Harry S Truman	34	54	56	70	106	77	36	51.4%	72	211.8%
01 Kennedy-King	52	53	51	73	107	77	34	46.6%	55	105.8%
03 Malcolm X	71	68	82	80	133	98	53	66.3%	62	87.3%
05 Olive-Harvey	72	51	51	64	89	68	25	39.1%	17	23.6%
06 Richard J. Daley	94	105	101	120	146	122	26	21.7%	52	55.3%
07 Wilbur Wright	80	94	97	123	129	116	6	4.9%	49	61.3%
502 College of DuPage	104	94	109	105	204	139	99	94.3%	100	96.2%
532 College of Lake County	58	73	97	103	134	111	31	30.1%	76	131.0%
507 Danville Area	347	355	325	294	324	314	30	10.2%	-23	-6.6%
509 Elgin	317	400	480	595	660	578	65	10.9%	343	108.2%
512 Harper	143	180	233	218	241	231	23	10.6%	98	68.5%
540 Heartland	208	243	292	274	378	315	104	38.0%	170	81.7%
519 Highland	32	35	37	39	39	38	0	0.0%	7	21.9%
514 Illinois Central	180	196	210	227	234	224	7	3.1%	54	30.0%
529 Illinois Eastern	(311)	(346)	(421)	(271)	(436)	(376)	(165)	(60.9%)	(125)	(40.2%)
04 Frontier	124	128	163	68	137	123	69	101.5%	13	10.5%
01 Lincoln Trail	97	112	135	79	131	115	52	65.8%	34	35.1%
02 Olney Central	44	70	65	84	97	82	13	15.5%	53	120.5%
03 Wabash Valley	46	36	58	40	71	56	31	77.5%	25	54.3%
513 Illinois Valley	92	108	90	94	96	93	2	2.1%	4	4.3%
530 John A. Logan	80	106	95	111	113	106	2	1.8%	33	41.3%
539 John Wood	60	60	149	51	69	90	18	35.3%	9	15.0%
525 Joliet Junior	226	226	245	261	216	241	-45	-17.2%	-10	-4.4%
520 Kankakee	28	27	35	32	33	33	1	3.1%	5	17.9%
501 Kaskaskia	161	154	120	136	129	128	-7	-5.1%	-32	-19.9%
523 Kishwaukee	34	47	65	60	65	63	5	8.3%	31	91.2%
517 Lake Land	180	191	182	186	187	185	1	0.5%	7	3.9%
536 Lewis and Clark	303	314	255	237	238	243	1	0.4%	-65	-21.5%
526 Lincoln Land	146	153	150	150	158	153	8	5.3%	12	8.2%
528 McHenry County	69	84	180	293	422	298	129	44.0%	353	511.6%
524 Moraine Valley	24	34	72	70	85	76	15	21.4%	61	254.2%
527 Morton	60	63	56	53	58	56	5	9.4%	-2	-3.3%
535 Oakton	53	59	64	65	79	69	14	21.5%	26	49.1%
505 Parkland	251	223	295	221	228	248	7	3.2%	-23	-9.2%
515 Prairie State	0	1	3	0	0	1	0	--	0	--
521 Rend Lake	150	114	111	111	112	111	1	0.9%	-38	-25.3%
537 Richland	167	194	209	233	230	224	-3	-1.3%	63	37.7%
511 Rock Valley	661	651	749	653	526	643	-127	-19.4%	-135	-20.4%
506 Sauk Valley	212	213	221	186	203	203	17	9.1%	-9	-4.2%
531 Shawnee	46	43	54	55	115	75	60	109.1%	69	150.0%
510 South Suburban	5	6	2	9	14	8	5	55.6%	9	180.0%
533 Southeastern Illinois	154	158	132	142	136	137	-6	-4.2%	-18	-11.7%
522 Southwestern Illinois	919	834	827	724	773	775	49	6.8%	-146	-15.9%
534 Spoon River	130	137	124	135	158	139	23	17.0%	28	21.5%
504 Triton	117	116	141	173	49	121	-124	-71.7%	-68	-58.1%
516 Waubensee	359	414	432	462	528	474	66	14.3%	169	47.1%
TOTALS	7,433	7,758	8,474	8,366	9,216	8,685	850	10.2%	1,783	24.0%
Pure										
Minimum	0	1	2	0	0	1	-127	-71.7%	-146	-58.1%
Maximum	919	834	827	724	773	775	129	109.1%	353	511.6%
Median	101	110	122	122	135	123	14	10.2%	26	35.1%
Standard Deviation	163	158	167	159	162	161	44	32.8%	89	93.7%
Average	155	162	177	174	192	181	18	20.5%	37	56.8%

SOURCE OF DATA: ICCB Centralized Data System--Annual Course (AC) Data



Illinois Community College Board  
Table B-6  
DUAL CREDIT COURSE ENROLLMENT BY COLLEGE  
IN TRANSFER EDUCATION  
FOR FISCAL YEARS 2019-2023

Dist. No.	District/College	FY 2021-2023 3-Year Average					FY 2022-2023 1-Year Difference		FY 2019-2023 5-Year Difference		
		2019	2020	2021	2022	2023	Number	Percent	Number	Percent	
503	Black Hawk	2,466	2,398	2,593	2,391	2,512	2,499	121	5.1%	46	1.9%
518	Carl Sandburg	1,578	1,854	1,842	1,889	1,800	1,844	-89	-4.7%	222	14.1%
508	City Colleges of Chicago	(5,822)	(6,288)	(5,017)	(6,787)	(9,085)	(6,963)	(2,298)	(33.9%)	(3,263)	(56.0%)
02	Harold Washington	832	933	722	1,344	1,669	1,245	325	24.2%	837	100.6%
04	Harry S Truman	313	381	420	454	745	540	291	64.1%	432	138.0%
01	Kennedy-King	541	394	251	300	699	417	399	133.0%	158	29.2%
03	Malcolm X	625	466	385	503	925	604	422	83.9%	300	48.0%
05	Olive-Harvey	812	706	490	613	842	648	229	37.4%	30	3.7%
06	Richard J. Daley	1,411	1,648	1,201	1,758	2,239	1,733	481	27.4%	828	58.7%
07	Wilbur Wright	1,288	1,760	1,548	1,815	1,966	1,776	151	8.3%	678	52.6%
502	College of DuPage	2,118	1,918	2,211	1,845	3,539	2,532	1,694	91.8%	1,421	67.1%
532	College of Lake County	913	1,044	1,307	1,429	2,250	1,662	821	57.5%	1,337	146.4%
507	Danville Area	1,542	1,645	1,333	1,355	1,557	1,415	202	14.9%	15	1.0%
509	Elgin	1,568	2,235	2,978	3,541	4,394	3,638	853	24.1%	2,826	180.2%
512	Harper	2,599	3,304	4,189	4,211	4,839	4,413	628	14.9%	2,240	86.2%
540	Heartland	2,259	2,291	3,437	3,131	3,568	3,379	437	14.0%	1,309	57.9%
519	Highland	415	487	439	492	427	453	-65	-13.2%	12	2.9%
514	Illinois Central	4,072	4,351	4,131	4,738	4,581	4,483	-157	-3.3%	509	12.5%
529	Illinois Eastern	(2,947)	(2,966)	(3,223)	(2,350)	(2,675)	(2,749)	(325)	(13.8%)	(-272)	(-9.2%)
04	Frontier	1,453	1,498	1,626	724	958	1,103	234	32.3%	-495	-34.1%
01	Lincoln Trail	628	643	826	513	691	677	178	34.7%	63	10.0%
02	Olney Central	500	522	494	861	767	707	-94	-10.9%	267	53.4%
03	Wabash Valley	366	303	277	252	259	263	7	2.8%	-107	-29.2%
513	Illinois Valley	1,347	1,141	1,061	1,283	1,282	1,209	-1	-0.1%	-65	-4.8%
530	John A. Logan	1,508	1,877	1,888	2,074	2,015	1,992	-59	-2.8%	507	33.6%
539	John Wood	507	404	569	394	620	528	226	57.4%	113	22.3%
525	Joliet Junior	4,392	4,664	4,546	4,644	4,420	4,537	-224	-4.8%	28	0.6%
520	Kankakee	450	457	548	518	515	527	-3	-0.6%	65	14.4%
501	Kaskaskia	2,400	2,660	2,608	3,005	3,067	2,893	62	2.1%	667	27.8%
523	Kishwaukee	398	752	968	912	995	958	83	9.1%	597	150.0%
517	Lake Land	2,535	2,559	2,625	2,450	2,407	2,494	-43	-1.8%	-128	-5.0%
536	Lewis and Clark	5,641	5,509	4,186	3,646	3,419	3,750	-227	-6.2%	-2,222	-39.4%
526	Lincoln Land	2,457	2,472	2,283	2,044	2,432	2,253	388	19.0%	-25	-1.0%
528	McHenry County	1,693	2,084	4,392	7,163	10,043	7,199	2,880	40.2%	8,350	493.2%
524	Moraine Valley	498	416	854	975	1,313	1,047	338	34.7%	815	163.7%
527	Morton	824	944	688	919	1,066	891	147	16.0%	242	29.4%
535	Oakton	887	862	963	1,002	1,399	1,121	397	39.6%	512	57.7%
505	Parkland	2,104	1,773	1,721	1,568	1,848	1,712	280	17.9%	-256	-12.2%
515	Prairie State	0	1	30	0	0	10	0	--	0	--
521	Rend Lake	2,557	2,015	2,085	1,951	1,793	1,943	-158	-8.1%	-764	-29.9%
537	Richland	1,252	1,338	1,177	1,530	1,616	1,441	86	5.6%	364	29.1%
511	Rock Valley	3,059	2,772	3,343	3,048	2,159	2,850	-889	-29.2%	-900	-29.4%
506	Sauk Valley	905	885	921	868	856	882	-12	-1.4%	-49	-5.4%
531	Shawnee	764	750	904	728	1,218	950	490	67.3%	454	59.4%
510	South Suburban	55	63	30	155	188	124	33	21.3%	133	241.8%
533	Southeastern Illinois	1,043	1,210	1,046	1,027	1,257	1,110	230	22.4%	214	20.5%
522	Southwestern Illinois	5,248	4,638	3,803	4,356	5,033	4,397	677	15.5%	-215	-4.1%
534	Spoon River	675	824	727	812	1,040	860	228	28.1%	365	54.1%
504	Triton	969	900	1,951	2,375	902	1,743	-1,473	-62.0%	-67	-6.9%
516	Waubonsee	<u>3,500</u>	<u>4,480</u>	<u>5,103</u>	<u>5,760</u>	<u>6,269</u>	<u>5,711</u>	<u>509</u>	<u>8.8%</u>	<u>2,769</u>	<u>79.1%</u>
TOTALS		75,967	79,231	83,720	89,366	100,399	91,162	11,033	12.3%	24,432	32.2%
Pure											
Mininum		0	1	30	0	0	10	-1,473	-62.0%	-2,222	-39.4%
Maximum		5,641	5,509	5,103	7,163	10,043	7,199	2,880	133.0%	8,350	493.2%
Median		1,270	1,274	1,254	1,392	1,587	1,428	190	14.9%	218	27.8%
Standard Deviation		1,291	1,317	1,360	1,566	1,838	1,565	584	32.3%	1,424	89.9%
Average		1,583	1,651	1,744	1,862	2,092	1,899	230	19.7%	509	49.8%

SOURCE OF DATA: ICCB Centralized Data System--Annual Course (AC) Data



Illinois Community College Board  
Table B-7  
AVERAGE DUAL CREDIT CLASS SIZE BY COLLEGE  
IN TRANSFER EDUCATION  
FOR FISCAL YEARS 2019-2023

Dist.					FY 2021-2023	FY 2022-2023			FY 2019-2023	
No. District/College	2019	2020	2021	2022	3-Year Average	1-Year Difference			5-Year Difference	
					Number	Number	Percent		Number	Percent
503 Black Hawk	8.8	9.7	7.7	8.3	8.9	8.3	0.6	7.3%	0.2	1.9%
518 Carl Sandburg	5.9	5.4	5.2	5.0	4.9	5.0	-0.1	-2.1%	-1.1	-17.9%
508 City Colleges of Chicago	(11.7)	(12.1)	(9.5)	(10.1)	(10.2)	(9.9)	(0.0)	(0.2%)	(-1.5)	(-13.1%)
02 Harold Washington	8.8	10.0	8.2	9.7	9.1	9.0	-0.6	-6.2%	0.3	3.6%
04 Harry S Truman	9.2	7.1	7.5	6.5	7.0	7.0	0.5	8.4%	-2.2	-23.7%
01 Kennedy-King	10.4	7.4	4.9	4.1	6.5	5.2	2.4	59.0%	-3.9	-37.2%
03 Malcolm X	8.8	6.9	4.7	6.3	7.0	6.0	0.7	10.6%	-1.8	-21.0%
05 Olive-Harvey	11.3	13.8	9.6	9.6	9.5	9.5	-0.1	-1.2%	-1.8	-16.1%
06 Richard J. Daley	15.0	15.7	11.9	14.7	15.3	14.0	0.7	4.7%	0.3	2.2%
07 Wilbur Wright	16.1	18.7	16.0	14.8	15.2	15.3	0.5	3.3%	-0.9	-5.3%
502 College of DuPage	20.4	20.4	20.3	17.6	17.3	18.4	-0.2	-1.3%	-3.0	-14.8%
532 College of Lake County	15.7	14.3	13.5	13.9	16.8	14.7	2.9	21.0%	1.0	6.7%
507 Danville Area	4.4	4.6	4.1	4.6	4.8	4.5	0.2	4.3%	0.4	8.1%
509 Elgin	4.9	5.6	6.2	6.0	6.7	6.3	0.7	11.9%	1.7	34.6%
512 Harper	18.2	18.4	18.0	19.3	20.1	19.1	0.8	3.9%	1.9	10.5%
540 Heartland	10.9	9.4	11.8	11.4	9.4	10.9	-2.0	-17.4%	-1.4	-13.1%
519 Highland	13.0	13.9	11.9	12.6	10.9	11.8	-1.7	-13.2%	-2.0	-15.6%
514 Illinois Central	22.6	22.2	19.7	20.9	19.6	20.0	-1.3	-6.2%	-3.0	-13.5%
529 Illinois Eastern	(9.5)	(8.6)	(7.7)	(8.7)	(6.1)	(7.5)	(-2.5)	(-29.2%)	(-3.3)	(-35.3%)
04 Frontier	11.7	11.7	10.0	10.6	7.0	9.2	-3.7	-34.3%	-4.7	-40.3%
01 Lincoln Trail	6.5	5.7	6.1	6.5	5.3	6.0	-1.2	-18.8%	-1.2	-18.5%
02 Olney Central	11.4	7.5	7.6	10.3	7.9	8.6	-2.3	-22.9%	-3.5	-30.4%
03 Wabash Valley	8.0	8.4	4.8	6.3	3.6	4.9	-2.7	-42.1%	-4.3	-54.2%
513 Illinois Valley	14.6	10.6	11.8	13.6	13.4	12.9	-0.3	-2.2%	-1.3	-8.8%
530 John A. Logan	18.9	17.7	19.9	18.7	17.8	18.8	-0.9	-4.6%	-1.0	-5.4%
539 John Wood	8.5	6.7	3.8	7.7	9.0	6.8	1.3	16.3%	0.5	6.3%
525 Joliet Junior	19.4	20.6	18.6	17.8	20.5	18.9	2.7	15.0%	1.0	5.3%
520 Kankakee	16.1	16.9	15.7	16.2	15.6	15.8	-0.6	-3.6%	-0.5	-2.9%
501 Kaskaskia	14.9	17.3	21.7	22.1	23.8	22.5	1.7	7.6%	8.9	59.5%
523 Kishwaukee	11.7	16.0	14.9	15.2	15.3	15.1	0.1	0.7%	3.6	30.8%
517 Lake Land	14.1	13.4	14.4	13.2	12.9	13.5	-0.3	-2.3%	-1.2	-8.6%
536 Lewis and Clark	18.6	17.5	16.4	15.4	14.4	15.4	-1.0	-6.6%	-4.3	-22.8%
526 Lincoln Land	16.8	16.2	15.2	13.6	15.4	14.7	1.8	13.0%	-1.4	-8.5%
528 McHenry County	24.5	24.8	24.4	24.4	23.8	24.2	-0.6	-2.7%	-0.7	-3.0%
524 Moraine Valley	20.8	12.2	11.9	13.9	15.4	13.7	1.5	10.9%	-5.3	-25.6%
527 Morton	13.7	15.0	12.3	17.3	18.4	16.0	1.0	6.0%	4.6	33.8%
535 Oakton	16.7	14.6	15.0	15.4	17.7	16.1	2.3	14.9%	1.0	5.8%
505 Parkland	8.4	8.0	5.8	7.1	8.1	7.0	1.0	14.2%	-0.3	-3.3%
515 Prairie State	--	1.0	10.0	--	--	10.0	--	--	--	--
521 Rend Lake	17.0	17.7	18.8	17.6	16.0	17.5	-1.6	-8.9%	-1.0	-6.1%
537 Richland	7.5	6.9	5.6	6.6	7.0	6.4	0.5	7.0%	-0.5	-6.3%
511 Rock Valley	4.6	4.3	4.5	4.7	4.1	4.4	-0.6	-12.1%	-0.5	-11.3%
506 Sauk Valley	4.3	4.2	4.2	4.7	4.2	4.4	-0.4	-9.6%	-0.1	-1.2%
531 Shawnee	16.6	17.4	16.7	13.2	10.6	13.5	-2.6	-20.0%	-6.0	-36.2%
510 South Suburban	11.0	10.5	15.0	17.2	13.4	15.2	-3.8	-22.0%	2.4	22.1%
533 Southeastern Illinois	6.8	7.7	7.9	7.2	9.2	8.1	2.0	27.8%	2.5	36.5%
522 Southwestern Illinois	5.7	5.6	4.6	6.0	6.5	5.7	0.5	8.2%	0.8	14.0%
534 Spoon River	5.2	6.0	5.9	6.0	6.6	6.2	0.6	9.4%	1.4	26.8%
504 Triton	8.3	7.8	13.8	13.7	18.4	15.3	4.7	34.1%	10.1	122.3%
516 Waubensee	9.7	10.8	11.8	12.5	11.9	12.1	-0.6	-4.8%	2.1	21.8%
TOTALS/AVERAGES	10.2	10.2	9.9	10.7	10.9	10.5	0.2	2.0%	0.7	6.6%
Pure										
Minimum	4.3	1.0	3.8	4.1	3.6	4.4	-3.8	-42.1%	-6.0	-54.2%
Maximum	24.5	24.8	24.4	24.4	23.8	24.2	4.7	59.0%	10.1	122.3%
Median	11.4	10.7	11.8	12.6	10.9	11.9	0.1	0.7%	-0.5	-5.3%
Standard Deviation	5.3	5.6	5.5	5.3	5.5	5.3	1.7	16.9%	3.1	28.7%
Average	12.3	11.8	11.5	11.9	12.0	11.8	0.1	1.2%	-0.3	-0.4%

SOURCE OF DATA: ICCB Centralized Data System--Annual Course (AC) Data



Illinois Community College Board  
Table B-8  
TOP FIVE DUAL CREDIT COURSE ENROLLMENTS BY COLLEGE  
IN TRANSFER EDUCATION  
FISCAL YEAR 2023

Dist. No. District/College	23.1301 Writing, General	27.0101 Mathematics, General	16.0905 Spanish Language and Literature	23.1304 Rhetoric and Composition	54.0102 American History (United States)	Total
503 Black Hawk	854	215	107	283	253	1,712
518 Carl Sandburg	388	32	9	143	89	661
508 City Colleges of Chicago	(3,115)	(1,271)	(773)	(0)	(189)	(5,348)
02 Harold Washington	660	97	240	0	37	1,034
04 Harry S Truman	188	210	22	0	25	445
01 Kennedy-King	176	32	1	0	20	229
03 Malcolm X	99	92	77	0	0	268
05 Olive-Harvey	197	37	222	0	36	492
06 Richard J. Daley	1,084	264	88	0	9	1,445
07 Wilbur Wright	711	539	123	0	62	1,435
502 College of DuPage	728	0	403	0	0	1,131
532 College of Lake County	825	24	81	36	110	1,076
507 Danville Area	451	32	6	45	58	592
509 Elgin	1,374	328	243	146	244	2,335
512 Harper	507	780	876	855	0	3,018
540 Heartland	973	64	31	0	135	1,203
519 Highland	64	57	0	0	10	131
514 Illinois Central	1,613	64	0	359	200	2,236
529 Illinois Eastern	(583)	(325)	(148)	(198)	(217)	(1,471)
04 Frontier	228	170	9	38	108	553
01 Lincoln Trail	112	97	131	46	15	401
02 Olney Central	176	23	1	91	94	385
03 Wabash Valley	67	35	7	23	0	132
513 Illinois Valley	385	24	0	200	42	651
530 John A. Logan	572	61	149	116	0	898
539 John Wood	202	79	35	65	0	381
525 Joliet Junior	2,693	0	0	116	416	3,225
520 Kankakee	59	37	0	34	57	187
501 Kaskaskia	688	283	254	337	253	1,815
523 Kishwaukee	244	77	10	135	135	601
517 Lake Land	964	429	18	179	0	1,590
536 Lewis and Clark	993	363	399	81	383	2,219
526 Lincoln Land	447	298	183	232	440	1,600
528 McHenry County	1,326	88	2,459	814	1,350	6,037
524 Moraine Valley	306	280	0	0	0	586
527 Morton	0	394	0	0	0	394
535 Oakton	500	201	0	21	0	722
505 Parkland	1,029	30	4	18	74	1,155
515 Prairie State	0	0	0	0	0	0
521 Rend Lake	404	504	8	52	124	1,092
537 Richland	496	24	0	63	16	599
511 Rock Valley	321	213	16	119	201	870
506 Sauk Valley	307	82	3	34	12	438
531 Shawnee	293	137	21	24	190	665
510 South Suburban	0	0	0	0	0	0
533 Southeastern Illinois	174	85	3	51	27	340
522 Southwestern Illinois	850	284	116	583	148	1,981
534 Spoon River	301	93	0	156	16	566
504 Triton	22	95	0	0	1	118
516 Waubensee	<u>1,252</u>	<u>1,353</u>	<u>393</u>	<u>279</u>	<u>164</u>	<u>3,441</u>
TOTALS	26,303	8,706	6,748	5,774	5,554	53,085
Grand Total	163,283	163,283	163,283	163,283	163,283	163,283
Percent Top Five of Grand Total	16.1%	5.3%	4.1%	3.5%	3.4%	32.5%

SOURCE OF DATA: ICCB Centralized Data System--Annual Course (AC) Data





Illinois Community College Board  
Table B-9  
DUAL CREDIT COURSE COUNT BY COLLEGE  
IN CAREER AND TECHNICAL EDUCATION  
FISCAL YEARS 2019-2023

Dist.		FY 2021-2023					FY 2022-2023		FY 2019-2023		
No.	District/College	2019	2020	2021	2022	2023	3-Year Average Number	1-Year Difference Number	Percent	5-Year Difference Number	Percent
503	Black Hawk	120	124	129	136	129	131	-7	-5.1%	9	7.5%
518	Carl Sandburg	48	69	61	56	49	55	-7	-12.5%	1	2.1%
508	City Colleges of Chicago	(108)	(137)	(200)	(234)	(232)	(222)	(-2)	(-0.9%)	(124)	(114.8%)
02	Harold Washington	29	32	49	53	43	48	-10	-18.9%	14	48.3%
04	Harry S Truman	7	7	18	11	14	14	3	27.3%	7	100.0%
01	Kennedy-King	11	17	24	44	52	40	8	18.2%	41	372.7%
03	Malcolm X	9	24	34	38	39	37	1	2.6%	30	333.3%
05	Olive-Harvey	16	18	29	32	26	29	-6	-18.8%	10	62.5%
06	Richard J. Daley	28	29	33	35	39	36	4	11.4%	11	39.3%
07	Wilbur Wright	8	10	13	21	19	18	-2	-9.5%	11	137.5%
502	College of DuPage	358	353	399	436	467	434	31	7.1%	109	30.4%
532	College of Lake County	106	151	138	178	202	173	24	13.5%	96	90.6%
507	Danville Area	142	150	156	169	174	166	5	3.0%	32	22.5%
509	Elgin	65	48	60	64	84	69	20	31.3%	19	29.2%
512	Harper	229	228	224	250	252	242	2	0.8%	23	10.0%
540	Heartland	99	96	111	105	114	110	9	8.6%	15	15.2%
519	Highland	85	102	108	133	108	116	-25	-18.8%	23	27.1%
514	Illinois Central	91	92	97	113	99	103	-14	-12.4%	8	8.8%
529	Illinois Eastern	(210)	(227)	(222)	(209)	(272)	(234)	(63)	(30.1%)	(62)	(29.5%)
04	Frontier	88	100	107	74	93	91	19	25.7%	5	5.7%
01	Lincoln Trail	28	40	25	20	49	31	29	145.0%	21	75.0%
02	Olney Central	32	38	32	52	59	48	7	13.5%	27	84.4%
03	Wabash Valley	62	49	58	63	71	64	8	12.7%	9	14.5%
513	Illinois Valley	56	58	51	39	40	43	1	2.6%	-16	-28.6%
530	John A. Logan	44	43	57	39	40	45	1	2.6%	-4	-9.1%
539	John Wood	19	18	45	21	29	32	8	38.1%	10	52.6%
525	Joliet Junior	210	207	203	249	244	232	-5	-2.0%	34	16.2%
520	Kankakee	20	22	22	19	21	21	2	10.5%	1	5.0%
501	Kaskaskia	196	194	156	173	195	175	22	12.7%	-1	-0.5%
523	Kishwaukee	71	66	58	57	53	56	-4	-7.0%	-18	-25.4%
517	Lake Land	204	153	119	143	139	134	-4	-2.8%	-65	-31.9%
536	Lewis and Clark	230	226	162	71	94	109	23	32.4%	-136	-59.1%
526	Lincoln Land	56	45	78	86	93	86	7	8.1%	37	66.1%
528	McHenry County	83	102	113	123	121	119	-2	-1.6%	38	45.8%
524	Moraine Valley	234	297	281	328	329	313	1	0.3%	95	40.6%
527	Morton	24	28	15	33	67	38	34	103.0%	43	179.2%
535	Oakton	76	166	155	187	195	179	8	4.3%	119	156.6%
505	Parkland	65	63	86	75	64	75	-11	-14.7%	-1	-1.5%
515	Prairie State	52	81	56	51	53	53	2	3.9%	1	1.9%
521	Rend Lake	84	66	39	62	45	49	-17	-27.4%	-39	-46.4%
537	Richland	95	86	68	68	76	71	8	11.8%	-19	-20.0%
511	Rock Valley	41	33	82	96	129	102	33	34.4%	88	214.6%
506	Sauk Valley	128	127	114	102	112	109	10	9.8%	-16	-12.5%
531	Shawnee	21	26	23	16	29	23	13	81.3%	8	38.1%
510	South Suburban	211	206	201	291	305	266	14	4.8%	94	44.5%
533	Southeastern Illinois	79	91	109	73	82	88	9	12.3%	3	3.8%
522	Southwestern Illinois	241	286	301	366	384	350	18	4.9%	143	59.3%
534	Spoon River	16	20	31	27	27	28	0	0.0%	11	68.8%
504	Triton	141	223	218	205	147	190	-58	-28.3%	6	4.3%
516	Waubensee	114	101	92	94	127	104	33	35.1%	13	11.4%
TOTALS		4,472	4,811	4,840	5,177	5,422	5,146	245	4.7%	950	21.2%
Pure											
Mininum		7	7	13	11	14	14	-58	-28.3%	-136	-59.1%
Maximum		358	353	399	436	467	434	34	145.0%	143	372.7%
Median		74	75	80	72	83	80	5	4.9%	11	24.8%
Standard Deviation		79	84	82	96	99	92	16	30.4%	46	84.6%
Average		93	100	101	108	113	107	5	11.5%	20	47.7%

SOURCE OF DATA: ICCB Centralized Data System--Annual Course (AC) Data



Illinois Community College Board  
Table B-10  
DUAL CREDIT COURSE ENROLLMENT BY COLLEGE  
IN CAREER AND TECHNICAL EDUCATION  
FISCAL YEARS 2019-2023

Dist. No.	District/College	FY 2021-2023 3-Year Average					FY 2022-2023 1-Year Difference		FY 2019-2023 5-Year Difference		
		2019	2020	2021	2022	2023	Number	Percent	Number	Percent	
503	Black Hawk	916	847	672	726	955	784	229	31.5%	39	4.3%
518	Carl Sandburg	300	353	402	418	394	405	-24	-5.7%	94	31.3%
508	City Colleges of Chicago	(1,313)	(1,341)	(1,538)	(1,957)	(2,098)	(1,864)	(141)	(7.2%)	(785)	(59.8%)
02	Harold Washington	494	522	638	627	607	624	-20	-3.2%	113	22.9%
04	Harry S Truman	57	23	92	29	117	79	88	303.4%	60	105.3%
01	Kennedy-King	195	122	89	260	387	245	127	48.8%	192	98.5%
03	Malcolm X	93	187	144	219	197	187	-22	-10.0%	104	111.8%
05	Olive-Harvey	82	136	146	215	208	190	-7	-3.3%	126	153.7%
06	Richard J. Daley	314	286	315	412	358	362	-54	-13.1%	44	14.0%
07	Wilbur Wright	78	65	114	195	224	178	29	14.9%	146	187.2%
502	College of DuPage	5,913	5,920	4,771	6,220	7,453	6,148	1,233	19.8%	1,540	26.0%
532	College of Lake County	994	1,574	868	1,659	2,237	1,588	578	34.8%	1,243	125.1%
507	Danville Area	1,193	1,132	794	908	1,072	925	164	18.1%	-121	-10.1%
509	Elgin	262	274	239	214	338	264	124	57.9%	76	29.0%
512	Harper	2,833	3,241	3,374	3,518	3,543	3,478	25	0.7%	710	25.1%
540	Heartland	754	753	618	729	735	694	6	0.8%	-19	-2.5%
519	Highland	938	1,091	822	1,331	1,087	1,080	-244	-18.3%	149	15.9%
514	Illinois Central	1,228	1,236	1,283	1,392	1,206	1,294	-186	-13.4%	-22	-1.8%
529	Illinois Eastern	(1,360)	(1,367)	(1,306)	(1,435)	(1,485)	(1,409)	(50)	(3.5%)	(125)	(9.2%)
04	Frontier	601	605	652	435	430	506	-5	-1.1%	-171	-28.5%
01	Lincoln Trail	127	137	134	173	257	188	84	48.6%	130	102.4%
02	Olney Central	215	309	203	330	278	270	-52	-15.8%	63	29.3%
03	Wabash Valley	417	316	317	497	520	445	23	4.6%	103	24.7%
513	Illinois Valley	399	433	270	230	308	269	78	33.9%	-91	-22.8%
530	John A. Logan	580	580	679	457	427	521	-30	-6.6%	-153	-26.4%
539	John Wood	82	88	145	84	114	114	30	35.7%	32	39.0%
525	Joliet Junior	2,841	2,974	2,517	3,541	3,669	3,242	128	3.6%	828	29.1%
520	Kankakee	355	408	396	418	495	436	77	18.4%	140	39.4%
501	Kaskaskia	2,495	2,428	2,345	2,939	3,392	2,892	453	15.4%	897	36.0%
523	Kishwaukee	799	679	543	559	507	536	-52	-9.3%	-292	-36.5%
517	Lake Land	1,291	1,241	1,068	1,298	1,294	1,220	-4	-0.3%	3	0.2%
536	Lewis and Clark	3,201	3,147	1,723	675	739	1,046	64	9.5%	-2,462	-76.9%
526	Lincoln Land	560	472	572	744	893	736	149	20.0%	333	59.5%
528	McHenry County	1,115	1,529	1,684	1,906	1,952	1,847	46	2.4%	837	75.1%
524	Moraine Valley	4,112	4,413	3,424	4,643	4,467	4,178	-176	-3.8%	355	8.6%
527	Morton	326	316	98	340	507	315	167	49.1%	181	55.5%
535	Oakton	1,427	2,397	2,197	2,682	3,020	2,633	338	12.6%	1,593	111.6%
505	Parkland	472	382	694	735	759	729	24	3.3%	287	60.8%
515	Prairie State	763	747	497	717	635	616	-82	-11.4%	-128	-16.8%
521	Rend Lake	662	603	357	491	436	428	-55	-11.2%	-226	-34.1%
537	Richland	753	829	668	630	737	678	107	17.0%	-16	-2.1%
511	Rock Valley	52	59	317	466	347	377	-119	-25.5%	295	567.3%
506	Sauk Valley	737	926	758	698	752	736	54	7.7%	15	2.0%
531	Shawnee	224	257	232	206	249	229	43	20.9%	25	11.2%
510	South Suburban	2,451	3,314	2,628	4,053	4,164	3,615	111	2.7%	1,713	69.9%
533	Southeastern Illinois	401	468	505	435	695	545	260	59.8%	294	73.3%
522	Southwestern Illinois	2,461	3,273	3,006	4,509	4,976	4,164	467	10.4%	2,515	102.2%
534	Spoon River	62	85	174	147	171	164	24	16.3%	109	175.8%
504	Triton	1,158	2,184	2,372	2,059	3,382	2,604	1,323	64.3%	2,224	192.1%
516	Waubonsee	<u>864</u>	<u>802</u>	<u>667</u>	<u>856</u>	<u>1,194</u>	<u>906</u>	<u>338</u>	<u>39.5%</u>	<u>330</u>	<u>38.2%</u>
TOTALS		48,647	54,163	47,223	57,025	62,884	55,711	5,859	10.3%	14,237	29.3%
Pure											
Mininum		52	23	89	29	114	79	-244	-25.5%	-2,462	-76.9%
Maximum		5,913	5,920	4,771	6,220	7,453	6,148	1,323	303.4%	2,515	567.3%
Median		632	604	628	629	665	620	45	8.6%	111	29.2%
Standard Deviation		1,171	1,280	1,067	1,405	1,564	1,348	289	47.0%	748	96.7%
Average		1,013	1,128	984	1,188	1,310	1,161	122	18.2%	297	54.1%

SOURCE OF DATA: ICCB Centralized Data System--Annual Course (AC) Data



Illinois Community College Board  
Table B-11  
AVERAGE DUAL CREDIT CLASS SIZE BY COLLEGE  
IN CAREER AND TECHNICAL EDUCATION  
FISCAL YEARS 2019-2023

Dist.					FY 2021-2023 3-Year Average		FY 2022-2023 1-Year Difference		FY 2019-2023 5-Year Difference	
No. District/College	2019	2020	2021	2022	2023	Number	Number	Percent	Number	Percent
503 Black Hawk	7.6	6.8	5.2	5.3	7.4	6.0	2.1	38.7%	-0.2	-3.0%
518 Carl Sandburg	6.3	5.1	6.6	7.5	8.0	7.4	0.6	7.7%	1.8	28.7%
508 City Colleges of Chicago	(12.2)	(9.8)	(7.7)	(8.4)	(9.0)	(8.4)	(0.7)	(8.1%)	(-3.1)	(-25.6%)
02 Harold Washington	17.0	16.3	13.0	11.8	14.1	13.0	2.3	19.3%	-2.9	-17.1%
04 Harry S Truman	8.1	3.3	5.1	2.6	8.4	5.4	5.7	217.0%	0.2	2.6%
01 Kennedy-King	17.7	7.2	3.7	5.9	7.4	5.7	1.5	25.9%	-10.3	-58.0%
03 Malcolm X	10.3	7.8	4.2	5.8	5.1	5.0	-0.7	-12.4%	-5.3	-51.1%
05 Olive-Harvey	5.1	7.6	5.0	6.7	8.0	6.6	1.3	19.1%	2.9	56.1%
06 Richard J. Daley	11.2	9.9	9.5	11.8	9.2	10.2	-2.6	-22.0%	-2.0	-18.1%
07 Wilbur Wright	9.8	6.5	8.8	9.3	11.8	9.9	2.5	27.0%	2.0	20.9%
502 College of DuPage	16.5	16.8	12.0	14.3	16.0	14.1	1.7	11.9%	-0.6	-3.4%
532 College of Lake County	9.4	10.4	6.3	9.3	11.1	8.9	1.8	18.8%	1.7	18.1%
507 Danville Area	8.4	7.5	5.1	5.4	6.2	5.5	0.8	14.7%	-2.2	-26.7%
509 Elgin	4.0	5.7	4.0	3.3	4.0	3.8	0.7	20.3%	0.0	-0.2%
512 Harper	12.4	14.2	15.1	14.1	14.1	14.4	0.0	-0.1%	1.7	13.6%
540 Heartland	7.6	7.8	5.6	6.9	6.4	6.3	-0.5	-7.1%	-1.2	-15.3%
519 Highland	11.0	10.7	7.6	10.0	10.1	9.2	0.1	0.6%	-1.0	-8.8%
514 Illinois Central	13.5	13.4	13.2	12.3	12.2	12.6	-0.1	-1.1%	-1.3	-9.7%
529 Illinois Eastern	(6.5)	(6.0)	(5.9)	(6.9)	(5.5)	(6.1)	(-1.4)	(-20.5%)	(-1.0)	(-15.7%)
04 Frontier	6.8	6.1	6.1	5.9	4.6	5.5	-1.3	-21.3%	-2.2	-32.3%
01 Lincoln Trail	4.5	3.4	5.4	8.7	5.2	6.4	-3.4	-39.4%	0.7	15.6%
02 Olney Central	6.7	8.1	6.3	6.3	4.7	5.8	-1.6	-25.8%	-2.0	-29.9%
03 Wabash Valley	6.7	6.4	5.5	7.9	7.3	6.9	-0.6	-7.2%	0.6	8.9%
513 Illinois Valley	7.1	7.5	5.3	5.9	7.7	6.3	1.8	30.6%	0.6	8.1%
530 John A. Logan	13.2	13.5	11.9	11.7	10.7	11.4	-1.0	-8.9%	-2.5	-19.0%
539 John Wood	4.3	4.9	3.2	4.0	3.9	3.7	-0.1	-1.7%	-0.4	-8.9%
525 Joliet Junior	13.5	14.4	12.4	14.2	15.0	13.9	0.8	5.7%	1.5	11.1%
520 Kankakee	17.8	18.5	18.0	22.0	23.6	21.2	1.6	7.1%	5.8	32.8%
501 Kaskaskia	12.7	12.5	15.0	17.0	17.4	16.5	0.4	2.4%	4.7	36.6%
523 Kishwaukee	11.3	10.3	9.4	9.8	9.6	9.6	-0.2	-2.5%	-1.7	-15.0%
517 Lake Land	6.3	8.1	9.0	9.1	9.3	9.1	0.2	2.6%	3.0	47.1%
536 Lewis and Clark	13.9	13.9	10.6	9.5	7.9	9.3	-1.6	-17.3%	-6.1	-43.5%
526 Lincoln Land	10.0	10.5	7.3	8.7	9.6	8.5	1.0	11.0%	-0.4	-4.0%
528 McHenry County	13.4	15.0	14.9	15.5	16.1	15.5	0.6	4.1%	2.7	20.1%
524 Moraine Valley	17.6	14.9	12.2	14.2	13.6	13.3	-0.6	-4.1%	-4.0	-22.7%
527 Morton	13.6	11.3	6.5	10.3	7.6	8.1	-2.7	-26.6%	-6.0	-44.3%
535 Oakton	18.8	14.4	14.2	14.3	15.5	14.7	1.1	8.0%	-3.3	-17.5%
505 Parkland	7.3	6.1	8.1	9.8	11.9	9.9	2.1	21.0%	4.6	63.3%
515 Prairie State	14.7	9.2	8.9	14.1	12.0	11.6	-2.1	-14.8%	-2.7	-18.3%
521 Rend Lake	7.9	9.1	9.2	7.9	9.7	8.9	1.8	22.3%	1.8	22.9%
537 Richland	7.9	9.6	9.8	9.3	9.7	9.6	0.4	4.7%	1.8	22.3%
511 Rock Valley	1.3	1.8	3.9	4.9	2.7	3.8	-2.2	-44.6%	1.4	112.1%
506 Sauk Valley	5.8	7.3	6.6	6.8	6.7	6.7	-0.1	-1.9%	1.0	16.6%
531 Shawnee	10.7	9.9	10.1	12.9	8.6	10.5	-4.3	-33.3%	-2.1	-19.5%
510 South Suburban	11.6	16.1	13.1	13.9	13.7	13.6	-0.3	-2.0%	2.0	17.5%
533 Southeastern Illinois	5.1	5.1	4.6	6.0	8.5	6.4	2.5	42.2%	3.4	67.0%
522 Southwestern Illinois	10.2	11.4	10.0	12.3	13.0	11.8	0.6	5.2%	2.7	26.9%
534 Spoon River	3.9	4.3	5.6	5.4	6.3	5.8	0.9	16.3%	2.5	63.4%
504 Triton	8.2	9.8	10.9	10.0	23.0	14.6	13.0	129.1%	14.8	180.1%
516 Waubensee	<u>7.6</u>	<u>7.9</u>	<u>7.3</u>	<u>9.1</u>	<u>9.4</u>	<u>8.6</u>	<u>0.3</u>	<u>3.2%</u>	<u>1.8</u>	<u>24.0%</u>
TOTALS/AVERAGES	10.9	11.3	9.8	11.0	11.6	10.8	0.6	5.3%	0.7	6.6%
Pure										
Minimum	1.3	1.8	3.2	2.6	2.7	3.7	-4.3	-44.6%	-10.3	-58.0%
Maximum	18.8	18.5	18.0	22.0	23.6	21.2	13.0	217.0%	14.8	180.1%
Median	9.6	9.2	7.8	9.3	9.4	9.0	0.4	3.7%	0.4	5.4%
Standard Deviation	4.2	3.9	3.6	3.9	4.5	3.9	2.5	39.9%	3.8	41.9%
Average	9.9	9.6	8.6	9.6	10.1	9.4	0.5	9.2%	0.2	9.4%

SOURCE OF DATA: ICCB Centralized Data System--Annual Course (AC) Data





Illinois Community College Board  
Table B-12  
TOP FIVE DUAL CREDIT COURSE ENROLLMENTS BY COLLEGE  
IN CAREER AND TECHNICAL EDUCATION  
FISCAL YEAR 2023

Dist. No. District/College	48.0508 Welding Technology/Welder	51.3902 Nursing Assistant/Aide and Patient Care Assistant/Aide	52.0701 Entrepreneurship/Entrepreneurial Studies	51.0710 Medical Office Assistant/Specialist	52.0407 Business/Office Automation/Technology/Data Entry	Total
503 Black Hawk	617	72	1	0	0	690
518 Carl Sandburg	42	0	27	0	0	69
508 City Colleges of Chicago	(26)	(0)	(115)	(217)	(126)	(484)
02 Harold Washington	11	0	0	11	16	38
04 Harry S Truman	0	0	1	3	23	27
01 Kennedy-King	0	0	75	8	13	96
03 Malcolm X	1	0	1	104	42	148
05 Olive-Harvey	1	0	37	1	15	54
06 Richard J. Daley	13	0	1	75	15	104
07 Wilbur Wright	0	0	0	15	2	17
502 College of DuPage	95	198	158	93	0	544
532 College of Lake County	118	158	0	294	0	570
507 Danville Area	20	6	0	42	7	75
509 Elgin	22	106	2	0	0	130
512 Harper	0	807	182	375	199	1,563
540 Heartland	141	125	7	101	0	374
519 Highland	30	47	0	0	0	77
514 Illinois Central	228	198	0	247	0	673
529 Illinois Eastern	(227)	(94)	(0)	(54)	(1)	(376)
04 Frontier	41	28	0	13	1	83
01 Lincoln Trail	101	21	0	6	0	128
02 Olney Central	34	18	0	1	0	53
03 Wabash Valley	51	27	0	34	0	112
513 Illinois Valley	106	40	15	11	0	172
530 John A. Logan	0	96	0	0	0	96
539 John Wood	45	9	0	0	11	65
525 Joliet Junior	287	183	138	0	0	608
520 Kankakee	94	94	5	0	0	193
501 Kaskaskia	60	71	80	153	901	1,265
523 Kishwaukee	69	31	0	21	0	121
517 Lake Land	198	145	44	11	23	421
536 Lewis and Clark	245	0	73	33	0	351
526 Lincoln Land	57	23	61	0	0	141
528 McHenry County	0	125	0	0	0	125
524 Moraine Valley	59	0	118	0	630	807
527 Morton	112	0	0	0	230	342
535 Oakton	83	162	153	403	0	801
505 Parkland	48	54	24	104	0	230
515 Prairie State	73	0	110	0	0	183
521 Rend Lake	4	36	0	0	0	40
537 Richland	68	27	0	0	144	239
511 Rock Valley	12	41	0	0	5	58
506 Sauk Valley	99	158	22	67	6	352
531 Shawnee	0	46	0	53	0	99
510 South Suburban	34	0	241	365	0	640
533 Southeastern Illinois	147	14	37	0	0	198
522 Southwestern Illinois	275	80	1388	86	446	2,275
534 Spoon River	82	18	0	0	0	100
504 Triton	13	104	0	29	0	146
516 Waubensee	<u>427</u>	<u>22</u>	<u>0</u>	<u>127</u>	<u>0</u>	<u>576</u>
TOTALS	4,263	3,390	3,001	2,886	2,729	16,269
Grand Total	163,283	163,283	163,283	163,283	163,283	163,283
Percent Top Five of Grand Total	2.6%	2.1%	1.8%	1.8%	1.7%	10.0%

SOURCE OF DATA: ICCB Centralized Data System--Annual Course (AC) Data



Illinois Community College Board  
Table B-13  
STATEWIDE DUAL CREDIT COURSE ENROLLMENT BY 6-DIGIT CIP  
FOR FISCAL YEARS 2019-2023

CIP	COURSE NAME	2019	2020	2021	2022	2023	FY 2021-2023 3-Year Average	FY 2022-2023 1-Year Difference		FY 2019-2023 5-Year Difference	
							Number	Number	Percent	Number	Percent
01.0000	Agriculture, General.	0	1	0	2	9	4	7	350.0%	9	--
01.0101	Agricultural Business and Management, General.	185	225	202	247	263	237	16	6.5%	78	42.2%
01.0102	Agribusiness/Agricultural Business Operations.	0	20	4	17	9	10	-8	-47.1%	9	--
01.0103	Agricultural Economics.	43	51	78	63	94	78	31	49.2%	51	118.6%
01.0105	Agricultural/Farm Supplies Retailing and Wholesaling.	15	15	36	36	55	42	19	52.8%	40	266.7%
01.0106	Agricultural Business Technology/Technician.	0	4	0	9	0	3	-9	-100.0%	0	--
01.0201	Agricultural Mechanization, General.	103	100	143	106	187	145	81	76.4%	84	81.6%
01.0301	Agricultural Production Operations, General.	174	150	198	195	193	195	-2	-1.0%	19	10.9%
01.0302	Animal/Livestock Husbandry and Production.	164	264	195	349	328	291	-21	-6.0%	164	100.0%
01.0303	Aquaculture.	0	25	23	11	16	17	5	45.5%	16	--
01.0304	Crop Production.	27	70	95	145	145	128	0	0.0%	118	437.0%
01.0308	Agroecology and Sustainable Agriculture.	0	0	0	21	1	7	-20	-95.2%	1	--
01.0507	Equestrian/Equine Studies.	0	0	2	0	3	2	3	--	3	--
01.0508	Taxidermy/Taxidermist.	1	0	0	0	0	0	0	--	-1	-100.0%
01.0601	Applied Horticulture/Horticulture Operations, General.	161	196	145	119	238	167	119	100.0%	77	47.8%
01.0603	Ornamental Horticulture.	348	304	301	362	323	329	-39	-10.8%	-25	-7.2%
01.0604	Greenhouse Operations and Management.	89	42	89	45	156	97	111	246.7%	67	75.3%
01.0605	Landscaping and Groundskeeping.	47	36	56	85	80	74	-5	-5.9%	33	70.2%
01.0606	Plant Nursery Operations and Management.	0	0	0	0	6	2	6	--	6	--
01.0607	Turf and Turfgrass Management.	0	35	0	16	4	7	-12	-75.0%	4	--
01.0901	Animal Sciences, General.	26	40	76	76	84	79	8	10.5%	58	223.1%
01.1101	Plant Sciences, General.	0	0	0	1	0	0	-1	-100.0%	0	--
01.1102	Agronomy and Crop Science.	57	108	140	106	126	124	20	18.9%	69	121.1%
01.1103	Horticultural Science.	127	108	94	128	144	122	16	12.5%	17	13.4%
01.1201	Soil Science and Agronomy, General	0	0	3	8	36	16	28	350.0%	36	--
01.8301	Veterinary/Animal Health Technology/Technician and Veterinary Assistant. (Moved from 51.0808)	84	84	62	81	100	81	19	23.5%	16	19.0%
01.9994	Career Exploration.	11	7	6	12	11	10	-1	-8.3%	0	0.0%
01.9996	Certification/Licensure Review.	0	8	17	0	10	9	10	--	10	--
01.9997	Topics.	30	17	25	49	34	36	-15	-30.6%	4	13.3%
01.9998	Internships.	1	0	0	0	0	0	0	--	-1	-100.0%
01.9999	Agricultural/Animal/Plant/Veterinary Science and Related Fields, Other.	0	22	41	59	31	44	-28	-47.5%	31	--
03.0101	Natural Resources/Conservation, General.	2	0	0	0	0	0	0	--	-2	-100.0%
03.0511	Forest Technology/Technician.	24	0	0	0	0	0	0	--	-24	-100.0%
03.0601	Wildlife, Fish and Wildlands Science and Management.	26	8	13	0	0	4	0	--	-26	-100.0%
04.0201	Architecture.	5	4	3	9	6	6	-3	-33.3%	1	20.0%
04.0902	Architectural and Building Sciences/Technology.	0	0	0	14	15	10	1	7.1%	15	--
05.0101	African Studies.	0	6	0	1	0	0	-1	-100.0%	0	--
05.0103	Asian Studies/Civilization.	0	0	0	4	0	1	-4	-100.0%	0	--
05.0107	Latin American Studies.	37	26	2	21	9	11	-12	-57.1%	-28	-75.7%
05.0108	Near and Middle Eastern Studies.	1	0	2	0	0	1	0	--	-1	-100.0%
05.0127	Japanese Studies.	0	1	0	1	0	0	-1	-100.0%	0	--
05.0201	African-American/Black Studies.	136	120	227	240	391	286	151	62.9%	255	187.5%
05.0202	American Indian/Native American Studies.	1	2	0	0	1	0	1	--	0	0.0%
05.0207	Women's Studies.	0	0	5	1	1	2	0	0.0%	1	--
05.0299	Ethnic, Cultural Minority, Gender, and Group Studies, Other.	3	2	2	0	1	1	1	--	-2	-66.7%
09.0100	Communication, General	0	0	1	1	0	1	-1	-100.0%	0	--
09.0101	Speech Communication and Rhetoric.	257	232	436	397	423	419	26	6.5%	166	64.6%
09.0102	Mass Communication/Media Studies.	20	33	39	60	27	42	-33	-55.0%	7	35.0%
09.0401	Journalism.	280	205	75	119	195	130	76	63.9%	-85	-30.4%
09.0402	Broadcast Journalism.	0	2	2	0	0	1	0	--	0	--
09.0701	Radio and Television.	58	124	69	69	71	70	2	2.9%	13	22.4%
09.0702	Digital Communication and Media/Multimedia.	0	0	14	8	11	11	3	37.5%	11	--
09.0799	Radio, Television, and Digital Communication, Other.	3	0	2	0	0	1	0	--	-3	-100.0%
09.0902	Public Relations/Image Management.	0	0	1	0	0	0	0	--	0	--
09.0903	Advertising.	1	4	3	1	12	5	11	1100.0%	11	1100.0%
10.0201	Photographic and Film/Video Technology/Technician.	186	145	123	139	149	137	10	7.2%	-37	-19.9%



Illinois Community College Board  
Table B-13  
STATEWIDE DUAL CREDIT COURSE ENROLLMENT BY 6-DIGIT CIP  
FOR FISCAL YEARS 2019-2023

CIP	COURSE NAME	2019	2020	2021	2022	2023	FY 2021-2023 3-Year Average	FY 2022-2023		FY 2019-2023	
							Number	Number	Percent	Number	Percent
10.0202	Radio and Television Broadcasting Technology/Technician.	0	0	0	0	1	0	1	--	1	--
10.0203	Recording Arts Technology/Technician.	0	0	9	5	1	5	-4	-80.0%	1	--
10.0301	Graphic Communications, General.	19	15	5	3	26	11	23	766.7%	7	36.8%
10.0303	Prepress/Desktop Publishing and Digital Imaging Design.	696	592	327	379	393	366	14	3.7%	-303	-43.5%
10.0304	Animation, Interactive Technology, Video Graphics, and Special Effects.	321	203	201	270	252	241	-18	-6.7%	-69	-21.5%
10.0305	Graphic and Printing Equipment Operator, General Production.	45	36	56	4	4	21	0	0.0%	-41	-91.1%
10.9999	Communications Technologies/Technicians and Support Services, Other. (Designation for vocational communication course enrollees—1.2)	31	23	11	18	22	17	4	22.2%	-9	-29.0%
11.0101	Computer and Information Sciences, General.	1,226	1,013	1,084	751	678	838	-73	-9.7%	-548	-44.7%
11.0103	Information Technology.	133	133	108	295	288	230	-7	-2.4%	155	116.5%
11.0201	Computer Programming/Programmer, General.	2,392	3,154	1,808	2,331	2,461	2,200	130	5.6%	69	2.9%
11.0202	Computer Programming, Specific Applications.	108	212	50	106	143	100	37	34.9%	35	32.4%
11.0203	Computer Programming, Vendor/Product Certification.	21	31	58	0	0	19	0	--	-21	-100.0%
11.0301	Data Processing and Data Processing Technology/Technician.	14	14	20	20	52	31	32	160.0%	38	271.4%
11.0401	Information Science/Studies.	94	110	112	4	3	40	-1	-25.0%	-91	-96.8%
11.0501	Computer Systems Analysis/Analyst.	0	2	2	0	2	1	2	--	2	--
11.0601	Data Entry/Microcomputer Applications, General.	291	238	203	260	250	238	-10	-3.8%	-41	-14.1%
11.0602	Word Processing.	15	12	9	8	33	17	25	312.5%	18	120.0%
11.0701	Computer Science.	0	0	5	0	0	2	0	--	0	--
11.0801	Web Page, Digital/Multimedia and Information Resources Design.	372	441	313	285	314	304	29	10.2%	-58	-15.6%
11.0802	Data Modeling/Warehousing and Database Administration.	13	2	9	10	6	8	-4	-40.0%	-7	-53.8%
11.0803	Computer Graphics.	102	119	66	89	90	82	1	1.1%	-12	-11.8%
11.0901	Computer Systems Networking and Telecommunications.	1,419	1,290	1,310	1,848	1,584	1,581	-264	-14.3%	165	11.6%
11.1003	Computer and Information Systems Security/Auditing/Information Assurance.	9	18	196	270	233	233	-37	-13.7%	224	2488.9%
11.1004	Web/Multimedia Management and Webmaster.	21	21	19	17	9	15	-8	-47.1%	-12	-57.1%
11.1006	Computer Support Specialist.	0	1	1	15	39	18	24	160.0%	39	--
11.1099	Computer/Information Technology Services Administration and Management, Other.	67	32	63	56	50	56	-6	-10.7%	-17	-25.4%
11.9997	Topics.	22	42	11	17	17	15	0	0.0%	-5	-22.7%
12.0401	Cosmetology/Cosmetologist, General.	644	646	516	639	1,017	724	378	59.2%	373	57.9%
12.0402	Barbering/Barber.	0	0	0	60	136	65	76	126.7%	136	--
12.0409	Aesthetician/Esthetician and Skin Care Specialist.	125	128	88	125	179	131	54	43.2%	54	43.2%
12.0410	Nail Technician/Specialist and Manicurist.	0	0	4	2	5	4	3	150.0%	5	--
12.0412	Salon/Beauty Salon Management/Manager.	226	237	189	237	372	266	135	57.0%	146	64.6%
12.0500	Cooking and Related Culinary Arts, General.	11	17	22	43	46	37	3	7.0%	35	318.2%
12.0501	Baking and Pastry Arts/Baker/Pastry Chef.	111	185	191	220	297	236	77	35.0%	186	167.6%
12.0502	Bartending/Bartender.	1	0	0	0	0	0	0	--	-1	-100.0%
12.0503	Culinary Arts/Chef Training.	483	618	680	873	1,013	855	140	16.0%	530	109.7%
12.0504	Restaurant, Culinary, and Catering Management/Manager.	1,515	1,817	1,397	1,648	2,069	1,705	421	25.5%	554	36.6%
12.0505	Food Preparation/Professional Cooking/Kitchen Assistant.	68	205	224	120	133	159	13	10.8%	65	95.6%
12.0507	Food Service, Waiter/Waitress, and Dining Room Management/Manager.	6	17	11	14	0	8	-14	-100.0%	-6	-100.0%
12.9994	Career Exploration.	0	0	7	20	10	12	-10	-50.0%	10	--
12.9996	Certification/Licensure Review.	40	27	22	26	52	33	26	100.0%	12	30.0%
13.0101	Education, General.	128	167	154	215	397	255	182	84.7%	269	210.2%
13.0201	Bilingual and Multilingual Education.	1	0	3	0	4	2	4	--	3	300.0%
13.0299	Bilingual, Multilingual, and Multicultural Education, Other.	28	24	44	33	28	35	-5	-15.2%	0	0.0%
13.0501	Educational/Instructional Technology.	28	30	46	35	30	37	-5	-14.3%	2	7.1%
13.0901	Social and Philosophical Foundations of Education.	329	319	657	463	836	652	373	80.6%	507	154.1%
13.1001	Special Education and Teaching, General.	18	2	11	32	49	31	17	53.1%	31	172.2%
13.1202	Elementary Education and Teaching.	28	6	4	4	19	9	15	375.0%	-9	-32.1%
13.1210	Early Childhood Education and Teaching.	105	168	140	70	139	116	69	98.6%	34	32.4%
13.1301	Agricultural Teacher Education.	12	0	2	0	11	4	11	--	-1	-8.3%
13.1302	Art Teacher Education.	0	1	0	0	0	0	0	--	0	--
13.1307	Health Teacher Education.	315	367	305	340	444	363	104	30.6%	129	41.0%
13.1314	Physical Education Teaching and Coaching.	4	5	23	23	9	18	-14	-60.9%	5	125.0%
13.1501	Teacher Assistant/Aide.	4	1	12	15	21	16	6	40.0%	17	425.0%
13.9997	Topics.	7	42	19	450	14	161	-436	-96.9%	7	100.0%
13.9998	Internships.	17	40	36	65	139	80	74	113.8%	122	717.6%





Illinois Community College Board  
Table B-13  
STATEWIDE DUAL CREDIT COURSE ENROLLMENT BY 6-DIGIT CIP  
FOR FISCAL YEARS 2019-2023

CIP	COURSE NAME	2019	2020	2021	2022	2023	FY 2021-2023 3-Year Average	FY 2022-2023 1-Year Difference		FY 2019-2023 5-Year Difference	
							Number	Number	Percent	Number	Percent
14.0101	Engineering, General.	3	12	11	21	10	14	-11	-52.4%	7	233.3%
14.1101	Engineering Mechanics.	7	1	2	2	6	3	4	200.0%	-1	-14.3%
14.1201	Engineering Physics/Applied Physics.	18	32	21	26	39	29	13	50.0%	21	116.7%
14.4201	Mechatronics, Robotics, and Automation Engineering.	0	7	40	124	23	62	-101	-81.5%	23	--
15.0000	Engineering Technologies/Technicians, General.	10	35	24	32	29	28	-3	-9.4%	19	190.0%
15.0101	Architectural Engineering Technologies/Technicians.	32	50	37	34	41	37	7	20.6%	9	28.1%
15.0201	Civil Engineering Technologies/Technicians.	10	39	66	42	51	53	9	21.4%	41	410.0%
15.0303	Electrical, Electronic, and Communications Engineering Technology/Technician.	314	326	299	515	447	420	-68	-13.2%	133	42.4%
15.0304	Laser and Optical Technology/Technician.	17	21	3	12	2	6	-10	-83.3%	-15	-88.2%
	Telecommunications Technology/Technician. (Includes existing programs in 2020 moved from										
15.0305	15.0310)	0	1	0	0	0	0	0	--	0	--
15.0306	Integrated Circuit Design Technology/Technician.	0	0	0	13	11	8	-2	-15.4%	11	--
15.0310	Telecommunication Electronics Technology (Cross to 15.0305 for IPEDS)	0	0	0	0	17	6	17	--	17	--
15.0403	Electromechanical/Electromechanical Engineering Technology/Technician.	11	9	8	7	835	283	828	11828.6%	824	7490.9%
15.0405	Robotics Technology/Technician.	20	1	12	19	8	13	-11	-57.9%	-12	-60.0%
15.0406	Automation Engineer Technology/Technician.	284	206	174	204	240	206	36	17.6%	-44	-15.5%
15.0411	Automated Manufacturing Technology (Cross to 15.0499 for IPEDS)	445	0	0	0	0	0	0	--	-445	-100.0%
15.0499	Electromechanical Technologies/Technicians, Other.	0	870	770	898	77	582	-821	-91.4%	77	--
15.0612	Industrial Technology/Technician.	0	19	23	1	25	16	24	2400.0%	25	--
15.0613	Manufacturing Engineering Technology/Technician.	285	463	624	673	735	677	62	9.2%	450	157.9%
15.0614	Welding Engineering Technology/Technician.	0	0	1	17	27	15	10	58.8%	27	--
15.0701	Occupational Safety and Health Technology/Technician.	127	120	83	102	104	96	2	2.0%	-23	-18.1%
15.0702	Quality Control Technology/Technician.	99	99	82	45	44	57	-1	-2.2%	-55	-55.6%
15.0703	Industrial Safety Technology/Technician.	27	8	34	0	6	13	6	--	-21	-77.8%
15.0805	Mechanical Engineering/Mechanical Technology/Technician.	0	0	0	0	12	4	12	--	12	--
15.0901	Mining Technology/Technician.	10	0	0	0	0	0	0	--	-10	-100.0%
	Hydraulics and Fluid Power Technology/Technician. (Includes existing programs in 2020										
15.1103	moved from 15.0410)	15	0	0	3	0	1	-3	-100.0%	-15	-100.0%
15.1201	Computer Engineering Technology/Technician.	212	224	183	235	253	224	18	7.7%	41	19.3%
15.1202	Computer/Computer Systems Technology/Technician.	0	0	1	0	0	0	0	--	0	--
15.1203	Computer Hardware Technology/Technician.	56	67	65	112	77	85	-35	-31.3%	21	37.5%
15.1301	Drafting and Design Technology/Technician, General.	1,076	1,283	1,023	986	1,419	1,143	433	43.9%	343	31.9%
	CAD/CADD Drafting and/or Design Technology/Technician. (Includes existing programs in										
15.1302	2020 moved from 15.0810)	1,662	1,644	1,165	1,480	1,760	1,468	280	18.9%	98	5.9%
15.1303	Architectural Drafting and Architectural CAD/CADD.	85	123	137	140	154	144	14	10.0%	69	81.2%
15.1306	Mechanical Drafting and Mechanical Drafting CAD/CADD.	8	47	88	104	110	101	6	5.8%	102	1275.0%
15.1601	Nanotechnology.	33	38	59	0	0	20	0	--	-33	-100.0%
15.1701	Energy Systems Technology/Technician.	0	0	0	1	1	1	0	0.0%	1	--
15.9995	Supervised Independent Study.	0	0	0	0	75	25	75	--	75	--
15.9997	Topics.	157	128	35	44	41	40	-3	-6.8%	-116	-73.9%
15.9998	Internships.	0	1	0	1	0	0	-1	-100.0%	0	--
15.9999	Engineering/Engineering-Related Technologies/Technicians, Other.	29	23	20	25	26	24	1	4.0%	-3	-10.3%
16.0301	Chinese Language and Literature.	6	9	7	11	27	15	16	145.5%	21	350.0%
16.0302	Japanese Language and Literature.	29	34	27	19	34	27	15	78.9%	5	17.2%
16.0501	German Language and Literature.	168	168	313	531	636	493	105	19.8%	468	278.6%
16.0901	French Language and Literature.	250	214	375	647	532	518	-115	-17.8%	282	112.8%
16.0902	Italian Language and Literature.	18	22	20	26	0	15	-26	-100.0%	-18	-100.0%
16.0905	Spanish Language and Literature.	5,538	5,344	4,994	6,403	6,748	6,048	345	5.4%	1,210	21.8%
16.0997	Topics.	0	0	186	0	0	62	0	--	0	--
16.1101	Arabic Language and Literature.	51	59	49	43	46	46	3	7.0%	-5	-9.8%
16.1601	American Sign Language (ASL).	55	44	41	34	91	55	57	167.6%	36	65.5%
16.1603	Sign Language Interpretation and Translation.	50	52	35	41	38	38	-3	-7.3%	-12	-24.0%
16.9996	Certification/Licensure Review.	46	32	28	21	34	28	13	61.9%	-12	-26.1%
19.0101	Family and Consumer Sciences/Human Sciences, General.	1,420	1,481	1,450	2,006	1,855	1,770	-151	-7.5%	435	30.6%
19.0401	Family Resource Management Studies, General.	0	1	1	0	1	1	1	--	1	--
19.0402	Consumer Economics.	3	0	5	26	15	15	-11	-42.3%	12	400.0%
19.0501	Foods, Nutrition, and Wellness Studies, General.	75	60	73	91	109	91	18	19.8%	34	45.3%



Illinois Community College Board  
Table B-13  
STATEWIDE DUAL CREDIT COURSE ENROLLMENT BY 6-DIGIT CIP  
FOR FISCAL YEARS 2019-2023

CIP	COURSE NAME	2019	2020	2021	2022	2023	FY 2021-2023 3-Year Average	FY 2022-2023		FY 2019-2023	
							Number	Number	Percent	Number	Percent
19.0504	Human Nutrition.	106	107	121	162	168	150	6	3.7%	62	58.5%
19.0701	Human Development and Family Studies, General.	0	9	6	18	16	13	-2	-11.1%	16	--
19.0706	Child Development. (Includes existing programs in 2020 moved from 20.0102)	33	15	11	10	16	12	6	60.0%	-17	-51.5%
19.0708	Child Care and Support Services Management.	0	1	1	0	0	0	0	--	0	--
19.0709	Child Care Provider/Assistant.	874	936	760	801	828	796	27	3.4%	-46	-5.3%
19.0901	Apparel and Textiles, General. (Includes existing programs in 2020 moved from 20.0103)	43	42	20	62	37	40	-25	-40.3%	-6	-14.0%
19.0902	Apparel and Textile Manufacture.	23	22	13	8	13	11	5	62.5%	-10	-43.5%
19.9997	Topics.	32	33	34	32	16	27	-16	-50.0%	-16	-50.0%
19.9999	Family and Consumer Sciences/Human Sciences, Other.	0	0	0	22	24	15	2	9.1%	24	--
22.0302	Legal Assistant/Paralegal.	3	1	3	0	1	1	1	--	-2	-66.7%
23.0101	English Language and Literature, General.	260	359	392	356	469	406	113	31.7%	209	80.4%
23.1301	Writing, General.	19,798	20,961	21,259	22,122	26,363	23,248	4,241	19.2%	6,565	33.2%
23.1302	Creative Writing.	73	80	70	46	66	61	20	43.5%	-7	-9.6%
23.1303	Professional, Technical, Business, and Scientific Writing.	188	162	169	122	140	144	18	14.8%	-48	-25.5%
23.1304	Rhetoric and Composition.	4,406	4,746	5,537	5,553	5,805	5,632	252	4.5%	1,399	31.8%
23.1401	General Literature.	0	0	6	0	0	2	0	--	0	--
23.1402	American Literature (United States).	718	819	808	834	1091	911	257	30.8%	373	51.9%
23.1404	English Literature (British and Commonwealth).	139	272	154	295	104	184	-191	-64.7%	-35	-25.2%
23.1405	Children's and Adolescent Literature.	0	2	0	1	0	0	-1	-100.0%	0	--
23.9997	Topics.	0	1	28	0	0	9	0	--	0	--
24.0101	Liberal Arts and Sciences/Liberal Studies.	4	0	9	7	28	15	21	300.0%	24	600.0%
24.0102	General Studies.	1,555	1,500	1,834	1,955	1,868	1,886	-87	-4.5%	313	20.1%
24.0103	Humanities/Humanistic Studies.	373	470	408	498	443	450	-55	-11.0%	70	18.8%
24.0105	Orientation Courses (Cross to 24.0199 for IPEDS)	626	589	432	282	319	344	37	13.1%	-307	-49.0%
24.0197	Special Topics.	0	0	0	2	1	1	-1	-50.0%	1	--
24.0198	Internships.	154	94	50	60	46	52	-14	-23.3%	-108	-70.1%
24.0199	Liberal Arts and Sciences, General Studies and Humanities, Other.	0	120	112	41	39	64	-2	-4.9%	39	--
24.9997	Topics.	11	15	17	6	6	10	0	0.0%	-5	-45.5%
24.9999	Directed Independent Study	7	0	0	0	0	0	0	--	-7	-100.0%
26.0101	Biology/Biological Sciences, General. (Includes existing programs in 2020 moved from 26.0699)	2,709	2,831	2,947	3,441	3,220	3,203	-221	-6.4%	511	18.9%
26.0301	Botany/Plant Biology.	3	7	3	10	30	14	20	200.0%	27	900.0%
26.0403	Anatomy.	1,214	1,424	1,623	1,505	1,591	1,573	86	5.7%	377	31.1%
26.0406	Cell/Cellular and Molecular Biology.	0	2	8	3	6	6	3	100.0%	6	--
26.0502	Microbiology, General.	25	33	40	46	35	40	-11	-23.9%	10	40.0%
26.0701	Zoology/Animal Biology.	124	74	62	34	45	47	11	32.4%	-79	-63.7%
26.0801	Genetics, General.	5	14	55	47	73	58	26	55.3%	68	1360.0%
26.0910	Pathology/Experimental Pathology.	0	25	0	0	0	0	0	--	0	--
26.1001	Pharmacology.	47	24	25	19	22	22	3	15.8%	-25	-53.2%
26.1301	Ecology.	152	108	89	233	270	197	37	15.9%	118	77.6%
26.1302	Marine Biology and Biological Oceanography.	101	100	0	1	0	0	-1	-100.0%	-101	-100.0%
26.1303	Evolutionary Biology.	0	0	0	0	1	0	1	--	1	--
26.1305	Environmental Biology.	331	393	389	446	465	433	19	4.3%	134	40.5%
27.0101	Mathematics, General.	7,093	7,900	8,643	8,267	8,706	8,539	439	5.3%	1,613	22.7%
27.0103	Analysis and Functional Analysis.	52	53	52	56	57	55	1	1.8%	5	9.6%
27.0301	Applied Mathematics, General.	1,797	1,977	1,931	2,234	2,444	2,203	210	9.4%	647	36.0%
27.0304	Computational and Applied Mathematics.	0	0	0	3	0	1	-3	-100.0%	0	--
27.0501	Statistics, General.	2,625	2,952	3,214	3,648	4,282	3,715	634	17.4%	1,657	63.1%
30.0101	Biological and Physical Sciences.	80	41	76	72	40	63	-32	-44.4%	-40	-50.0%
30.0197	Topics.	21	17	19	12	0	10	-12	-100.0%	-21	-100.0%
30.1101	Gerontology.	0	0	0	0	3	1	3	--	3	--
30.2301	Intercultural/Multicultural and Diversity Studies.	0	1	0	0	0	0	0	--	0	--
30.3301	Sustainability Studies.	0	13	14	0	0	5	0	--	0	--
31.0101	Parks, Recreation and Leisure Studies.	1	0	2	1	2	2	1	100.0%	1	100.0%
31.0301	Parks, Recreation, and Leisure Facilities Management, General.	0	5	2	0	0	1	0	--	0	--
31.0501	Sports, Kinesiology, and Physical Education/Fitness, General.	2,211	2,142	2,999	3,761	4,874	3,878	1,113	29.6%	2,663	120.4%
31.0504	Sport and Fitness Administration/Management.	0	12	56	3	3	21	0	0.0%	3	--



Illinois Community College Board  
Table B-13  
STATEWIDE DUAL CREDIT COURSE ENROLLMENT BY 6-DIGIT CIP  
FOR FISCAL YEARS 2019-2023

CIP	COURSE NAME	2019	2020	2021	2022	2023	FY 2021-2023 3-Year Average	FY 2022-2023 1-Year Difference		FY 2019-2023 5-Year Difference	
							Number	Number	Percent	Number	Percent
32.0107	Career Exploration/Awareness Skills.	68	127	112	215	275	201	60	27.9%	207	304.4%
36.0202	Aircraft Pilot (Private) (Moved from 36.0119)	16	17	12	16	18	15	2	12.5%	2	12.5%
38.0101	Philosophy.	285	309	197	237	208	214	-29	-12.2%	-77	-27.0%
38.0102	Logic.	104	101	77	94	107	93	13	13.8%	3	2.9%
38.0103	Ethics.	265	311	209	245	298	251	53	21.6%	33	12.5%
38.0201	Religion/Religious Studies.	327	300	237	232	230	233	-2	-0.9%	-97	-29.7%
40.0101	Physical Sciences, General.	29	55	64	56	74	65	18	32.1%	45	155.2%
40.0201	Astronomy.	215	156	152	180	164	165	-16	-8.9%	-51	-23.7%
40.0401	Atmospheric Sciences and Meteorology, General.	29	20	69	56	68	64	12	21.4%	39	134.5%
40.0499	Atmospheric Sciences and Meteorology, Other.	1	0	1	0	0	0	0	--	-1	-100.0%
40.0501	Chemistry, General.	726	730	832	969	1,088	963	119	12.3%	362	49.9%
40.0503	Inorganic Chemistry.	196	162	147	134	169	150	35	26.1%	-27	-13.8%
40.0504	Organic Chemistry.	49	58	54	43	26	41	-17	-39.5%	-23	-46.9%
40.0599	Chemistry, Other.	9	3	9	23	14	15	-9	-39.1%	5	55.6%
40.0601	Geology/Earth Science, General.	636	722	644	724	718	695	-6	-0.8%	82	12.9%
40.0603	Geophysics and Seismology.	1	8	6	9	12	9	3	33.3%	11	1100.0%
40.0607	Oceanography, Chemical and Physical.	58	25	5	38	3	15	-35	-92.1%	-55	-94.8%
40.0801	Physics, General.	284	257	299	169	188	219	19	11.2%	-96	-33.8%
40.9996	Certification/Licensure Review.	0	0	0	0	2	1	2	--	2	--
42.0101	Psychology, General.	3522	3467	3547	3,806	4,336	3,896	530	13.9%	814	23.1%
42.2701	Cognitive Psychology and Psycholinguistics.	25	13	2	33	0	12	-33	-100.0%	-25	-100.0%
42.2703	Developmental and Child Psychology.	490	533	553	570	593	572	23	4.0%	103	21.0%
42.2707	Social Psychology.	66	133	105	88	90	94	2	2.3%	24	36.4%
42.2804	Industrial and Organizational Psychology.	0	2	0	3	3	2	0	0.0%	3	--
42.2806	Educational Psychology.	9	22	19	11	7	12	-4	-36.4%	-2	-22.2%
42.9996	Certification/Licensure Review.	0	0	0	1	1	1	0	0.0%	1	--
43.0102	Corrections.	183	240	182	86	196	155	110	127.9%	13	7.1%
43.0103	Criminal Justice/Law Enforcement Administration.	367	388	346	436	305	362	-131	-30.0%	-62	-16.9%
43.0104	Criminal Justice/Safety Studies.	219	169	181	224	241	215	17	7.6%	22	10.0%
43.0107	Criminal Justice/Police Science.	1,316	1,347	1,235	1,380	1,314	1,310	-66	-4.8%	-2	-0.2%
43.0109	Security and Loss Prevention Services.	0	8	12	0	0	4	0	--	0	--
43.0114	Law Enforcement Investigation and Interviewing.	2	0	3	0	4	2	4	--	2	100.0%
43.0199	Corrections and Criminal Justice, Other.	44	30	56	7	66	43	59	842.9%	22	50.0%
43.0201	Fire Prevention and Safety Technology/Technician.	145	165	137	153	158	149	5	3.3%	13	9.0%
43.0202	Fire Services Administration.	15	12	10	12	34	19	22	183.3%	19	126.7%
43.0203	Fire Science/Fire-fighting.	470	414	390	403	435	409	32	7.9%	-35	-7.4%
43.0204	Fire Systems Technology.	5	12	9	10	9	9	-1	-10.0%	4	80.0%
43.0301	Homeland Security.	0	0	0	28	21	16	-7	-25.0%	21	--
43.0403	Cyber/Computer Forensics and Counterterrorism (Moved from 43.0116)	0	0	14	9	14	12	5	55.6%	14	--
43.0406	Forensic Science and Technology. (Moved from 43.0106)	67	78	126	171	182	160	11	6.4%	115	171.6%
43.9994	Career Exploration.	94	79	19	16	43	26	27	168.8%	-51	-54.3%
43.9997	Topics.	15	9	7	7	15	10	8	114.3%	0	0.0%
43.9998	Internship.	13	12	9	8	28	15	20	250.0%	15	115.4%
44.0701	Social Work.	55	66	54	107	151	104	44	41.1%	96	174.5%
45.0101	Social Sciences, General.	71	34	22	32	47	34	15	46.9%	-24	-33.8%
45.0201	Anthropology, General.	178	161	92	66	83	80	17	25.8%	-95	-53.4%
45.0301	Archeology.	1	0	1	2	0	1	-2	-100.0%	-1	-100.0%
45.0401	Criminology.	105	53	113	74	142	110	68	91.9%	37	35.2%
45.0501	Demography and Population Studies.	0	1	1	0	2	1	2	--	2	--
45.0601	Economics, General.	770	868	631	666	758	685	92	13.8%	-12	-1.6%
45.0701	Geography.	102	98	125	93	83	100	-10	-10.8%	-19	-18.6%
45.0901	International Relations and Affairs.	61	126	69	80	88	79	8	10.0%	27	44.3%
45.1001	Political Science and Government, General.	1,155	1,181	1,483	1,479	1,604	1,522	125	8.5%	449	38.9%
45.1101	Sociology, General.	1,320	1,357	1,381	1616	1816	1,604	200	12.4%	496	37.6%
45.9997	Topics.	20	7	0	4	1	2	-3	-75.0%	-19	-95.0%
46.0000	Construction Trades, General.	39	37	25	39	33	32	-6	-15.4%	-6	-15.4%
46.0201	Carpentry/Carpenter.	471	588	671	985	808	821	-177	-18.0%	337	71.5%





Illinois Community College Board  
Table B-13  
STATEWIDE DUAL CREDIT COURSE ENROLLMENT BY 6-DIGIT CIP  
FOR FISCAL YEARS 2019-2023

CIP	COURSE NAME	2019	2020	2021	2022	2023	FY 2021-2023 3-Year Average	FY 2022-2023		FY 2019-2023	
							Number	Number	Percent	Number	Percent
46.0299	Carpenter/Construction, Other.	10	20	16	36	61	38	25	69.4%	51	510.0%
46.0302	Electrician.	38	28	33	37	55	42	18	48.6%	17	44.7%
46.0401	Building/Property Maintenance.	99	0	0	0	0	0	0	--	-99	-100.0%
46.0403	Building/Home/Construction Inspection/Inspector.	26	37	27	30	28	28	-2	-6.7%	2	7.7%
46.0415	Building Construction Technology/Technician.	0	0	1	78	65	48	-13	-16.7%	65	--
47.0103	Communications Systems Installation and Repair Technology/Technician.	0	5	13	12	0	8	-12	-100.0%	0	--
47.0104	Computer Installation and Repair Technology/Technician.	506	538	280	503	364	382	-139	-27.6%	-142	-28.1%
47.0105	Industrial Electronics Technology/Technician.	10	42	44	25	39	36	14	56.0%	29	290.0%
47.0199	Electrical/Electronics Maintenance and Repair Technologies/Technicians, Other.	64	10	0	0	0	0	0	--	-64	-100.0%
47.0201	Heating, Air Conditioning, Ventilation and Refrigeration Maintenance Technology/Technician.	49	52	62	77	111	83	34	44.2%	62	126.5%
47.0303	Industrial Mechanics and Maintenance Technology/Technician.	2	0	23	9	50	27	41	455.6%	48	2400.0%
47.0603	Autobody/Collision and Repair Technology/Technician.	166	99	77	82	121	93	39	47.6%	-45	-27.1%
47.0604	Automobile/Automotive Mechanics Technology/Technician.	1,614	2,028	1,699	2,204	2,588	2,164	384	17.4%	974	60.3%
47.0605	Diesel Mechanics Technology/Technician.	102	69	36	47	115	66	68	144.7%	13	12.7%
47.0606	Small Engine Mechanics and Repair Technology/Technician.	43	42	22	31	127	60	96	309.7%	84	195.3%
47.0611	Motorcycle Maintenance and Repair Technology/Technician.	0	0	6	4	7	6	3	75.0%	7	--
47.0614	Alternative Fuel Vehicle Technology/Technician.	0	0	0	3	2	2	-1	-33.3%	2	--
47.9994	Career Exploration.	28	0	0	0	0	0	0	--	-28	-100.0%
47.9996	Certification/Licensure Review.	1	2	3	9	9	7	0	0.0%	8	800.0%
47.9997	Topics.	31	10	6	1	16	8	15	1500.0%	-15	-48.4%
47.9998	Internship.	0	0	0	5	0	2	-5	-100.0%	0	--
47.9999	Mechanic and Repair Technologies/Technicians, Other.	0	4	27	28	37	31	9	32.1%	37	--
48.0000	Precision Production Trades, General.	0	0	0	0	14	5	14	--	14	--
48.0501	Machine Tool Technology/Machinist.	77	110	83	86	104	91	18	20.9%	27	35.1%
48.0503	Machine Shop Technology/Assistant.	708	877	641	733	687	687	-46	-6.3%	-21	-3.0%
48.0506	Sheet Metal Technology/Sheetworking.	1	81	64	60	77	67	17	28.3%	76	7600.0%
48.0508	Welding Technology/Welder. (Includes existing programs in 2020 moved from 15.0610)	2,945	3,047	2,381	3,198	4,263	3,281	1,065	33.3%	1,318	44.8%
48.0510	Computer Numerically Controlled (CNC) Machinist Technology/CNC Machinist.	13	26	37	64	163	88	99	154.7%	150	1153.8%
48.0599	Precision Metal Working, Other.	33	41	19	29	22	23	-7	-24.1%	-11	-33.3%
48.9995	Supervised Independent Study.	0	0	9	6	0	5	-6	-100.0%	0	--
48.9997	Topics.	14	12	12	15	18	15	3	20.0%	4	28.6%
49.0102	Airline/Commercial/Professional Pilot and Flight Crew.	8	12	10	9	9	9	0	0.0%	1	12.5%
49.0199	Air Transportation, Other.	0	0	0	0	51	17	51	--	51	--
49.0205	Truck and Bus Driver/Commercial Vehicle Operator and Instructor.	0	0	0	0	4	1	4	--	4	--
50.0101	Visual and Performing Arts, General.	21	19	34	23	32	30	9	39.1%	11	52.4%
50.0201	Crafts/Craft Design, Folk Art and Artisanry.	0	22	19	14	20	18	6	42.9%	20	--
50.0301	Dance, General.	7	12	8	0	12	7	12	--	5	71.4%
50.0302	Ballet.	7	0	9	0	13	7	13	--	6	85.7%
50.0401	Design and Visual Communications, General.	504	550	386	570	578	511	8	1.4%	74	14.7%
50.0406	Commercial Photography.	912	912	725	634	594	651	-40	-6.3%	-318	-34.9%
50.0408	Interior Design.	0	0	14	48	96	53	48	100.0%	96	--
50.0409	Graphic Design.	2	18	0	97	109	69	12	12.4%	107	5350.0%
50.0501	Drama and Dramatics/Theatre Arts, General.	113	128	146	107	192	148	85	79.4%	79	69.9%
50.0502	Technical Theatre/Theatre Design and Technology	0	0	0	1	0	0	-1	-100.0%	0	--
50.0505	Theatre Literature, History and Criticism.	0	0	1	0	1	1	1	--	1	--
50.0506	Acting.	20	18	95	41	11	49	-30	-73.2%	-9	-45.0%
50.0599	Dramatic/Theatre Arts and Stagecraft, Other.	0	9	17	13	10	13	-3	-23.1%	10	--
50.0601	Film/Cinema/Media Studies.	20	23	31	38	63	44	25	65.8%	43	215.0%
50.0602	Cinematography and Film/Video Production.	166	181	160	113	174	149	61	54.0%	8	4.8%
50.0605	Photography.	221	130	90	186	287	188	101	54.3%	66	29.9%
50.0701	Art/Art Studies, General.	451	507	504	608	642	585	34	5.6%	191	42.4%
50.0702	Fine/Studio Arts, General.	0	0	0	0	3	1	3	--	3	--
50.0703	Art History, Criticism and Conservation.	105	203	180	181	177	179	-4	-2.2%	72	68.6%
50.0705	Drawing.	99	86	105	75	92	91	17	22.7%	-7	-7.1%
50.0708	Painting.	2	2	2	6	10	6	4	66.7%	8	400.0%
50.0710	Printmaking.	0	0	0	0	49	16	49	--	49	--
50.0711	Ceramic Arts and Ceramics.	26	65	39	34	39	37	5	14.7%	13	50.0%



Illinois Community College Board  
Table B-13  
STATEWIDE DUAL CREDIT COURSE ENROLLMENT BY 6-DIGIT CIP  
FOR FISCAL YEARS 2019-2023

CIP	COURSE NAME	2019	2020	2021	2022	2023	FY 2021-2023 3-Year Average	FY 2022-2023		FY 2019-2023	
							Number	Number	Percent	Number	Percent
50.0713	Jewelry Arts.	0	0	0	1	0	0	-1	-100.0%	0	--
50.0901	Music, General	0	0	10	0	0	3	0	--	0	--
50.0902	Music History, Literature, and Theory.	1,250	1,041	1,197	1,085	1,159	1,147	74	6.8%	-91	-7.3%
50.0903	Music Performance, General.	218	405	335	399	450	395	51	12.8%	232	106.4%
50.0904	Music Theory and Composition.	59	89	74	186	184	148	-2	-1.1%	125	211.9%
50.0910	Jazz/Jazz Studies.	3	0	0	0	10	3	10	--	7	233.3%
50.0913	Music Technology.	2	0	0	1	0	0	-1	-100.0%	-2	-100.0%
50.9996	Certification/Licensure Review.	0	1	0	0	0	0	0	--	0	--
50.9997	Topics.	0	4	9	8	15	11	7	87.5%	15	--
51.0000	Health Services/Allied Health/Health Sciences, General.	1,184	1,506	1,515	2121	1946	1,861	-175	-8.3%	762	64.4%
51.0001	Health and Wellness, General.	12	0	0	0	0	0	0	--	-12	-100.0%
51.0705	Medical Office Management/Administration.	0	2	1	0	1	1	1	--	1	--
51.0707	Health Information/Medical Records Technology/Technician.	404	273	345	239	307	297	68	28.5%	-97	-24.0%
51.0708	Medical Transcription/Transcriptionist.	128	180	205	159	121	162	-38	-23.9%	-7	-5.5%
51.0710	Medical Office Assistant/Specialist.	2,269	2,803	2,807	2,777	2,886	2,823	109	3.9%	617	27.2%
51.0714	Medical Insurance Specialist/Medical Biller.	0	2	0	0	1	0	1	--	1	--
51.0801	Medical/Clinical Assistant.	65	51	81	79	88	83	9	11.4%	23	35.4%
51.0805	Pharmacy Technician/Assistant.	0	2	1	0	3	1	3	--	3	--
51.0810	Emergency Care Attendant (EMT Ambulance).	0	0	1	0	1	1	1	--	1	--
51.0904	Emergency Medical Technology/Technician (EMT Paramedic).	348	416	352	398	428	393	30	7.5%	80	23.0%
51.0907	Medical Radiologic Technology/Science - Radiation Therapist.	4	0	0	0	1	0	1	--	-3	-75.0%
51.0908	Respiratory Care Therapy/Therapist.	21	8	0	0	0	0	0	--	-21	-100.0%
51.0913	Athletic Training/Trainer.	0	0	3	0	1	1	1	--	1	--
51.1004	Clinical/Medical Laboratory Technician.	2	61	25	7	20	17	13	185.7%	18	900.0%
51.1009	Phlebotomy Technician/Phlebotomist.	0	0	2	0	0	1	0	--	0	--
51.1012	Sterile Processing Technology/Technician.	0	0	0	0	26	9	26	--	26	--
51.1508	Mental Health Counseling/Counselor.	0	0	0	0	1	0	1	--	1	--
51.2201	Public Health, General.	75	54	57	69	43	56	-26	-37.7%	-32	-42.7%
51.3104	Dietitian Assistant.	22	19	11	3	3	6	0	0.0%	-19	-86.4%
51.3501	Massage Therapy/Therapeutic Massage.	14	15	11	9	11	10	2	22.2%	-3	-21.4%
51.3901	Licensed Practical/Vocational Nurse Training.	28	27	46	17	55	39	38	223.5%	27	96.4%
51.3902	Nursing Assistant/Aide and Patient Care Assistant/Aide. (Includes existing programs in 2020 moved from 51.1620)	2,730	2,878	2,695	3,151	3,390	3,079	239	7.6%	660	24.2%
51.9994	Career Exploration.	405	371	384	485	395	421	-90	-18.6%	-10	-2.5%
51.9996	Certification/Licensure Review.	0	0	0	0	1	0	1	--	1	--
51.9997	Topics.	38	29	23	26	33	27	7	26.9%	-5	-13.2%
51.9998	Internships.	10	9	16	5	9	10	4	80.0%	-1	-10.0%
51.9999	Health Professions and Related Clinical Sciences, Other.	363	415	338	346	319	334	-27	-7.8%	-44	-12.1%
52.0101	Business/Commerce, General.	1,496	1,537	1,820	1,867	2,112	1,933	245	13.1%	616	41.2%
52.0201	Business Administration and Management, General.	151	157	147	196	185	176	-11	-5.6%	34	22.5%
52.0203	Logistics, Materials, and Supply Chain Management	0	0	1	0	0	0	0	--	0	--
52.0301	Accounting.	289	279	312	367	684	454	317	86.4%	395	136.7%
52.0302	Accounting Technology/Technician and Bookkeeping.	723	666	650	915	988	851	73	8.0%	265	36.7%
52.0401	Administrative Assistant and Secretarial Science, General.	1,111	1,398	1,168	1252	1315	1,245	63	5.0%	204	18.4%
52.0407	Business/Office Automation/Technology/Data Entry.	2,525	2,505	2,178	2,444	2,729	2,450	285	11.7%	204	8.1%
52.0408	General Office Occupations and Clerical Services.	2,113	2,070	1,154	1,270	1,307	1,244	37	2.9%	-806	-38.1%
52.0411	Customer Service Support/Call Center/Teleservice Operation.	10	30	49	86	114	83	28	32.6%	104	1040.0%
52.0701	Entrepreneurship/Entrepreneurial Studies.	1,146	1,239	1,622	2,660	3,001	2,428	341	12.8%	1,855	161.9%
52.0703	Small Business Administration/Management.	140	461	479	472	654	535	182	38.6%	514	367.1%
52.0801	Finance, General.	18	18	14	11	61	29	50	454.5%	43	238.9%
52.0803	Banking and Financial Support Services.	126	303	151	299	353	268	54	18.1%	227	180.2%
52.0807	Investments and Securities.	32	34	26	19	16	20	-3	-15.8%	-16	-50.0%
52.0903	Tourism and Travel Services Management.	6	13	11	11	13	12	2	18.2%	7	116.7%
52.0904	Hotel/Motel Administration/Management.	12	13	30	44	42	39	-2	-4.5%	30	250.0%
52.1001	Human Resources Management/Personnel Administration, General.	4	57	76	129	82	96	-47	-36.4%	78	1950.0%
52.1002	Labor and Industrial Relations.	1	0	0	0	0	0	0	--	-1	-100.0%
52.1003	Organizational Behavior Studies.	19	23	23	31	30	28	-1	-3.2%	11	57.9%





Illinois Community College Board  
Table B-13  
STATEWIDE DUAL CREDIT COURSE ENROLLMENT BY 6-DIGIT CIP  
FOR FISCAL YEARS 2019-2023

CIP	COURSE NAME	2019	2020	2021	2022	2023	FY 2021-2023	FY 2022-2023		FY 2019-2023	
							3-Year Average	1-Year Difference	Percent	5-Year Difference	Percent
							Number	Number		Number	Percent
52.1101	International Business/Trade/Commerce.	1	0	0	0	4	1	4	--	3	300.0%
52.1401	Marketing/Marketing Management, General.	547	716	740	777	923	813	146	18.8%	376	68.7%
52.1402	Marketing Research.	18	32	24	269	207	167	-62	-23.0%	189	1050.0%
52.1404	Digital Marketing.	0	0	0	0	2	1	2	--	2	--
52.1803	Retailing and Retail Operations.	0	1	0	0	1	0	1	--	1	--
52.1804	Selling Skills and Sales Operations.	21	46	62	54	62	59	8	14.8%	41	195.2%
52.1902	Fashion Merchandising.	38	47	140	157	157	151	0	0.0%	119	313.2%
52.1905	Tourism and Travel Services Marketing Operations.	0	6	4	10	12	9	2	20.0%	12	--
52.2001	Construction Management, General	0	0	4	4	3	4	-1	-25.0%	3	--
52.9994	Career Exploration.	291	354	218	426	314	319	-112	-26.3%	23	7.9%
52.9997	Topics.	81	60	52	70	0	41	-70	-100.0%	-81	-100.0%
52.9998	Internships.	6	1	33	41	28	34	-13	-31.7%	22	366.7%
52.9999	Business, Management, Marketing, and Related Support Services, Other.	6	4	0	1	11	4	10	1000.0%	5	83.3%
54.0101	History, General.	739	822	938	807	985	910	178	22.1%	246	33.3%
54.0102	American History (United States).	4,002	4,032	4,138	4,384	5,554	4,692	1,170	26.7%	1,552	38.8%
54.0106	Asian History.	69	49	41	121	59	74	-62	-51.2%	-10	-14.5%
54.0196	World History.	1	7	8	3	18	10	15	500.0%	17	1700.0%
54.9996	Certification/Licensure Review.	<u>45</u>	<u>15</u>	<u>24</u>	<u>48</u>	<u>200</u>	<u>91</u>	<u>152</u>	<u>316.7%</u>	<u>155</u>	<u>344.4%</u>
	TOTALS	124,614	133,394	130,943	146,391	163,283	146,872	16,892	11.5%	38,669	31.0%
	Pure										
	Minimum	0	0	0	0	0	0	-821	-100.0%	-806	-100.0%
	Maximum	19,798	20,961	21,259	22,122	26,363	23,248	4,241	11828.6%	6,565	7600.0%
	Median	24	26	27	32	37	35	3	7.4%	6	22.5%
	Standard Deviation	1,198	1,270	1,290	1,366	1,582	1,410	252	679.7%	425	743.1%
	Average	304	325	319	357	398	358	41	79.2%	94	169.9%

Includes only Transfer courses and Career and Technical Education courses  
SOURCE OF DATA: ICCB Centralized Data System--Annual Course (AC) Data



Illinois Community College Board  
Table B-14  
STATEWIDE DUAL CREDIT COURSE ENROLLMENT BY 2-DIGIT CIP  
FOR FISCAL YEARS 2019-2023

CIP	COURSE NAME						FY 2021-2023 3-Year Average	FY 2022-2023		FY 2019-2023	
		<u>2019</u>	<u>2020</u>	<u>2021</u>	<u>2022</u>	<u>2023</u>	<u>Number</u>	<u>Number</u>	<u>Percent</u>	<u>Number</u>	<u>Percent</u>
01.	Agriculture, Agriculture Operations, and Related Sciences	1,693	1,932	2,031	2,348	2,686	2,355	338	14.4%	993	58.7%
03.	Natural Resources and Conservation	52	8	13	0	0	4	0	--	-52	-100.0%
04.	Architecture and Related Services	5	4	3	23	21	16	-2	-8.7%	16	320.0%
05.	Area, Ethnic, Cultural, Gender, and Group Studies	178	157	238	268	403	303	135	50.4%	225	126.4%
09.	Communication, Journalism and Related Programs	619	600	642	655	739	679	84	12.8%	120	19.4%
10.	Communications, Technologies/Technicians and Support Services	1,298	1,014	732	818	848	799	30	3.7%	-450	-34.7%
11.	Computer and Information Sciences and Support Services	6,319	6,885	5,447	6,382	6,252	6,027	-130	-2.0%	-67	-1.1%
12.	Personal and Culinary Services	3,230	3,897	3,351	4,027	5,329	4,236	1,302	32.3%	2,099	65.0%
13.	Education	1,024	1,172	1,456	1,745	2,140	1,780	395	22.6%	1,116	109.0%
14.	Engineering	28	52	74	173	78	108	-95	-54.9%	50	178.6%
15.	Engineering Technologies and Engineering-Related Fields	5,024	5,845	5,016	5,745	6,627	5,796	882	15.4%	1,603	31.9%
16.	Foreign Languages, Literatures, and Linguistics	6,211	5,978	6,075	7,776	8,186	7,346	410	5.3%	1,975	31.8%
19.	Family and Consumer Sciences/Human Sciences	2,609	2,707	2,495	3,238	3,098	2,944	-140	-4.3%	489	18.7%
22.	Legal Professions and Studies	3	1	3	0	1	1	1	--	-2	-66.7%
23.	English Language and Literature/Letters	25,582	27,402	28,423	29,329	34,038	30,597	4,709	16.1%	8,456	33.1%
24.	Liberal Arts and Sciences, General Studies and Humanities	2,730	2,788	2,862	2,851	2,750	2,821	-101	-3.5%	20	0.7%
26.	Biological and Biomedical Sciences	4,711	5,035	5,241	5,785	5,758	5,595	-27	-0.5%	1,047	22.2%
27.	Mathematics and Statistics	11,567	12,882	13,840	14,208	15,489	14,512	1,281	9.0%	3,922	33.9%
30.	Multi/Interdisciplinary Studies	101	72	109	84	43	79	-41	-48.8%	-58	-57.4%
31.	Parks, Recreation, Leisure and Fitness Studies	2,212	2,159	3,059	3,765	4,879	3,901	1,114	29.6%	2,667	120.6%
32.	Basic Skills and Developmental/Remedial Education	68	127	112	215	275	201	60	27.9%	207	304.4%
36.	Leisure and Recreational Activities	16	17	12	16	18	15	2	12.5%	2	12.5%
38.	Philosophy and Religious Studies	981	1,021	720	808	843	790	35	4.3%	-138	-14.1%
40.	Physical Sciences	2,233	2,196	2,282	2,401	2,526	2,403	125	5.2%	293	13.1%
42.	Psychology	4,112	4,170	4,226	4,512	5,030	4,589	518	11.5%	918	22.3%
43.	Homeland Security, Law Enforcement, Firefighting and Related Protective Services	2,955	2,963	2,736	2,950	3,065	2,917	115	3.9%	110	3.7%
44.	Public Administration and Social Services Professions	55	66	54	107	151	104	44	41.1%	96	174.5%
45.	Social Sciences	3,783	3,886	3,918	4,112	4,624	4,218	512	12.5%	841	22.2%
46.	Construction Trades	683	710	773	1,205	1,050	1,009	-155	-12.9%	367	53.7%
47.	Mechanics and Repair Technologies/Technicians	2,616	2,901	2,298	3,040	3,586	2,975	546	18.0%	970	37.1%
48.	Precision Production	3,791	4,194	3,246	4,191	5,348	4,262	1,157	27.6%	1,557	41.1%
49.	Transportation and Materials Moving	8	12	10	9	64	28	55	611.1%	56	700.0%
50.	Visual and Performing Arts	4,208	4,425	4,190	4,469	5,022	4,560	553	12.4%	814	19.3%
51.	Health Professions and Related Programs	8,122	9,121	8,919	9,891	10,090	9,633	199	2.0%	1,968	24.2%
52.	Business Management, Marketing, and Related Supportive Services	10,931	12,070	11,188	13,882	15,410	13,493	1,528	11.0%	4,479	41.0%
54.	History	<u>4,856</u>	<u>4,925</u>	<u>5,149</u>	<u>5,363</u>	<u>6,816</u>	<u>5,776</u>	<u>1,453</u>	<u>27.1%</u>	<u>1,960</u>	<u>40.4%</u>
TOTALS		124,614	133,394	130,943	146,391	163,283	146,872	16,892	11.5%	38,669	31.0%
Pure											
Minimum		3	1	3	0	0	1	-155	-54.9%	-450	-100.0%
Maximum		25,582	27,402	28,423	29,329	34,038	30,597	4,709	611.1%	8,456	700.0%
Median		2,421	2,452	2,397	2,901	2,908	2,869	120	11.9%	428	31.9%
Standard Deviation		4,819	5,218	5,335	5,640	6,415	5,790	881	105.3%	1,697	138.7%
Average		3,462	3,705	3,637	4,066	4,536	4,080	469	26.6%	1,074	66.8%

Includes only Transfer courses and Career and Technical Education courses  
SOURCE OF DATA: ICCB Centralized Data System--Annual Course (AC) Data



Illinois Community College Board  
Table B-15  
STATEWIDE DUAL CREDIT COURSE ENROLLMENT BY CAREER CLUSTER  
FOR FISCAL YEARS 2019-2023

Career Clusters Code Title	2019*	2020*	2021*	2022	2023	FY 2021-2023 3-Year Average	FY 2022-2023 1-Year Difference		FY 2019-2023 5-Year Difference	
						Number	Number	Percent	Number	Percent
01 Agriculture, Food & Natural Resources	1,630	1,889	1,966	2,285	2,592	2,281	307	13.4%	962	59.0%
02 Architecture & Construction	3,664	1,025	1,184	1,677	1,637	1,499	-40	-2.4%	-2,027	-55.3%
03 Arts, Audio/Video Technology & Communications	30,618	6,040	5,559	5,905	6,567	6,010	662	11.2%	-24,051	-78.6%
04 Business Management & Administration	9,745	13,432	12,327	13,906	15,200	13,811	1,294	9.3%	5,455	56.0%
05 Education & Training	14,722	3,232	4,531	5,581	7,143	5,752	1,562	28.0%	-7,579	-51.5%
06 Finance	176	1,300	1,153	1,611	2,102	1,622	491	30.5%	1,926	1094.3%
07 Government & Public Administration	1,216	1,307	1,552	1,559	1,692	1,601	133	8.5%	476	39.1%
08 Health Science	11,556	5,873	5,617	6,719	6,775	6,370	56	0.8%	-4,781	-41.4%
09 Hospitality & Tourism	2,213	2,891	2,558	2,965	3,622	3,048	657	22.2%	1,409	63.7%
10 Human Services	4,828	7,891	7,505	8,817	9,922	8,748	1,105	12.5%	5,094	105.5%
11 Information Technology	6,180	6,635	5,235	6,114	5,969	5,773	-145	-2.4%	-211	-3.4%
12 Law, Public Safety, Corrections & Security	2,831	2,964	2,739	2,950	3,066	2,918	116	3.9%	235	8.3%
13 Manufacturing	5,989	10,015	8,001	9,886	11,667	9,851	1,781	18.0%	5,678	94.8%
14 Marketing	624	852	1,277	1,805	1,716	1,599	-89	-4.9%	1,092	175.0%
15 Science, Technology, Engineering & Mathematics	24,941	23,273	24,472	25,721	27,432	25,875	1,711	6.7%	2,491	10.0%
16 Transportation, Distribution & Logistics	1,933	2,271	1,899	2,434	3,092	2,475	658	27.0%	1,159	60.0%
17 Other/Transfer	1,748	42,504	43,368	46,456	53,089	47,638	6,633	14.3%	51,341	2937.1%
TOTALS	124,614	133,394	130,943	146,391	163,283	146,872	16,892	11.5%	38,669	31.0%
Pure										
Minimum	176	852	1,153	1,559	1,637	1,499	-145	-4.9%	-24,051	-78.6%
Maximum	30,618	42,504	43,368	46,456	53,089	47,638	6,633	30.5%	51,341	2937.1%
Median	3,664	3,232	4,531	5,581	5,969	5,752	657	11.2%	1,092	56.0%
Standard Deviation	8,754.9	10,609.5	10,845.6	11,500.7	12,979.9	11,770.0	1,588.0	10.9%	14,392.8	738.6%
Average	7,330	7,847	7,703	8,611	9,605	8,640	994	11.6%	2,275	263.1%

\*The CIP cluster crosswalk was updated in FY 2019, FY 2020, and FY 2021.  
Includes only Transfer courses and Career and Technical Education courses  
The Career Cluster brand is a registered trademark of Advance CTE  
SOURCE OF DATA: ICCB Centralized Data System--Annual Course (AC) Data

Illinois Community College Board  
Table B-16  
DUAL CREDIT COURSE ENROLLMENT BY INSTRUCTIONAL SITE AND BY COLLEGE  
FISCAL YEAR 2023



Dist. <u>No. District/College</u>	Main College <u>Campus</u>	High School <u>Campus</u>	Off-Campus College <u>Facility</u>	Online/ Internet	Distance Learning	Other/ Unknown <u>Location</u>	<u>Total</u>
503 Black Hawk	47	3,030	110	250	0	30	3,467
518 Carl Sandburg	165	905	121	1,003	0	0	2,194
508 City Colleges of Chicago	(35)	(0)	(9,722)	(0)	(0)	(1,426)	(11,183)
02 Harold Washington	31	0	1,611	0	0	634	2,276
04 Harry S Truman	0	0	249	0	0	613	862
01 Kennedy-King	2	0	1,039	0	0	45	1,086
03 Malcolm X	0	0	1,081	0	0	41	1,122
05 Olive-Harvey	2	0	998	0	0	50	1,050
06 Richard J. Daley	0	0	2,566	0	0	31	2,597
07 Wilbur Wright	0	0	2,178	0	0	12	2,190
502 College of DuPage	0	8,054	2,682	0	0	256	10,992
532 College of Lake County	53	3,792	83	44	0	515	4,487
507 Danville Area	1,273	692	0	664	0	0	2,629
509 Elgin	1,890	1,928	0	746	0	168	4,732
512 Harper	168	8,149	0	65	0	0	8,382
540 Heartland	205	3,476	6	541	75	0	4,303
519 Highland	163	1,146	0	3	0	202	1,514
514 Illinois Central	382	3,858	0	760	0	787	5,787
529 Illinois Eastern	(741)	(2,678)	(164)	(471)	(0)	(106)	(4,160)
04 Frontier	96	1,084	17	113	0	78	1,388
01 Lincoln Trail	281	383	132	152	0	0	948
02 Olney Central	224	752	15	54	0	0	1,045
03 Wabash Valley	140	459	0	152	0	28	779
513 Illinois Valley	0	1,509	0	81	0	0	1,590
530 John A. Logan	102	2,089	189	62	0	0	2,442
539 John Wood	22	531	0	181	0	0	734
525 Joliet Junior	0	8,089	0	0	0	0	8,089
520 Kankakee	7	0	0	0	0	1,003	1,010
501 Kaskaskia	0	6,380	79	0	0	0	6,459
523 Kishwaukee	417	974	6	105	0	0	1,502
517 Lake Land	101	3,338	0	262	0	0	3,701
536 Lewis and Clark	0	4,158	0	0	0	0	4,158
526 Lincoln Land	12	2,827	0	18	0	468	3,325
528 McHenry County	0	11,757	0	0	0	238	11,995
524 Moraine Valley	0	5,780	0	0	0	0	5,780
527 Morton	0	1,573	0	0	0	0	1,573
535 Oakton	0	4,419	0	0	0	0	4,419
505 Parkland	379	1,612	245	365	0	6	2,607
515 Prairie State	0	635	0	0	0	0	635
521 Rend Lake	192	1,686	206	21	119	5	2,229
537 Richland	775	1,210	0	368	0	0	2,353
511 Rock Valley	1,811	400	50	245	0	0	2,506
506 Sauk Valley	320	1,137	0	151	0	0	1,608
531 Shawnee	137	1,281	31	18	0	0	1,467
510 South Suburban	0	4,352	0	0	0	0	4,352
533 Southeastern Illinois	126	1,432	0	339	0	55	1,952
522 Southwestern Illinois	1,873	7,685	52	358	41	0	10,009
534 Spoon River	86	496	103	372	11	143	1,211
504 Triton	0	0	0	0	0	4,284	4,284
516 Waubensee	290	5,029	1,952	190	0	2	7,463
TOTALS	11,772	118,087	15,801	7,683	246	9,694	163,283

SOURCE OF DATA: ICCB Centralized Data System--Annual Course (AC) Data