



ILLINOIS COMMUNITY COLLEGE ANNUAL ENROLLMENT AND COMPLETIONS

March 15, 2019 Board Meeting

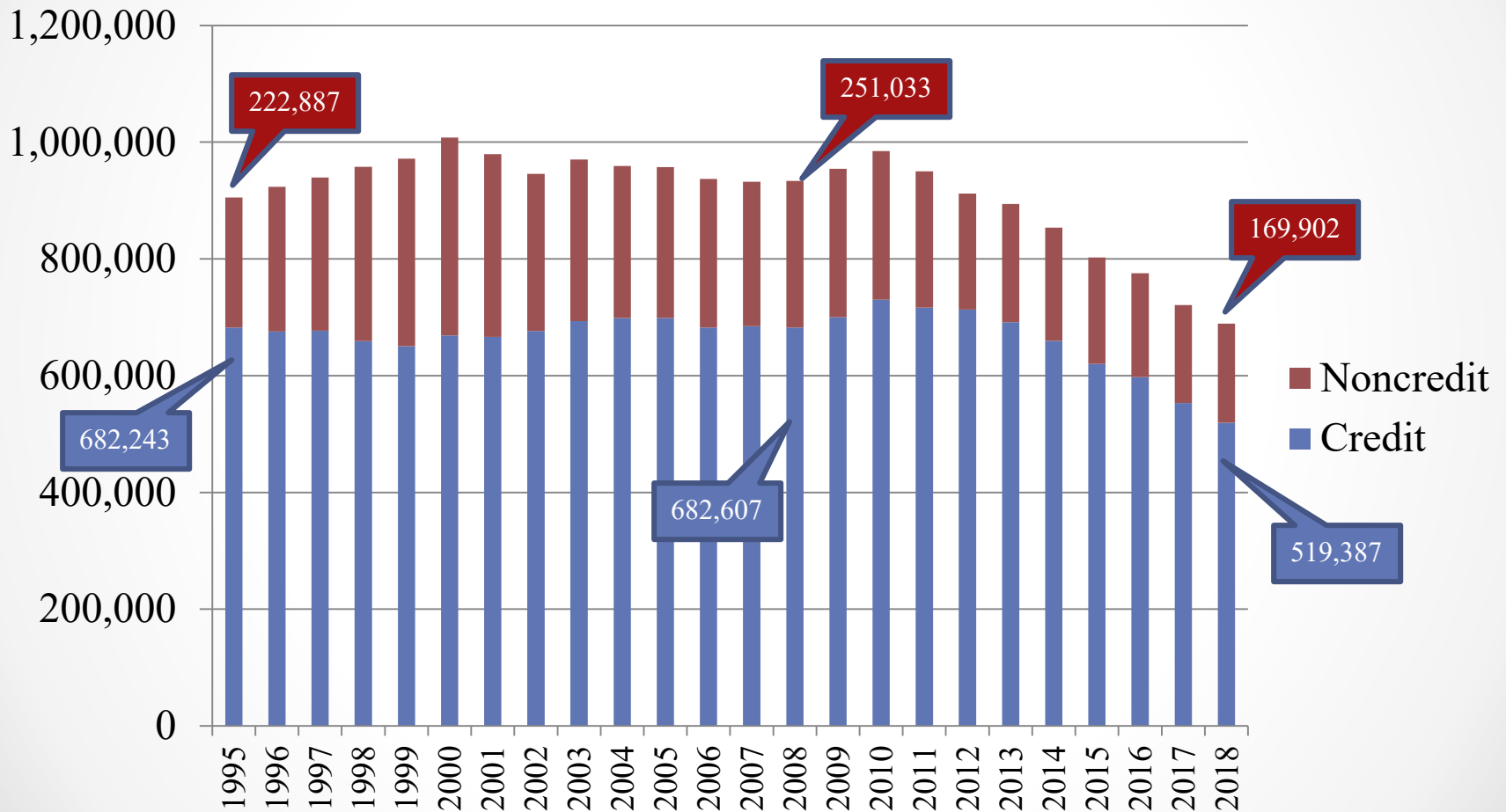
Nathan Wilson

ICCB Deputy Director for Academic Affairs and Institutional Effectiveness

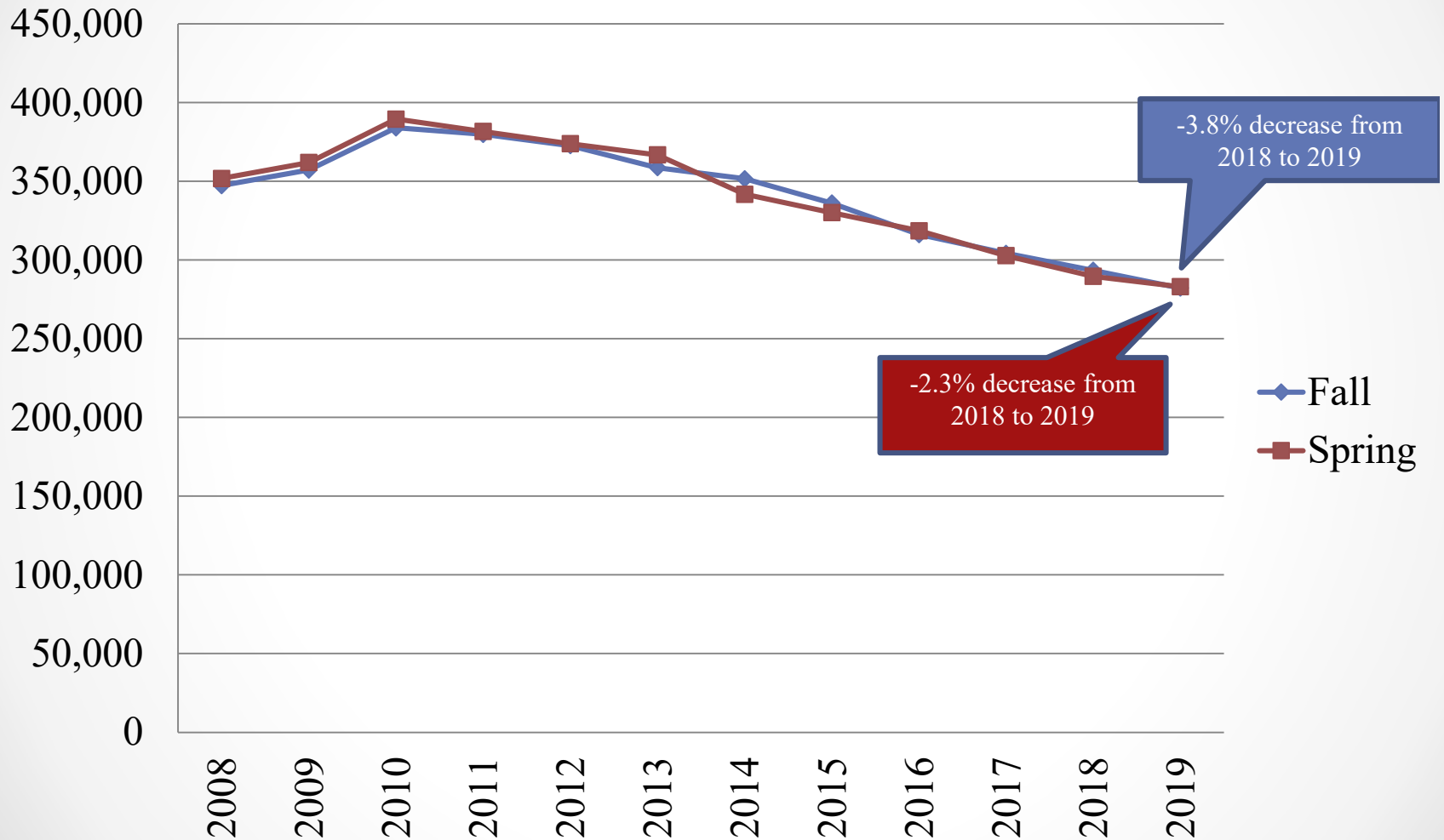
TOPICS OVERVIEW

- Illinois Community College Overall Enrollment Trends
- State Budget and Economy Impact
- Demographic Trends in Illinois Community Colleges
- Illinois High School Graduate College-Going Trends
- Peer State Comparison
- Illinois Higher Education Sector Analysis
- Success in Community Colleges

ILLINOIS COMMUNITY COLLEGES TOTAL STUDENTS SERVED THROUGH CREDIT AND NONCREDIT COURSEWORK

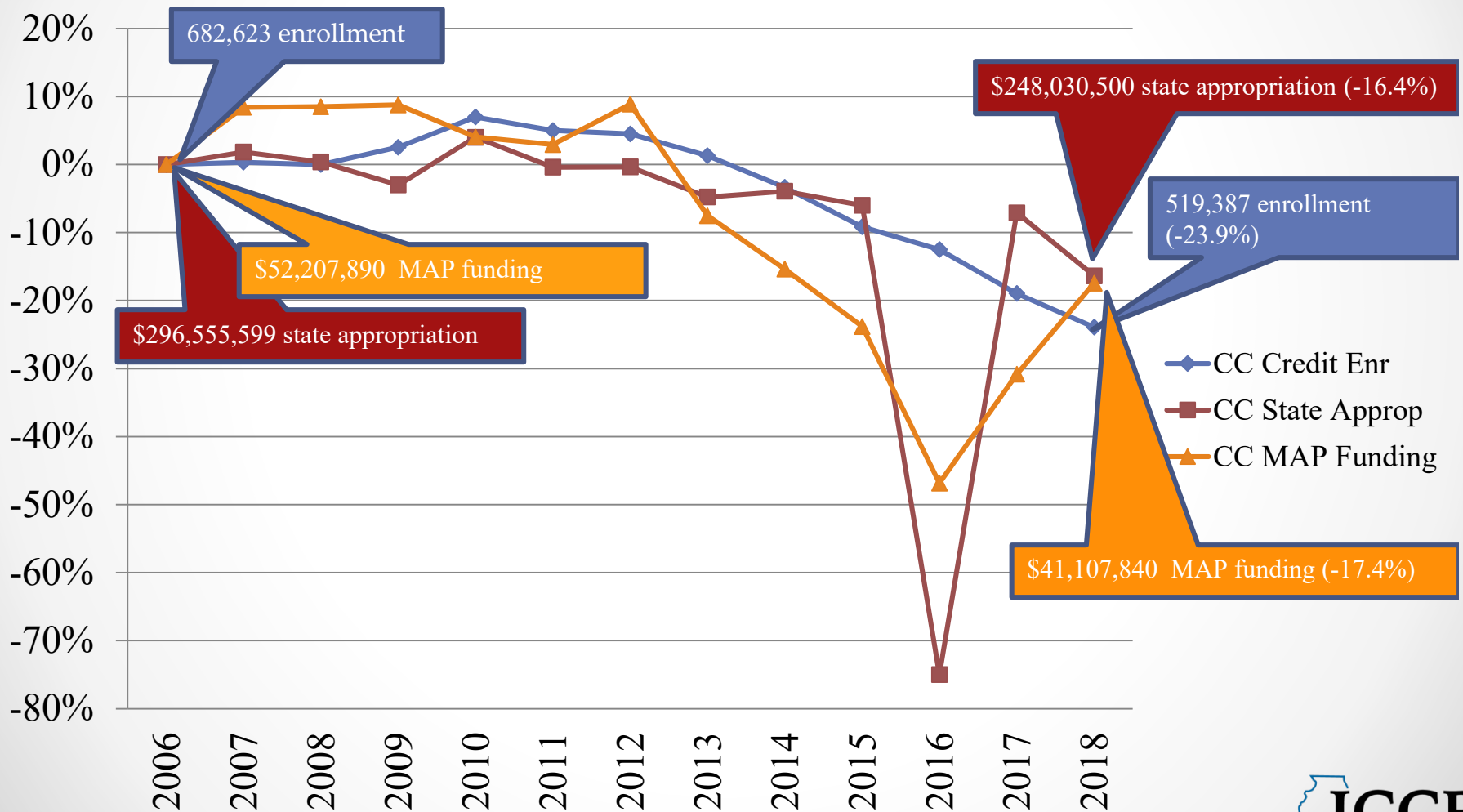


ILLINOIS COMMUNITY COLLEGES TOTAL STUDENTS FALL AND SPRING TERMS*

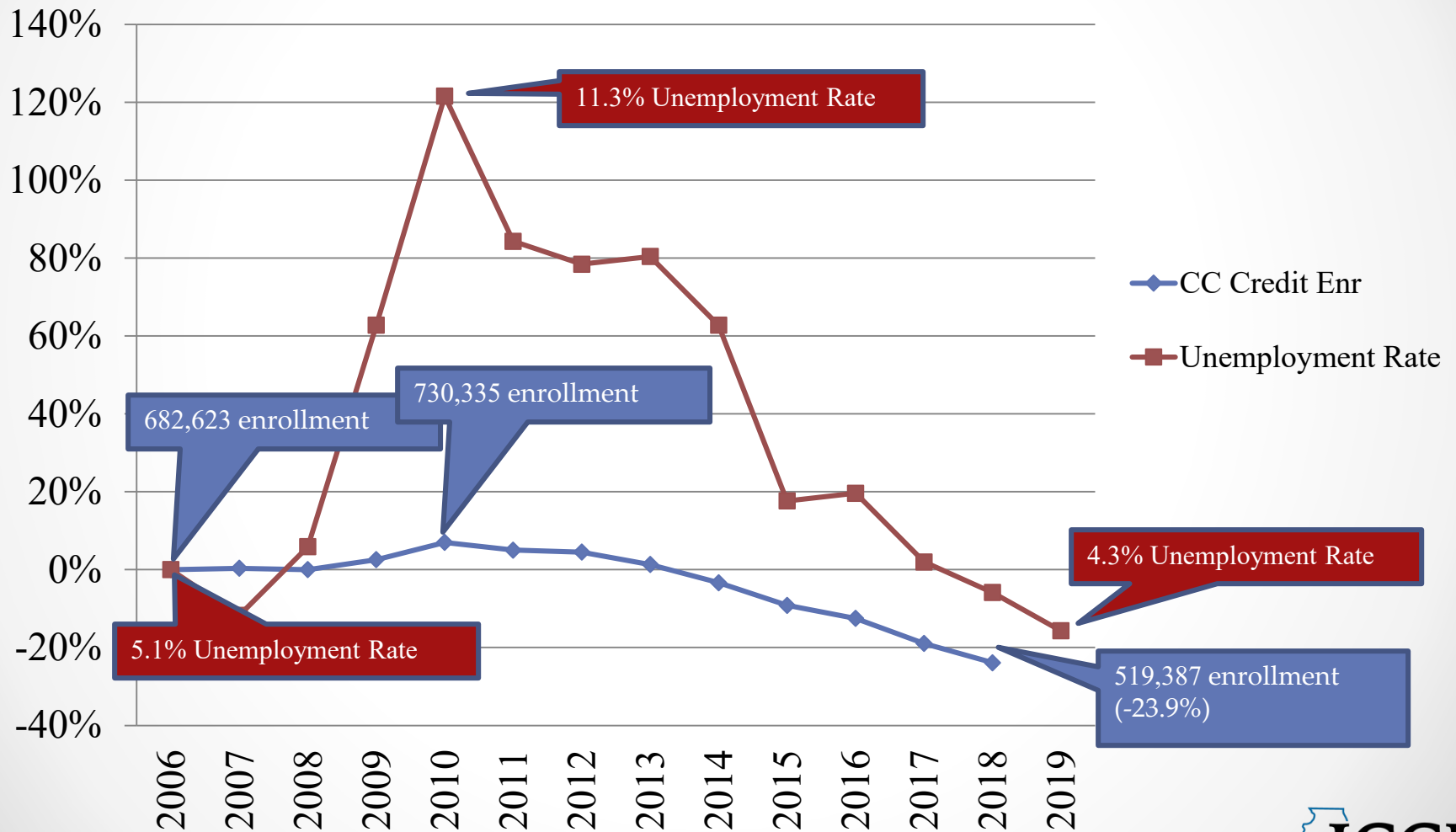


* 2019 data are preliminary and derive from ICCB survey results.

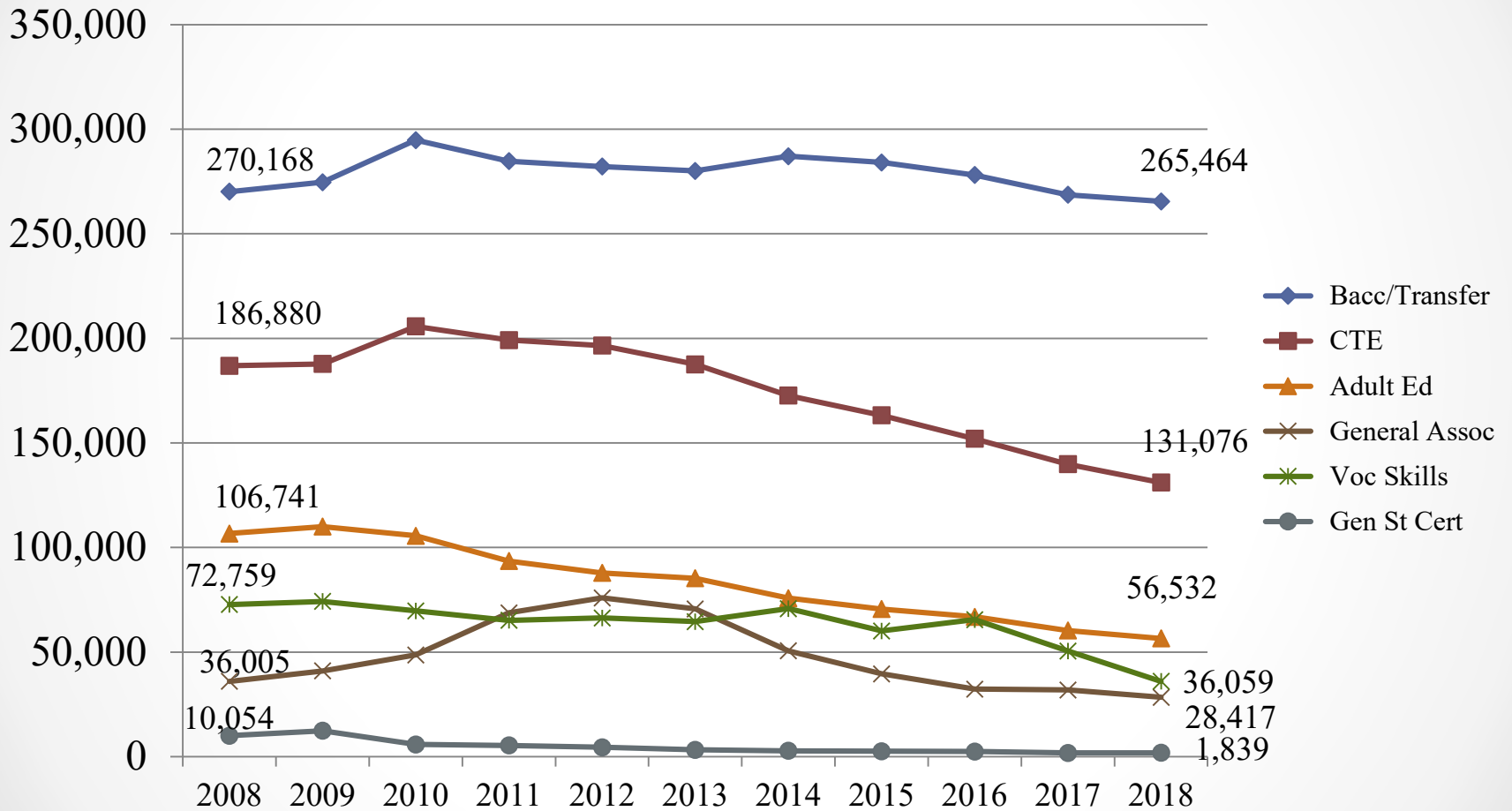
TRENDS FOR IL COMMUNITY COLLEGE ENROLLMENT / STATE APPROPRIATION / MAP FUNDING



IL COMMUNITY COLLEGE ENROLLMENT AND UNEMPLOYMENT RATE

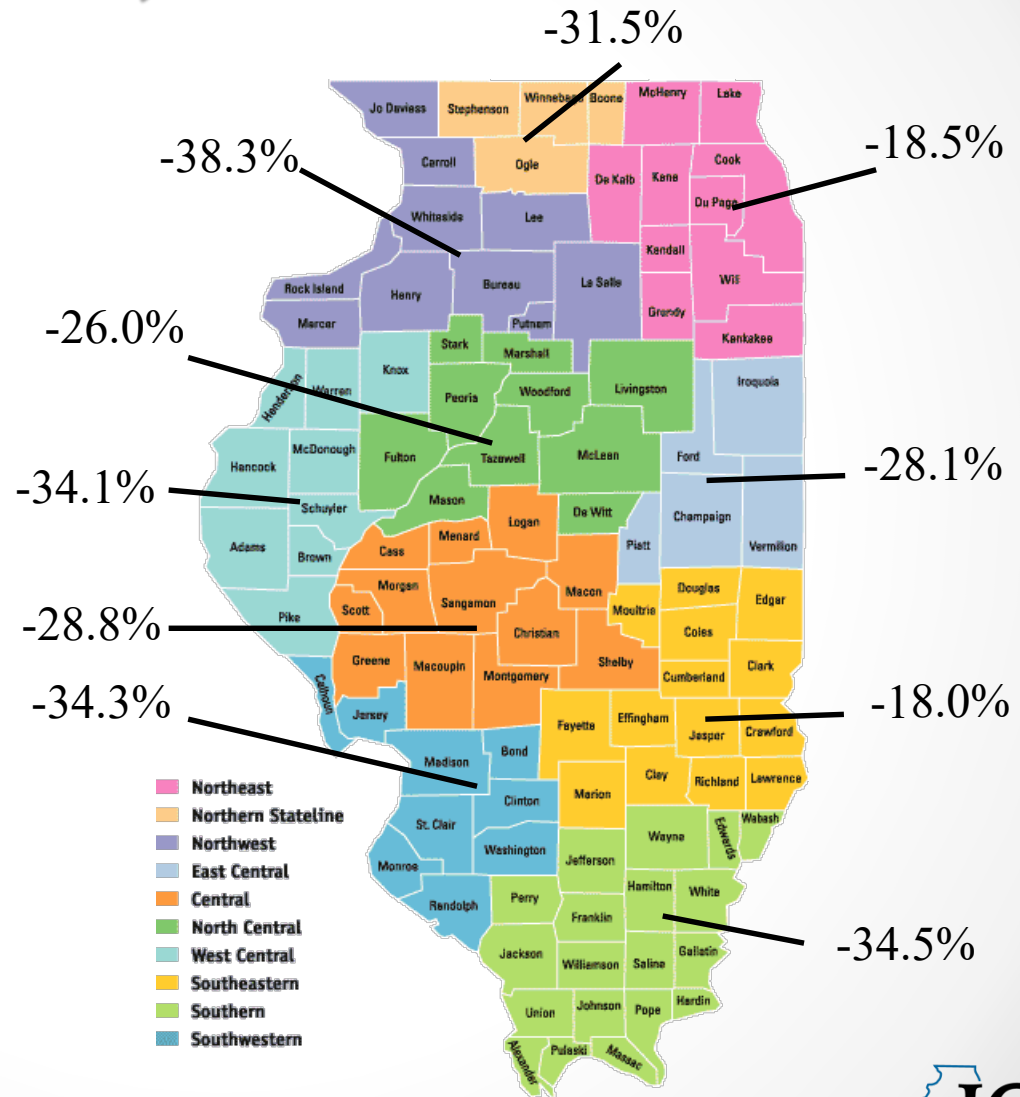


ANNUAL STUDENT ENROLLMENTS BY INSTRUCTIONAL PROGRAM AREA IN ILLINOIS COMMUNITY COLLEGES



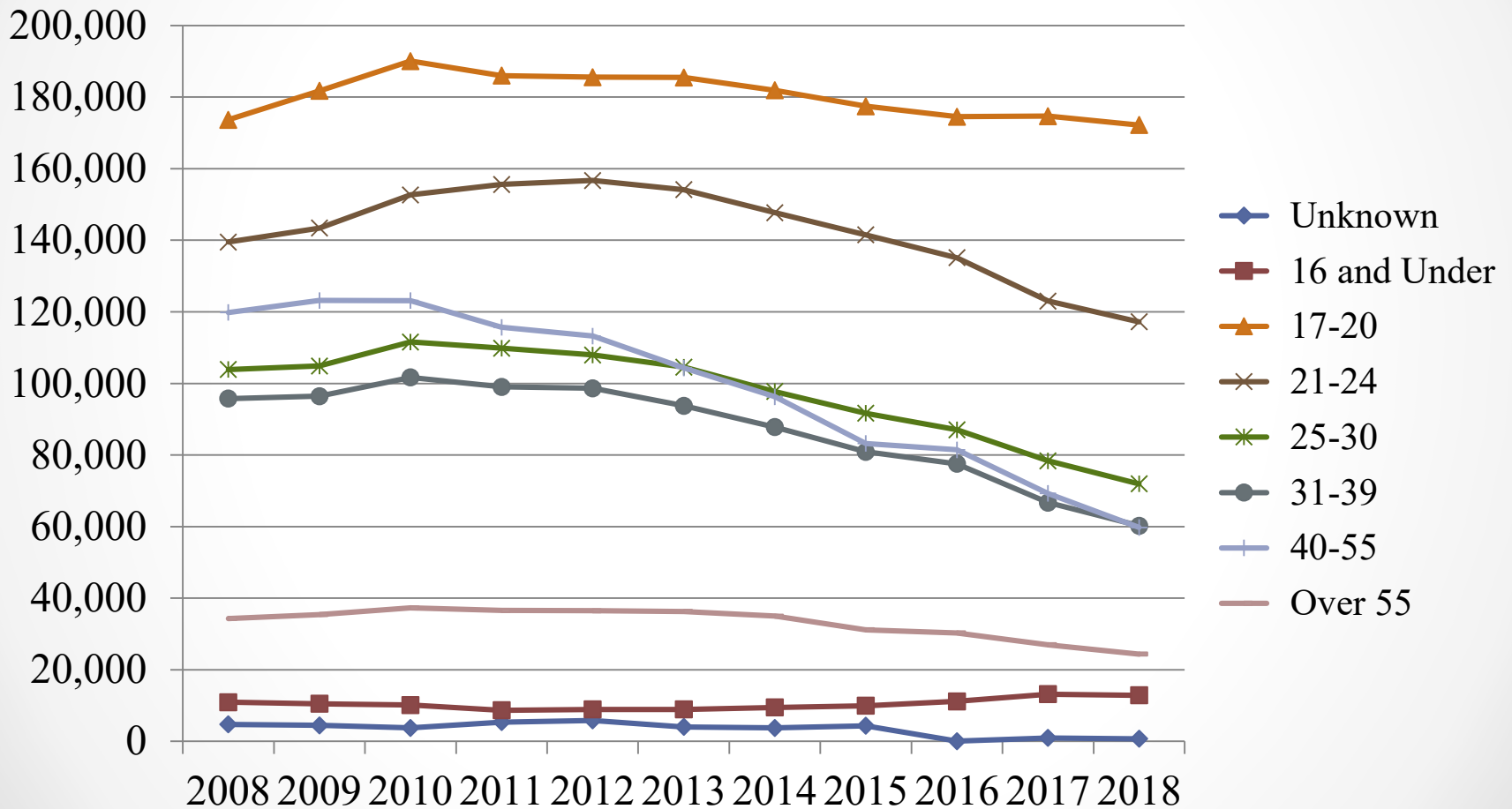
COMMUNITY COLLEGE ENROLLMENT BY ECONOMIC DEVELOPMENT REGION, 2008 TO 2018 % CHANGE

- **Northeast** - CCC Daley, CCC Kennedy-King, CCC Malcolm X, CCC Olive-Harvey, CCC Truman, CCC Washington, CCC Wilbur-Wright, DuPage, Elgin, Harper, Joliet, Kishwaukee, Lake County, McHenry, Moraine Valley, Morton, Oakton, Prairie State, South Suburban, Triton, Waubonsee
- **Northern Stateline** - Rock Valley
- **Northwest** - Black Hawk, Highland, Illinois Valley, Sauk Valley
- **East Central** - Danville, Kankakee, Parkland
- **Central** - Lincoln Land, Richland
- **North Central** - Heartland, Illinois Central, Spoon River
- **West Central** - Sandburg, Wood
- **Southeastern** - IECC Lincoln Trail, IECC Olney Central, Lake Land
- **Southern** - IECC Frontier, IECC Wabash Valley, Logan, Rend Lake, Shawnee, Southeastern
- **Southwestern** - Kaskaskia, Lewis & Clark, SWIC

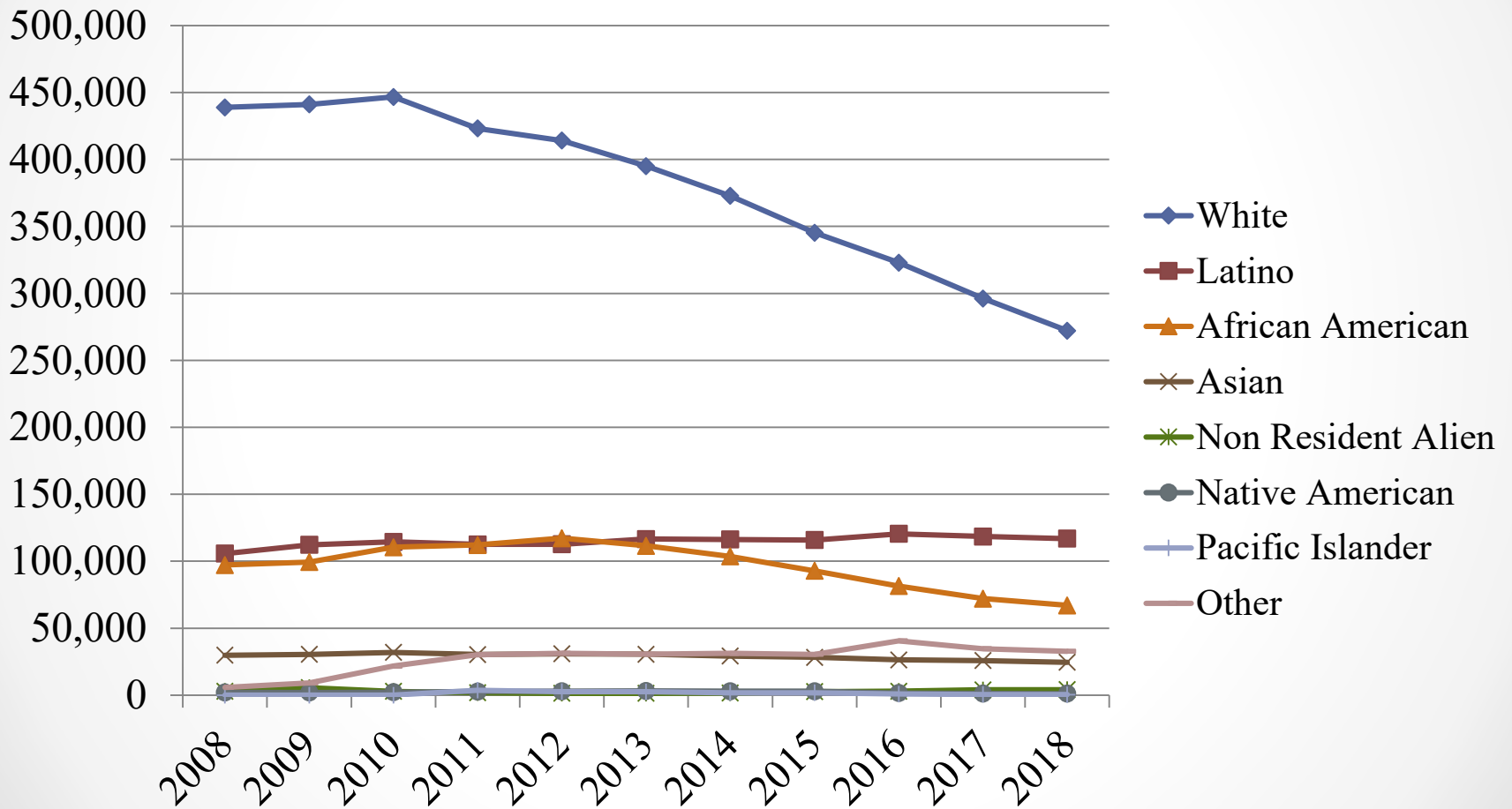


Note – Overlap across Economic Development Regions may occur for some community colleges.

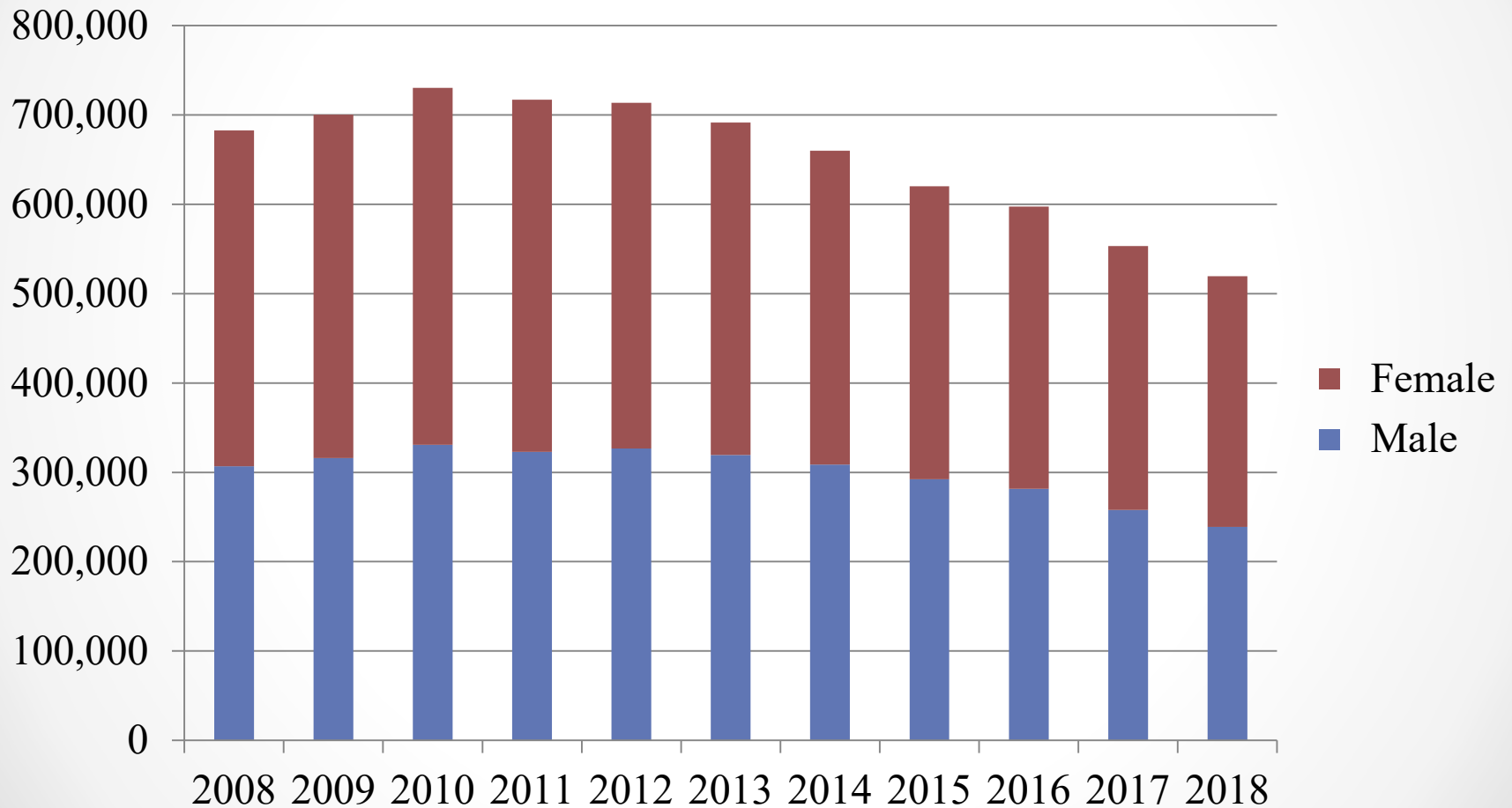
ANNUAL STUDENT ENROLLMENTS BY AGE IN ILLINOIS COMMUNITY COLLEGES



ANNUAL STUDENT ENROLLMENTS BY RACE/ETHNICITY IN ILLINOIS COMMUNITY COLLEGES



ANNUAL STUDENT ENROLLMENTS BY GENDER IN ILLINOIS COMMUNITY COLLEGES



IL PUBLIC HS GRADUATES INITIAL NATIONAL COLLEGE ENROLLMENT

Sector	2014		2015		2016		2017	
	Number	% of Total	Number	% of Total	Number	% of Total	Number	% of Total
4-year	52,307	37.6%	49,611	36.1%	51,035	37.1%	53,068	39.6%
2-year	35,922	25.8%	39,419	28.7%	37,523	27.3%	44,289	33.0%
Less than 2-year	97	0.1%	72	0.1%	41	0.0%	0	0.0%
Total Enrolled	88,326	63.5%	89,102	64.9%	88,599	64.4%	97,357	72.6%
Not Yet Enrolled	50,730	36.5%	48,188	35.1%	48,985	35.6%	36,803	27.4%
Total	139,056	100.0%	137,290	100.0%	137,584	100.0%	134,160	100.0%

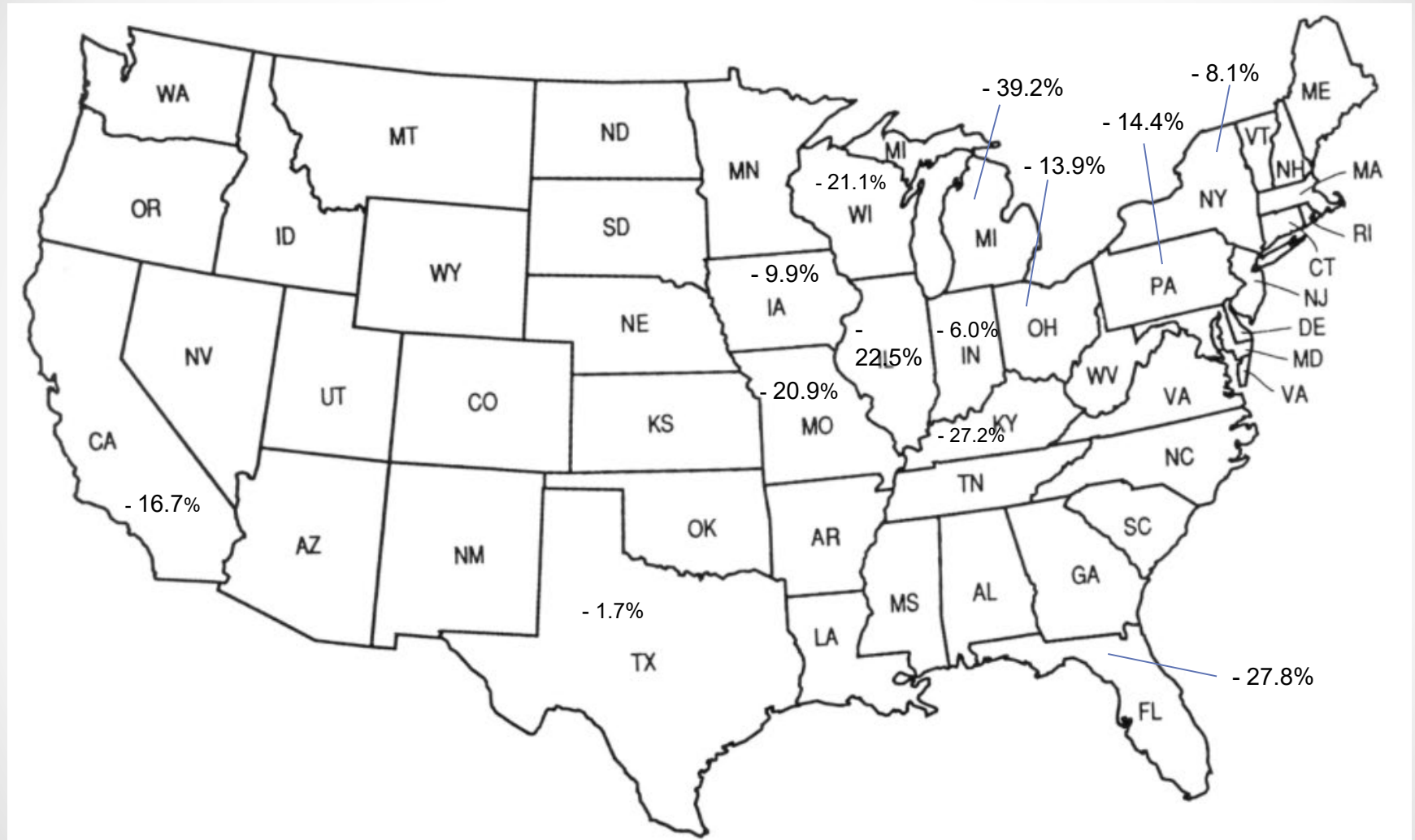
47% enroll out-of-state

4% enroll out-of-state

Data Source – Illinois State Board of Education and the National Student Clearinghouse Student Tracker.

Reference – Illinois Board of Higher Education. (February 2019). Outmigration Context: College Enrollment Patterns of Recent Illinois Public High School Graduates (IBHE Data Points 20189-2). Springfield, IL.

BORDER & PEER STATE ENROLLMENT FOR COMMUNITY COLLEGE SECTOR, 2012 TO 2017 % CHANGE



Source – Digest of Education Statistics and IPEDS Data Center

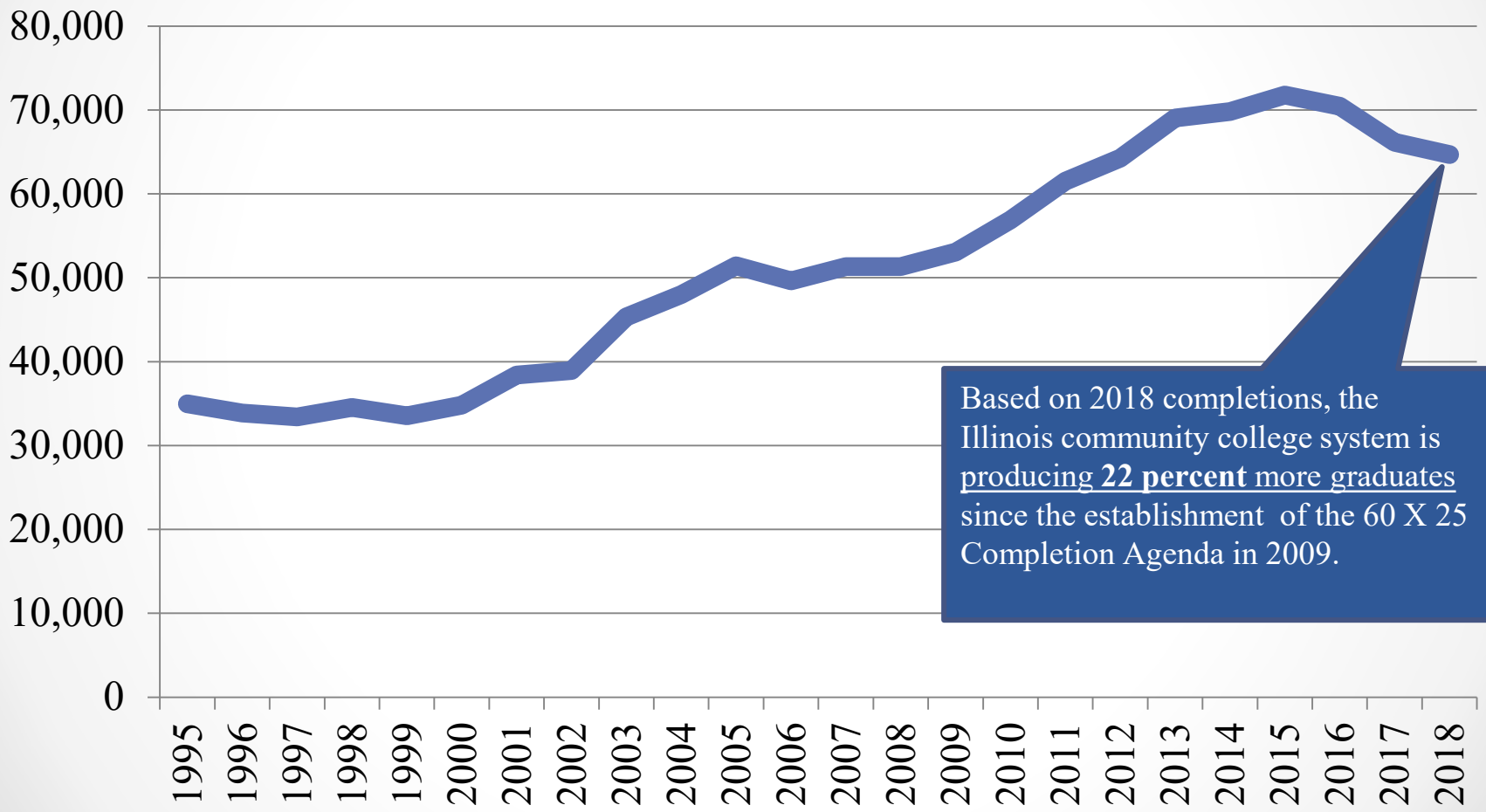
ILLINOIS HIGHER EDUCATION ENROLLMENT BY SECTOR

IL Public Uni. Total	IL Public Uni. Total	IL Public Uni. %	IL Comm. Coll. Total	IL Comm. Coll. %	IL Ind. NFP Inst. Total	IL Ind. NFP Inst. %	IL Ind. FP Inst. Total	IL Ind. FP Inst. %	Out-of-State Inst. Total	Out-of-State Inst. %	IL All Inst. Total	IL All Inst. %
Fall 2017	183,833	25.3%	265,960	36.6%	209,197	28.8%	60,558	8.3%	7,890	1.1%	727,438	100%
Fall 2007	202,493	24.7%	347,277	42.3%	218,451	26.6%	39,555	4.8%	13,250	1.6%	821,026	100%
Fall 1997	192,022	26.3%	344,556	47.3%	175,384	24.1%	14,495	2.0%	2,320	0.3%	728,777	100%

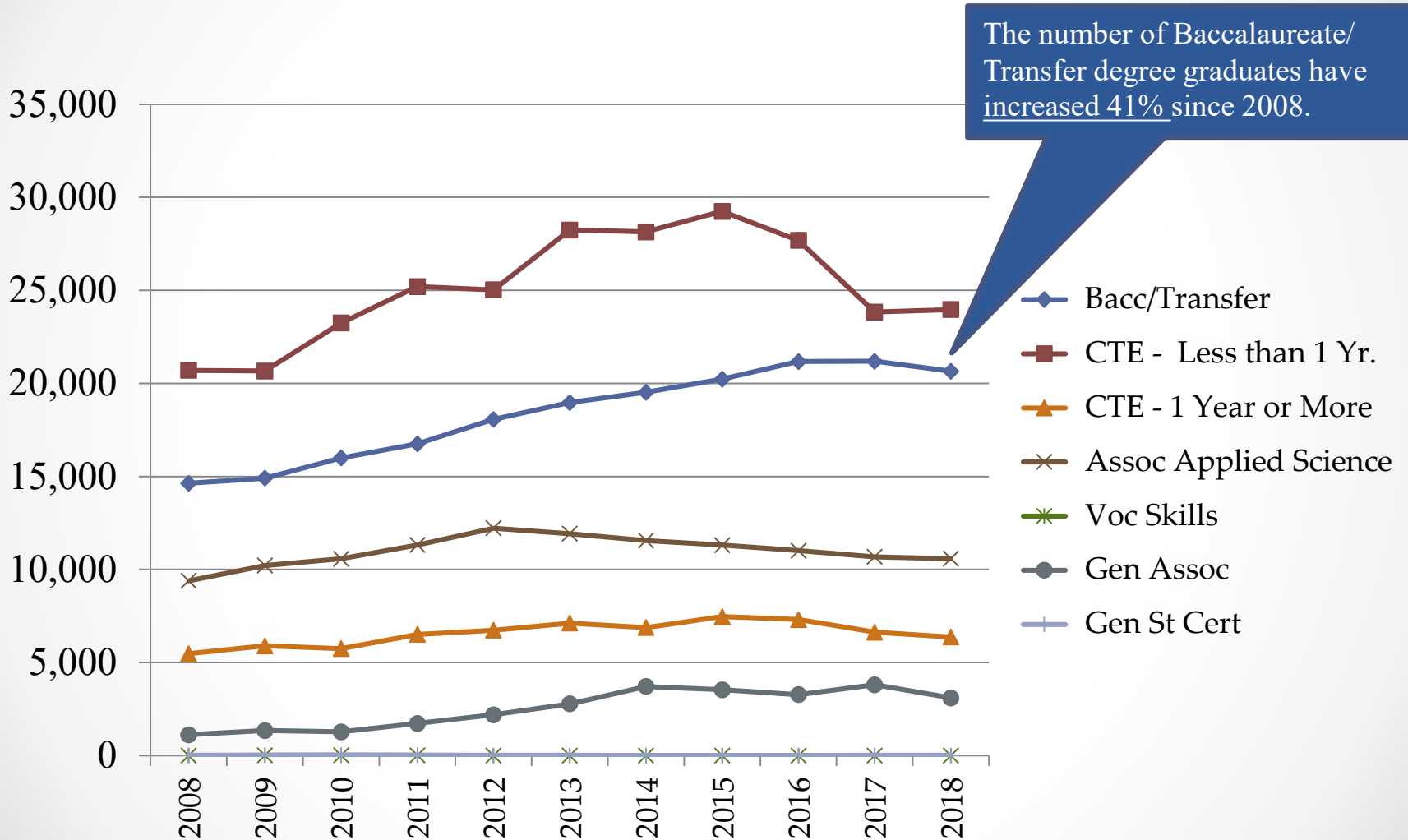
Illinois Higher Education

- CC sector still includes the most students but its “market share” has decreased 5.7% since Fall 2007 and 10.7% since Fall 1997.
- The fastest growing sector is Independent For-Profit with growth of almost 46,000 students annually in Fall 2017 compared to Fall 1997.
- Public 4-year public university student population has remained fairly stable as a sector proportion.

ILLINOIS COMMUNITY COLLEGES ANNUAL GRADUATES FISCAL YEARS 1995-2018

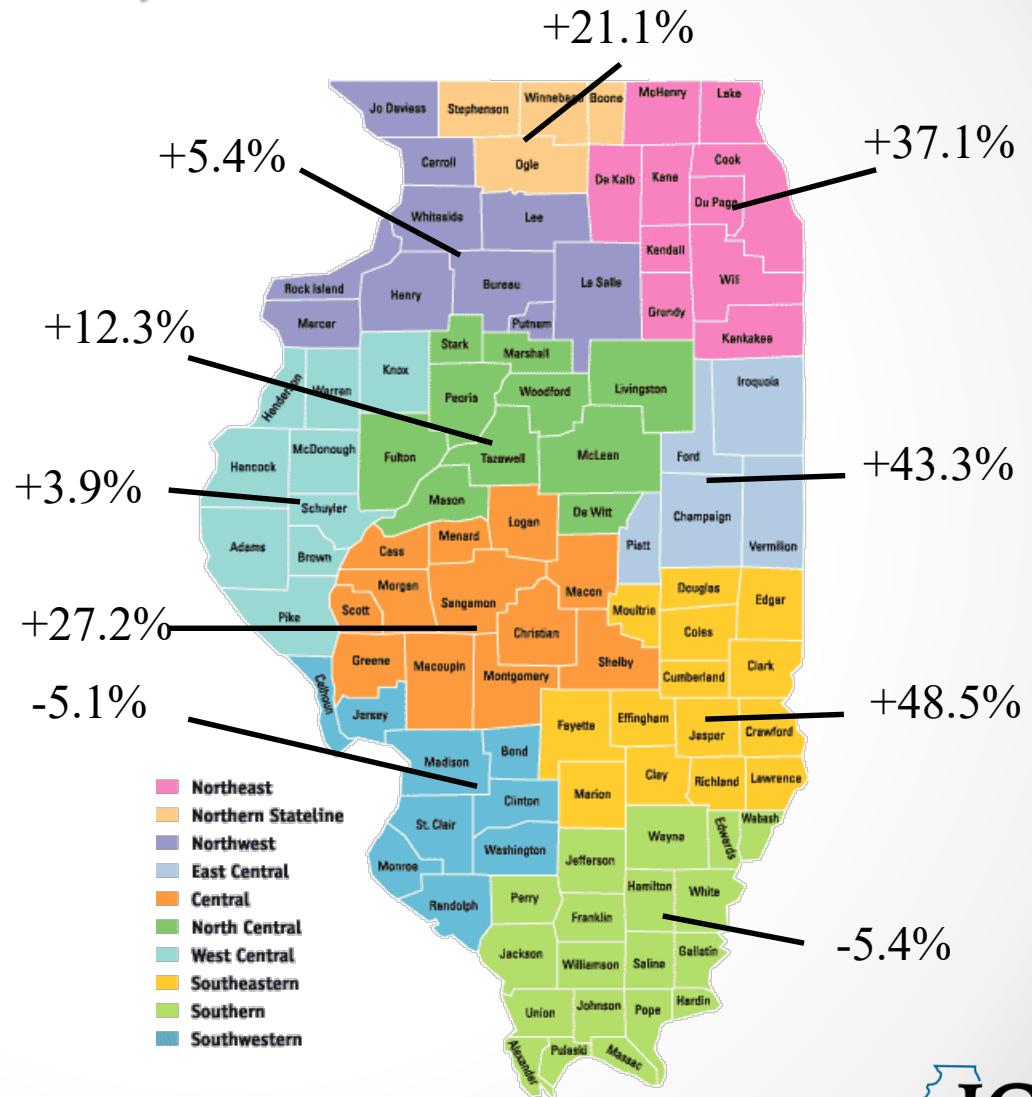


ANNUAL STUDENT GRADUATES BY INSTRUCTIONAL PROGRAM AREA IN ILLINOIS COMMUNITY COLLEGES



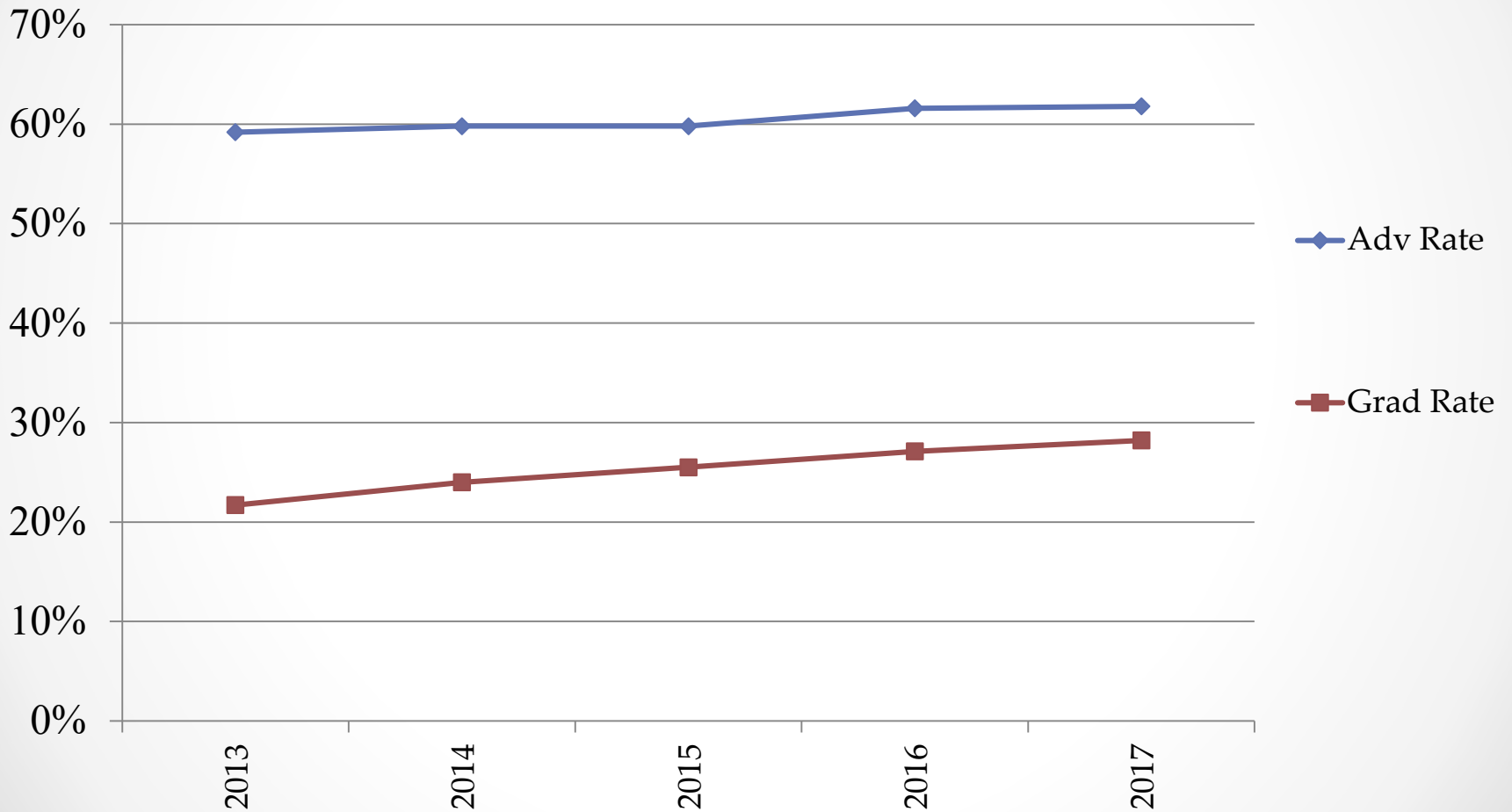
COMMUNITY COLLEGE GRADUATES BY ECONOMIC DEVELOPMENT REGION, 2008 TO 2018 % CHANGE

- **Northeast** - CCC Daley, CCC Kennedy-King, CCC Malcolm X, CCC Olive-Harvey, CCC Truman, CCC Washington, CCC Wilbur-Wright, DuPage, Elgin, Harper, Joliet, Kishwaukee, Lake County, McHenry, Moraine Valley, Morton, Oakton, Prairie State, South Suburban, Triton, Waubonsee
- **Northern Stateline** - Rock Valley
- **Northwest** - Black Hawk, Highland, Illinois Valley, Sauk Valley
- **East Central** - Danville, Kankakee, Parkland
- **Central** - Lincoln Land, Richland
- **North Central** - Heartland, Illinois Central, Spoon River
- **West Central** - Sandburg, Wood
- **Southeastern** - IECC Lincoln Trail, IECC Olney Central, Lake Land
- **Southern** - IECC Frontier, IECC Wabash Valley, Logan, Rend Lake, Shawnee, Southeastern
- **Southwestern** - Kaskaskia, Lewis & Clark, SWIC



Note – Overlap across Economic Development Regions may occur for some community colleges.

GRADUATION RATE AND STUDENT ADVANCEMENT RATE IN ILLINOIS COMMUNITY COLLEGES





ILLINOIS COMMUNITY COLLEGE ANNUAL ENROLLMENT AND COMPLETIONS

March 15, 2019 Board Meeting

Nathan Wilson

ICCB Deputy Director for Academic Affairs and Institutional Effectiveness