



ANNUAL ENROLLMENT AND COMPLETIONS

March 16, 2018 Board Meeting

Nathan Wilson

ICCB Associate Deputy Director for Research and Policy Studies

ENROLLMENT AND COMPLETIONS

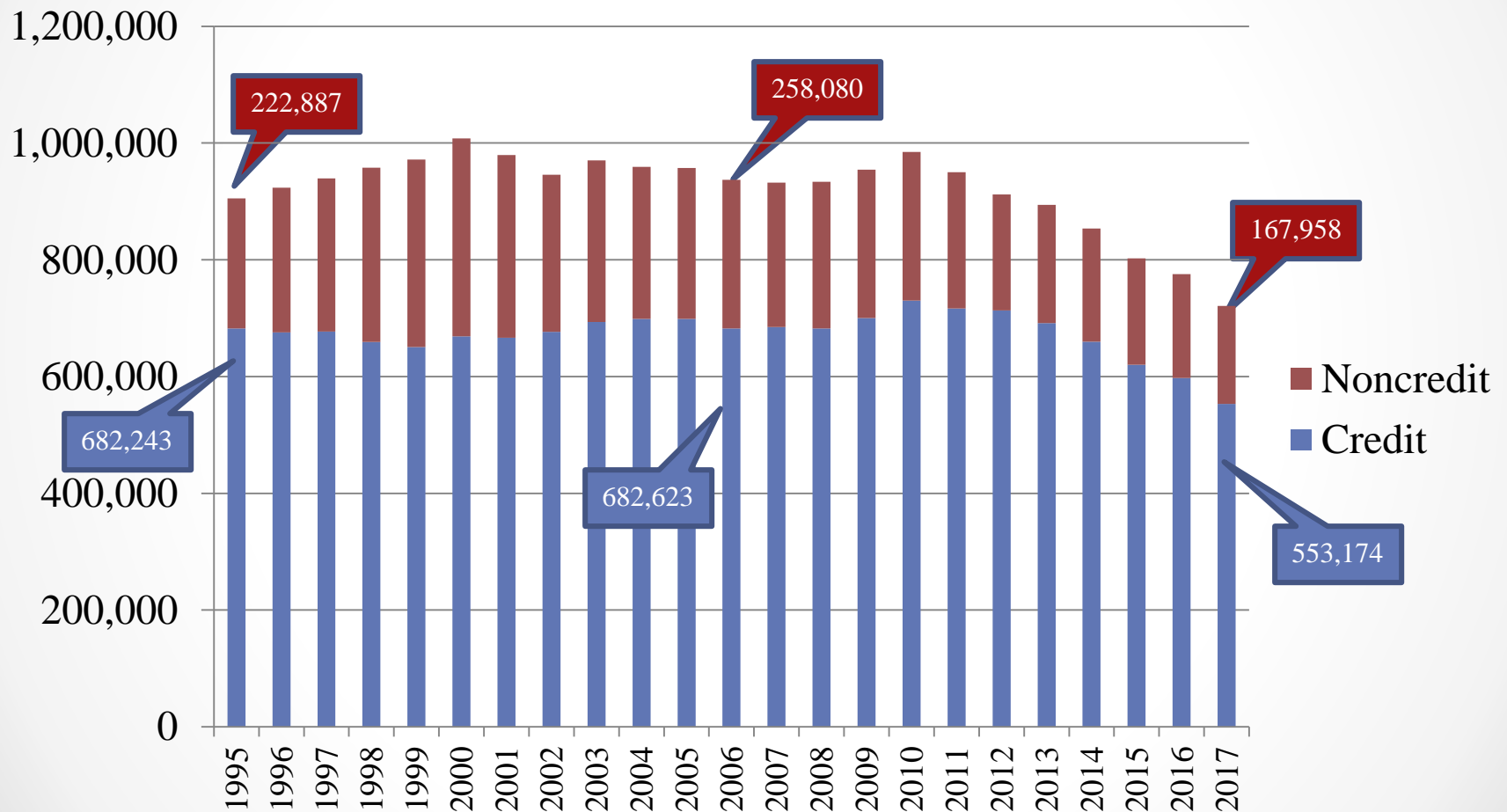
TOPICS OVERVIEW

- Illinois Community College Overall Enrollment Trends
- State Budget and Economy Impact
- Demographic Trends in Illinois Community Colleges
- Illinois High School Graduates College-Going Trends
- Peer State Comparison
- Illinois Higher Education Sector Analysis
- Success in Community Colleges

FOCUS ON BOARD GOALS

1. Smooth the Transition for all students into and through Postsecondary Education.
2. Contribute to the economic development of Illinois by providing robust workforce training, increasing degree and credential attainment and creating talent pools to attract new business.
3. Engage with all stakeholders to align board policies to improve student outcomes and increased access to public information on system effectiveness.

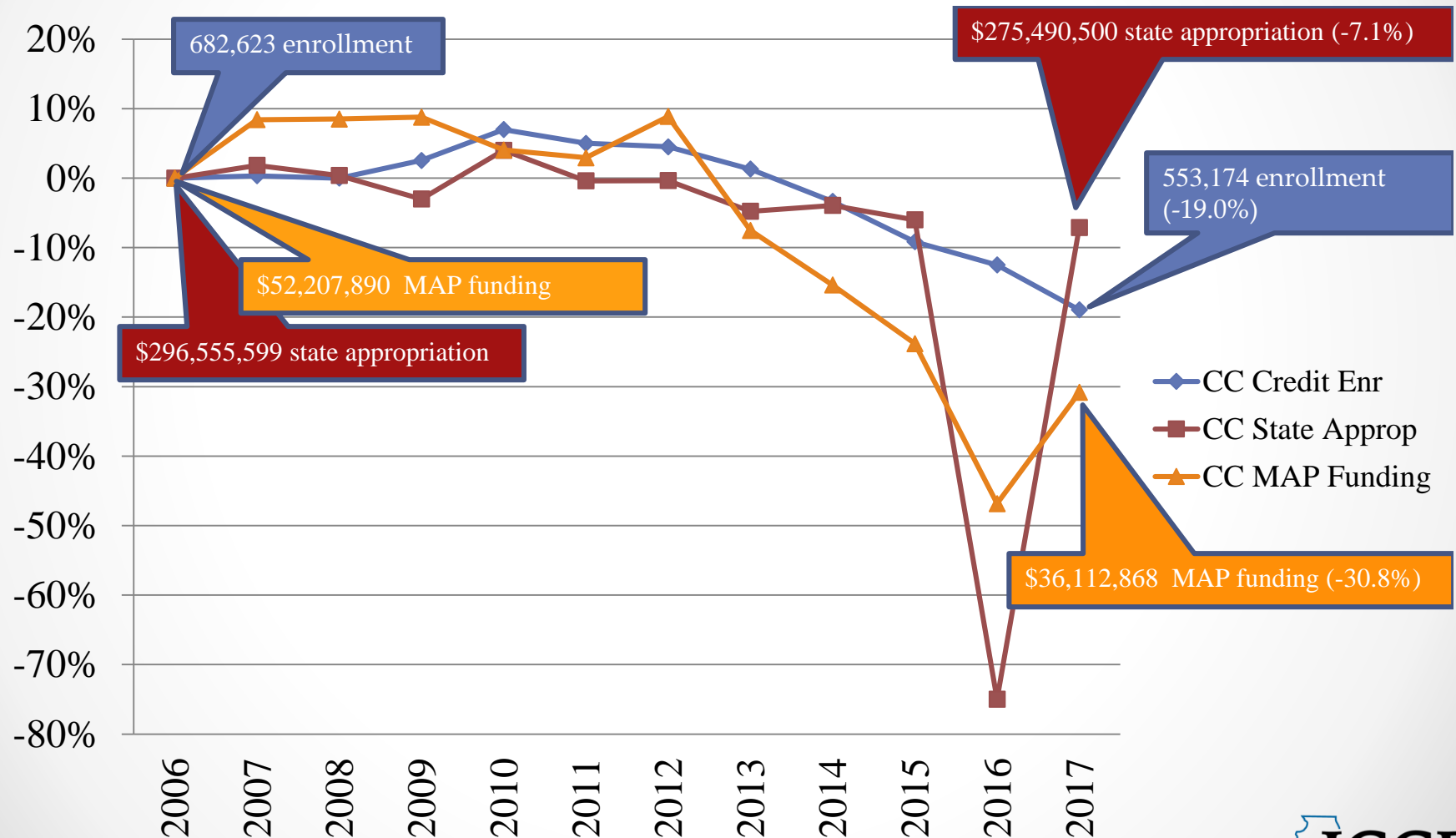
ILLINOIS COMMUNITY COLLEGES TOTAL STUDENTS SERVED THROUGH CREDIT AND NONCREDIT COURSEWORK



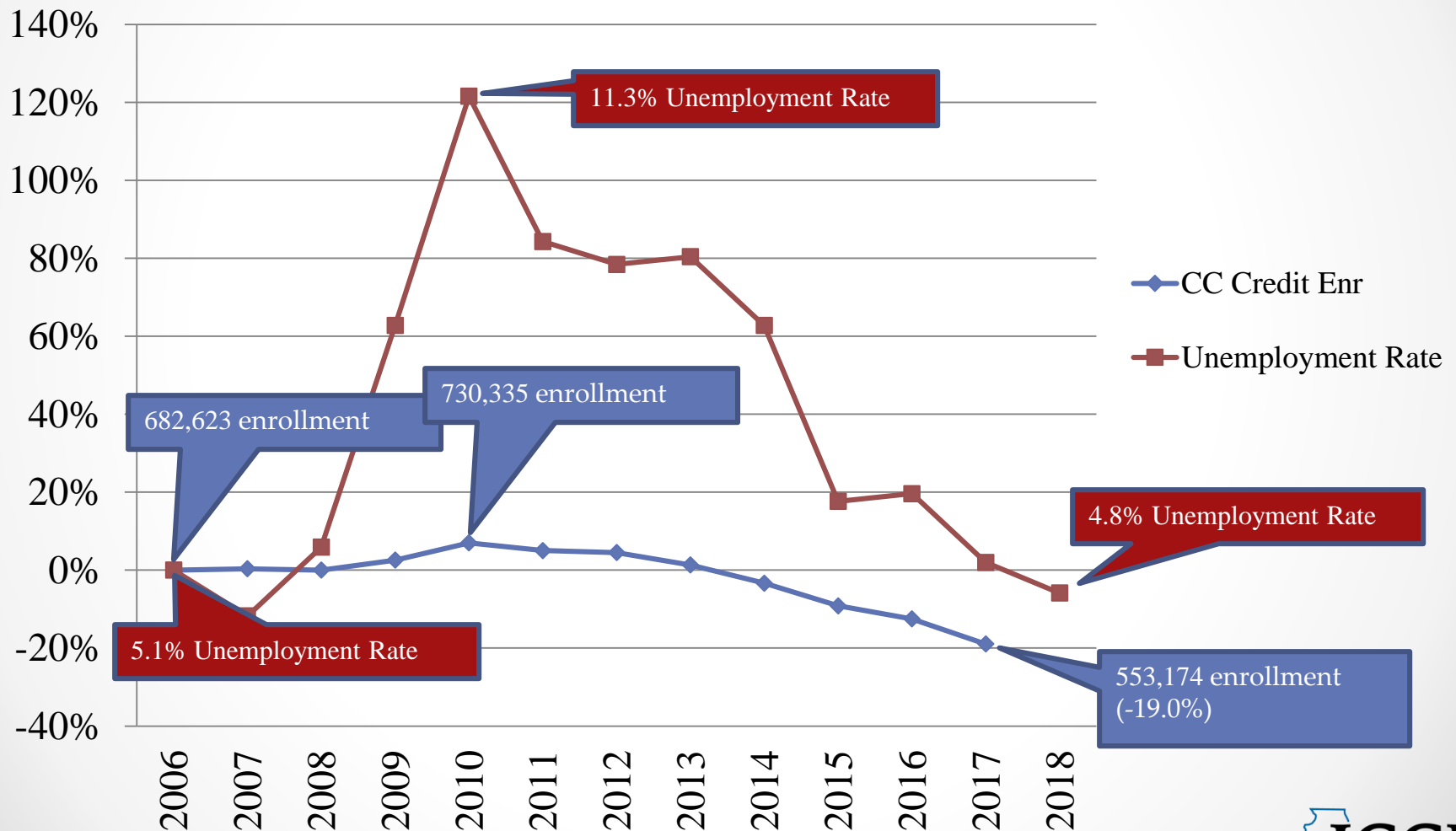
ENROLLMENT FREQUENTLY ASKED QUESTIONS

- Has the state budget impacted community college enrollment?
- Is the enrollment decline due to baccalaureate/transfer programs, CTE, or other areas of instruction?
- What regions of Illinois are experiencing the largest enrollment declines?
- Are student demographics in the Illinois Community College System changing?
- Are fewer Illinois graduating high school students attending community colleges?
- Are border and peer states facing the same community college enrollment struggles as Illinois? Within Illinois, are the other higher education sectors showing enrollment declines too?

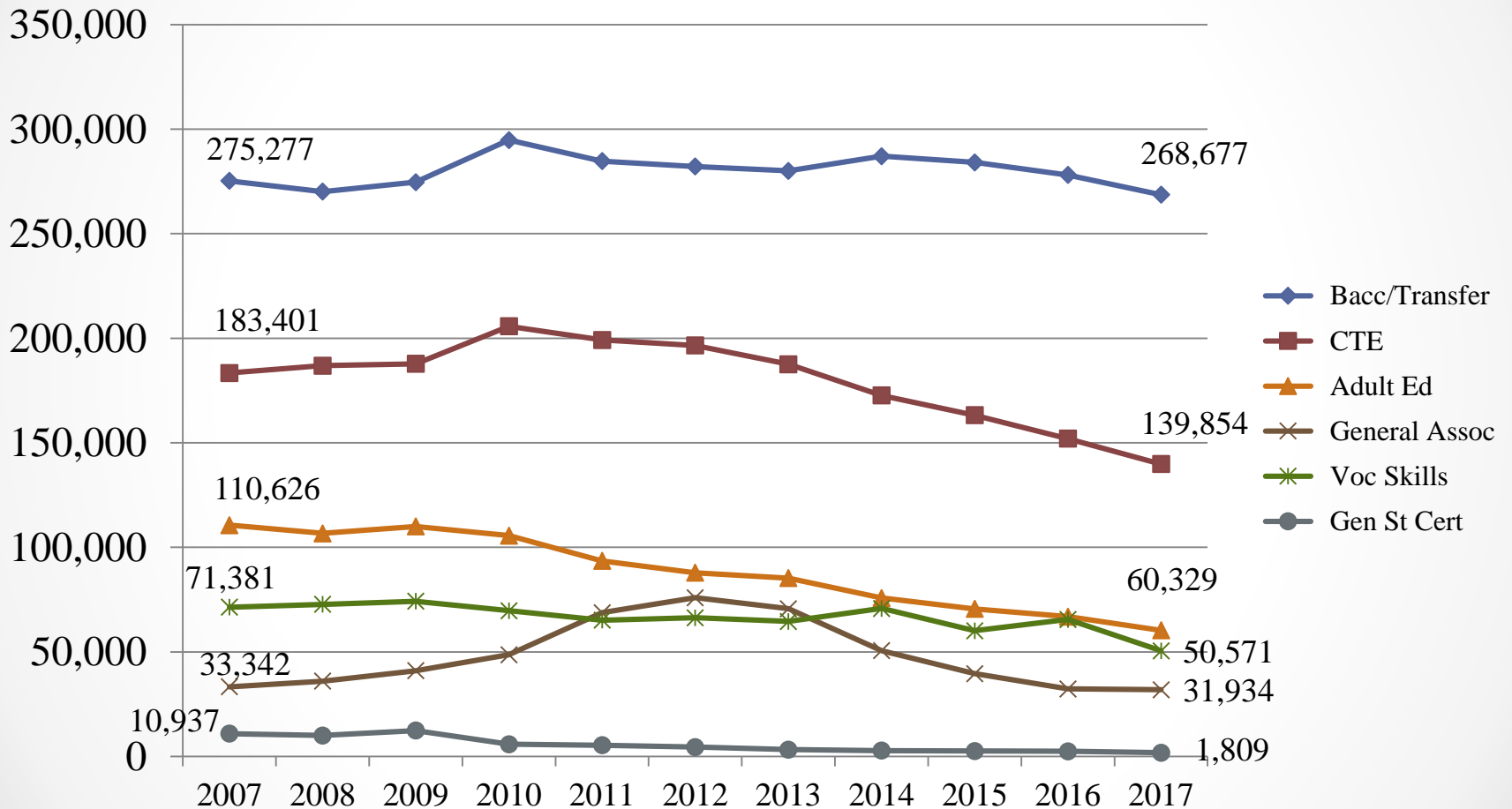
TRENDS FOR IL COMMUNITY COLLEGE ENROLLMENT / STATE APPROPRIATION / MAP FUNDING



IL COMMUNITY COLLEGE ENROLLMENT AND UNEMPLOYMENT RATE

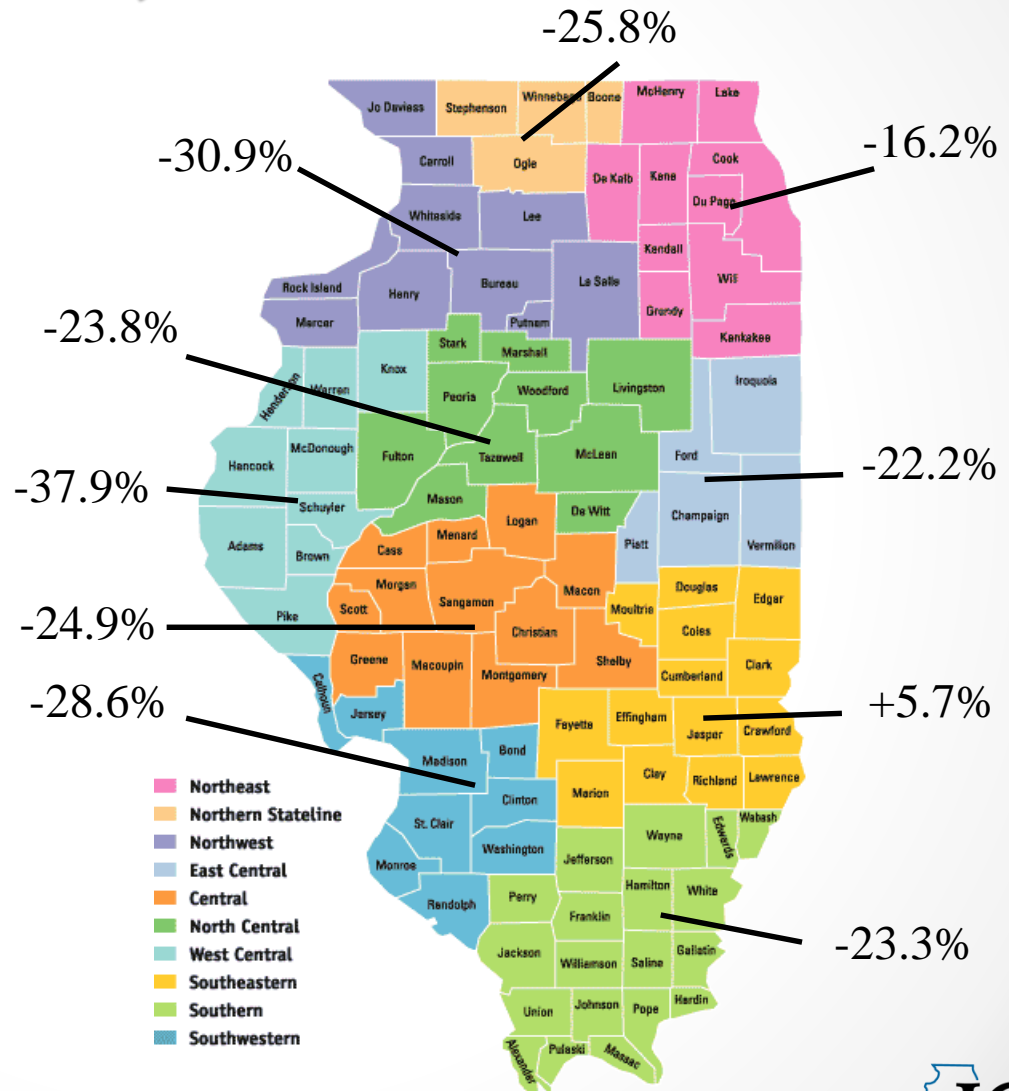


ANNUAL STUDENT ENROLLMENTS BY INSTRUCTIONAL PROGRAM AREA IN ILLINOIS COMMUNITY COLLEGES



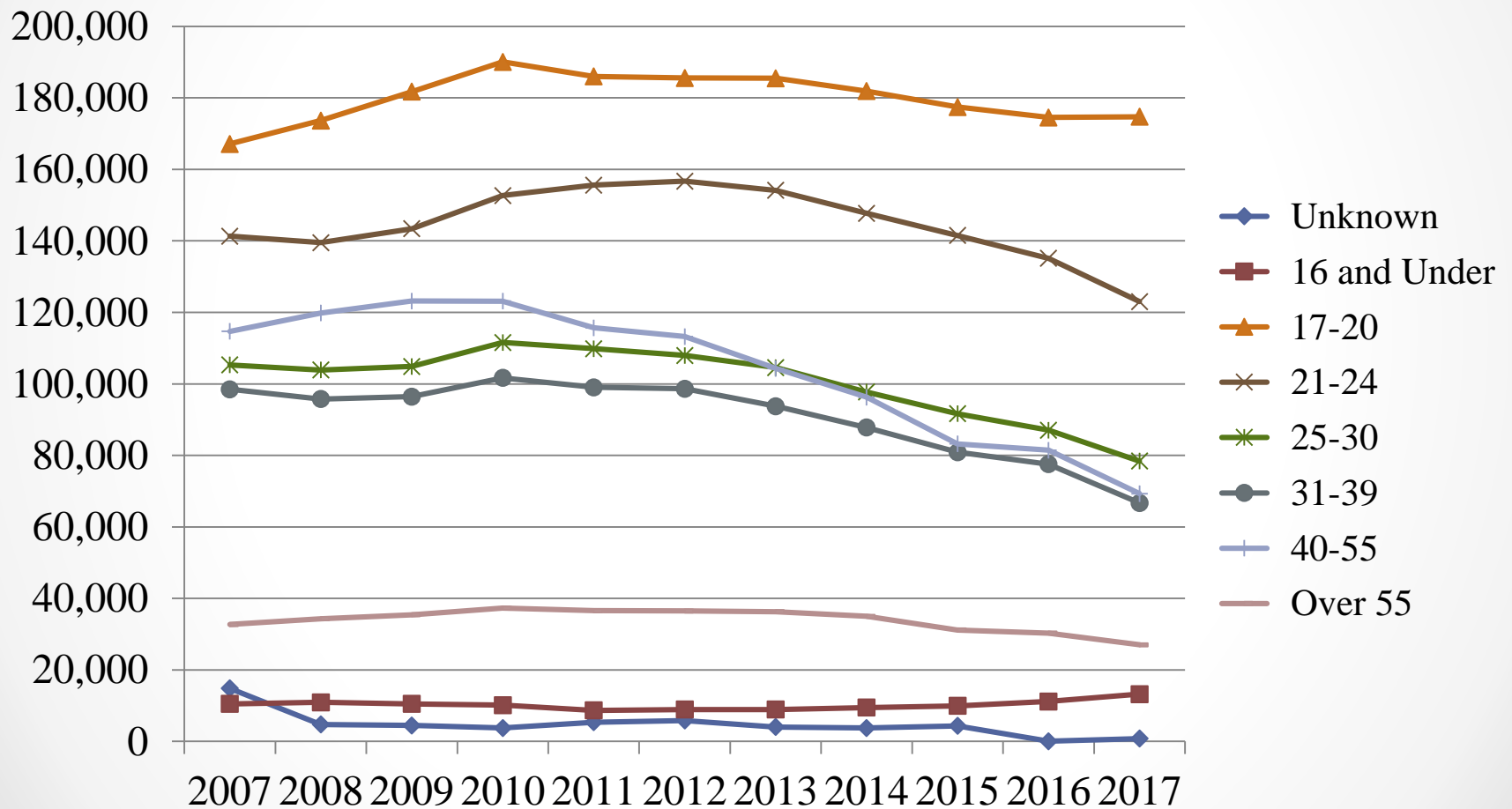
COMMUNITY COLLEGE ENROLLMENT BY ECONOMIC DEVELOPMENT REGION, 2007 TO 2017 % CHANGE

- **Northeast** - CCC Daley, CCC Kennedy-King, CCC Malcolm X, CCC Olive-Harvey, CCC Truman, CCC Washington, CCC Wilbur-Wright, DuPage, Elgin, Harper, Joliet, Kishwaukee, Lake County, McHenry, Moraine Valley, Morton, Oakton, Prairie State, South Suburban, Triton, Waubonsee
- **Northern Stateline** - Rock Valley
- **Northwest** - Black Hawk, Highland, Illinois Valley, Sauk Valley
- **East Central** - Danville, Kankakee, Parkland
- **Central** - Lincoln Land, Richland
- **North Central** - Heartland, Illinois Central, Spoon River
- **West Central** - Sandburg, Wood
- **Southeastern** - IECC Lincoln Trail, IECC Olney Central, Lake Land
- **Southern** - IECC Frontier, IECC Wabash Valley, Logan, Rend Lake, Shawnee, Southeastern
- **Southwestern** - Kaskaskia, Lewis & Clark, SWIC

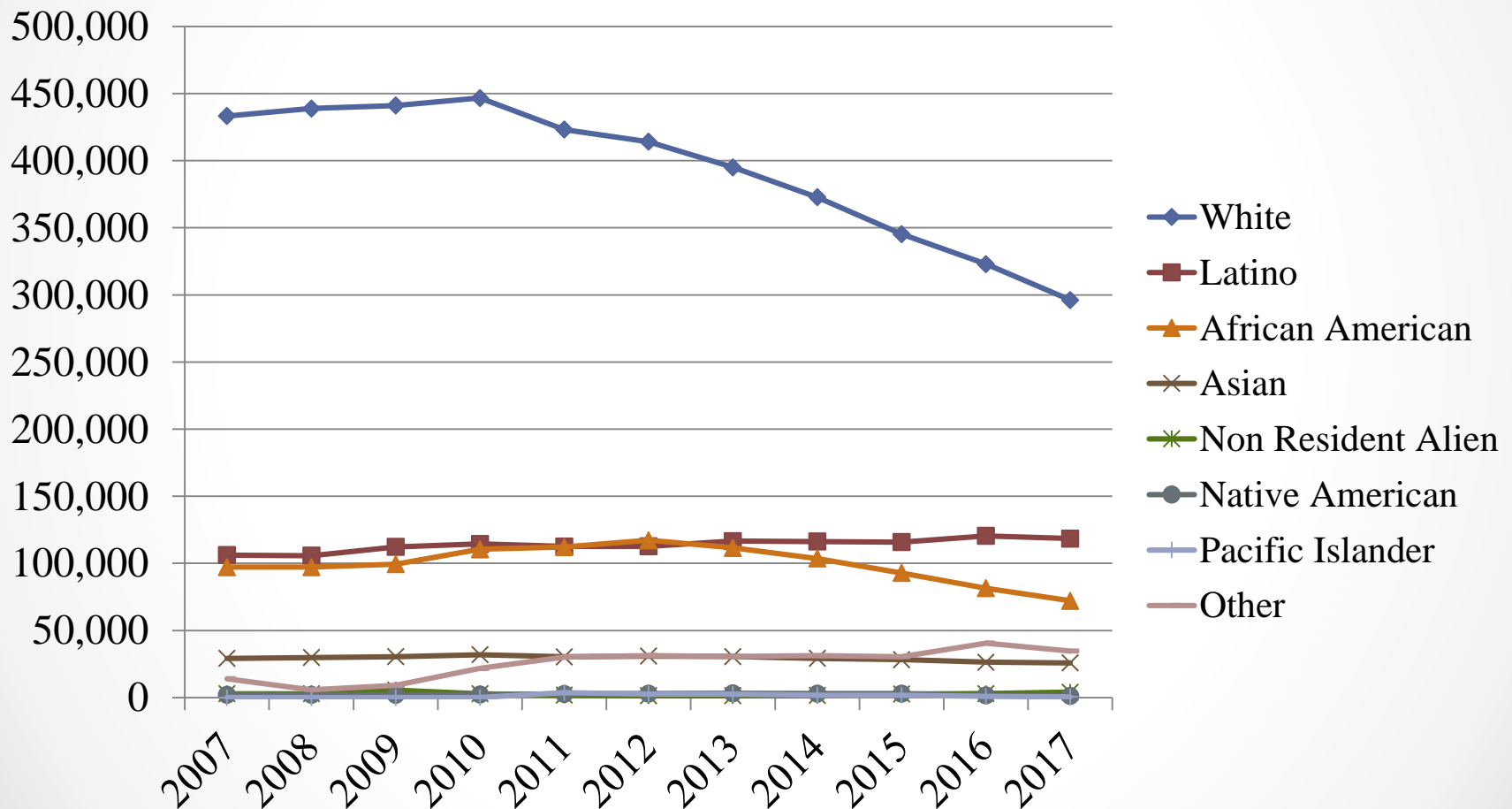


Note – Overlap across Economic Development Regions may occur for some community colleges.

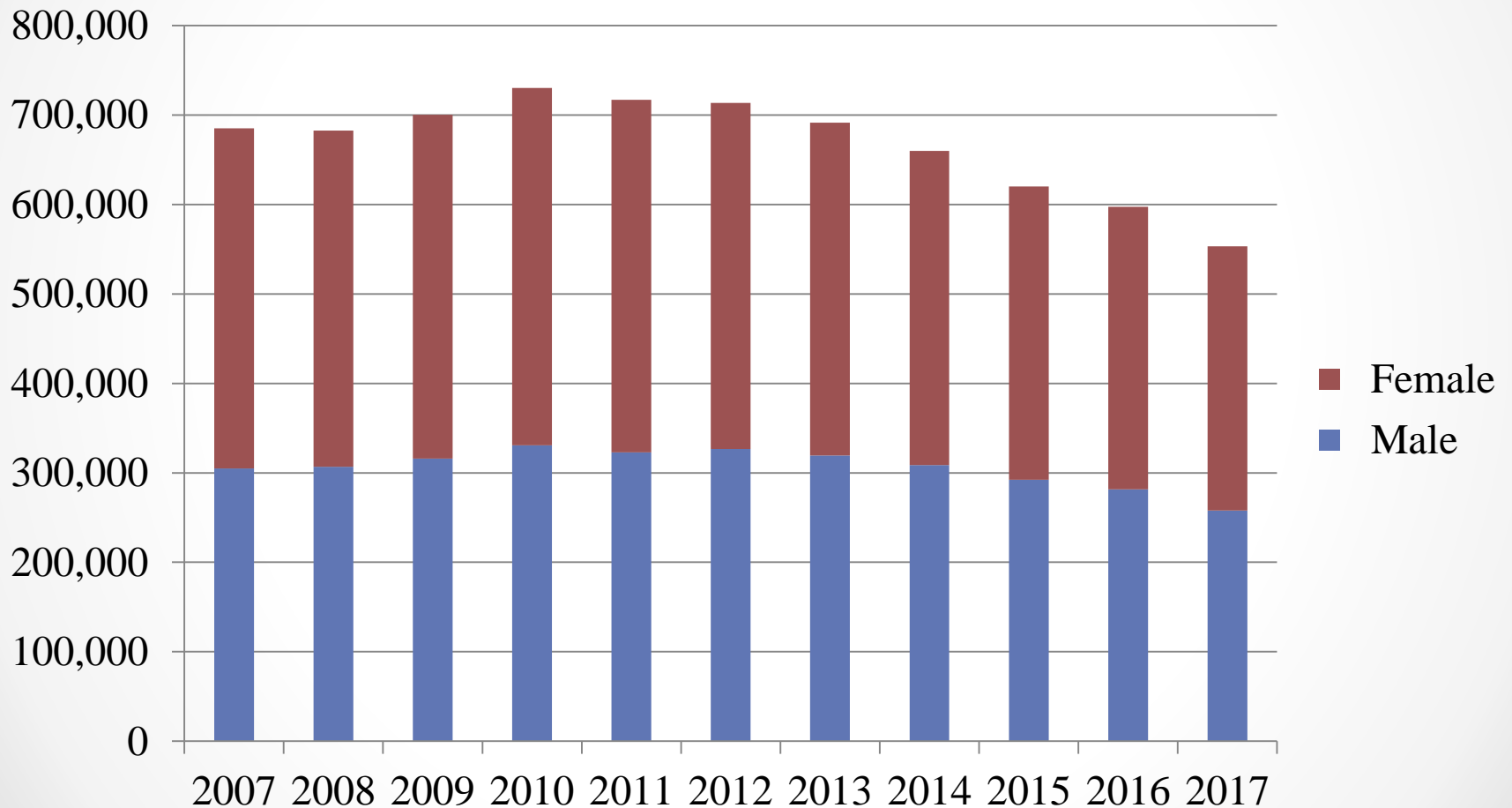
ANNUAL STUDENT ENROLLMENTS BY AGE IN ILLINOIS COMMUNITY COLLEGES



ANNUAL STUDENT ENROLLMENTS BY RACE/ETHNICITY IN ILLINOIS COMMUNITY COLLEGES



ANNUAL STUDENT ENROLLMENTS BY GENDER IN ILLINOIS COMMUNITY COLLEGES



IL PUBLIC HS GRADUATES INITIAL NATIONAL COLLEGE ENROLLMENT

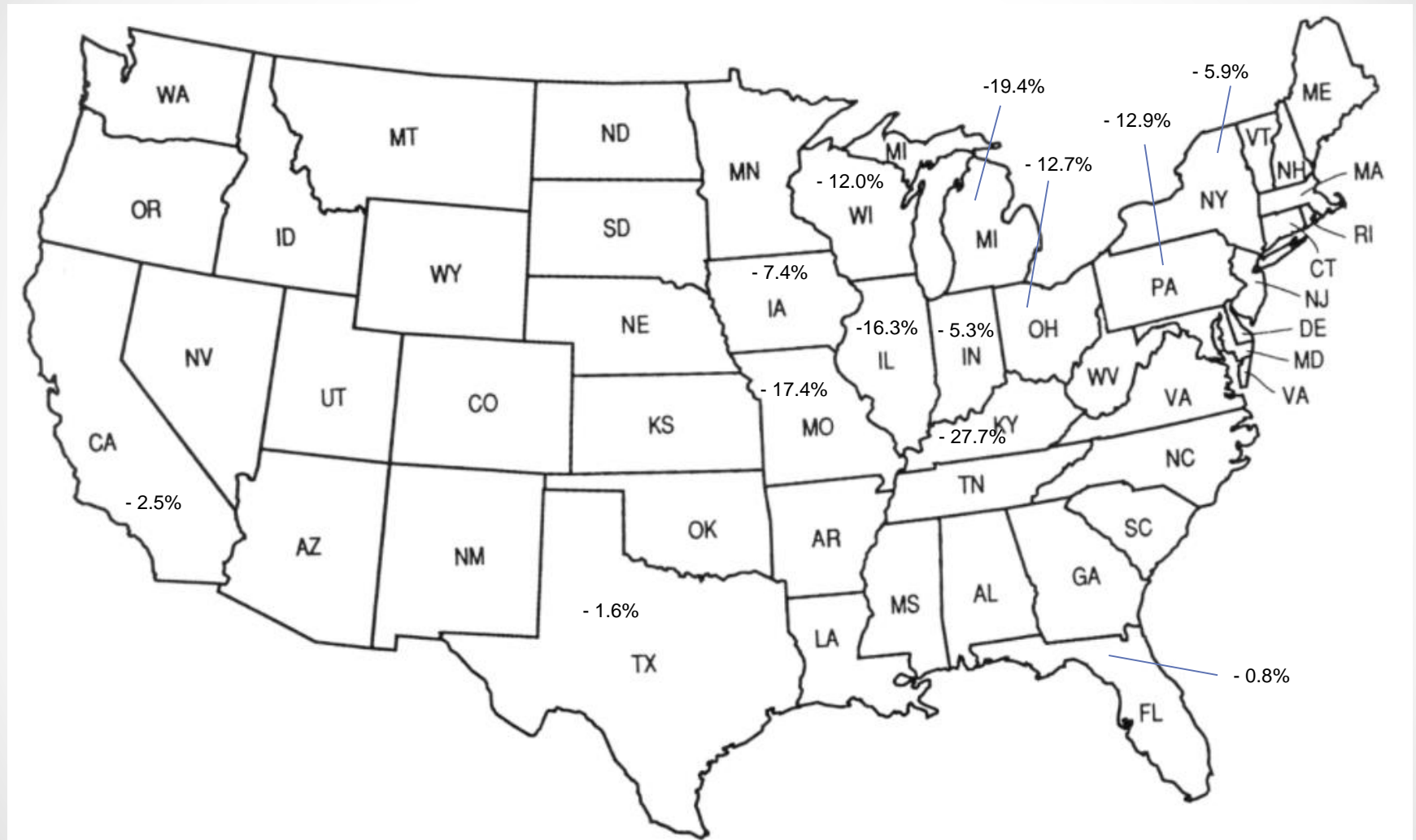
	2014		2015		2016	
Sector	Number	% of Total	Number	% of Total	Number	% of Total
4-year	52,307	37.6%	49,611	36.1%	51,035	37.1%
2-year	35,922	25.8%	39,419	28.7%	37,523	27.3%
Less than 2-year	97	0.1%	72	0.1%	41	0.0%
Total Enrolled	88,326	63.5%	89,102	64.9%	88,599	64.4%
Not Yet Enrolled	50,730	36.5%	48,188	35.1%	48,985	35.6%
Total	139,056	100.0%	137,290	100.0%	137,584	100.0%

Data Source – Illinois State Board of Education and the National Student Clearinghouse Student Tracker.

Reference – Illinois Board of Higher Education. (January 2018). Outmigration Context: College Enrollment Patterns of Recent Illinois Public High School Graduates (IBHE DataPoints 2018-2). Springfield, IL.

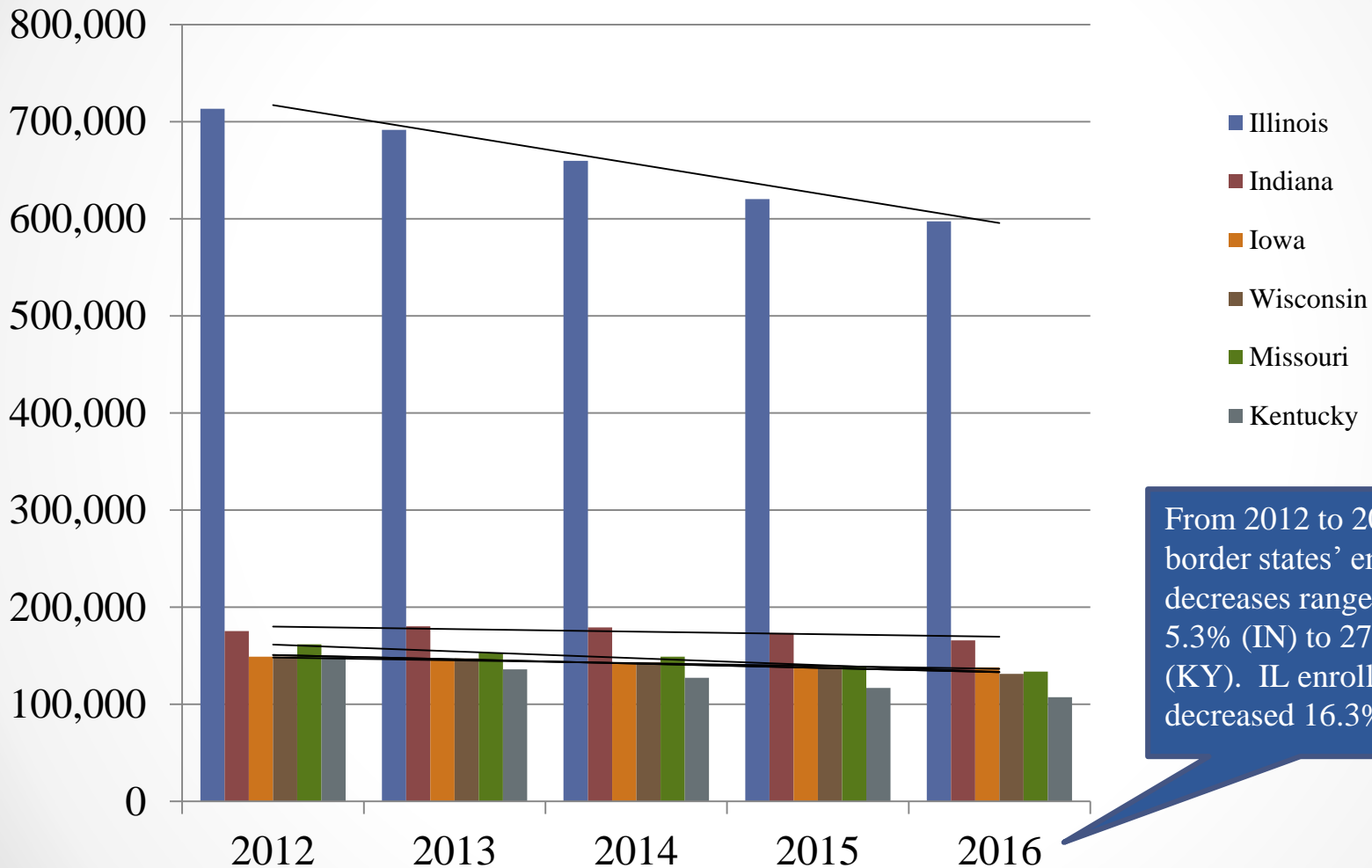
- The number of Illinois public high school graduates declined from 2014 to 2015 with a slight uptick in 2016.
- From 2014 to 2016, more than one-quarter of the Illinois high school graduates enrolled in colleges within the two-year sector.
- Majority (approximately 96%) of 2-year enrollees were in IL while the rate of students enrolling out-of-state for 4-years increased each year (42.6% in 2014, 44.4% in 2015, and 45.7% in 2015).

BORDER & PEER STATE ENROLLMENT FOR COMMUNITY COLLEGE SECTOR , 2012 TO 2016 % CHANGE



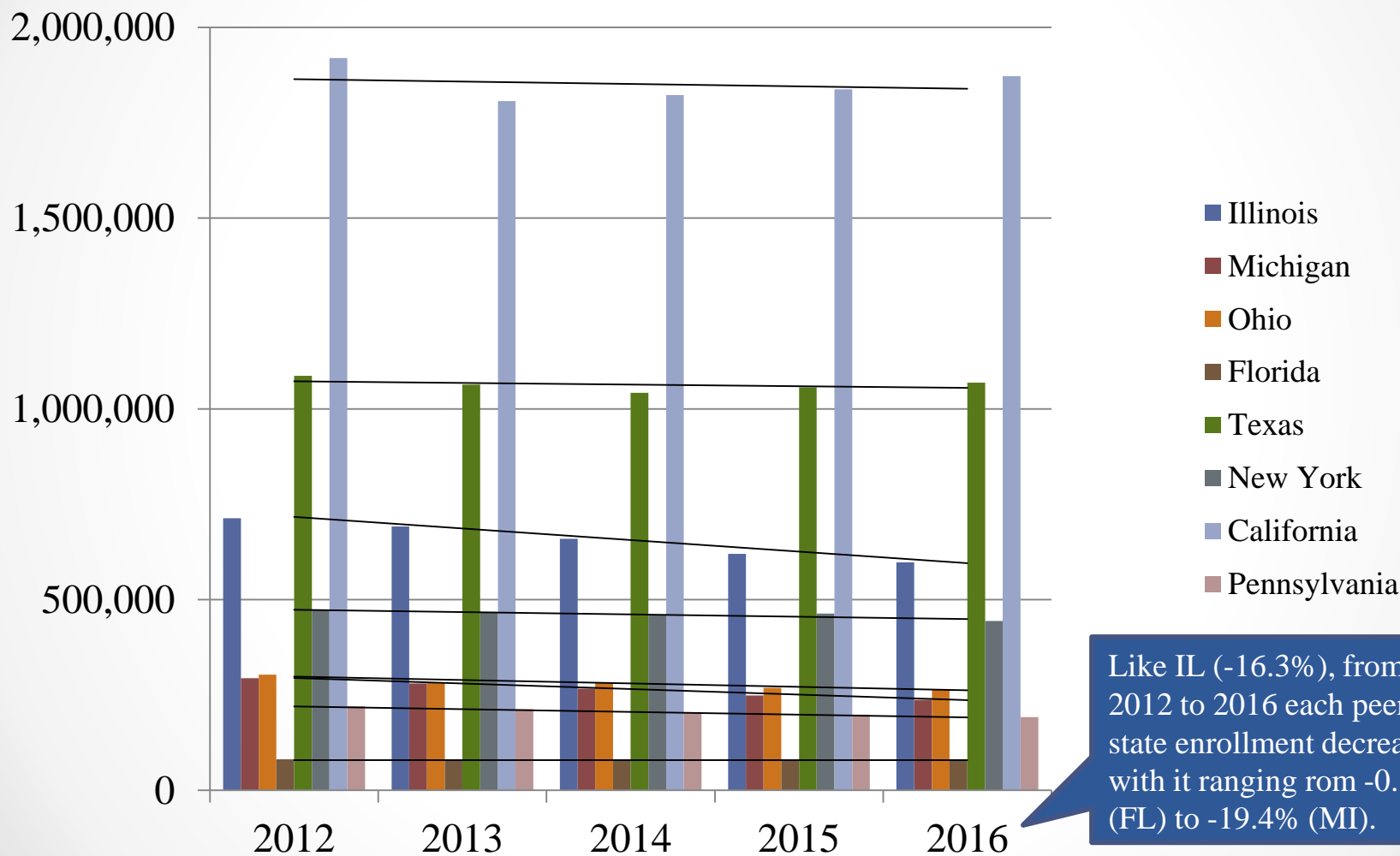
Source – IPEDS Data Center

BORDER STATE ANALYSIS FOR COMMUNITY COLLEGE SECTOR



From 2012 to 2016, border states' enrollment decreases ranged from 5.3% (IN) to 27.7% (KY). IL enrollment decreased 16.3%.

PEER STATE ANALYSIS FOR COMMUNITY COLLEGE SECTOR



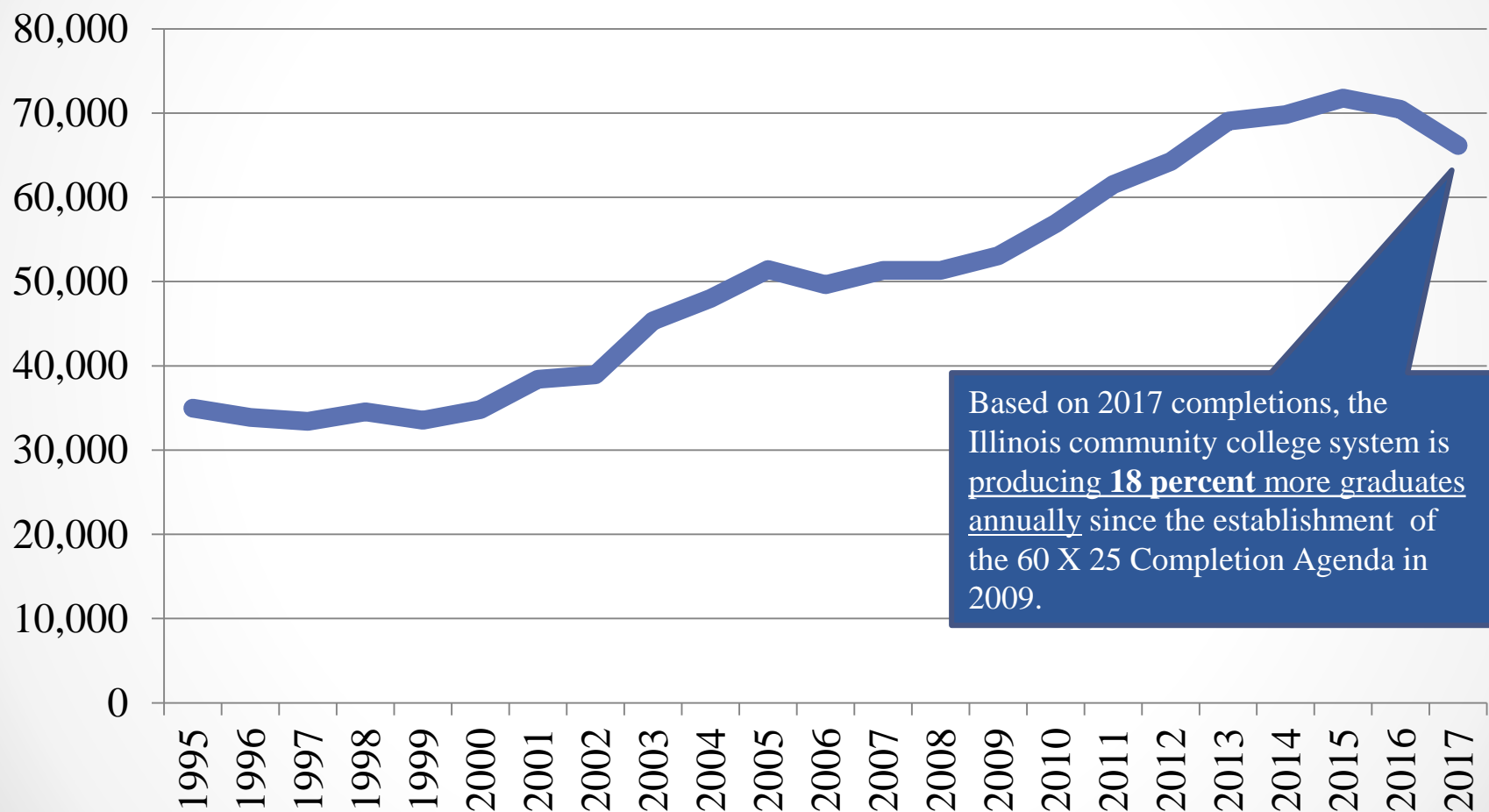
ILLINOIS HIGHER EDUCATION ENROLLMENT BY SECTOR

IL Public Uni. Total	IL Public Uni. Total	IL Public Uni. %	IL Comm. Coll. Total	IL Comm. Coll. %	IL Ind. NFP Inst. Total	IL Ind. NFP Inst. %	IL Ind. FP Inst. Total	IL Ind. FP Inst. %	Out-of- State Inst. Total	Out-of- State Inst. %	IL All Inst. Total	IL All Inst. %
Fall 2016	188,405	25.1%	277,038	36.8%	214,904	28.6%	61,980	8.2%	9,615	1.3%	751,942	100%
Fall 2006	202,853	24.9%	350,508	43.0%	213,739	26.3%	34,843	4.3%	12,246	1.5%	814,189	100%
Fall 1996	192,319	26.5%	340,151	46.9%	176,700	24.4%	13,172	1.8%	2,385	0.3%	724,727	100%

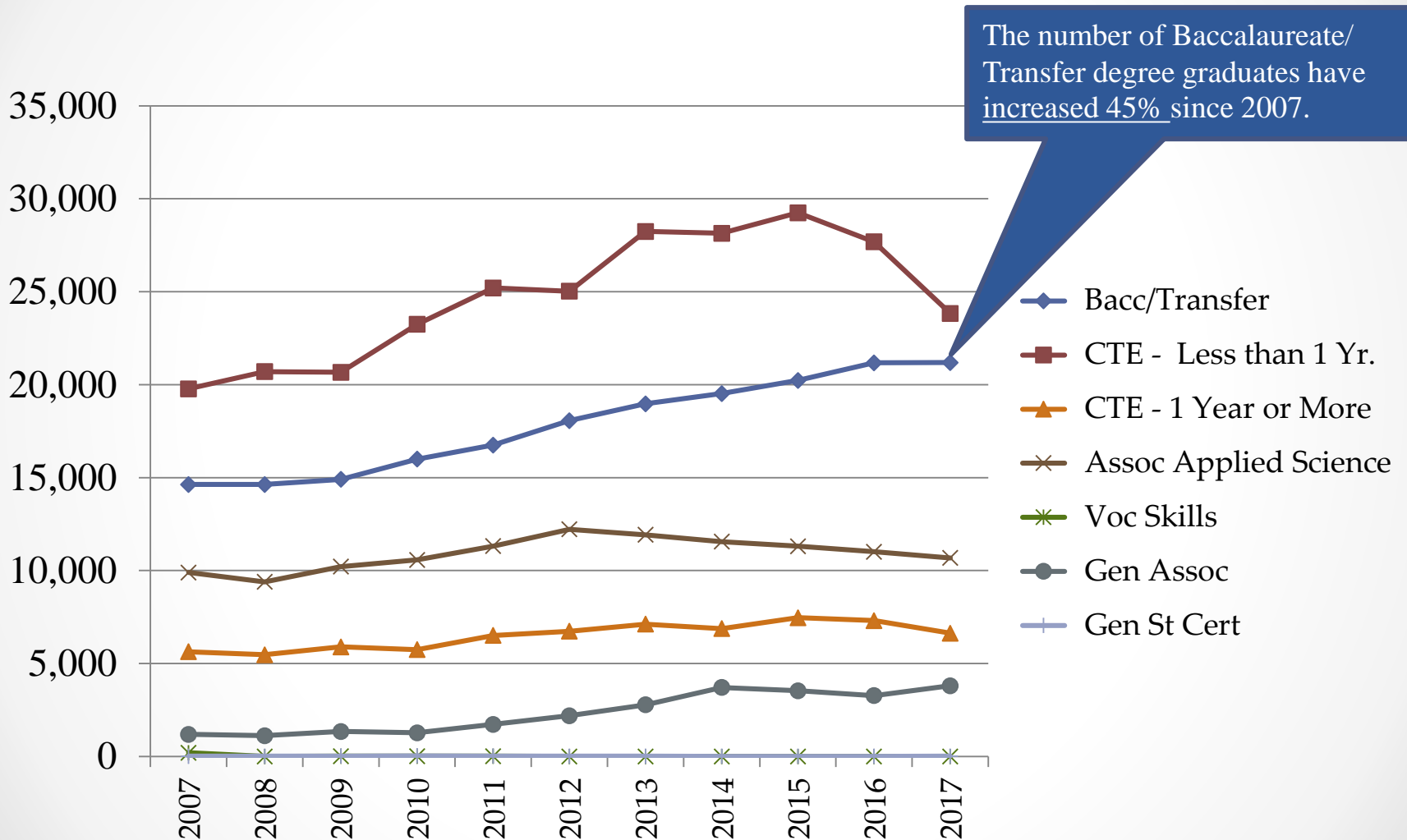
Illinois Higher Education

- CC sector still includes the most students but its “market share” has decreased 6.8% since Fall 2006 and 10.1% since Fall 1996.
- The fastest growing sector is Independent For-Profit with growth at 3.9% since Fall 2006 and 6.4% since Fall 1996.
- Public 4-year sector student population has decreased like the 2-year sector but at a slower rate.

ILLINOIS COMMUNITY COLLEGES ANNUAL GRADUATES FISCAL YEARS 1993-2016

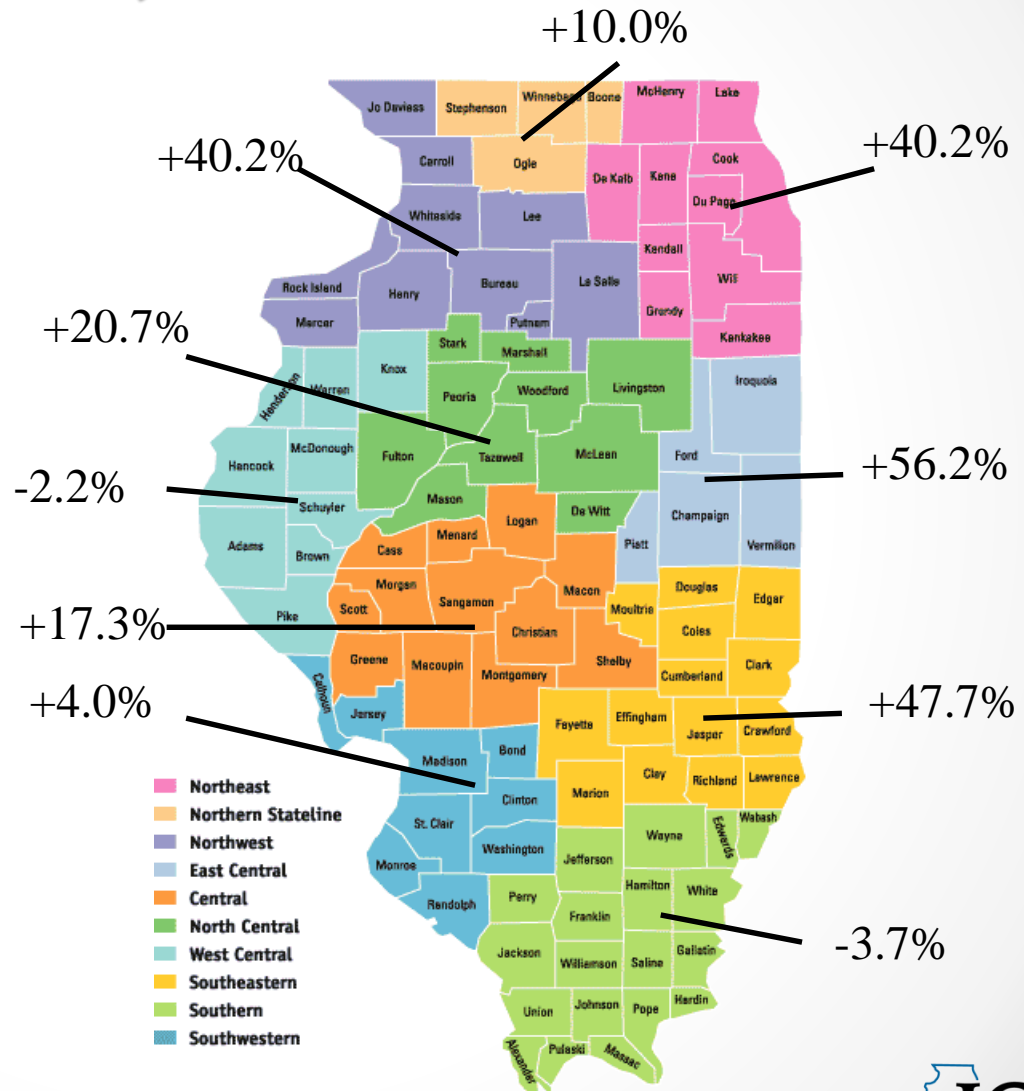


ANNUAL STUDENT GRADUATES BY INSTRUCTIONAL PROGRAM AREA IN ILLINOIS COMMUNITY COLLEGES



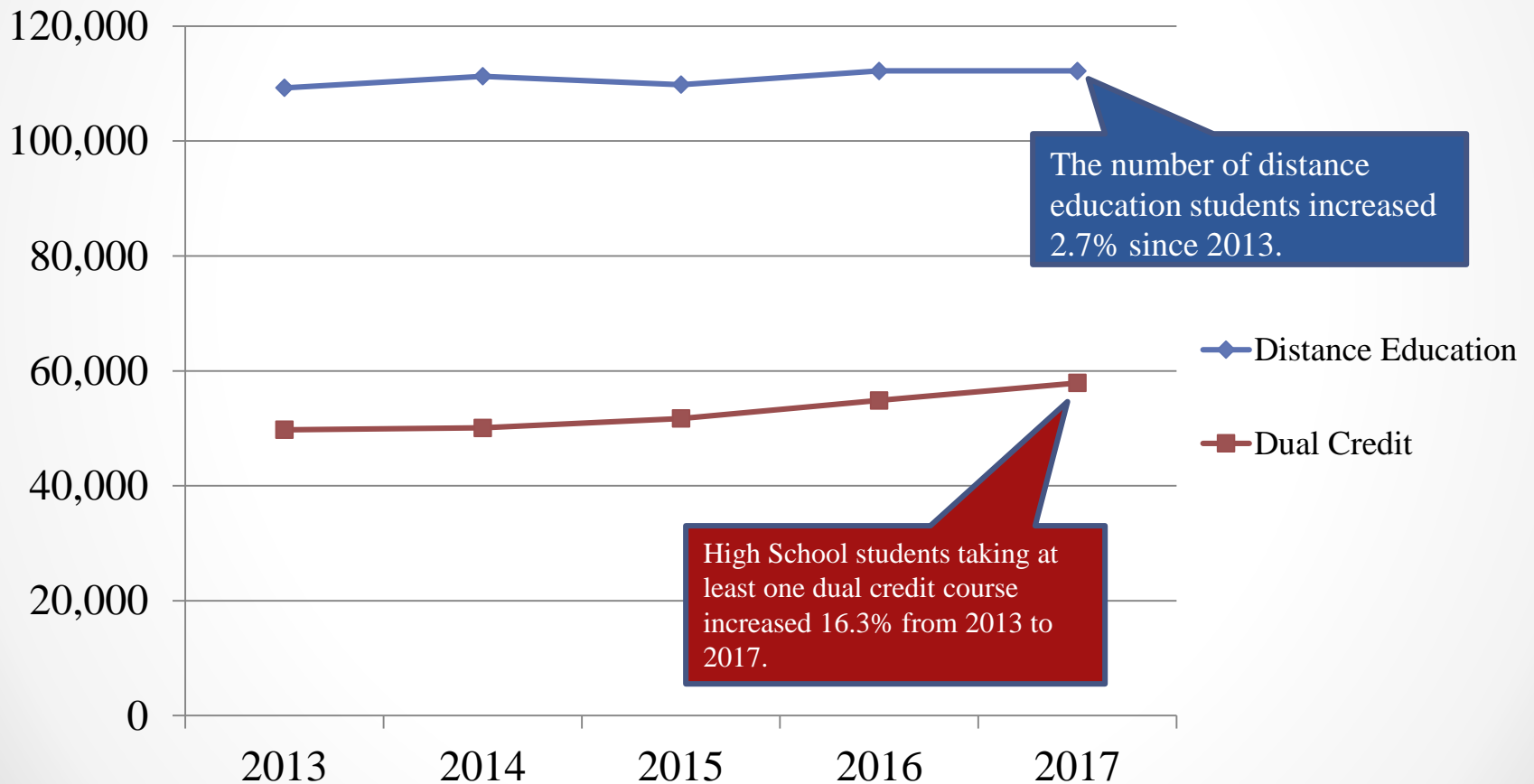
COMMUNITY COLLEGE GRADUATES BY ECONOMIC DEVELOPMENT REGION, 2007 TO 2017 % CHANGE

- **Northeast** - CCC Daley, CCC Kennedy-King, CCC Malcolm X, CCC Olive-Harvey, CCC Truman, CCC Washington, CCC Wilbur-Wright, DuPage, Elgin, Harper, Joliet, Kishwaukee, Lake County, McHenry, Moraine Valley, Morton, Oakton, Prairie State, South Suburban, Triton, Waubonsee
- **Northern Stateline** - Rock Valley
- **Northwest** - Black Hawk, Highland, Illinois Valley, Sauk Valley
- **East Central** - Danville, Kankakee, Parkland
- **Central** - Lincoln Land, Richland
- **North Central** - Heartland, Illinois Central, Spoon River
- **West Central** - Sandburg, Wood
- **Southeastern** - IECC Lincoln Trail, IECC Olney Central, Lake Land
- **Southern** - IECC Frontier, IECC Wabash Valley, Logan, Rend Lake, Shawnee, Southeastern
- **Southwestern** - Kaskaskia, Lewis & Clark, SWIC



Note – Overlap across Economic Development Regions may occur for some community colleges.

INSTRUCTIONAL AREAS OF GROWTH IN THE ILLINOIS COMMUNITY COLLEGE SYSTEM



ICCB RESEARCH AND POLICY STUDIES DIVISION

Nathan Wilson

Associate Deputy Director for Research and Policy Studies.

217-558-2067

nathan.wilson@illinois.gov

Jay Brooks

Director for Research and Policy Studies.

618-942-7460 (Herrin)

jay.brooks@illinois.gov

Michelle Dufour

Associate Director for Research and Policy Studies

217-782-9574

michelle.dufour@illinois.gov

Jana Ferguson

Associate Director for Research and Policy Studies

217-558-2163

jana.ferguson@illinois.gov



ENROLLMENT STRATEGIES

STRATEGIC ENROLLMENT MANAGEMENT

- Increase collaboration across the college community
- Create a data-rich environment to inform decisions
- Establish comprehensive student enrollment goals
- Promote student success by facilitating effective strategic and financial planning
- Strengthen communications and marketing with internal and external stakeholders

Source: American Association of Collegiate Registrars and Admissions Officers (2009) *Applying SEM at the Community College*, edited by B Bontrager & B. Clemetsen. AACRAO, Washington D.C.

PRE-ENROLLMENT

- Preliminary financial aid estimates
- Customized electronic communications
- Standardized communications plan
- Pre-enrollment success course
- One-stop enrollment caravan

Source: Education Advisory Board (2017) *Increasing Enrollment in Today's Community Colleges*.

ENROLLMENT

- Refine institutional processes
- Articulate clear enrollment steps
- Frame important optional activities as part of the process
- Send missing step enrollment prompts

Source: Education Advisory Board (2017) *Avoid "fight-or-flight" reactions by redesigning the onboarding experience.*

INTAKE SURVEYS

- Capture information about potential non-cognitive risk factors
- Include in admissions process or at new student orientation
- Create a campus services referral matrix to match student responses to services
- Customize invitations to participate in right-fit clubs, programs, and services

Source: Education Advisory Board (2017) *Building Pathways to Community College Success*.

ADVISING

- Connect with students early
- Require advising prior to registration
- Improve the depth of conversation
- Find scalable strategies

Source: Center for Community College Student Engagement. (2018) *Show me the way: The power of advising in community colleges.*

Righting the Ship

...