

Activities/ Resources for Outcome #7

PowerPoint: Email

Using E-mail

Creating and Sending Messages

- The Inbox view serves as Outlook's e-mail interface
- Click the Inbox icon in the Outlook Bar or Folder List to display the Inbox view
- To create a new e-mail message, display the Inbox view, then click New in the Standard toolbar
- To send an e-mail message, click Send in the message dialog box, or click Send/Receive in the Standard toolbar to send all messages stored in your Outbox

Viewing Incoming Messages

- To check for new messages, display the Inbox view, then click Send/Receive in the Standard toolbar
- You can view the contents of incoming messages in a preview pane, or you can double-click messages to view the contents in a separate window

Replying to Messages

- To reply to a message:
 - Select the header of the message to which you want to respond, then click Reply in the Standard toolbar, or
 - Open the message, then click Reply in the message dialog box
- By default, replies automatically include the message recipient's e-mail address, the subject line preceded by RE:, and the original message's information

Forwarding Messages

- Forwarding a message sends a copy of a message you received to others
- To forward a message:
 - Select the header of the message you want to forward, then click Forward in the Standard toolbar
 - or
 - Open the message and click Forward in the message dialog box
 - Enter recipient names in the To text box
 - Send the message



Forwarding Messages (cont'd)

- By default, forwarded messages automatically include the subject line preceded by FW: and the original message's information
- You can type additional information in the body of a forwarded message before you send the message



Recalling Messages

- You can recall or replace only messages that have not been read or moved out of the recipient's Inbox
- To recall or replace a message:
 - Select the message you sent in your Sent Items folder
 - Click Actions, Recall This Message...
 - Complete the Recall This Message dialog box

Organizing Messages

- You can organize your Inbox by:
 - Storing messages from particular senders in separate folders
 - Modifying the Inbox view, such as grouping messages by topic or sorting messages
 - Modifying how messages display, such as by using color, bold type or other font attributes
- Many organizational settings are available in the Organize box, which opens in Outlook's view area when you click the Organize button in the Standard toolbar

Deleting Messages

- Delete messages regularly to avoid cluttering your Inbox and to conserve system space
- To delete messages:
 - Right-click a message header, then click Delete
 - Select a message header, then click the Delete button in the Standard toolbar
- Deleted messages are moved to the Deleted Items folder
- Delete the messages in the Deleted Items folder to permanently remove them



Printing E-mail Messages

- E-mail messages can be printed in:
 - Memo Style – selected items are printed one at a time and attachments are printed as graphics, or
 - Table Style – selected items or all items can be printed in a list with visible columns denoted
- To print an e-mail message:
 - Select a message header or open a message
 - Click File, Print...
 - In the Print dialog box, select a print style
 - Click OK



Activities/ Resources for Outcome #8

Formatting text

Microsoft Word - WORD PROCESSING


Type the following paragraph. Do not forget to type the title. The program has word wrap so it is not necessary to press the enter key at the end of the line, only at the end of the paragraph. To fix any mistakes, one can use the delete key or the backspace key. The delete key erases the character at the cursor. The backspace key erases the character to the left of the cursor.

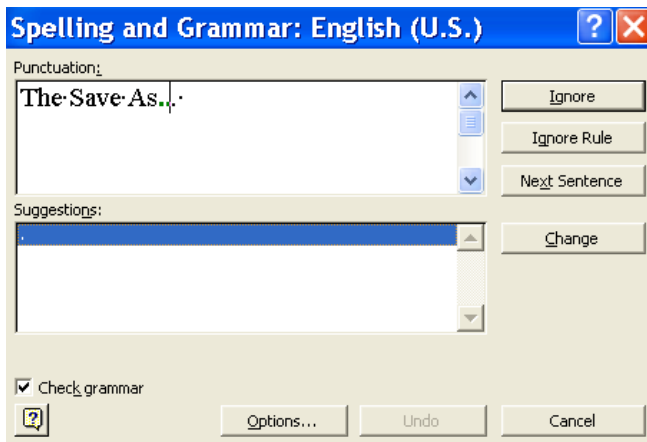
SSJ CONSTRUCTION CO.

Welders must always keep safety in mind. Remember that using your safety gear correctly is important for the safety and protection of all workers. It has been brought to our attention that some welders have been taking shortcuts with their gear. Shortcuts lead to accidents and injuries. No matter how small the task, you must wear a welding helmet. The helmet protects you from sparks, harmful light, and hot spatter. Remember to adjust your helmet so that it fits securely. Loose helmets can block your vision and cause accidents. Because of the high noise levels, all welders are strongly advised to wear ear plugs.

Stop Typing at this Point


Operate spell checker

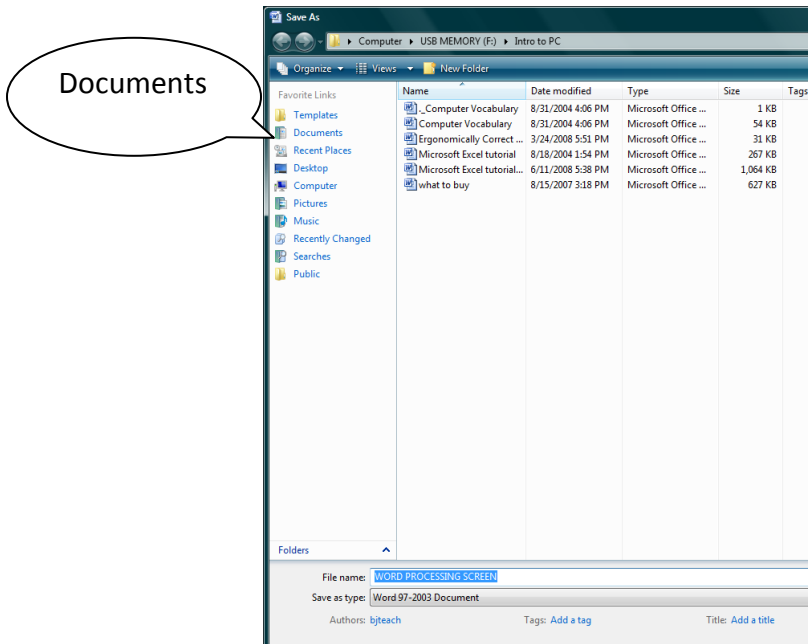
- Click on the Spell Checking icon which is on the ribbon menu under Review. Then click on ABC 
- The program will highlight misspelled words, and give options to change, ignore and provide suggestions for both spelling and grammar.



Save the File

After checking the file for errors, but before continuing, save the file. To save the file, complete the following steps:


- Press CTRL S or click on the icon of a disk.  The Save As... dialog box appears:



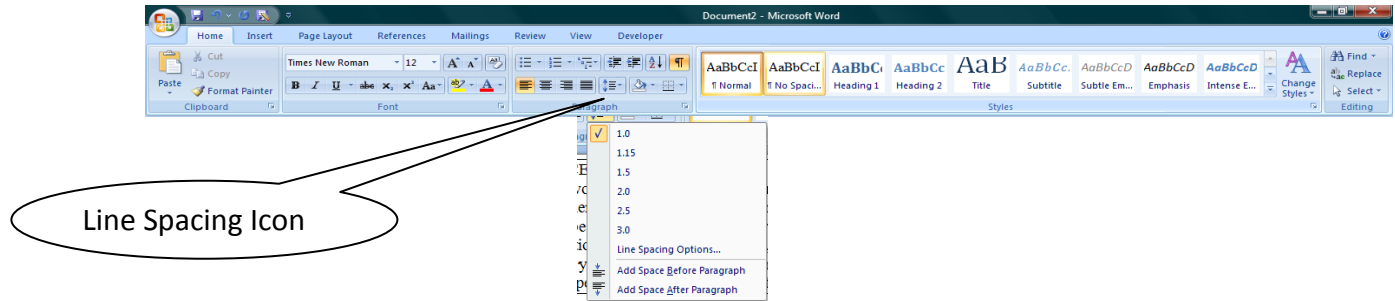
- Click on documents
- At file name, type: “SSJ Construction” should appear; press enter or click on save

Your file is now saved, and the screen still has your file visible.

Format File

- Press **Ctrl** and **Home** keys to move to the very beginning of your file.
- Place cursor on the "S" of the SSJ in the title.
- Highlight the title
 - Press and hold the left mouse button; drag or move the mouse until the title is highlighted.
- While the title is highlighted, click on the **B** for Boldface.
- Click on **U** for underline.
- Click on the centering box  to center the title
- Press up arrow key to remove highlight.
- Highlight the entire paragraph
 - Press and hold the left mouse button.
 - Drag the mouse until both paragraphs are highlighted.

- While the paragraphs are highlighted, double space the document
-
- To double space the document:
 - Click the line spacing icon



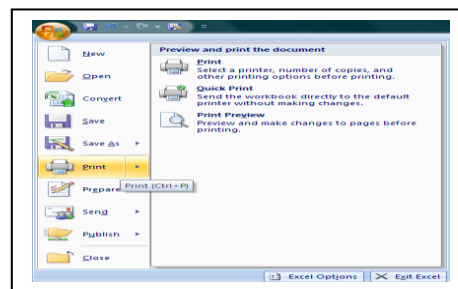
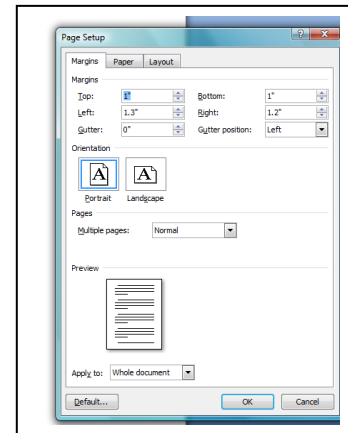
- Click on 2.0
- The paragraph is now double-spaced.
- Press up arrow to remove highlight.

Save this file.

- Press CTRL and S.

Print this file

- Click Page Layout on the Ribbon Menu
- Click on Margins
- Click on Custom
- At Top Margin line, type 2.0
- Press enter or click on OK.
- Click on Office icon
- Click on Print
- Click on Print in the next column.



SSJ CONSTRUCTION CO.

Welders must always keep safety in mind. Remember that using your safety gear correctly is important for the safety and protection of all workers. It has been brought to our attention that some welders have been taking shortcuts with their gear. Shortcuts lead to accidents and injuries.

No matter how small the task, you must wear a welding helmet. The helmet protects you from sparks, harmful light, and hot spatter. Remember to adjust your helmet so that it fits securely. Loose helmets can block your vision and cause accidents. Because of the high noise levels, all welders are strongly advised to wear ear plugs.

Activities/ Resources for Outcome #9

Microsoft Excel 2007 Investment Spreadsheet

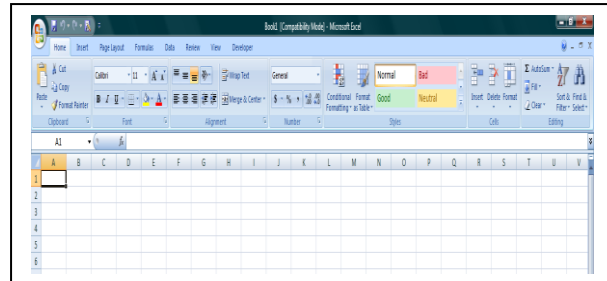


Microsoft Office Excel 2007

Start up Excel

Click on

A blank worksheet will appear.
A rectangle should be in cell A1!



Create first column heading

In cell A1, type the words

Investment Name. The words may not fit, but this will change later.

Create next column heading

Move to cell B1, type **# of**

Move to cell B2, type **Shares.**

Create next column heading

Move to cell C1 with arrow keys

In cell C1, type **Original.**

Move with arrow keys to cell C2.

Type **Cost.**

Create next column heading

Move to cell D1

Type **Current**

Move to cell D2

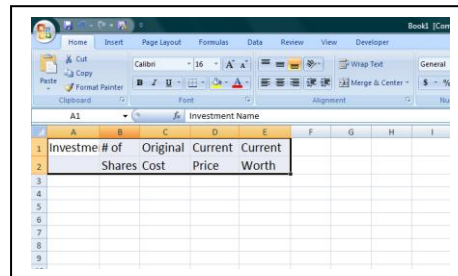
Type **Price**

Create next column heading

Move to cell E1

In cell E1, type **Current**

Move to cell E2, type **Worth**

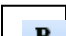


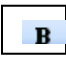
Bold-face column headings and format columns

Highlight the column headings by moving to cell A1.

Press and Hold down the shift key

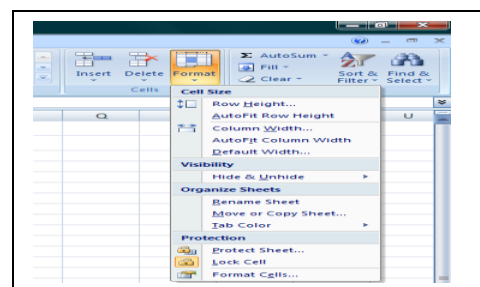
While holding down the shift key, press the right arrow key across and down.

Click on the  B, then click in Cell A1

While in cell  A1, click on **Format** on the menu line

Click on **Column**

Click on **AutoFit Selection.**



Move to cell A3 and type the following information in the correct column.

Investment Name	# of Shares	Original Cost	Current Price
Avon Products	100	58.83	83.85
Cisco System	50	71.26	21.96
Intel Corp	100	14.77	27.57
Motorola	442	17.61	18.85

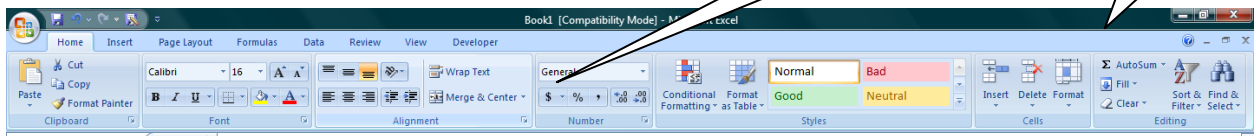
Move to cell A13, type **Totals**

Create Formulas

Move to cell E3

Type **=B3*D3**, press enter

Click on the dollar sign found on the toolbar



Copy formula

Highlight from cell E3 to E6

Press **CTRL D**

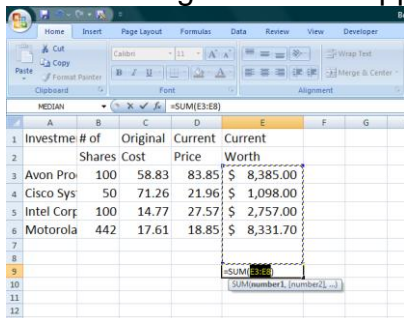
If ##### appears in the space, this indicates that the cell is not large enough. To adjust the column width, click on **Format**, click on **Column**, click on **AutoFit Selection**.

Create sum formula

Move to cell E13

Click on the  Autosum

The following screen will appear:




Press enter and the total of column E should appear

Save the worksheet

Click on 

Type **Invest** in the filename box.
Press enter.

Print Worksheet

Click on  on the menu line.

Click on Print

Click on Print in the next column

Click OK

