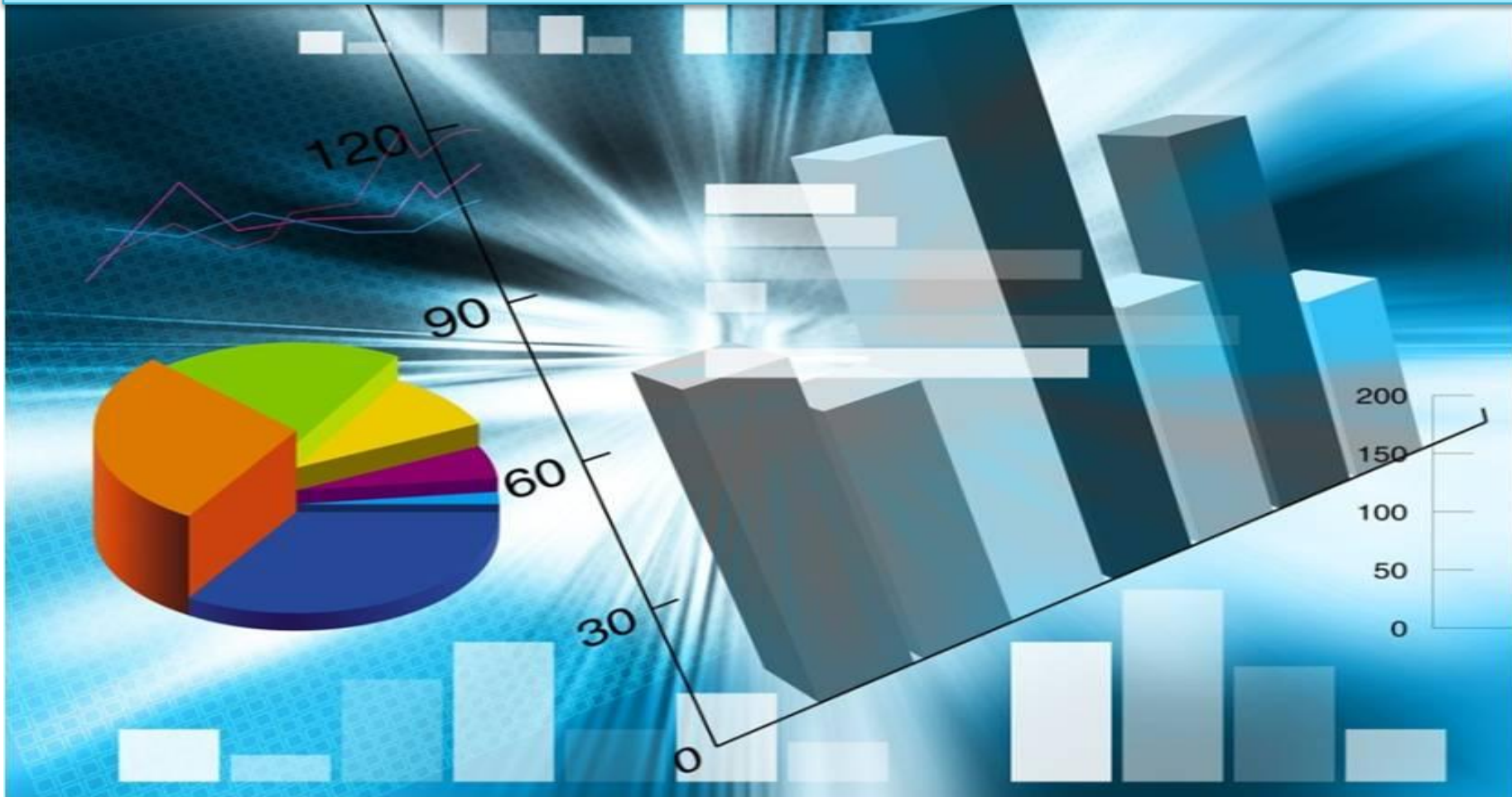


# Putting the puzzle together:

**A state and national perspective:**

**Understanding Illinois' role in driving data for the  
National Reporting System**



## What we want to provide in this overview...

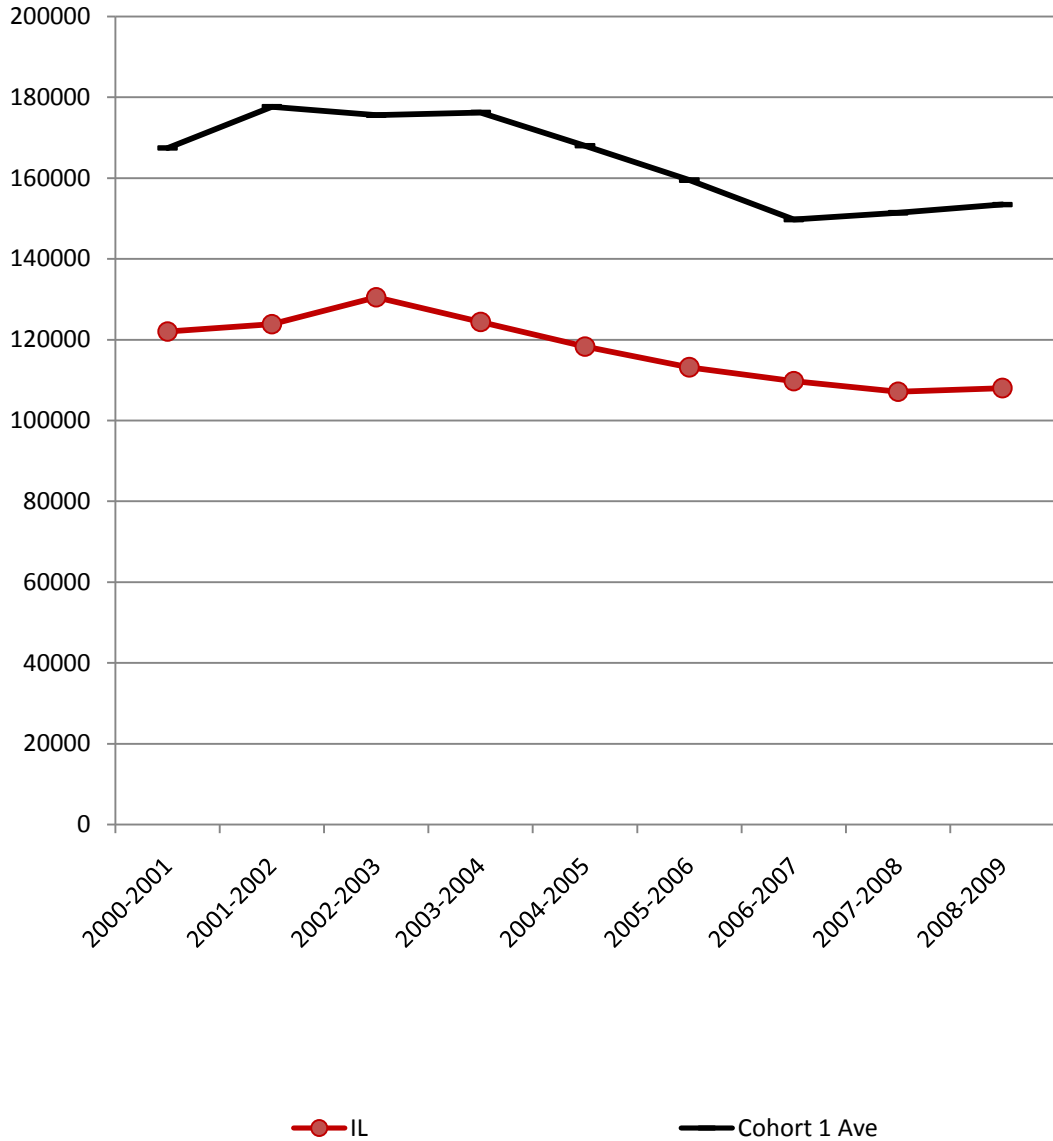
- ➔ **Understanding the role Illinois plays in the National Reporting System (NRS) based on our historical service and performance**
- ➔ **Examine state patterns regarding enrollment, post-testing and level completion rates**
- ➔ **Provide context for the session breakouts centered on local program outcomes**

## A quick reminder re: NRS...

- ➔ **A student is included in the NRS outcomes if...**
  - ➔ **the student earns at least 12 attendance hours prior to leaving the program**
    - ➔ **If in a fixed entry class, the student must also successfully reach the midterm point to be claimable**
  - ➔ **is not a VOC only or Foreign Language GED student**
  - ➔ **has been properly pre-tested**
  - ➔ **has selected a Primary Goal**
  - ➔ **and is free from all errors as determined by DAISI's error checking system**

**A snapshot of**  
**Total Enrollment patterns**  
**for the National Reporting**  
**System by Cohort**

# Total Enrollment, PY 2000-01 through PY 2008-09



## Our Cohort included...

California

Florida

New York

North Carolina

**Illinois**

Texas

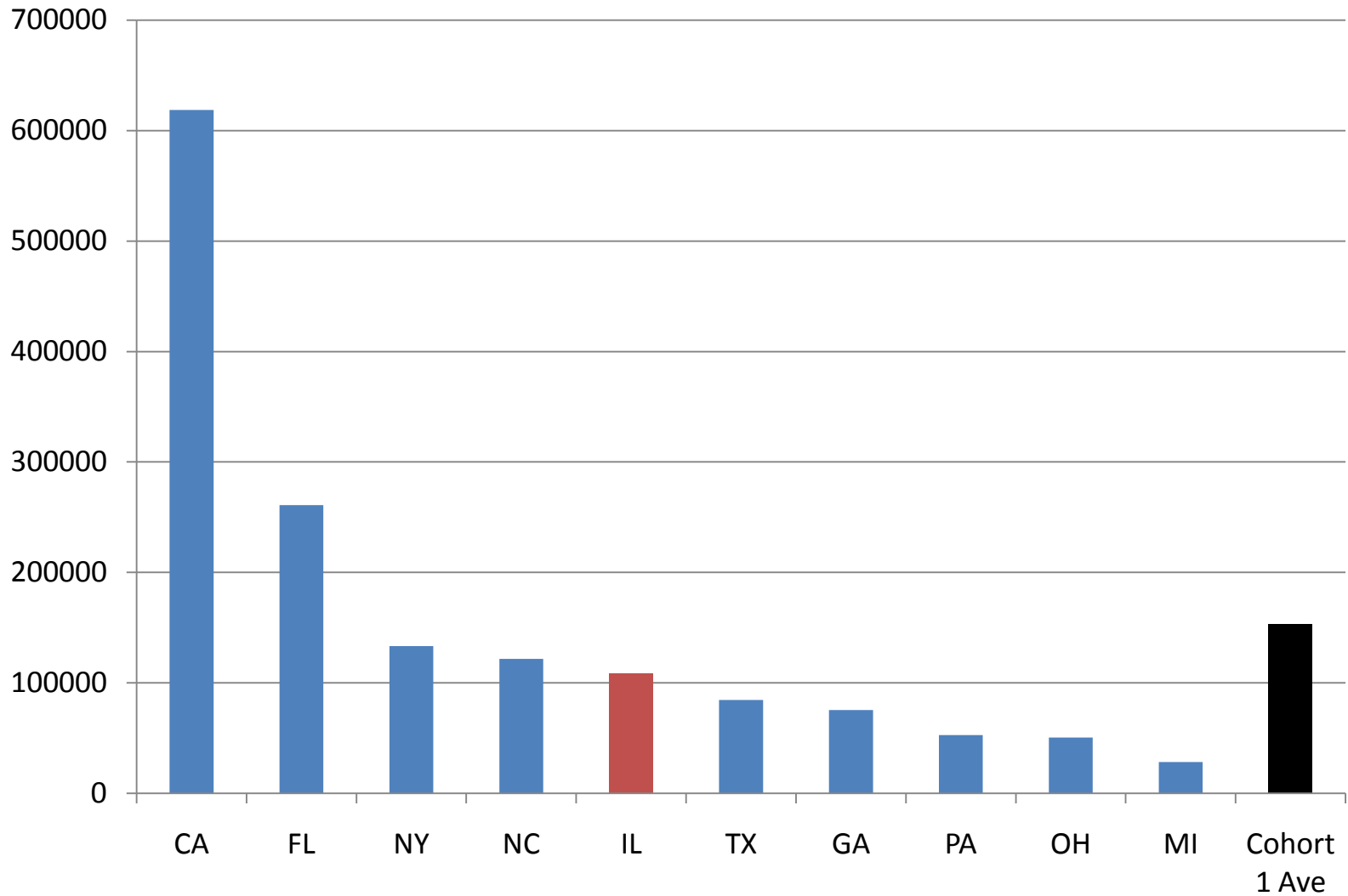
Georgia

Pennsylvania

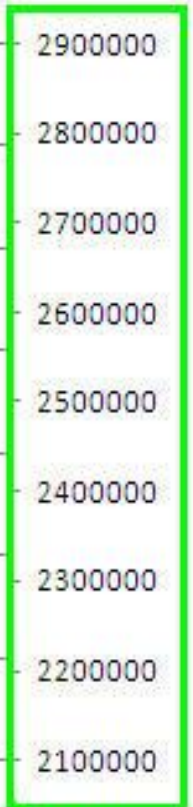
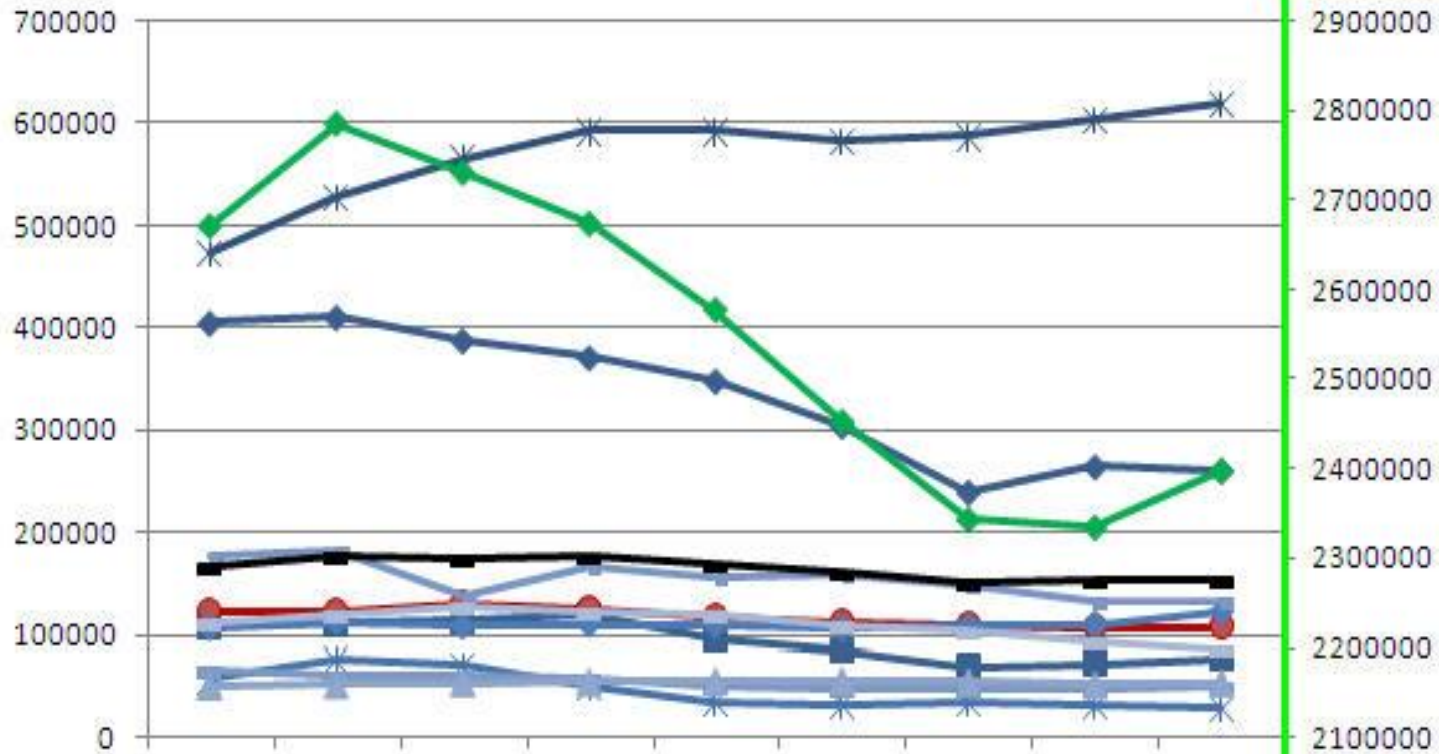
Ohio

Michigan

# Total Student Enrollment, PY 2008-09

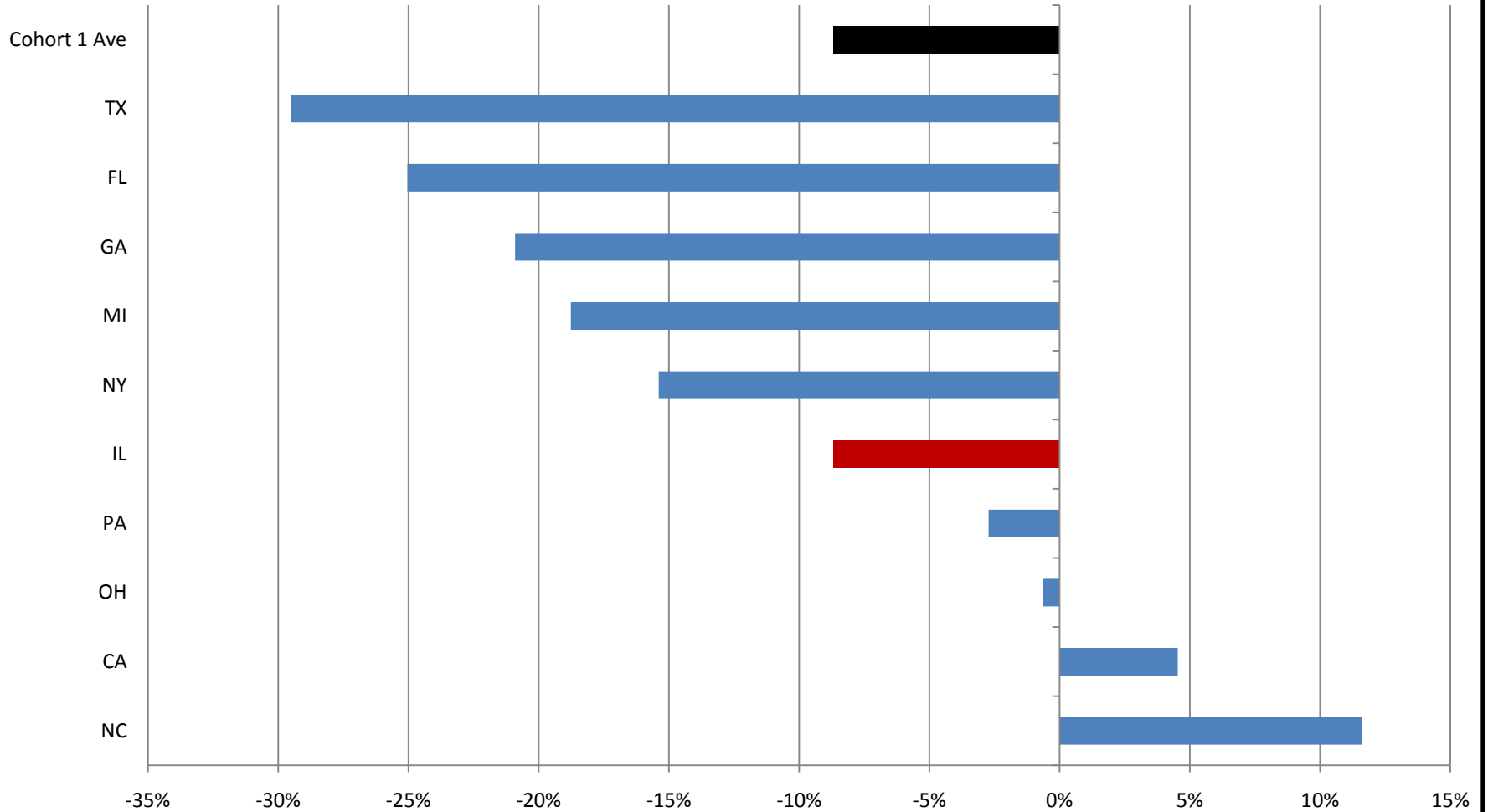


**Total Enrollment, PY 2000-01 through PY 2008-09**



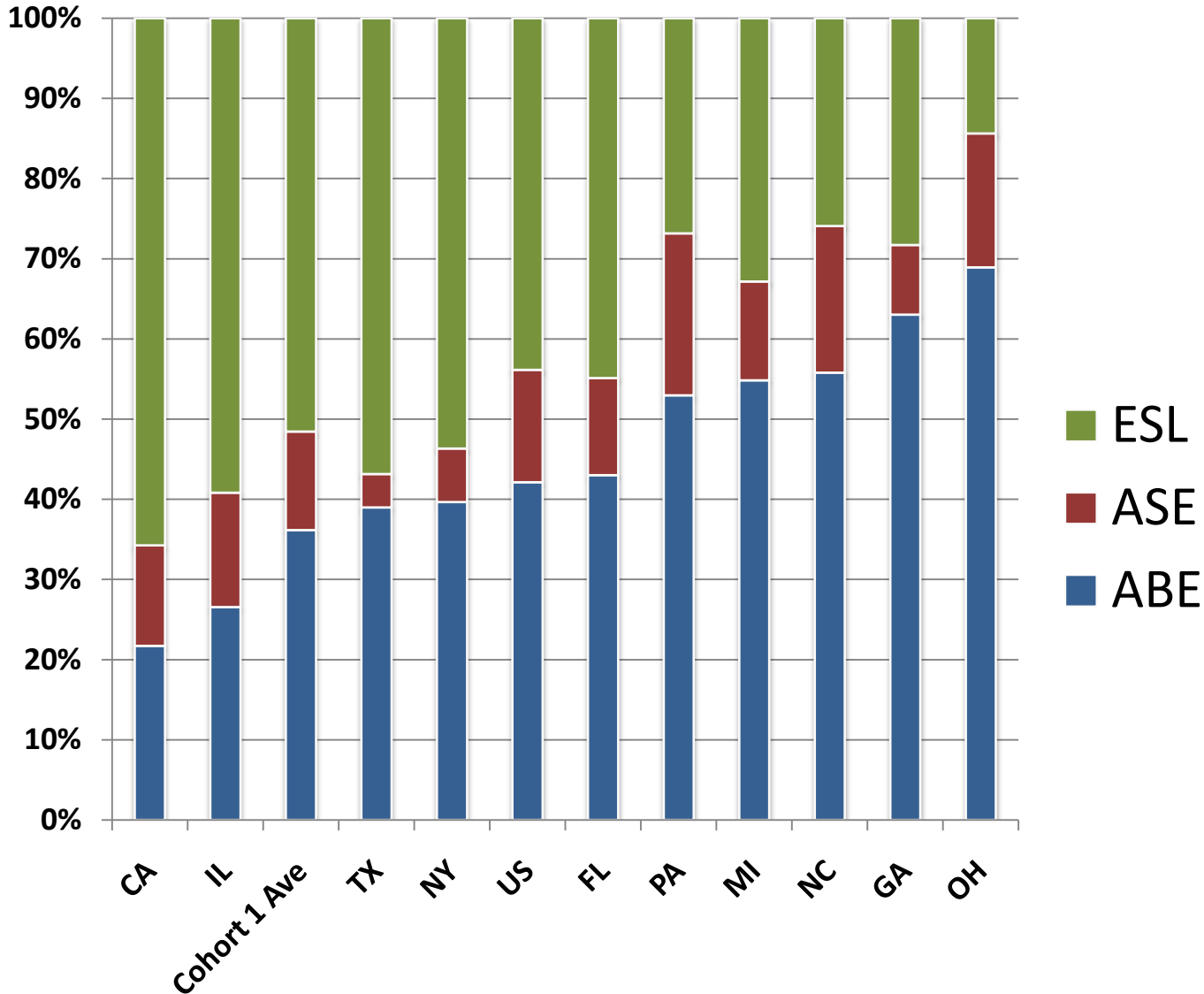
**Use this axis for US totals**

# Percent Change in Enrollment 2004-05 to 2008-09





## Percent of Total Enrollment by Type (ABE, ASE, ESL) PY 2008-09



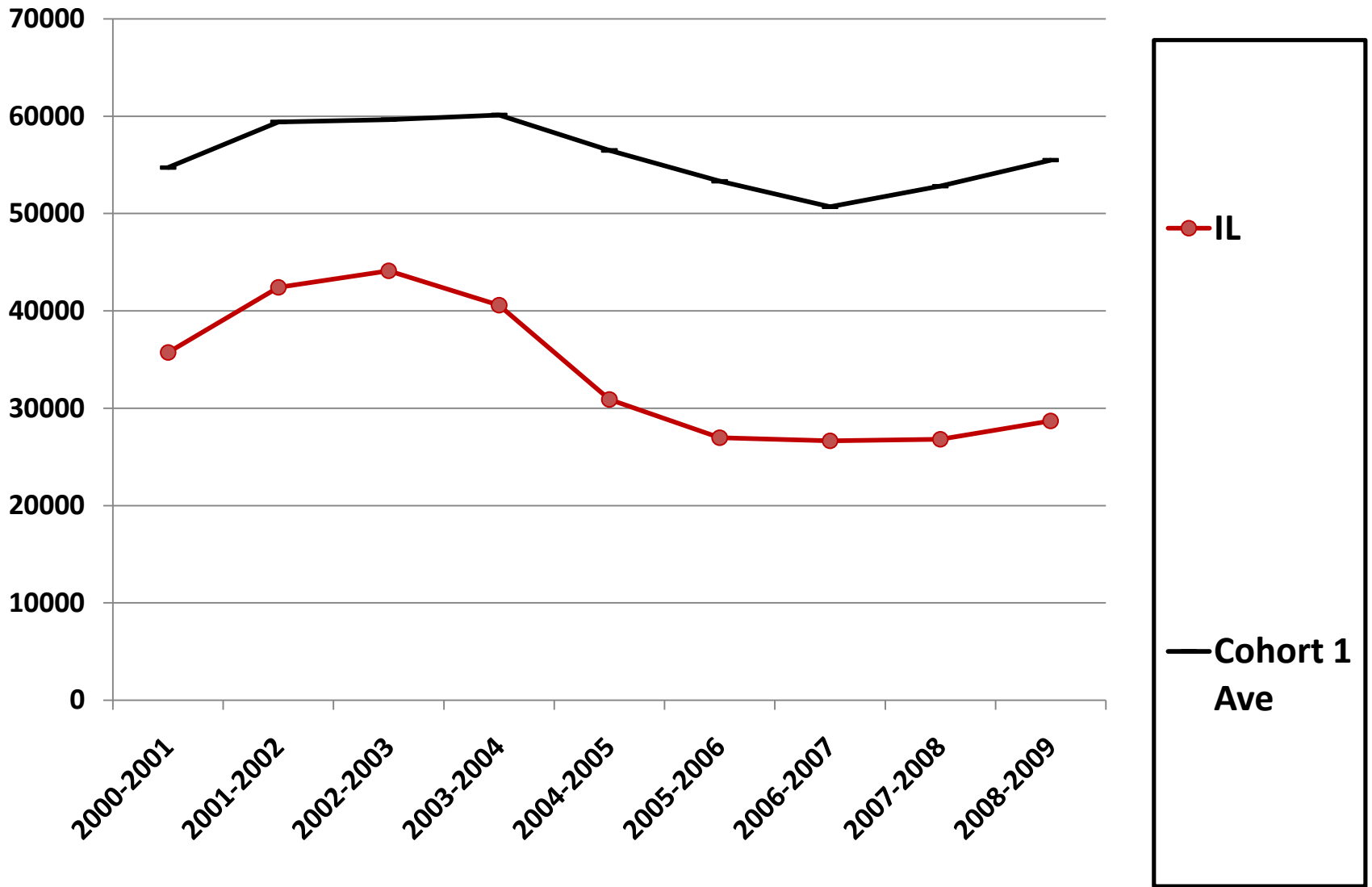
**Placement**  
**based on**  
**student**  
**pre-test**  
**level.**

**Includes**  
**HSCR**  
**students.**

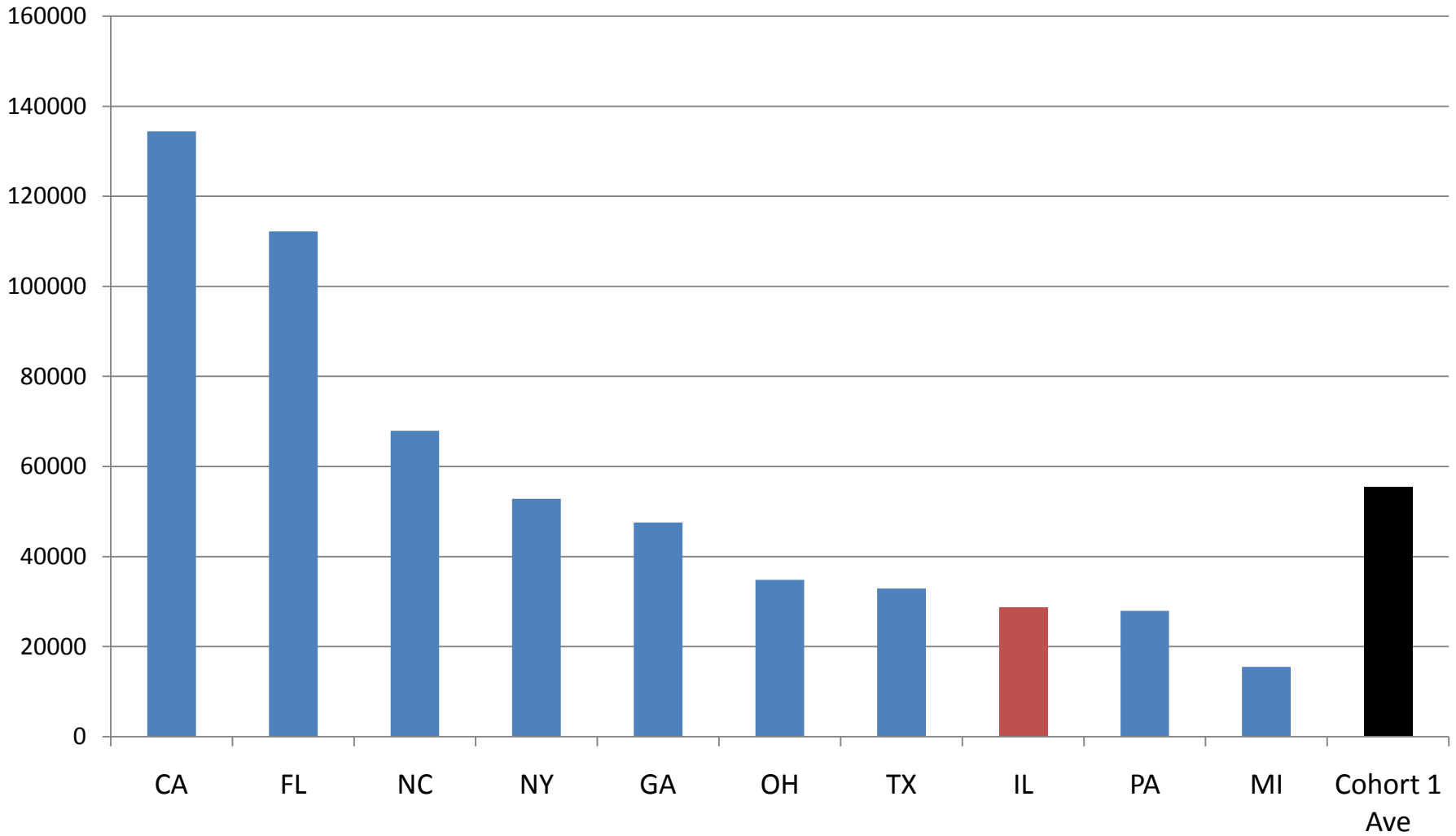
**Excludes**  
**VOC only or**  
**FL GED only**  
**students.**

**A snapshot of**  
**ABE enrollment patterns**  
**for the National Reporting**  
**System**

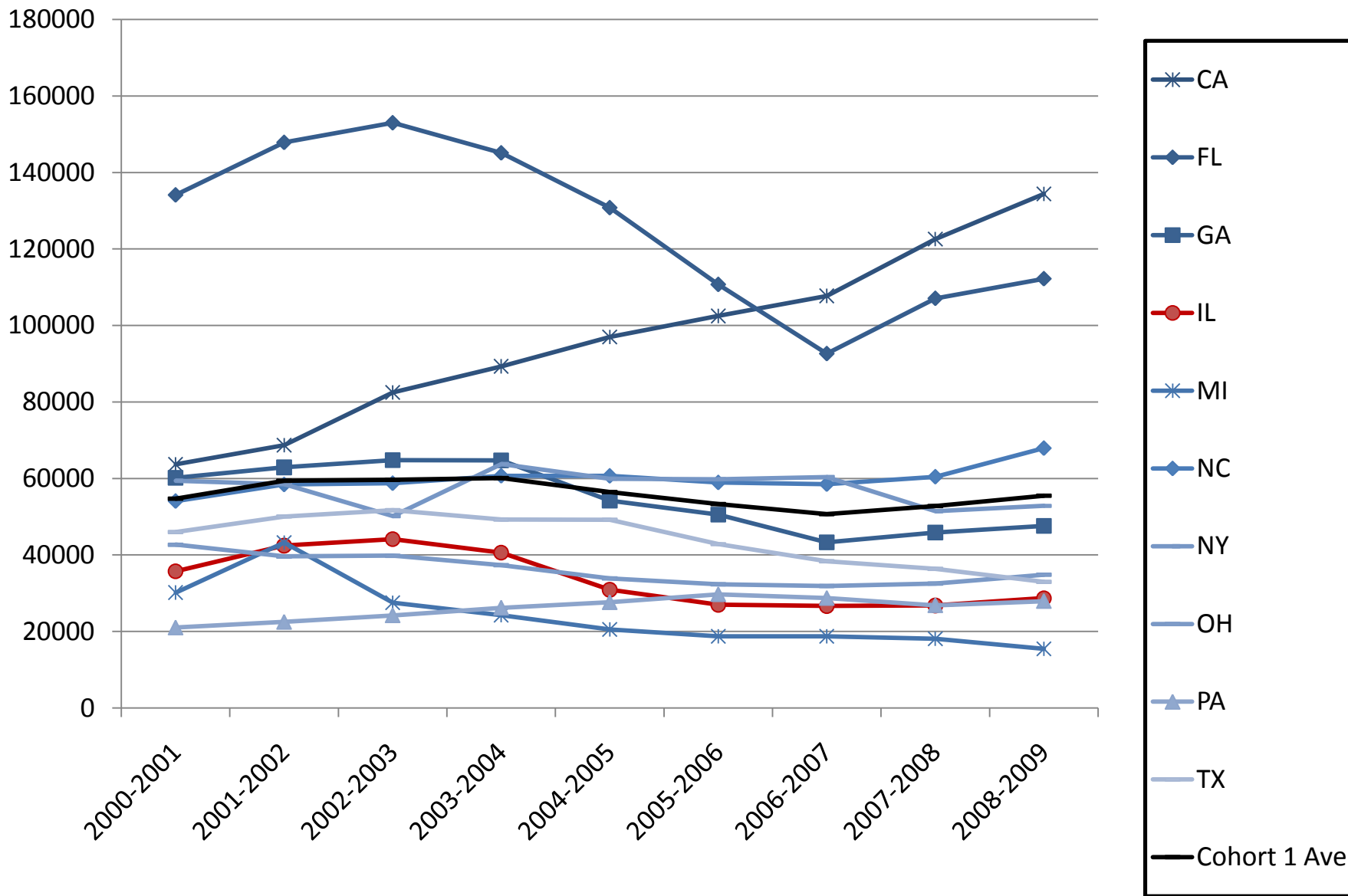
# ABE Enrollment, PY 2000-01 through PY 2008-09



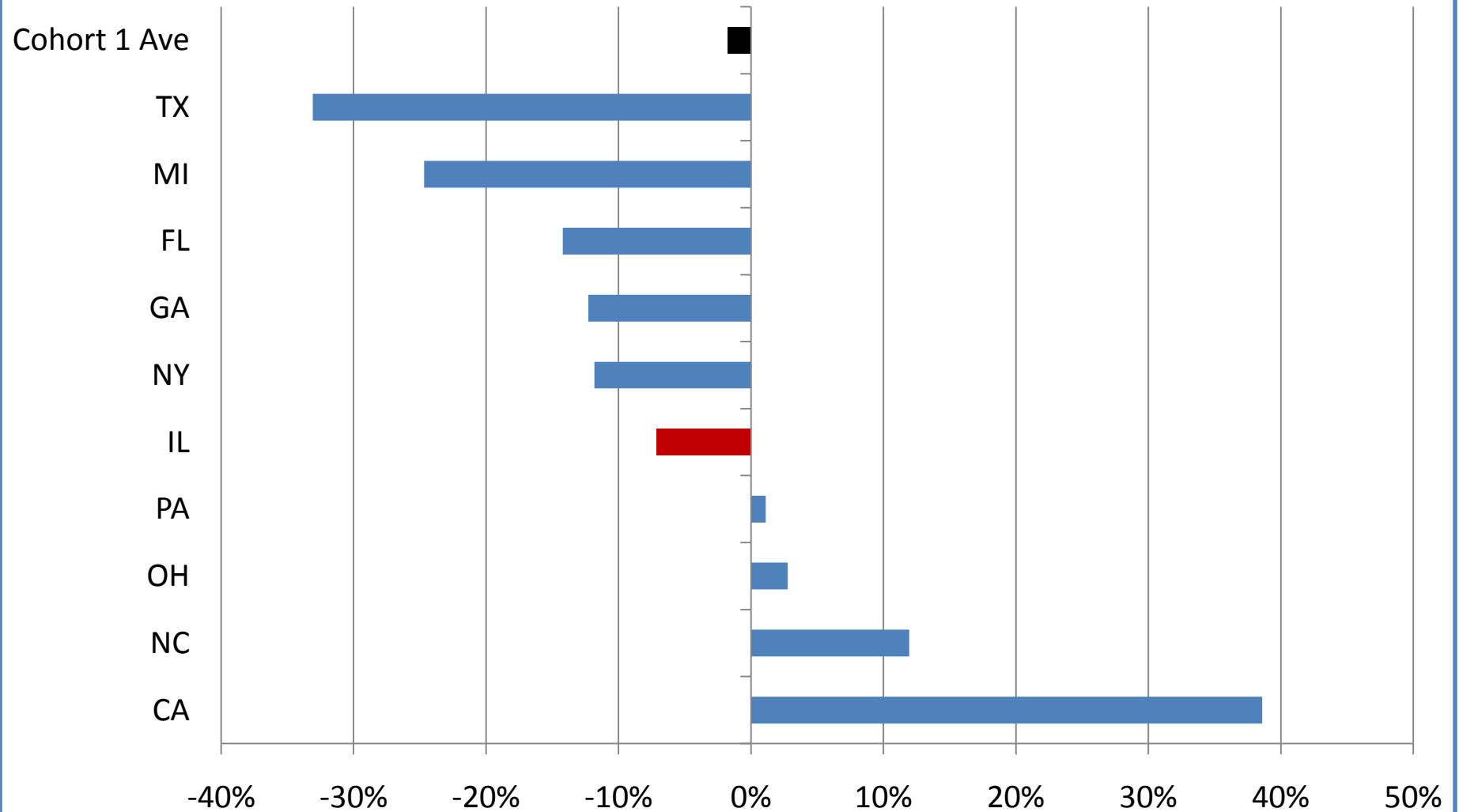
# ABE Enrollment 2008-09



# ABE Enrollment, PY 2000-01 through PY 2008-09

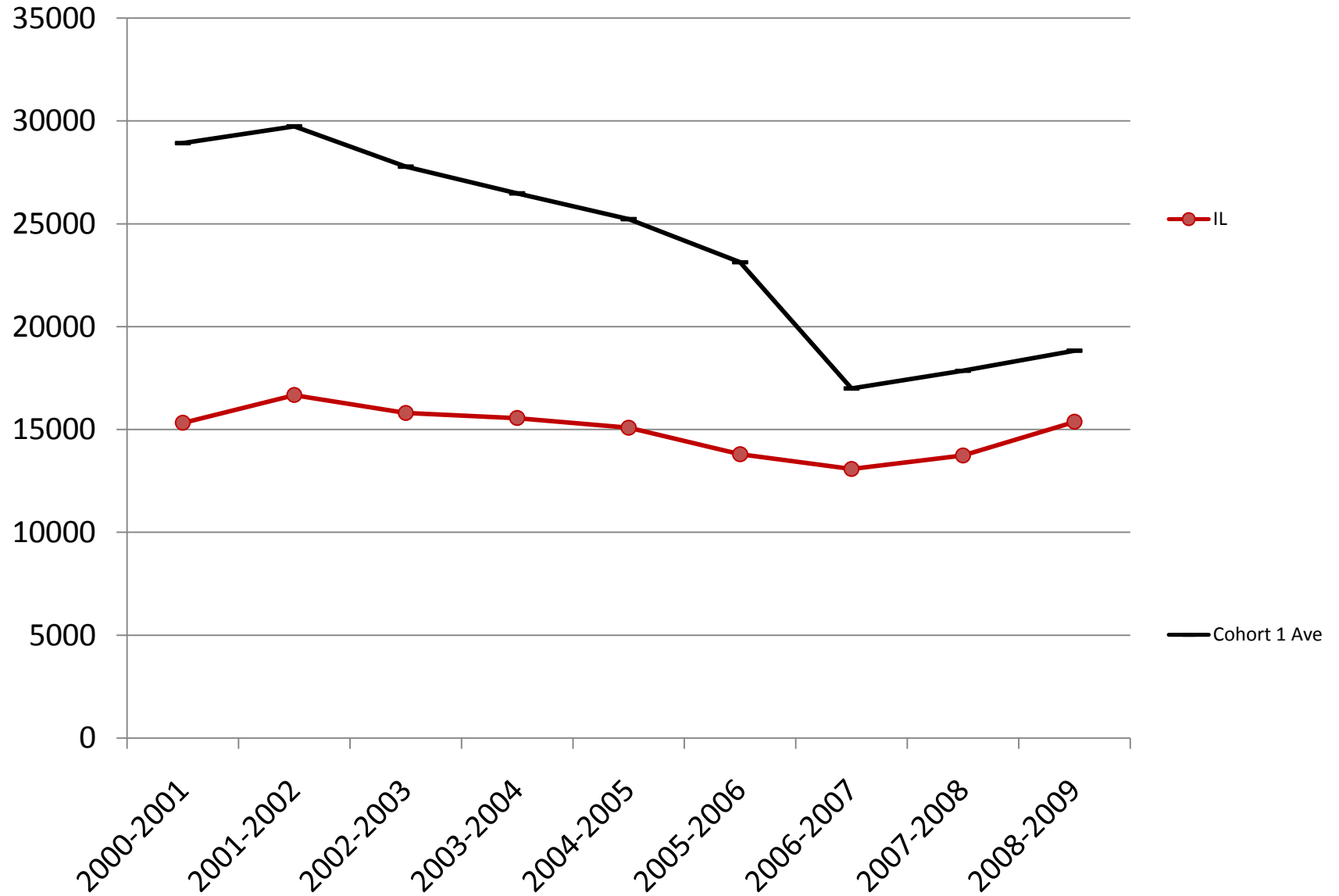


## Percentage Change in ABE Student Enrollment, PY 2004-05 to 2008-09



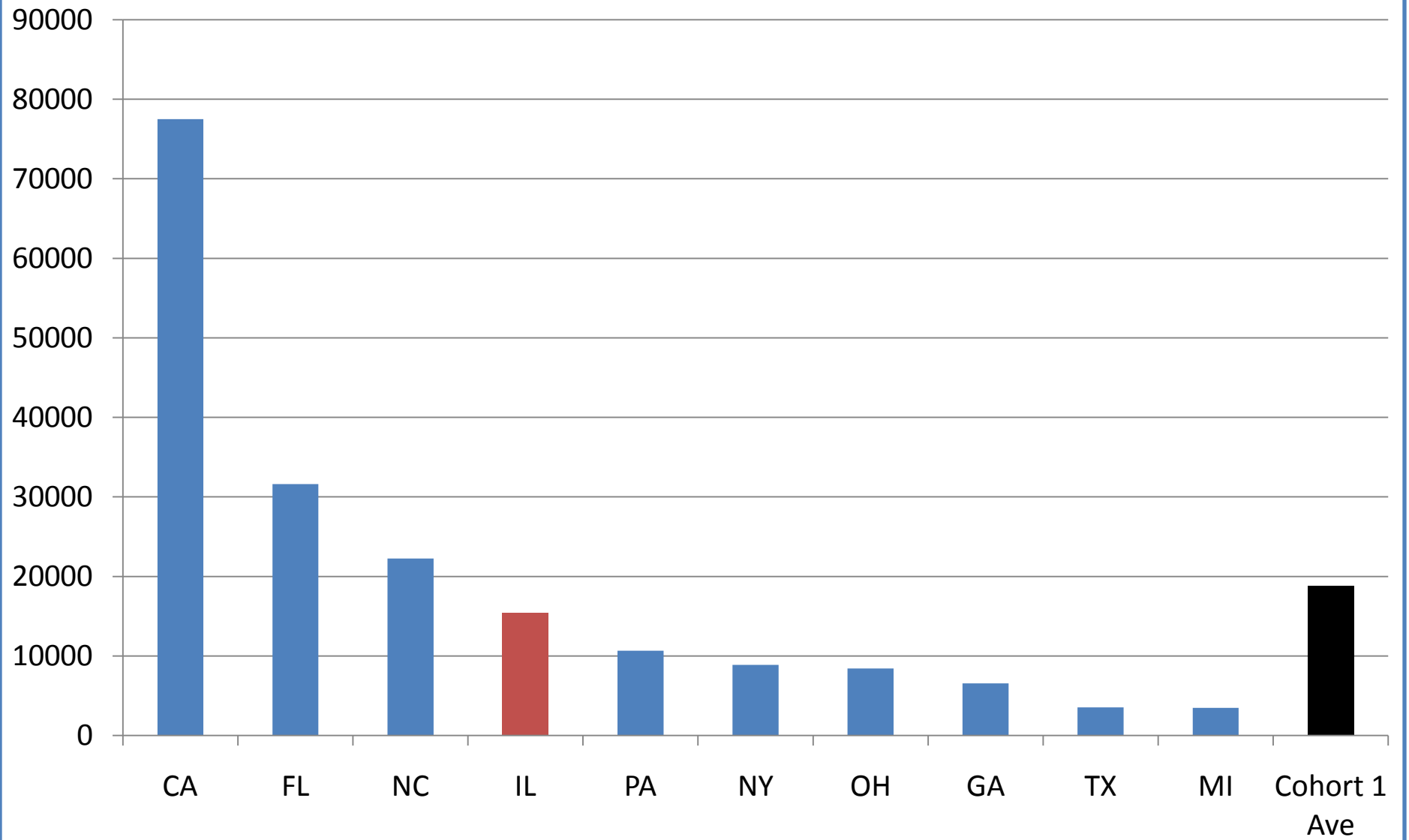
**A snapshot of**  
**ASE enrollment patterns**  
**for the National Reporting**  
**System**

ASE Enrollment, PY 2000-01 through PY 2008-09

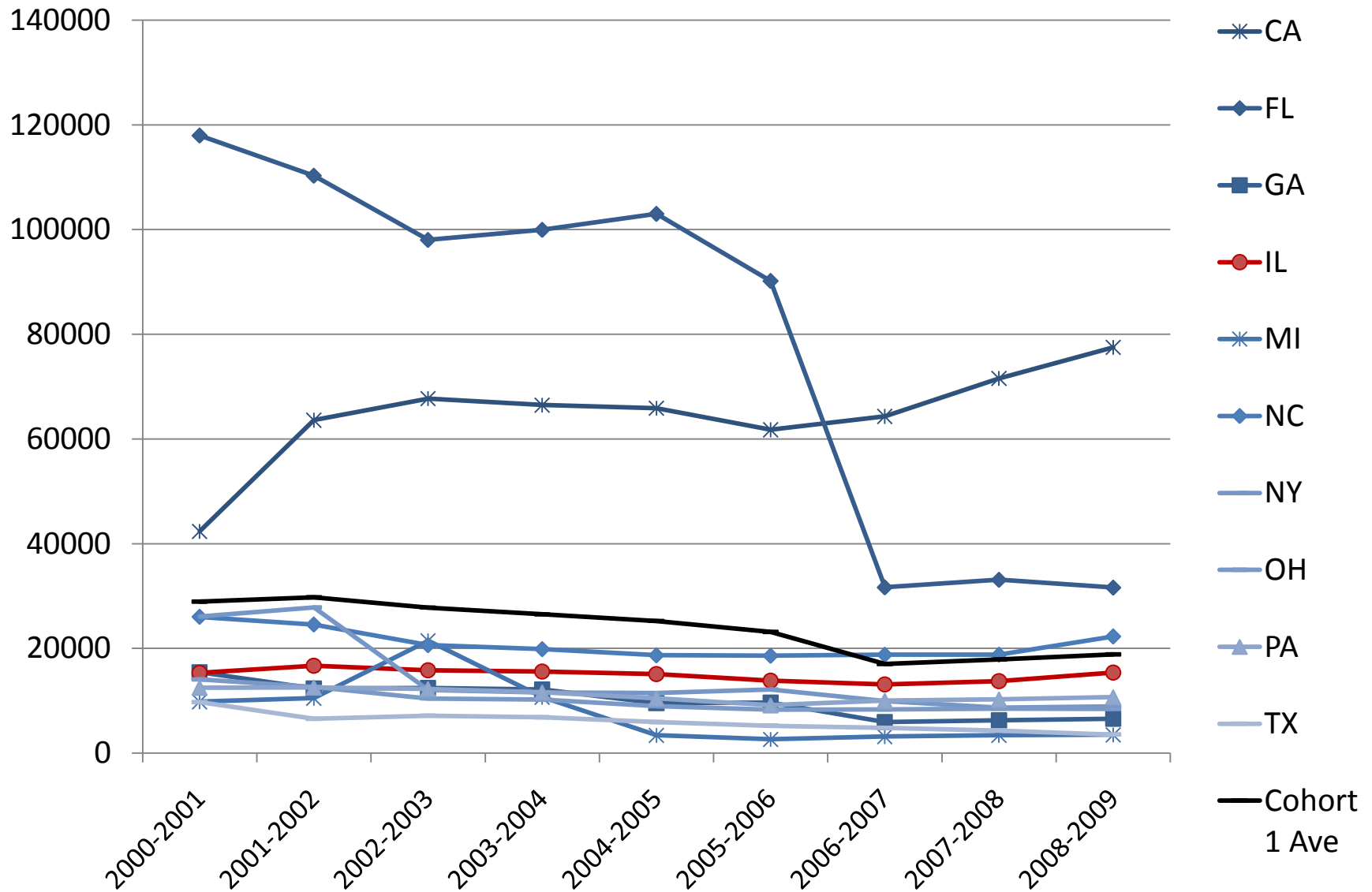




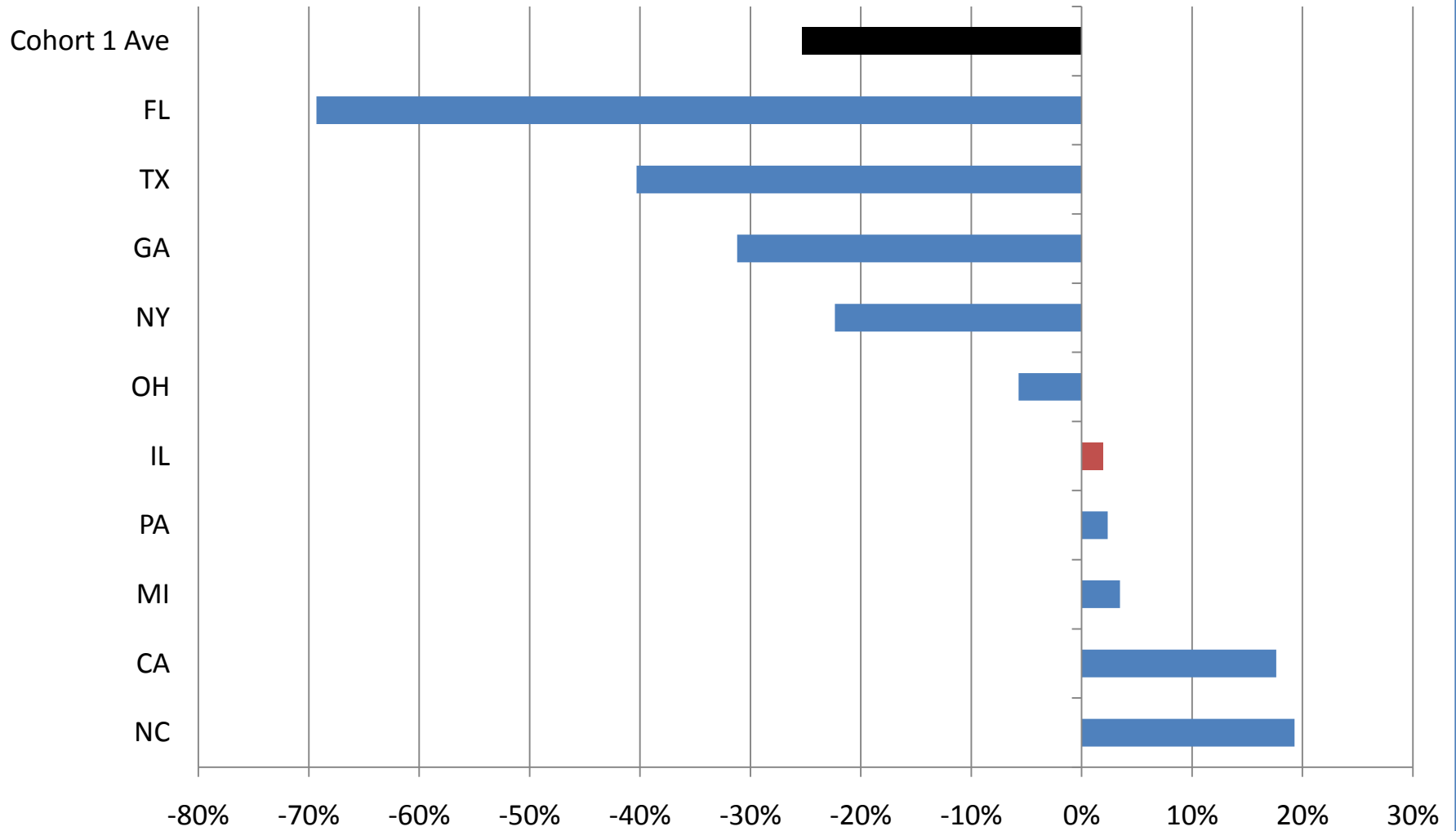
ASE Enrollment 2008-09



# ASE Enrollment, PY 2000-01 through PY 2008-09

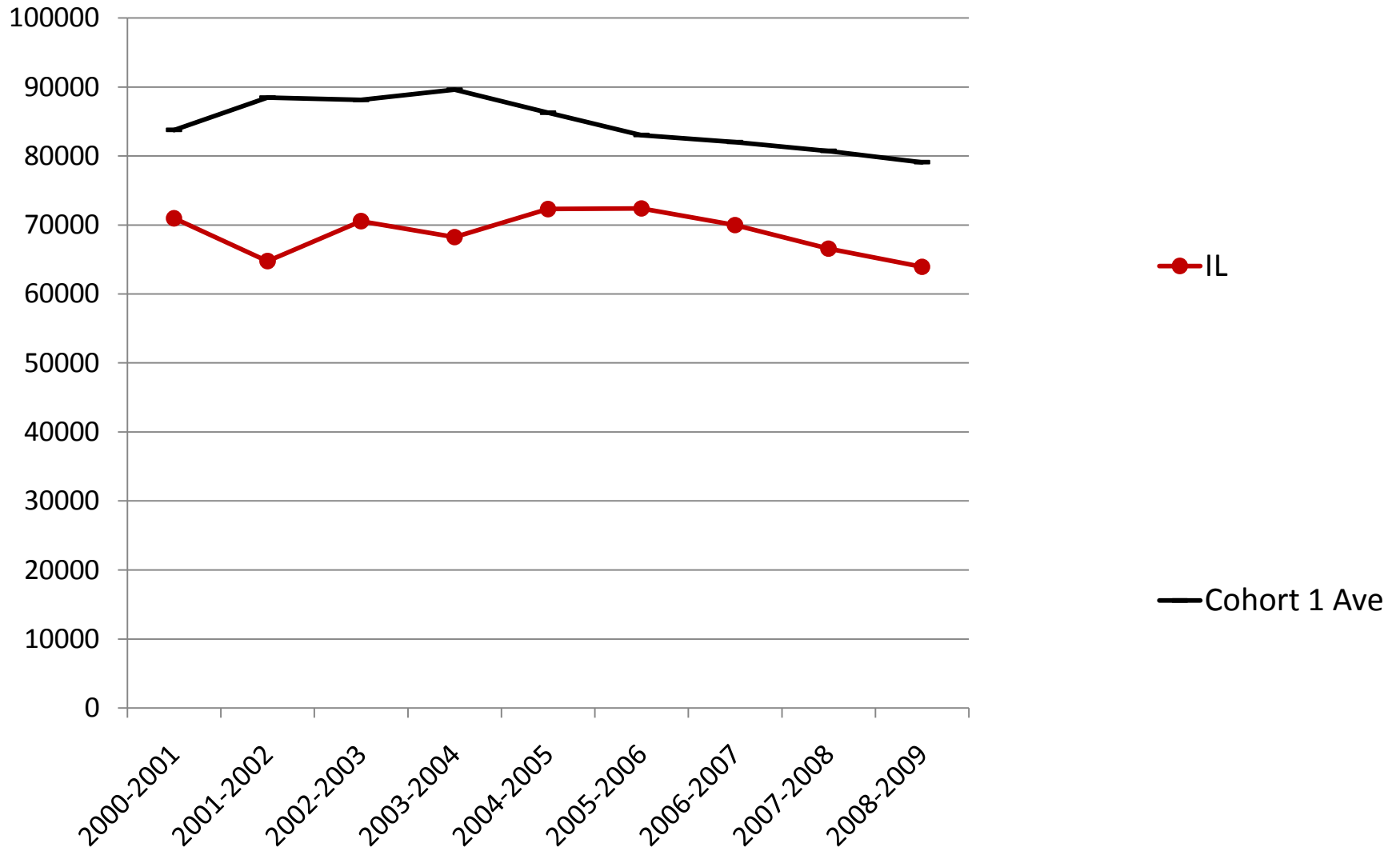


# Percentage Change in ASE Student Enrollment, PY 2004-05 to 2008-09

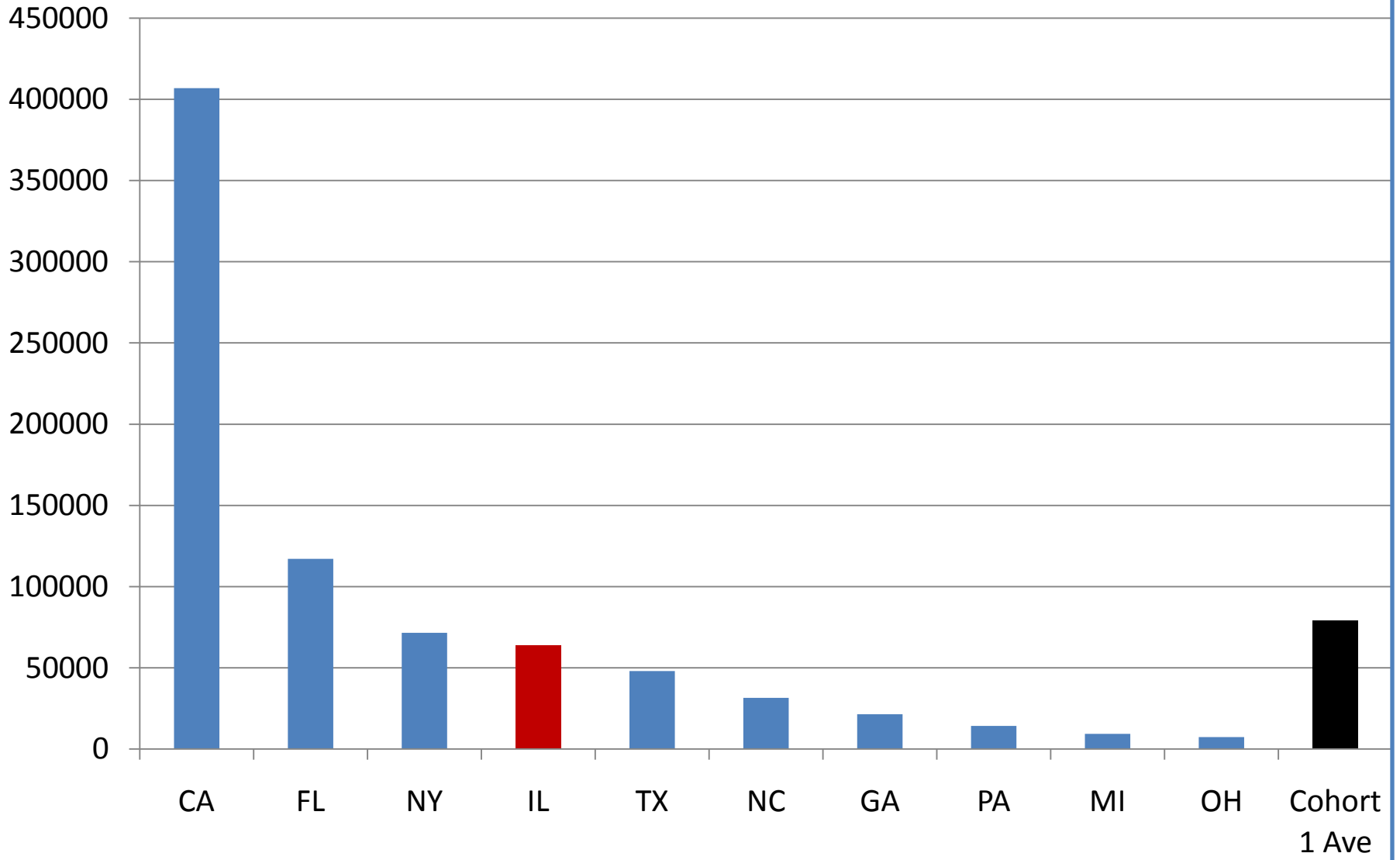


**A snapshot of**  
**ESL enrollment patterns**  
**for the National Reporting**  
**System**

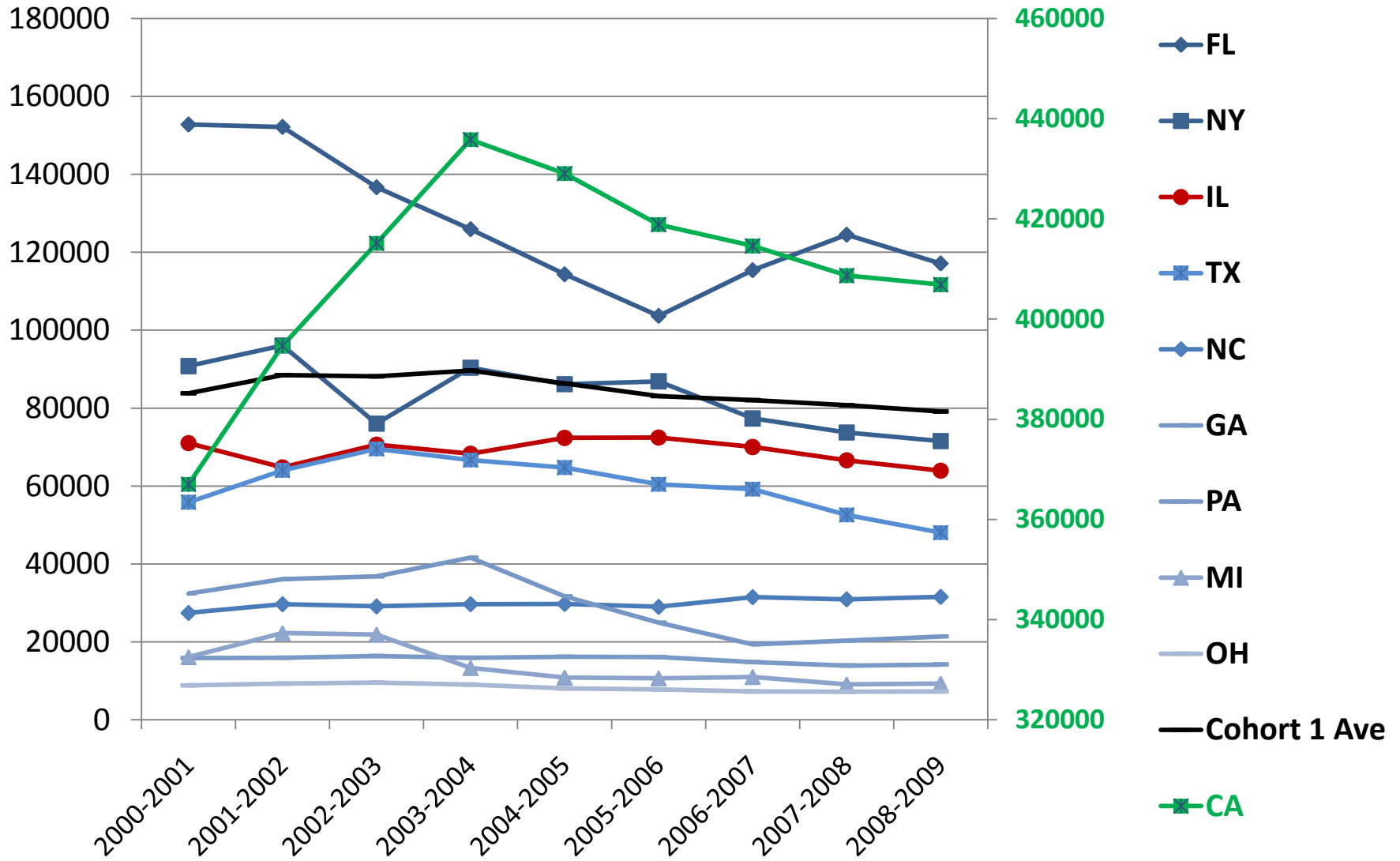
# ESL Enrollment, PY 2000-01 through PY 2008-09



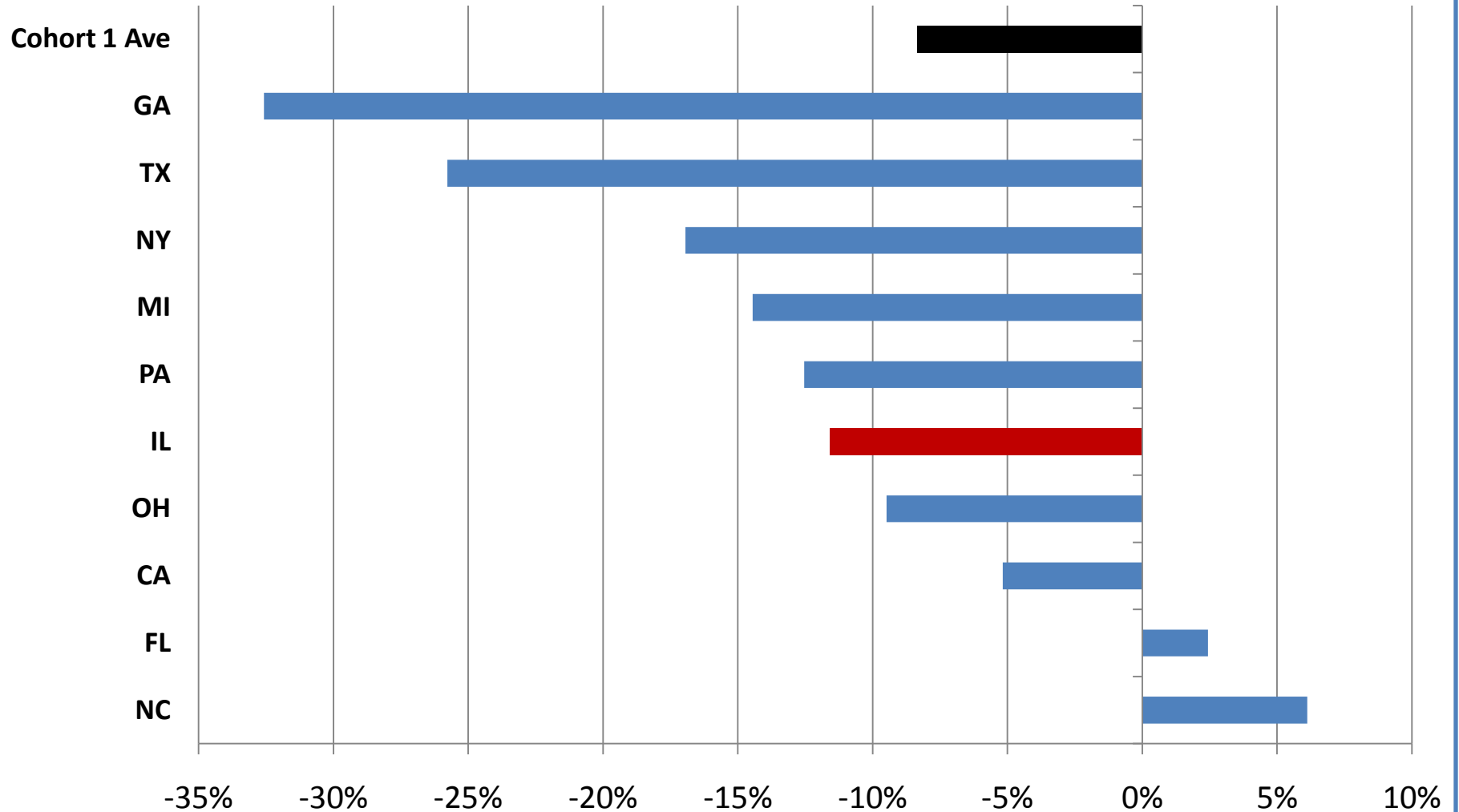
# ESL Enrollment 2008-09



# ESL Enrollment, PY 2000-01 through PY 2008-09



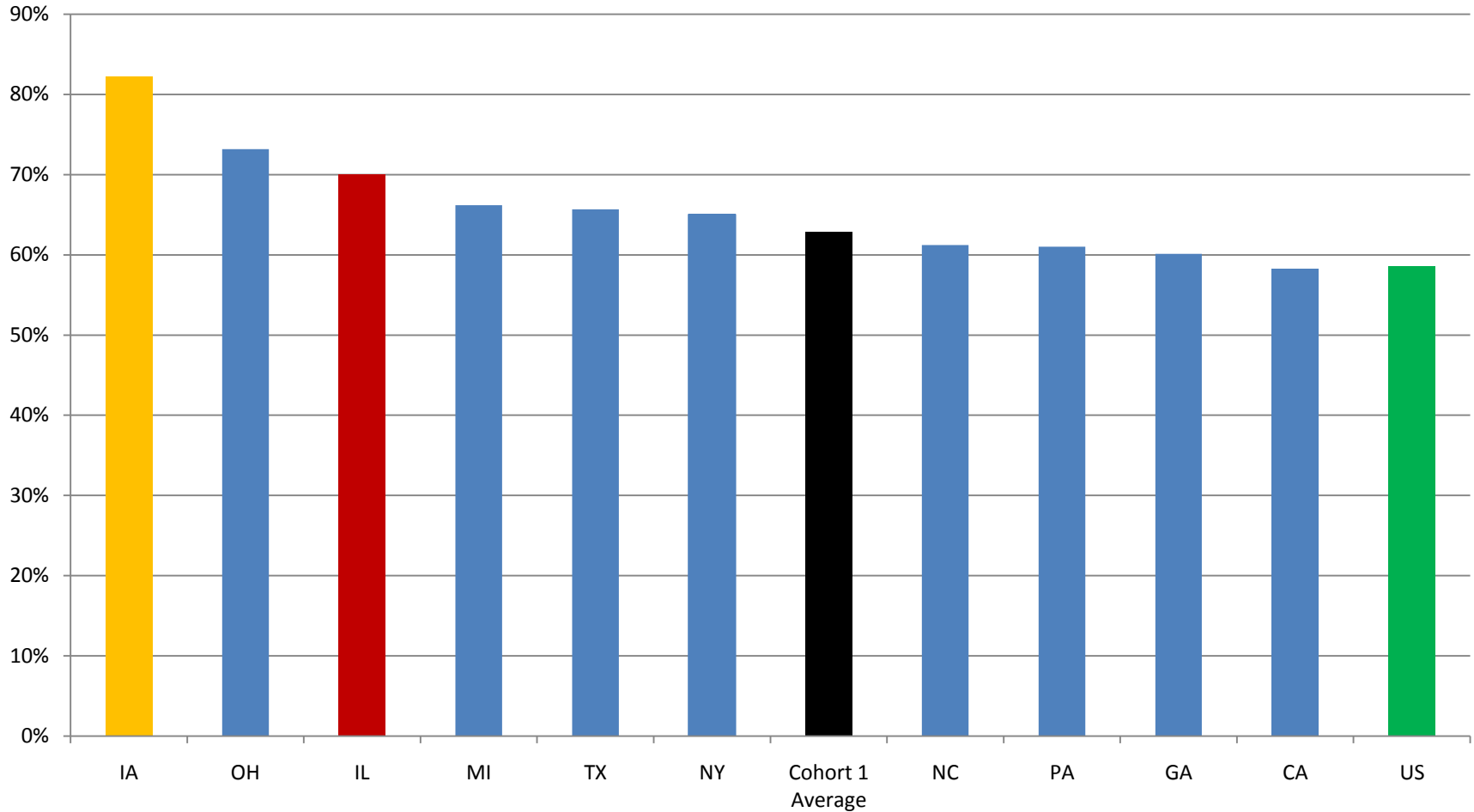
# Percentage Change in ESL Student Enrollment, PY 2004-05 to 2008-09





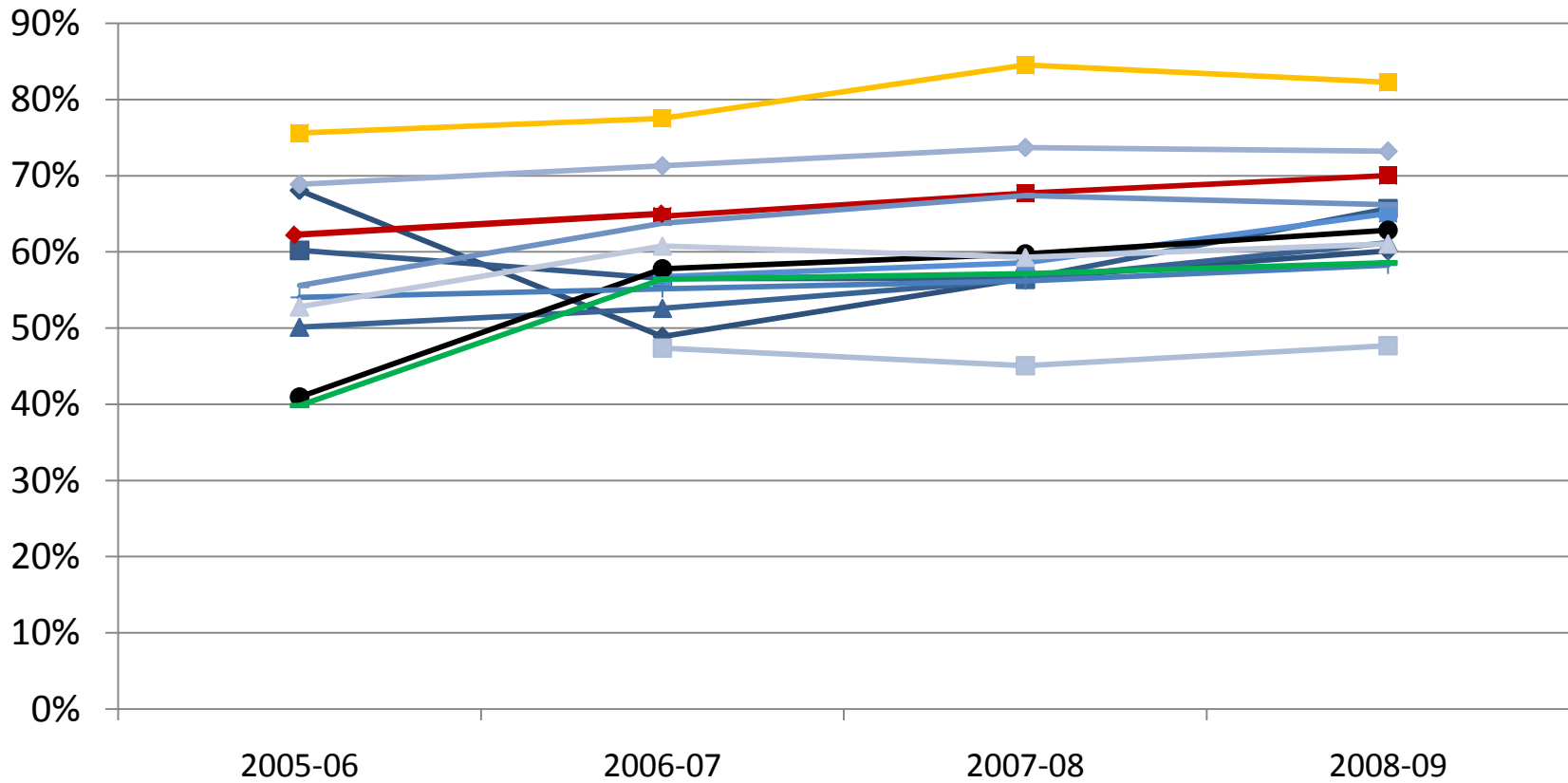
**A snapshot of**  
**Pre & Post-testing patterns**  
**for the National Reporting**  
**System**

## Percent of Students Pre and Posttested, 2008-09

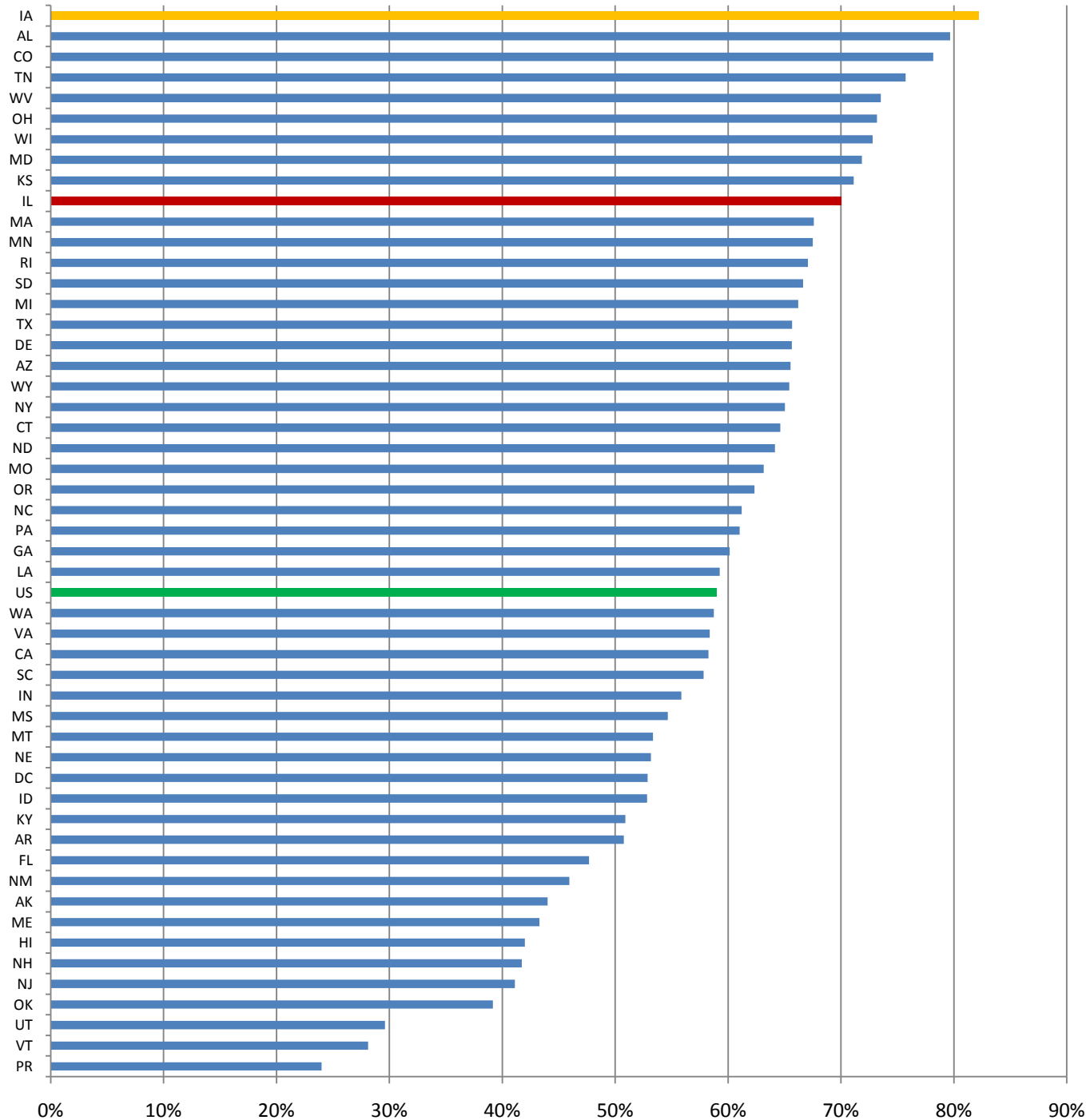


➔ **The post-test rate in Illinois, as reflected above for PY 08-09, has consistently exceeded the Cohort and US average**

## Percent of Students Pre and Posttested, PY 2005-06 through PY 2008-09



- ◆ GA
- ◆ IL
- ◆ US
- ◆ IA (benchmark)
- ◆ TX
- Cohort 1 Average
- ◆ OH
- ◆ NC
- ◆ CA
- ◆ FL
- ◆ NY
- ◆ MI
- ◆ PA



# Percent of Students Pre and Post-tested by State PY 2008-09

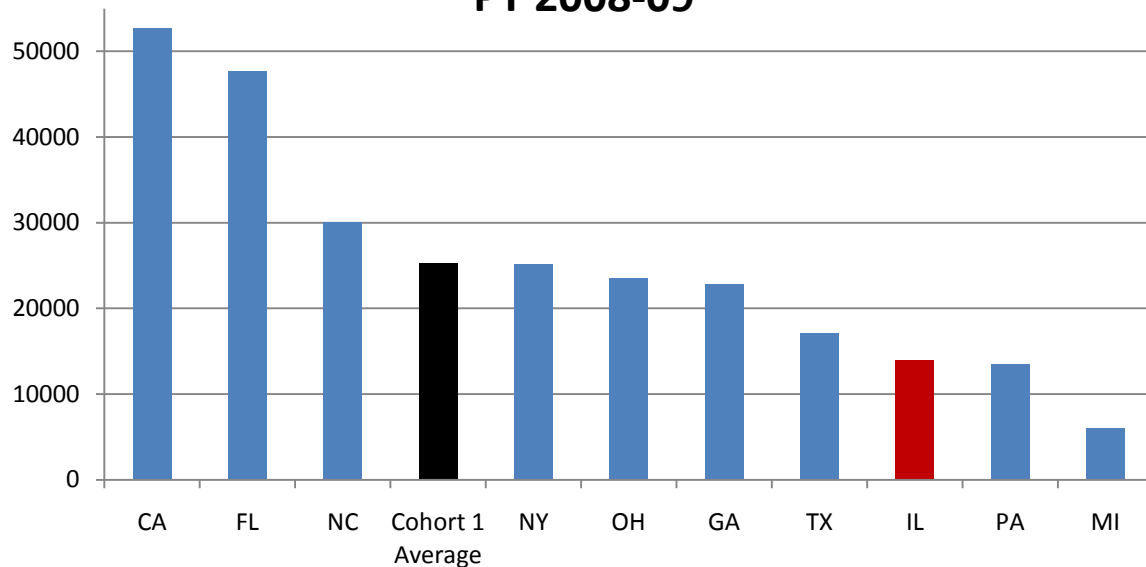
Gold = Highest (IA)

Red = Illinois

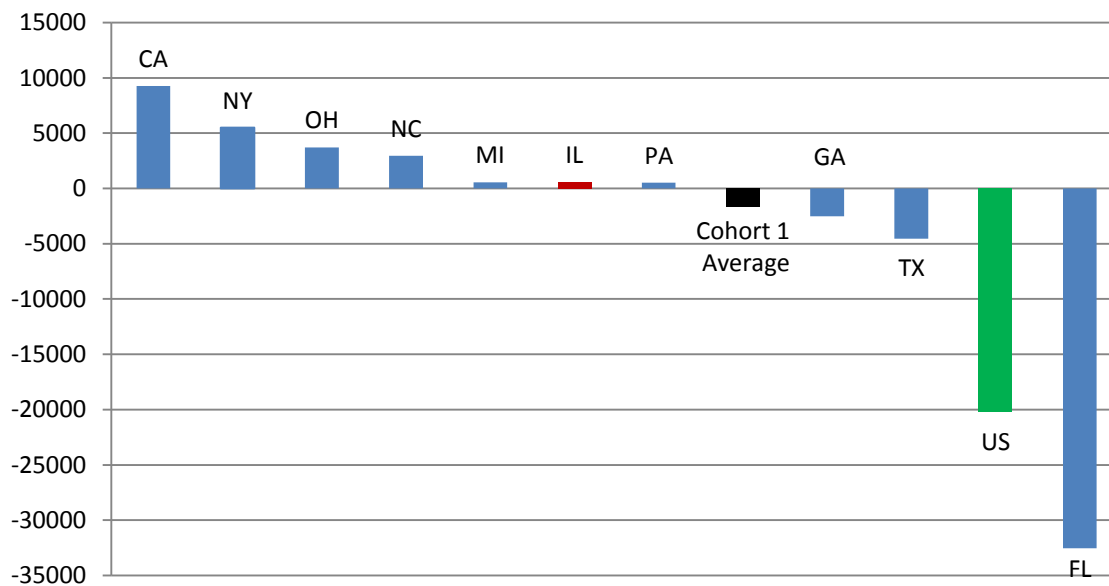
Green = US

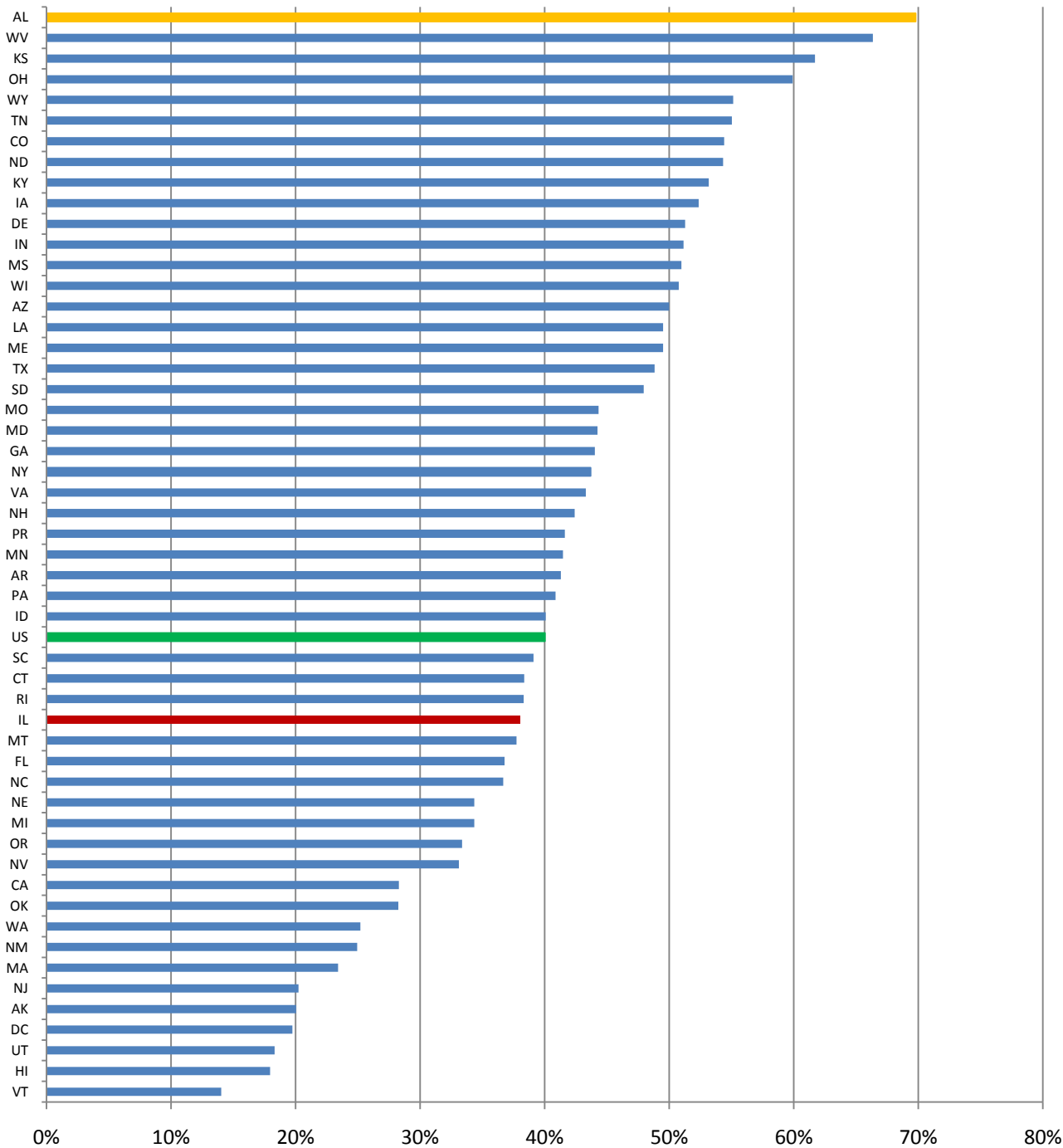
**A snapshot of**  
**Level Completion patterns**  
**for the National Reporting**  
**System**

## Number of ABE/ASE Student Completers, PY 2008-09



## Change in Number of ABE/ASE Student Completers between PY 2004-05 and PY 2008-09





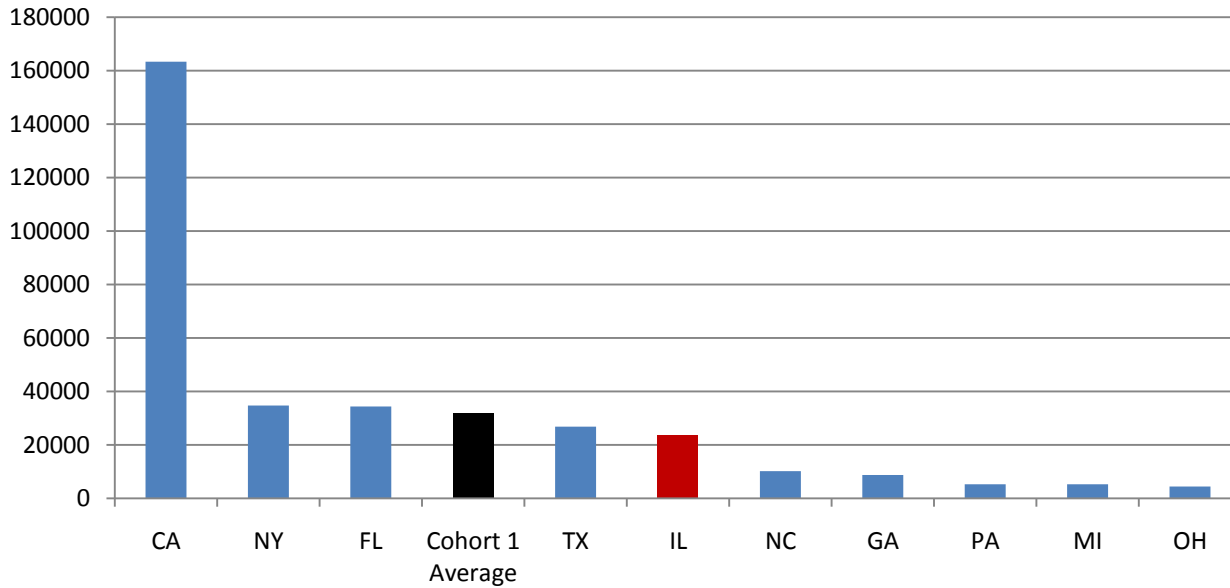
# Percent of ABE/ASE Student Completers, by State, PY 2008-09

Gold =  
Highest (AL)

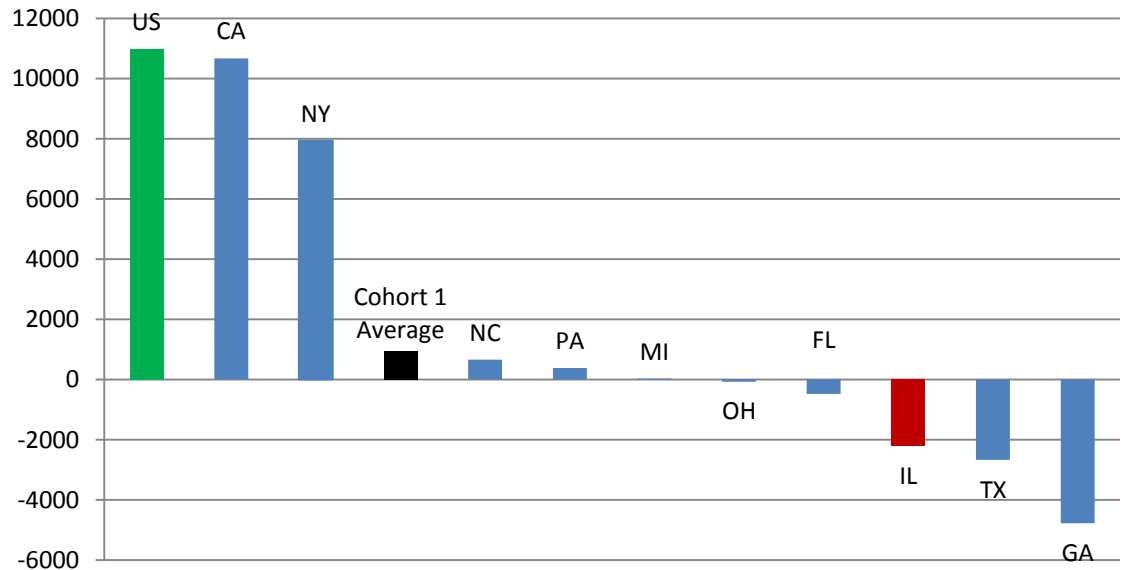
Red =  
Illinois

Green =  
US

# Number of ESL Student Completers, PY 2008-09

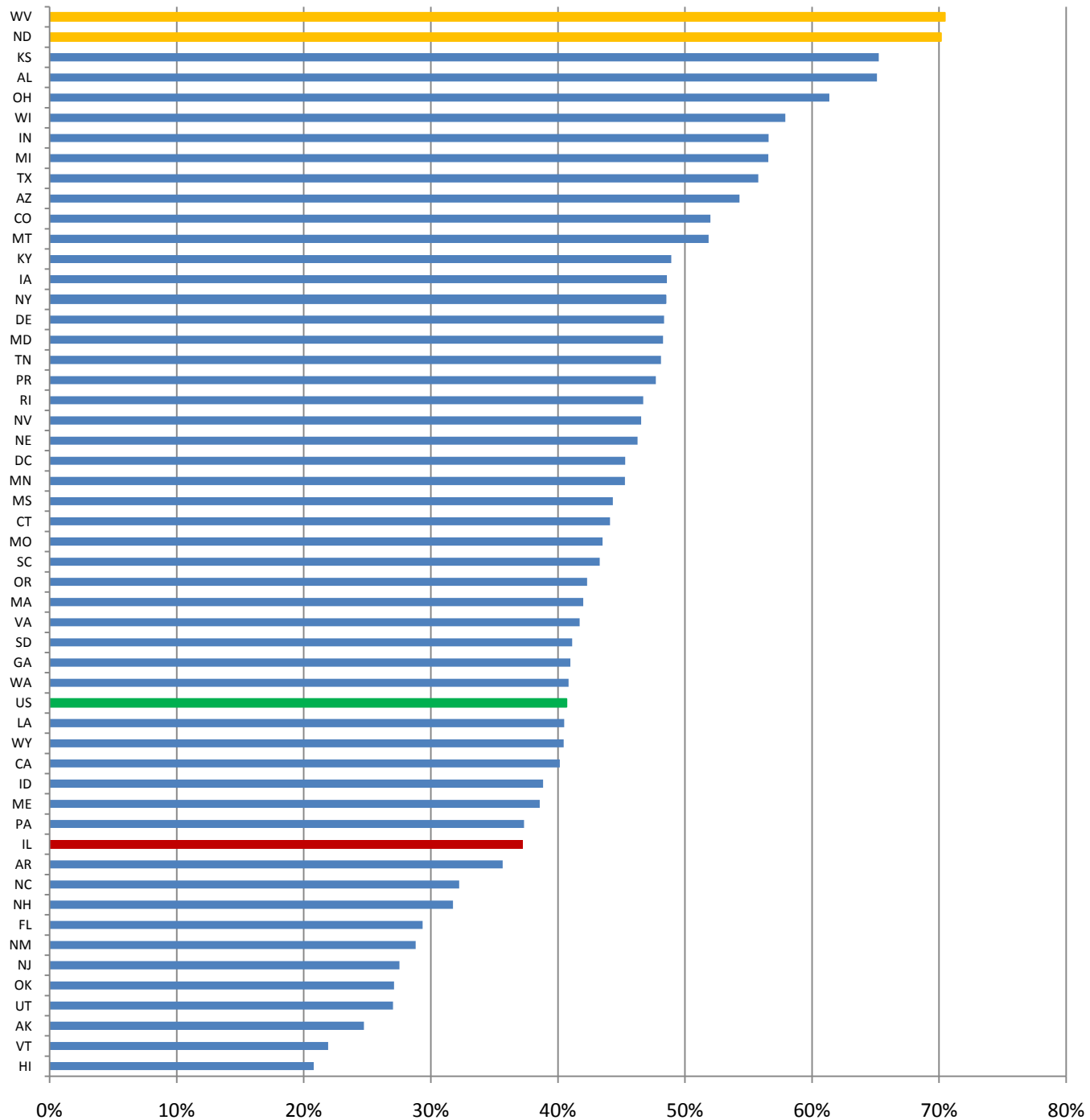


# Change in Number of ESL Student Completers between PY 2004-05 and PY 2008-09





# Percent of ESL Student Completers, by State, PY 2008-09



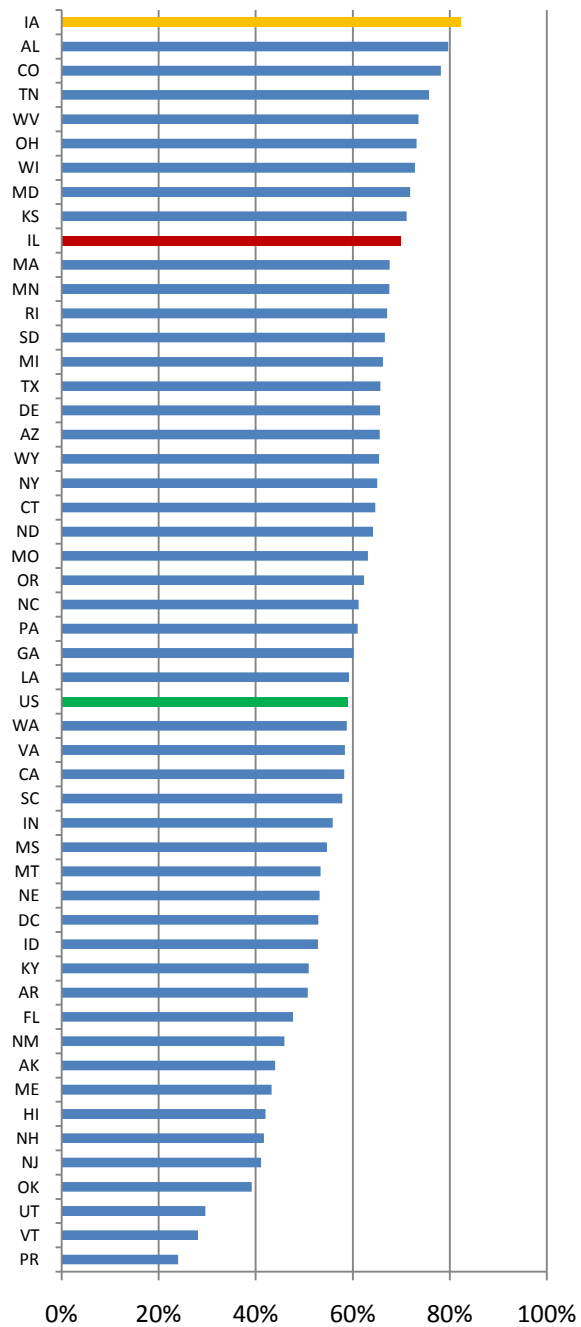
Gold =  
Highest (WV  
& ND)

Red =  
Illinois

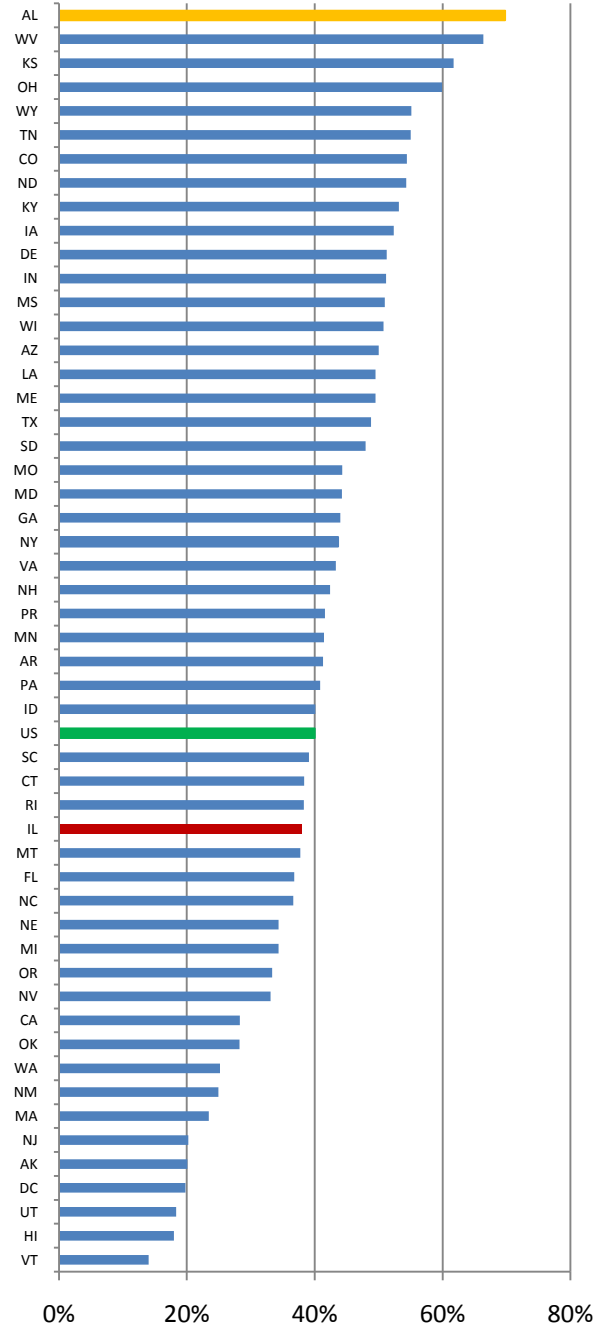
Green =  
US

**So where does Illinois stand  
when looking at post-testing  
versus level completion rates  
in PY 2008-2009?**

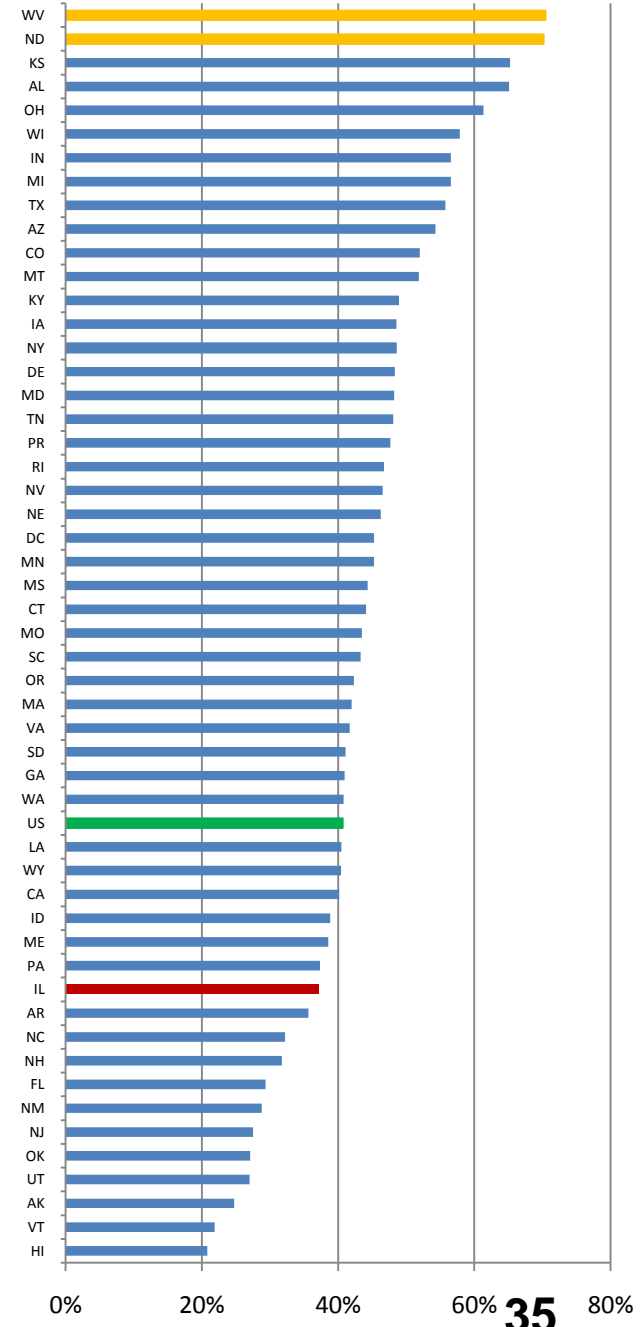
## % Pre and Post-tested



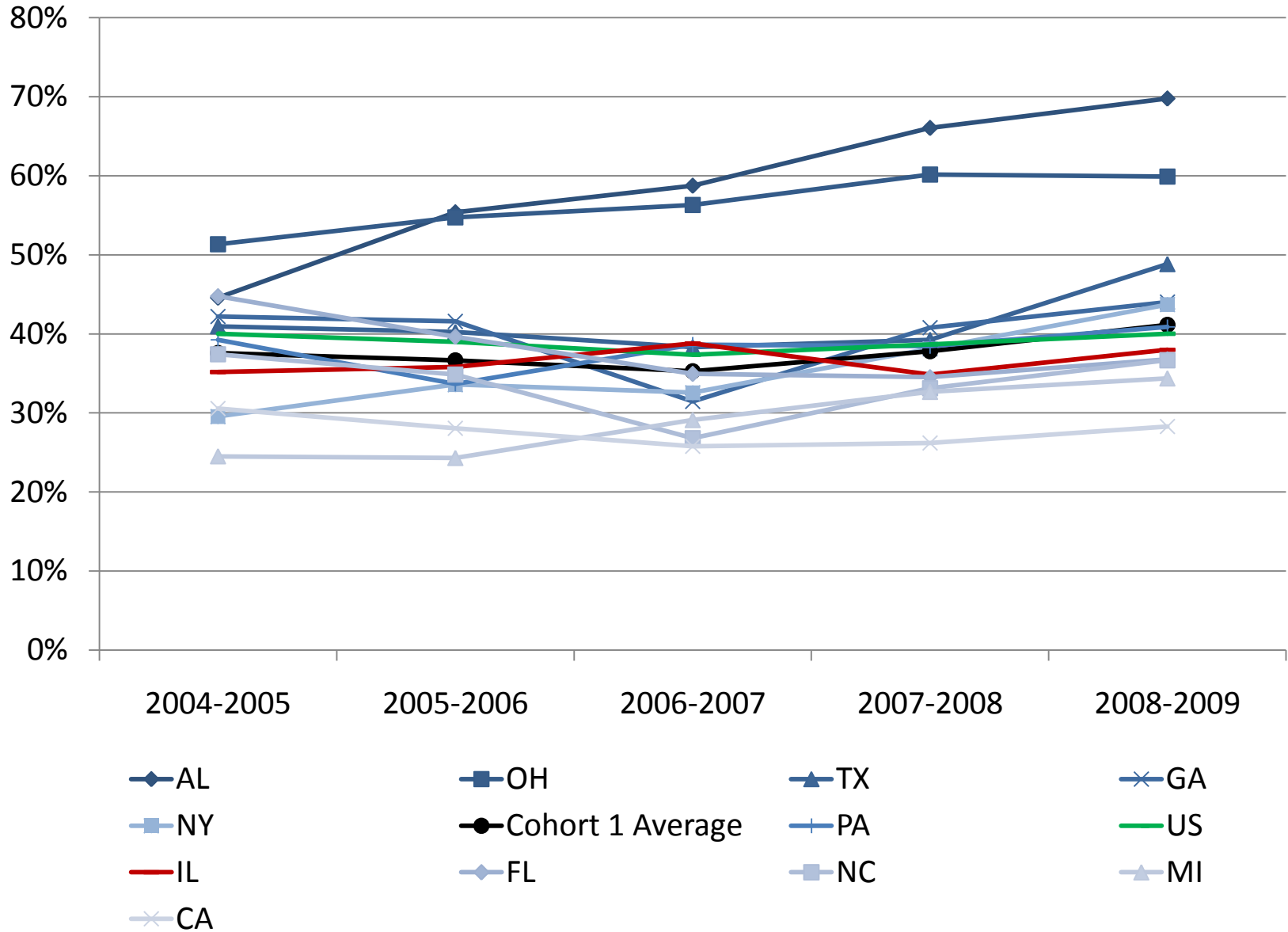
## % of ABE/ASE Completers



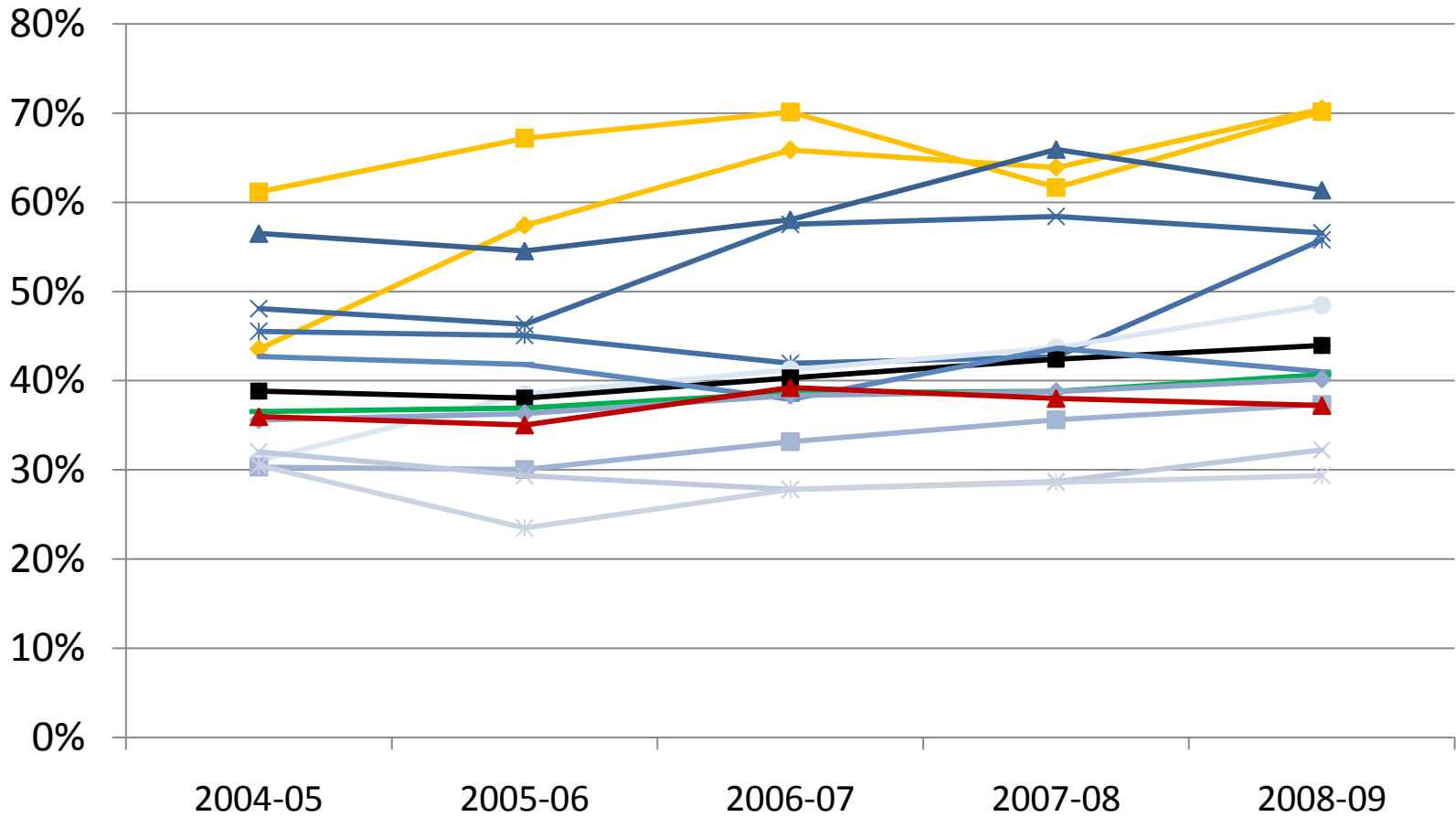
## % of ESL Completers



# Trend in Percent of ABE/ASE Student Completers, PY 2004-05 to PY 2008-09



# Trend in Percent of ESL Student Completers, PY 2004-05 to PY 2008-09



## Where do we go from here...

- ➔ **At this meeting we will have sessions focusing on the following...**
- ➔ **Analysis of multi-year program data and outcomes with an emphasis on using data to inform program decisions and design**
- ➔ **Implementing Evidence Based Reading Instruction into the classroom**
- ➔ **Infusing curriculum with the skills designed to promote student success in pathways to post-secondary education, employment and careers**
- ➔ **Review of program orientation and assessment policies and practices**

| Session to attend   | # of Programs | Cohort Groups         |
|---------------------|---------------|-----------------------|
| Breakout Session #1 | 13            | A Cohort              |
|                     | 7             | B Cohort              |
|                     | 5             | C Cohort              |
|                     | 25            | <b>Total Programs</b> |
| Breakout Session #2 | 6             | D Cohort              |
|                     | 9             | E Cohort              |
|                     | 7             | F Cohort              |
|                     | 22            | <b>Total Programs</b> |
| Breakout Session #3 | 11            | G Cohort              |
|                     | 9             | H Cohort              |
|                     | 8             | I Cohort              |
|                     | 28            | <b>Total Programs</b> |
| Breakout Session #4 | 8             | J Cohort              |
|                     | 7             | K Cohort              |
|                     | 7             | L Cohort              |
|                     | 22            | <b>Total Programs</b> |

| Region | Cohort         | Program                            |
|--------|----------------|------------------------------------|
| I      | A              | Kennedy King Community College     |
| I      | A              | Malcolm X Community College        |
| I      | A              | Olive-Harvey Community College     |
| I      | A              | Richard J. Daley Community College |
| I      | A              | Truman Community College           |
| I      | A              | Wilbur Wright Community College    |
| II     | A              | College of Dupage                  |
| II     | A              | College of Lake County             |
| II     | A              | Elgin Community College            |
| II     | A              | Oakton Community College           |
| II     | A              | Triton College                     |
| II     | A              | Waubensee Community College        |
| IV     | A              | Southwestern Illinois College      |
|        | <b>A Count</b> | 13                                 |

| Region | Cohort         | Program                              |
|--------|----------------|--------------------------------------|
| II     | B              | Moraine Valley Community College     |
| II     | B              | Morton College                       |
| II     | B              | Rock Valley College                  |
| II     | B              | Township High School District #214   |
| II     | B              | William Rainey Harper College        |
| III    | B              | Black Hawk College                   |
| III    | B              | Joliet Junior College                |
|        | <b>B Count</b> | 7                                    |
| I      | C              | Chinese Mutual Aid Association       |
| I      | C              | Polish American Association          |
| I      | C              | Pui Tak Center                       |
| II     | C              | McHenry County College               |
| III    | C              | Kankakee Community College           |
|        | <b>C Count</b> | 5                                    |
| I      | D              | Albany Park Community Center, Inc.   |
| I      | D              | Safer Foundation/PACE Institute      |
| II     | D              | Rockford Public Schools Dist. #205   |
| II     | D              | South Suburban College               |
| III    | D              | Urbana School District #116          |
| IV     | D              | Illinois Department of Corrections   |
|        | <b>D Count</b> | 6                                    |
| II     | E              | Kishwaukee College                   |
| II     | E              | Prairie State College                |
| II     | E              | Township High School District #211   |
| III    | E              | Heartland Community College          |
| III    | E              | Lincoln Land Community College       |
| III    | E              | Parkland College                     |
| III    | E              | Springfield Public School Dist. #186 |
| IV     | E              | Lake Land College                    |
| IV     | E              | Lewis and Clark Community College    |
|        | <b>E Count</b> | 9                                    |

| Region | Cohort         | Program                                 |
|--------|----------------|---|
| I      | F              | National Latino Education Institute     |
| II     | F              | Mundelein Cons. High School #120        |
| III    | F              | Danville Area Community College         |
| III    | F              | Dewitt-Livingston-McLean ROE            |
| III    | F              | Illinois Central College                |
| III    | F              | Peoria Public Schools #150              |
| IV     | F              | Kaskaskia Community College             |
|        | <b>F Count</b> | <b>7</b>                                |
| I      | G              | Centro Romero                           |
| I      | G              | Howard Area Community Center            |
| I      | G              | Instituto del Progreso Latino           |
| I      | G              | Literacy Chicago                        |
| II     | G              | Township High School District #113      |
| II     | G              | World Relief Education Program - DuPage |
| II     | G              | YWCA Elgin                              |
| III    | G              | Illinois Valley Community College       |
| III    | G              | Richland Community College              |
| IV     | G              | Illinois Eastern Community Colleges     |
| IV     | G              | John A. Logan College                   |
|        | <b>G Count</b> | <b>11</b>                               |
| I      | H              | Asian Human Services                    |
| I      | H              | Erie Neighborhood House                 |
| I      | H              | Heartland Human Care Services           |
| II     | H              | Community High School District #94      |
| II     | H              | Highland Community College              |
| II     | H              | Sauk Valley Community College           |
| III    | H              | Carl Sandburg College                   |
| III    | H              | Spoon River College                     |
| IV     | H              | Carbondale Community High School        |
|        | <b>H Count</b> | <b>9</b>                                |

| Region | Cohort         | Program  |
|--------|----------------|--|
| I      | I              | De La Salle Institute-Tolton Center            |
| I      | I              | Jewish Vocational Service                      |
| I      | I              | Universidad Popular                            |
| I      | I              | World Relief - Chicago                         |
| III    | I              | Macon-Piatt Regional Office of Education       |
| IV     | I              | Rend Lake College                              |
| IV     | I              | ROE #02 (Five County ROE)                      |
| IV     | I              | Shawnee Community College                      |
|        | <b>I Count</b> | <b>8</b>                                       |
| I      | J              | Greater West Town Community Proj               |
| II     | J              | School District U46                            |
| II     | J              | The Literacy Council                           |
| II     | J              | World Relief Education Program - Aurora        |
| III    | J              | Decatur School District #61                    |
| III    | J              | John Wood Community College                    |
| III    | J              | Peoria County ROE #48                          |
| IV     | J              | Southeastern Illinois College                  |
|        | <b>J Count</b> | <b>8</b>                                       |
| I      | K              | Chicago Commons Association                    |
| I      | K              | Jobs for Youth/Chicago, Inc.                   |
| I      | K              | Prologue, Inc.                                 |
| I      | K              | YMCA of Metropolitan Chicago                   |
| IV     | K              | Monroe/Randolph Regional Office of Education   |
| IV     | K              | Pana Community Unit District #8                |
| IV     | K              | Southern Illinois University                   |
|        | <b>K Count</b> | <b>7</b>                                       |
| I      | L              | Sullivan House Child Welfare Agency            |
| II     | L              | Aurora East School District #131               |
| II     | L              | Illinois Migrant Council (Woodstock)           |
| III    | L              | Henderson/Mercer/Warren ROE (PASS)             |
| IV     | L              | Edwardsville Community Unit School District #7 |
| IV     | L              | Macoupin County ROE #40                        |
| IV     | L              | Regional Office of Education #03               |
|        | <b>L Count</b> | <b>7</b>                                       |