

AEL Updates

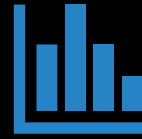
Date: April 5, 2022

Cecilia Elhaddad, Director for Adult Education and Literacy

Kathy Olesen-Tracey, Senior Director for Adult Education and Literacy

Welcome from Dr. Brian Durham

Agenda



AEFLA Performance Metrics



Updates to AEL Policy and Processes



Important Dates

AEFLA Performance Metrics

Where do the metrics come from?

Every two years, the ICCB and OCTAE Negotiate Performance Metrics. Targets for FY23 and FY24 have not yet been determined.



Today's goal is to

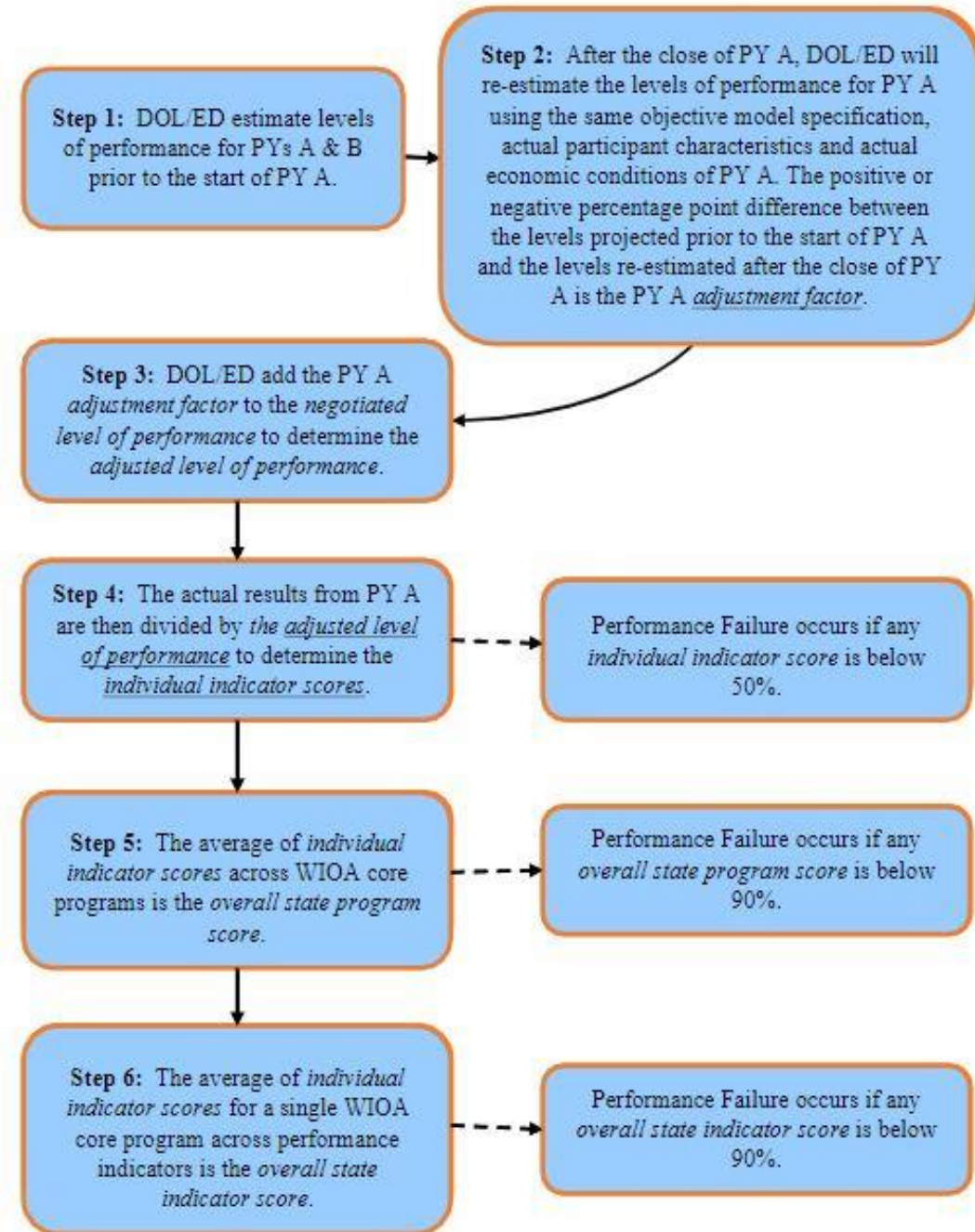
Provide an overview of the Negotiation process

Connect the negotiations process to improving data quality, and

Provide an overview of how the ICCB will support programs

The Negotiation Process

WIOA establishes performance accountability indicators and performance requirements to assess the effectiveness of states and local areas in achieving positive outcomes for individuals served by the workforce development system's core programs.



Statistical Adjustment Model

- Statistical Adjustment Model: "The statistical adjustment model will take into consideration the *economic conditions* in the state, *characteristics of program participants*, and other factors that may affect performance as required in Section 116 of WIOA." -- from *NRS SAM Resource*
- Participant characteristics include *barriers to employment*
- Affects our Adjusted Level of Performance

Quartile Ranking

This shows us how IL compares to other states overall and plays a role in our negotiations process

- Let's look at the Negotiation Checker, the document sent by OCTAE to begin the process.
- We rank higher in ESL MSGs than ABE/ASE MSGs

Data used in Negotiations

- NRS Reports
- Other performance measures come from data matching
- National Averages

How our data aligns...

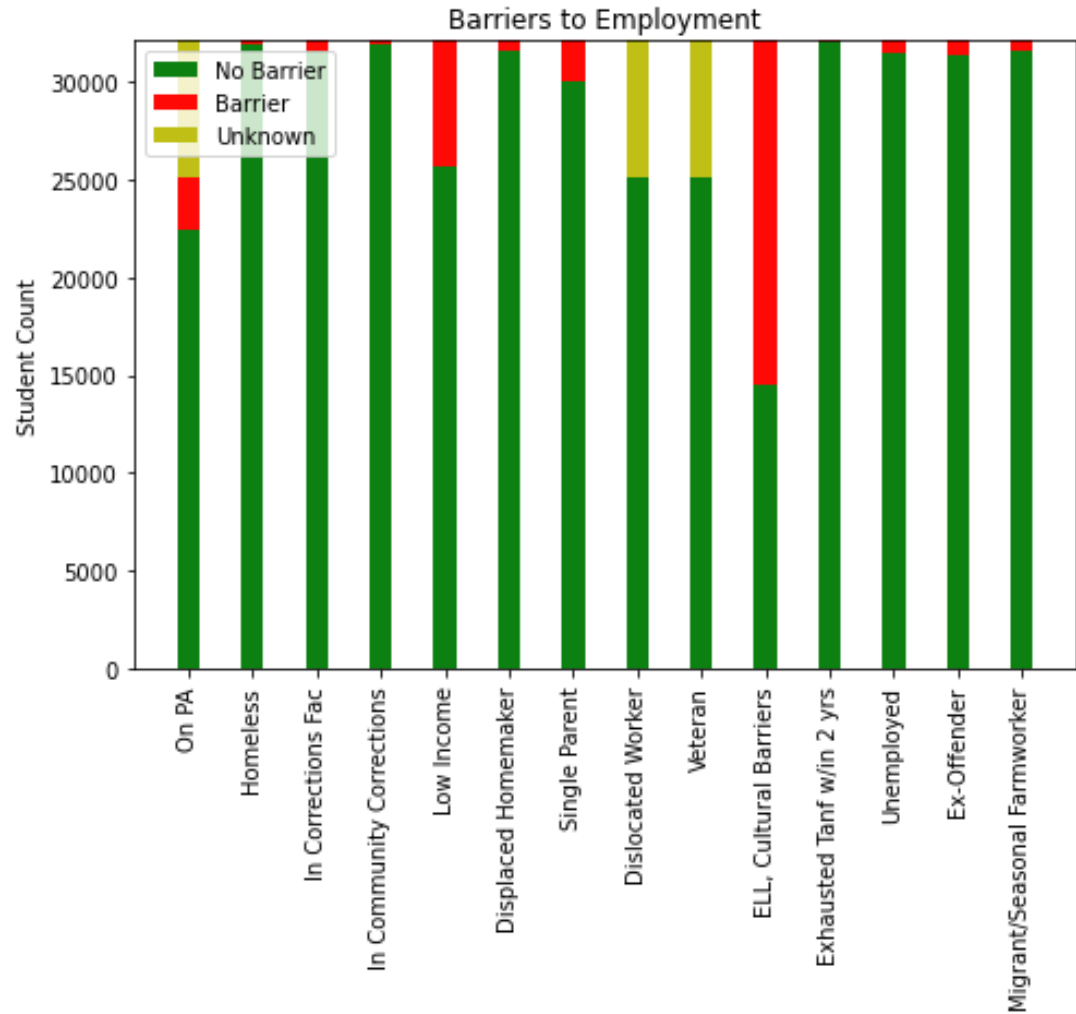
"All students complete, date, and sign an intake form each fiscal year..." -- *MIS User DQC, Data Collection and Verification, Item 2*

"The AE Provider manually inputs or uploads information from the Student Intake Form for all students enrolled in one or more AE course." -- *MIS User DQC, Data Collection and Verification, Item 3*

"The AE Provider gives students multiple opportunities to provide and verify personal information (e.g. during intake and orientation, when enrolling in new classes) to ensure data are complete, correct, and up to date."-- *MIS User DQC, Data Collection and Verification, Item 14*

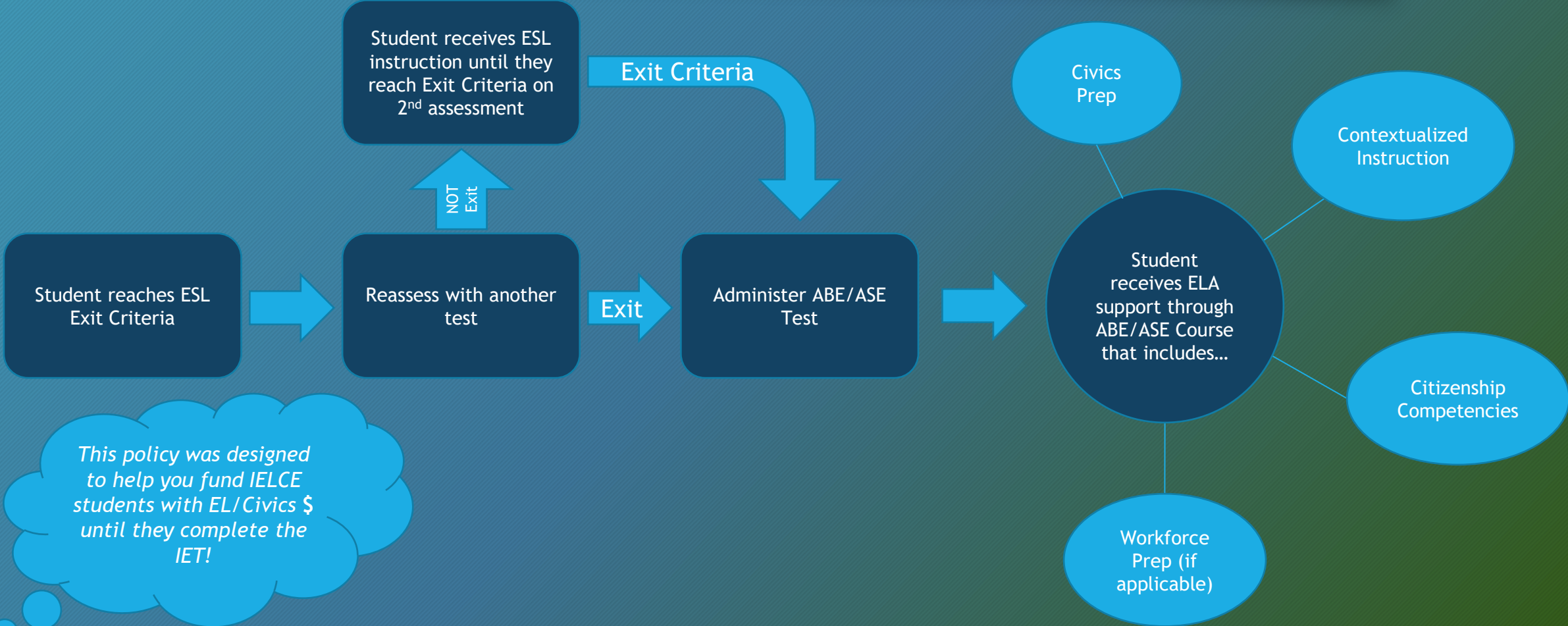
Current Data on Barriers to Employment

Do you think these statistics represent our students?



Updates to AEL Policy and Processes

Testing out of ESL in IELCE Programs



Testing out of ESL for non-IELCE Students

If a non-IELCE student reaches ESL Exit Criteria...

- they may not continue to receive ESL instruction
- may not be enrolled in ESL classes.

Students may be concurrently enrolled in ESL and ABE instruction as long as they:

- receive an NRS-approved test in both instructional categories,
- have not reached ESL Exit Criteria,
- and are enrolled in classes that align with the Education Functioning Level determined by those tests.

Progress Measurement Rate

Post-Test Rate: # *students who...*

Were post-tested

Were pre-tested

Progress Measurement Rate

Progress Measurement Rate: # *students who...*

Earned MSG

Were pre-tested

OR

Were post-tested + earned HSE + completed credit course + earned IRC* + completed WPL Program**

Were pre-tested

*IRC = Industry-Recognized Credential

**WPL Program = Workplace Literacy Program (e.g., Bridge, ICAPS/IET, ESLTP, etc.)

HSE Reports and Consent

Starting tomorrow (04/06/22):

- New field on Student Bio/Demo page
- Consent only required once over lifetime of a student
- Until consent has been indicated on Bio/Demo page:
 - Student's HSE scores will not appear on Test Info pages
 - Students will not appear on HSE Reports

Important Note: Regardless of consent status, HSE attainments will be counted on state reports *and* attributed to your program for performance funding and evaluation purposes

Education / Employment

* School Type?
 US Based Schooling
 Non-US Based Schooling

Month/Year when last enrolled?
May 2008

* Number of School Years Completed
HS Diploma or Alternative C

Last School Attended

* US HSE upon entry to program?
 Yes
 No

* US diploma upon entry to program?
 Yes
 No

Consent granted to obtain HSE test results?
 Yes
 No
 Not provided

Occupation

HSE Reports and Consent

OPTIONS:

1. Begin collecting HSE Consent for all students enrolled from this point forward.
2. Backfill HSE Consent information manually for all existing students.
3. Backfill HSE Consent information for all students via Excel using the *DATA MATCH* button on the Students: List/Search page, and upload to CAIT site (*details coming soon*)

Students: List/Search

Search Add New

List Current FY

Global Filter

DATA MATCH EXCEL

Fiscal Year	SSN	Last Name	FirstName	MI	DOB	Status	Test Info	Class Info	Goals	Notes	Custom Fields	IEL/CE	Delete
2021	xxx-xx-	Adams	Marsha		01/01/1980	S							Delete
2021	xxx-xx-	Bratton	James		02/14/1970	S							Delete

Changes to Flow of State Basic and State Performance Funds

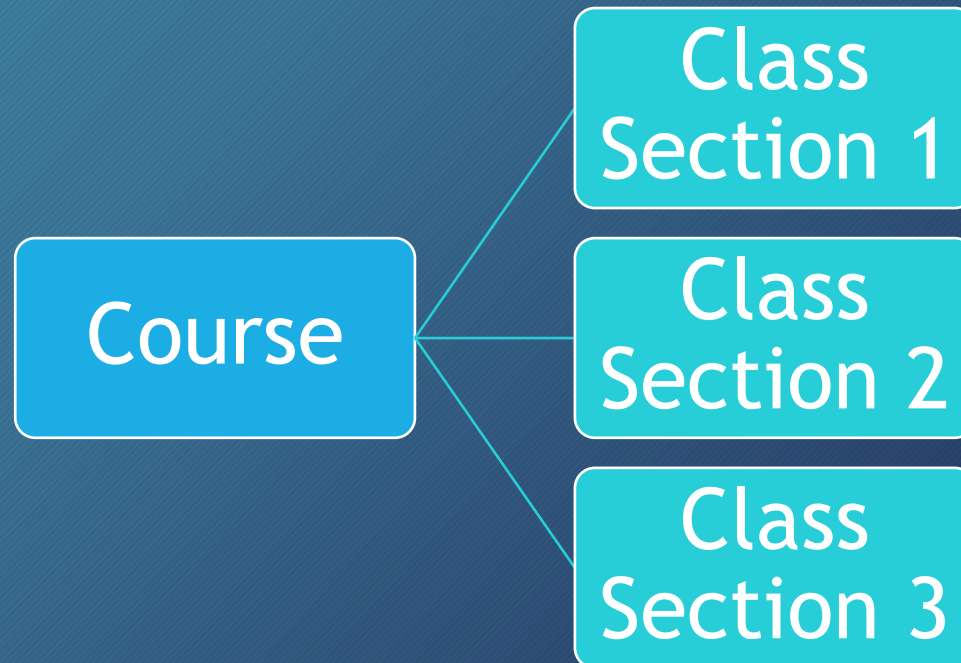
- State Basic will be vouchered quarterly (July, August, September / October, November, December / January, February, March / April, May, and June.
- Performance funding will be released in its entirety once grant agreements are in place.
- Federal funding processes will remain the same.
- NOTE: For FY23 Renewal, the Admin dollars will be either your NICR or the De Minimis Rate. A webinar will be held once the Grant Renewal is posted.

Collaborative AEL Programming Policy

- Will allow AE Providers to share students
- Designed to maximize efficiency of AEL funds
- Final policy to come before FY23

Course Approvals

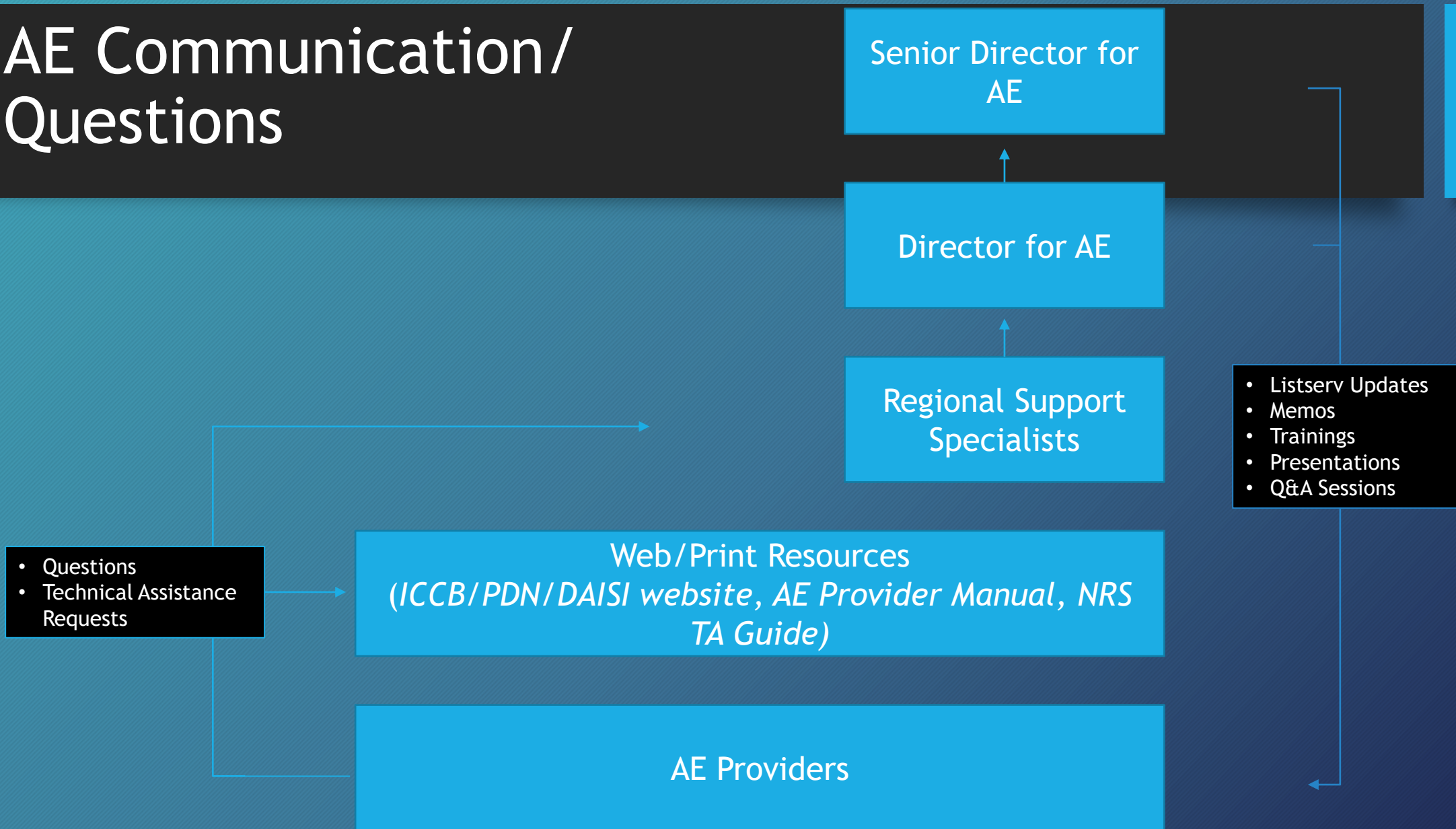
- *Remember:* course \neq class
- Changes to Course Approval Process:
 - No addendums
 - Fewer course submissions



Tracking HSE Credentials Earned via Transcript-Based Alt Methods of Credentialing

- Tracked in IL HSE Database
- Transferred to DAISI for data matching

AE Communication/ Questions



- Questions
- Technical Assistance Requests

Web/Print Resources
(*ICCB/PDN/DAISI website, AE Provider Manual, NRS TA Guide*)

AE Providers

Senior Director for
AE

Director for AE

Regional Support
Specialists

- Listserv Updates
- Memos
- Trainings
- Presentations
- Q&A Sessions

Important Dates

Reports, DAISI, and Requests for Federal Draw Down

Reports and Daisi

- Please refer to the Provider Manual for Due Dates
 - 3rd Quarter Reports are due April 30
 - 4th Quarter and EOY reports will be due by August 15
 - Details will be sent out via email
- DAISI Data will be frozen August 15, 2022

Budget Modifications and Federal Draw Down

- Budget Modifications are due May 31st
- All Federal Funding requests are due on August 1, 2022

Thank you!

